



# HEAL Initiative

*Housing-Focused Encampment Assistance Link*

## Phase 2 Planning: Encampment Prioritization Criteria

Dianna Grey  
Homeless Strategy Officer  
October 6, 2021

# Housing-Focused Encampment Assistance Link (HEAL) Initiative

## Phase 2 Planning



### Briefing Topics

- ☐ Draft Prioritization Criteria & Encampment Selection
- ☐ Next Steps HEAL Phase 2 Planning/Preparation
- ☐ Future Refinement/Process Improvement



# Background

## Housing-Focused Encampment Assistance Link (HEAL) Initiative

**Resolution 2021-204-049, adopted February 4<sup>th</sup>, 2021:** “To immediately house individuals, create a path to permanent housing and over time, eliminate the necessity for unsheltered camping in our city.”

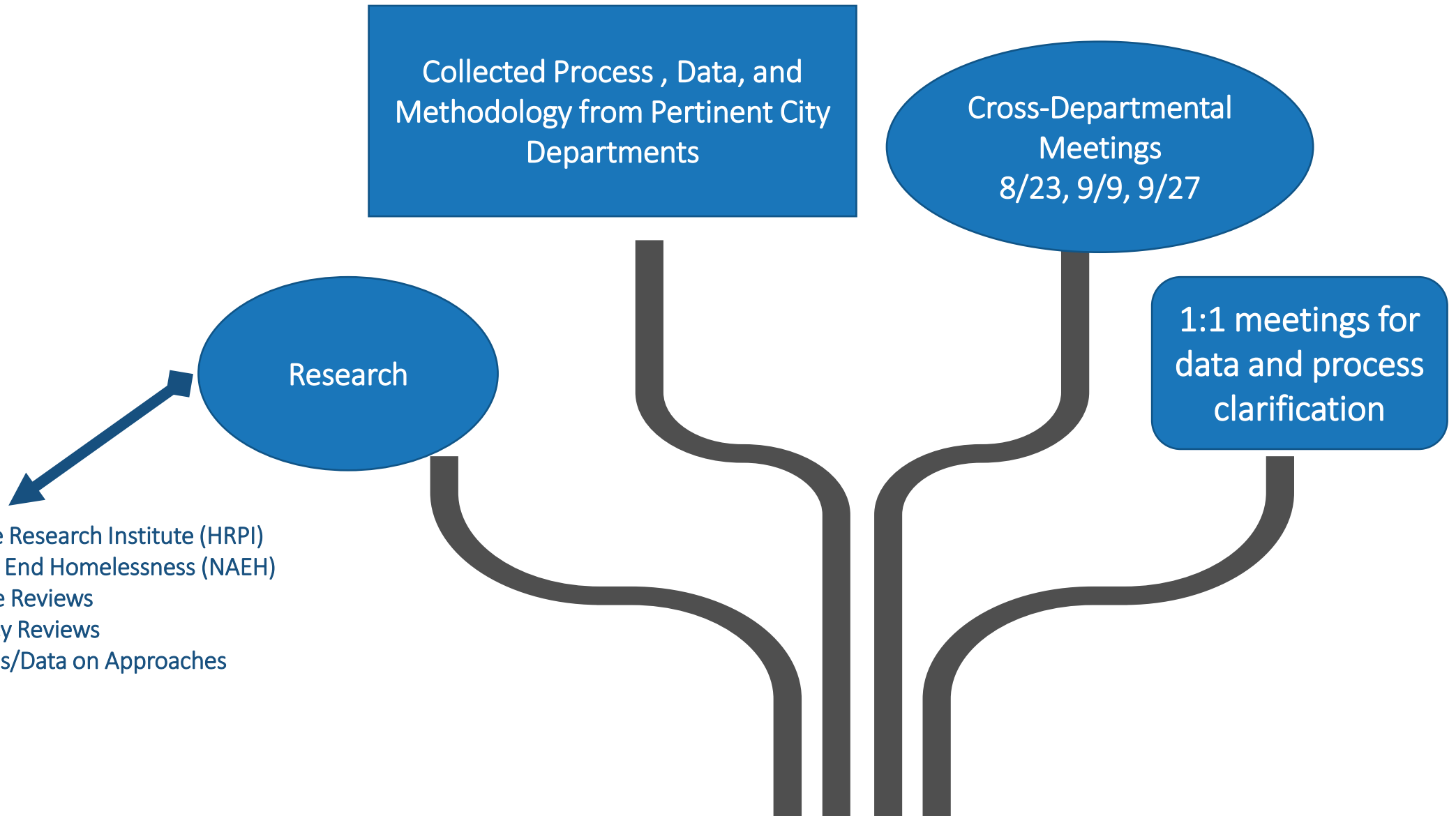
- Phase I: Four encampments with specific health and safety hazards
- Six-month timeline to plan, contract, and execute (extended by one month due to Winter Storm Uri)
- Staff directed to develop recommendations for future phases, including prioritization of sites
- Directed City Manager to identify \$3M for needed services

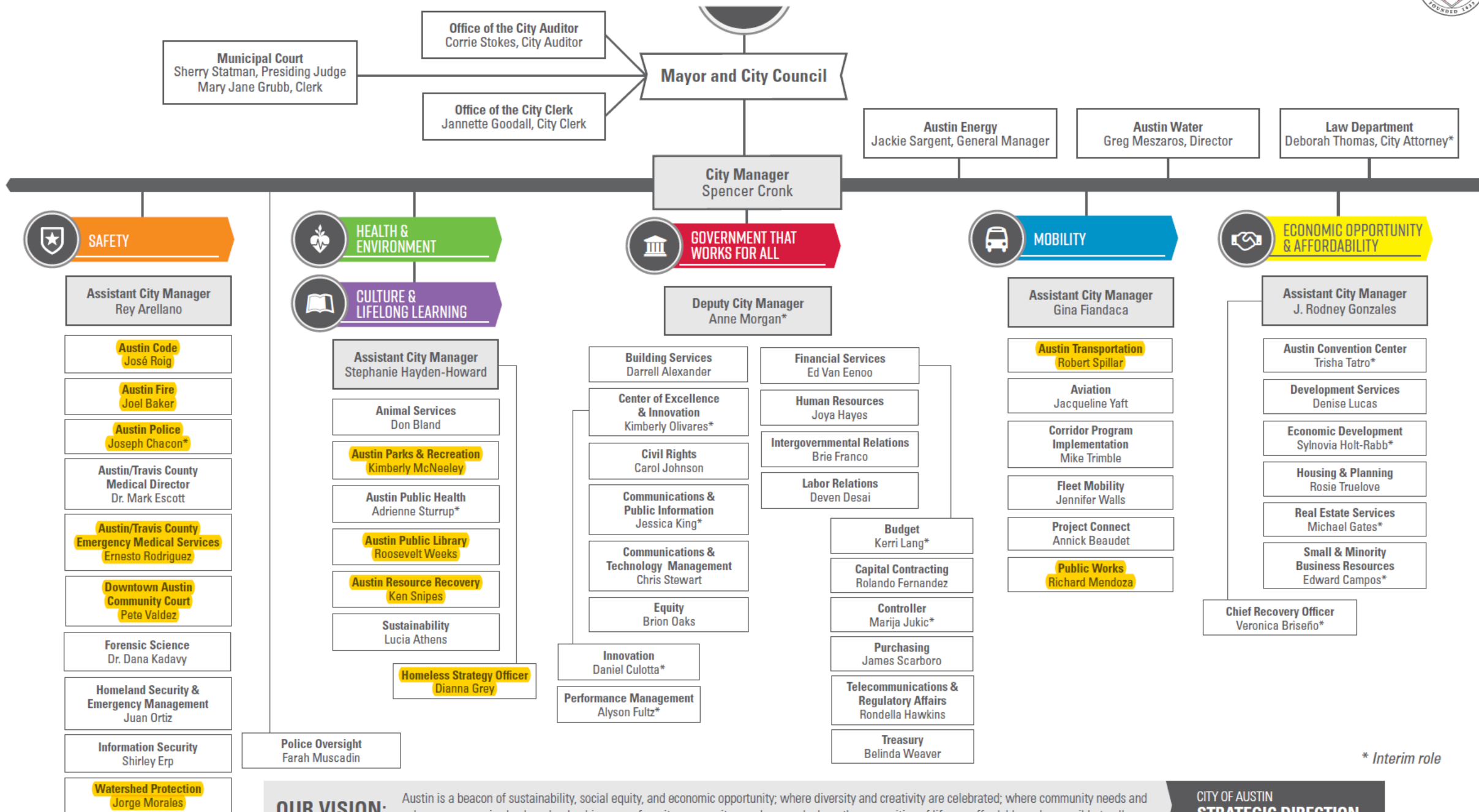
### HEAL Phase I (April – September 2021)

- ~ 150 individuals relocated from Terrazas Library (D3), Ben White/Menchaca (D5), Congress Avenue/Cesar Chavez (D9), 183/Oak Knoll (D8)
- Opened two new City of Austin bridge shelters: Southbridge (all HEAL), Northbridge (partial HEAL)
- Service Providers: Family Eldercare (RRH), Integral Care (RRH, HOST, shelter), Front Steps



# Encampment Prioritization Criteria Development





\* Interim role

# Observations



1. Data collected on various, often, departmental “unique” platforms
2. Most data collected visible only to that individual system / department
3. Several departments utilize GIS to tag locations
4. Several departments utilize a rating system
5. 311-driven prioritization may present equity issues



# Encampment Information Sources



Department	Primary Referral Sources			Data & Assessment Tools			Information Type		Notes
	311	911	Field Staff	Written Tool	Rating System	GIS Data	Individual	Site	
Austin Fire Department	✓	✓				✓			Fire and Safety Risks
Austin Police Department	✓	✓				✓	✓		Focus on reported criminal activity and enforcement of
Parks and Recreation Department	✓		✓	✓	✓	✓	✓	✓	Capacity to make referral to HOST via system
Austin Transportation Department	✓			✓		✓		✓	Data on pedestrian/vehicular accidents from Vision Zero
Austin Resource Recovery	✓			✓		✓		✓	Assessment from requests for services
Public Works	✓		✓	✓				✓	Information from both regular clean-ups and requested services
HOST	✓		✓	✓			✓		Referral portal, individual level data
Watershed Protection Department			✓	✓	✓	✓		✓	Flood Risk

# DRAFT

## HEAL Prioritization Tool Categories



### Basic Information

- ☐ *Location Address*
- ☐ *Geo tag*
- ☐ *Photos*
- ☐ *Date Assessed*
- ☐ *Department/Staff*

### General Conditions

- ☐ *Estimated # of Persons*
- ☐ *Estimated # of Tents*
- ☐ *Occupied Vehicle(s)*
- ☐ *Built Structures*
- ☐ *Proximity to other uses*
- ☐ *Abandoned Vehicle(s)*

## Public Health

- ☐ High-Risk Health Conditions
- ☐ Minors Present
- ☐ Pregnant Persons Present
- ☐ Access to Potable Water
- ☐ Access to Hygiene Resources
- ☐ Unsafe Syringe Disposal
- ☐ Evidence of Rodents
- ☐ Evidence Human Waste
- ☐ Accumulated Trash
- ☐ Dumping
- ☐ Risk of Victimization
- ☐ EMS Access
- ☐ ARR Access

## Public Safety

- ☐ Flood Risk Level
- ☐ Wildfire Risk Level
- ☐ Combustible Materials Present
- ☐ Observed Fire Activity
- ☐ Risk to Public Infrastructure
- ☐ Pedestrian Pathway Risk
- ☐ Vehicle Pathway Risk
- ☐ Traffic Visibility Risk
- ☐ First Responder Access

### Risk Ratings:

1- Not Observed, 2-Minor Risk Factors, 3-Modest Risk Factors, 4- Significant Risk Factors, 5-Imminent Danger

# HEAL Phase II Encampment Prioritization: Next Steps



## Immediate Next Steps

- Assign preliminary point scoring
- Create basic mobile tool 1.0
- 'Beta-test' in 6-10 high-need encampments, as identified by cross-departmental group
- Based on user feedback prioritization, refine tool & scoring, identify Phase 2 encampments

A screenshot of a web browser displaying a survey form titled "responsePage.aspx?id=9hleXKumRUux0L5GCKmmfyxZvDZu9ilLnajd1uu...". The form contains several sections with radio button options and a table for rating concerns.

23. Rodents or Droppings?

☐ Yes  
☐ No

24. 10(a) Endangered Species Land Tract

☐ Yes  
☐ No

25. Rate General Concerns

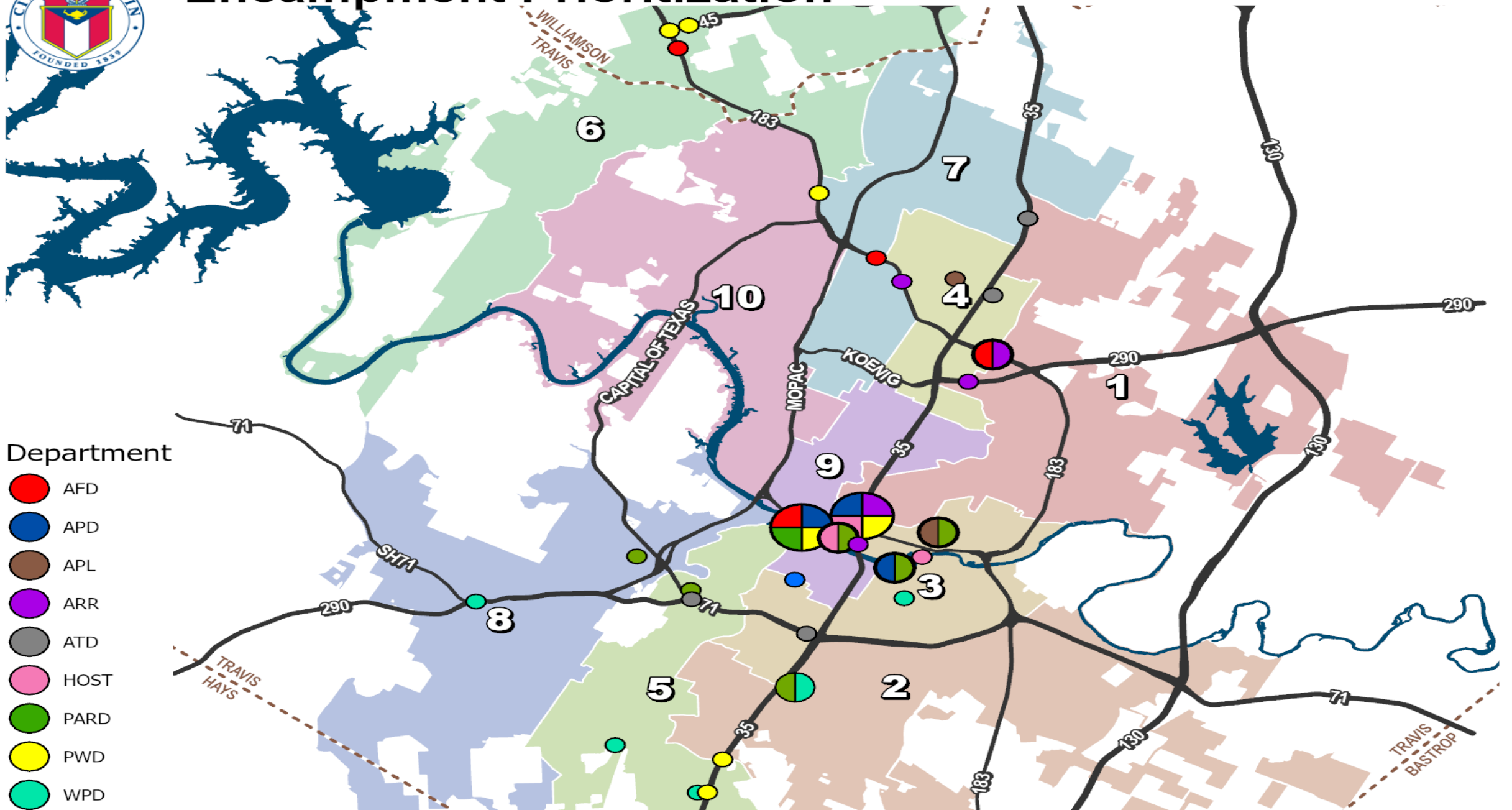
	Not Observed	Low	Moderate	High	Immediate Concern
Crime	<input type="radio"/>	<input type="radio"/>	<input type="radio"/>	<input type="radio"/>	<input type="radio"/>
Traffic Safety	<input type="radio"/>	<input type="radio"/>	<input type="radio"/>	<input type="radio"/>	<input type="radio"/>
Water Quality	<input type="radio"/>	<input type="radio"/>	<input type="radio"/>	<input type="radio"/>	<input type="radio"/>
Wildfire	<input type="radio"/>	<input type="radio"/>	<input type="radio"/>	<input type="radio"/>	<input type="radio"/>
Trash and Debris	<input type="radio"/>	<input type="radio"/>	<input type="radio"/>	<input type="radio"/>	<input type="radio"/>
Proximity Schools and Daycares	<input type="radio"/>	<input type="radio"/>	<input type="radio"/>	<input type="radio"/>	<input type="radio"/>
Proximity Residences	<input type="radio"/>	<input type="radio"/>	<input type="radio"/>	<input type="radio"/>	<input type="radio"/>
Proximity Business	<input type="radio"/>	<input type="radio"/>	<input type="radio"/>	<input type="radio"/>	<input type="radio"/>
Flood Risk	<input type="radio"/>	<input type="radio"/>	<input type="radio"/>	<input type="radio"/>	<input type="radio"/>
Damaged Trees, Plants, Landscaping	<input type="radio"/>	<input type="radio"/>	<input type="radio"/>	<input type="radio"/>	<input type="radio"/>
Occupant Behavior	<input type="radio"/>	<input type="radio"/>	<input type="radio"/>	<input type="radio"/>	<input type="radio"/>
Occupant Physical Condition / Health	<input type="radio"/>	<input type="radio"/>	<input type="radio"/>	<input type="radio"/>	<input type="radio"/>

26. Photos Series 1 (upload up to 10) (Non-anonymous question)

Upload file



# Encampment Prioritization



# HEAL Phase II Encampment Prioritization: Next Steps



ResponsePage.aspx?id=9hleXKumRUux0L5GCKmmfyzVzDZu9iILnajd1uu...

23. Rodents or Droppings?

☐ Yes

☐ No

24. 10(a) Endangered Species Land Tract

☐ Yes

☐ No

25. Rate General Concerns

	Not Observed	Low	Moderate	High	Immediate Concern
Crime	<input type="radio"/>	<input type="radio"/>	<input type="radio"/>	<input type="radio"/>	<input type="radio"/>
Traffic Safety	<input type="radio"/>	<input type="radio"/>	<input type="radio"/>	<input type="radio"/>	<input type="radio"/>
Water Quality	<input type="radio"/>	<input type="radio"/>	<input type="radio"/>	<input type="radio"/>	<input type="radio"/>
Wildfire	<input type="radio"/>	<input type="radio"/>	<input type="radio"/>	<input type="radio"/>	<input type="radio"/>
Trash and Debris	<input type="radio"/>	<input type="radio"/>	<input type="radio"/>	<input type="radio"/>	<input type="radio"/>
Proximity Schools and Daycares	<input type="radio"/>	<input type="radio"/>	<input type="radio"/>	<input type="radio"/>	<input type="radio"/>
Proximity Residences	<input type="radio"/>	<input type="radio"/>	<input type="radio"/>	<input type="radio"/>	<input type="radio"/>
Proximity Business	<input type="radio"/>	<input type="radio"/>	<input type="radio"/>	<input type="radio"/>	<input type="radio"/>
Flood Risk	<input type="radio"/>	<input type="radio"/>	<input type="radio"/>	<input type="radio"/>	<input type="radio"/>
Damaged Trees, Plants, Landscaping	<input type="radio"/>	<input type="radio"/>	<input type="radio"/>	<input type="radio"/>	<input type="radio"/>
Occupant Behavior	<input type="radio"/>	<input type="radio"/>	<input type="radio"/>	<input type="radio"/>	<input type="radio"/>
Occupant Physical Condition / Health	<input type="radio"/>	<input type="radio"/>	<input type="radio"/>	<input type="radio"/>	<input type="radio"/>

26. Photos Series 1 (upload up to 10) (Non-anonymous question)

Upload file

## Future Development/Improvement

- Operationalize regular updates
- Regular assessment of utility and efficacy
- Revisions based on user feedback, demographics, geographic distribution.
- GIS functionality
- Integration into various departmental tools

# Other HEAL Planning & Preparation

## October/November 2021

- Expand existing Rapid Rehousing contract(s) by ~ \$1.5M to accommodate both current and future HEAL clients
- Hire HSD Program Manager & other positions

## By Year-End

- Release solicitation for additional housing services
- Assess adequacy of bridge shelter capacity
- Continued development of reporting and process improvement

# Discussion:

