

BEVERLY S. SHEFFIELD NORTHWEST DISTRICT PARK VISION PLAN

PARKS AND RECREATION BOARD MEETING

Charles Mabry, Associate Project Manager, PARD

Drew Carman, PLA, Director of Park Planning & Design, RVI

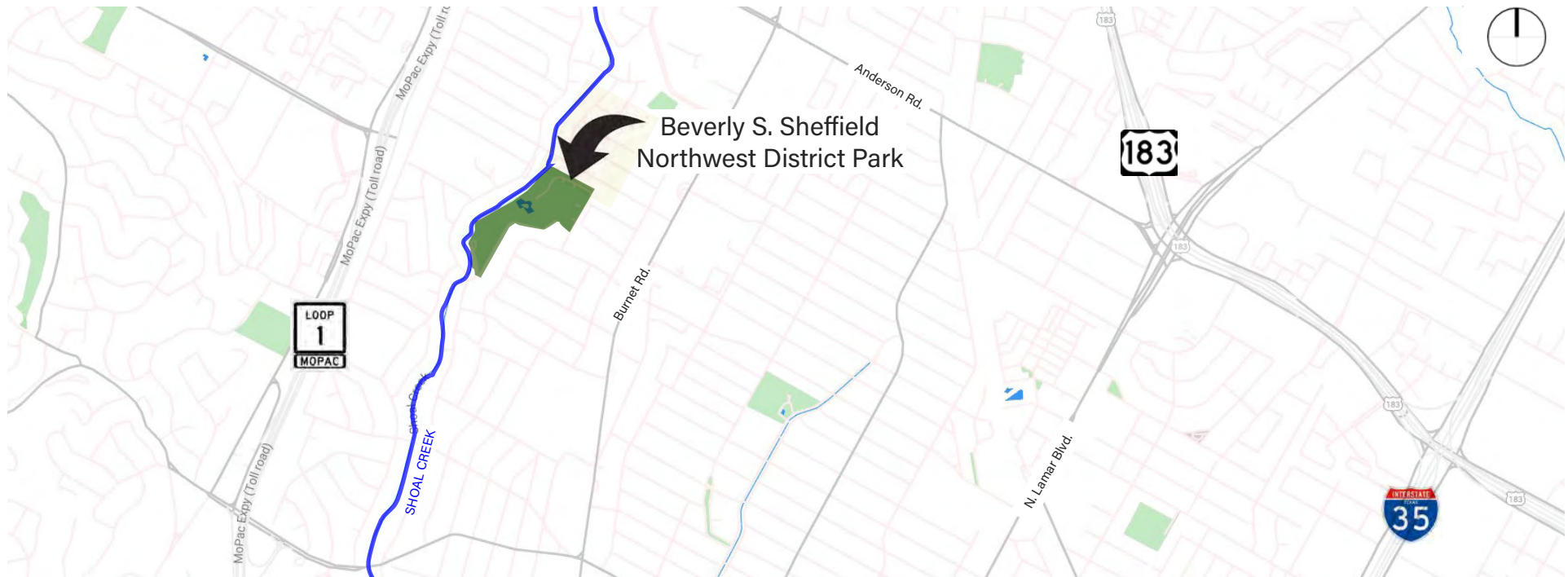
January 25th, 2022



CONTEXT

31-acre park in the Allandale neighborhood. The park was acquired by the City of Austin in 1955, and was last planned in 1987. Located at 7000 Ardath Street, the park is named after former director of the Parks and Recreation Department, Beverly S. Sheffield. Park amenities include baseball fields, basketball and tennis courts, a pool, rentable picnic spaces, a pond, and trails along Shoal Creek.

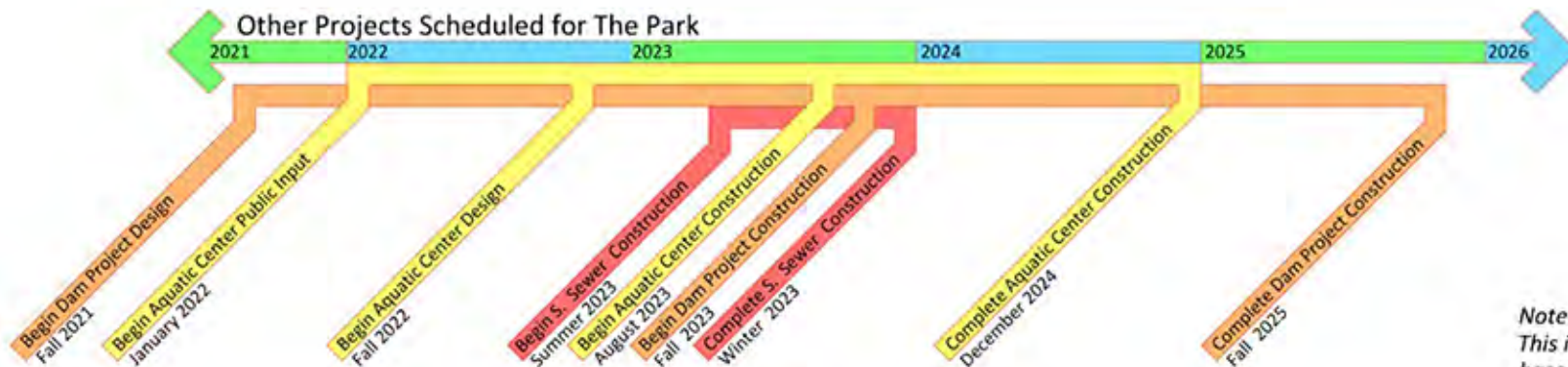
In 1986, in response to the devastating 1981 Memorial Day flood, Northwest Park was established as a detention facility to help with flood control efforts and much of the park was excavated so that it now stands several feet below its original height.



SCHEDULE



OTHER PROJECTS



*Note:
This is an estimated timeline
based on current scheduling
and is subject to change.*

PUBLIC ENGAGEMENT AND STAKEHOLDER INPUT

VIRTUAL MEETINGS

-3 SMALL GROUP MEETINGS: ENVIRONMENTAL GROUP, SPORTS GROUP AND A NEIGHBORHOOD GROUP

-3 COMMUNITY MEETINGS:

#1 - *WHAT WE'VE HEARD*. (APPROX. 45 PARTICIPANTS)

#2 - *VISION PLAN CONCEPTS*. (APPROX. 25 PARTICIPANTS)

#3 - *DRAFT VISION PLAN*. (APPROX 42 PARTICIPANTS)

-2 TECHNICAL ADVISORY GROUP (TAG) MEETINGS - 20+ CITY OF AUSTIN ADVISORY GROUP MEMBERS

-NUMEROUS EMAIL COMMENTS

IN-PERSON MEETINGS

-3 SMALL GROUP MEETINGS: NEIGHBORS & NEIGHBORHOOD ASSOCIATION GROUP

-3 POP-UP MEETING IN THE PARK

SURVEYS

-4 COMMUNITY SURVEYS

-SURVEY # 1 = 423 RESPONDENTS

-SURVEY # 2 = 111 RESPONDENTS

-SURVEY # 3 = 97 RESPONDENTS

-SURVEY # 4 = 80 RESPONDENTS

-OPEN LINK FOR COMMENTS

& MEMORIES @SPEAK UP AUSTIN

Screenshot from zoom community meeting

Community Meeting #1: Beverly S. Sheffield Northwest Park Vision Plan - Shared screen with speaker view

Download (3 files)

Community Meeting #1
PollEv.com/AustinParks512

Chat Messages

park users for many years, especially: Pond, Pool, Playground, Connectivity.

Elle, Alice & Jack Smith 01:46:36
an any chance we can have a playscape like Ramsey Park? Would love more info on where the playground planning is happening.

George Thompson 01:46:41
We need to get the wood planks for the shoal creek bridge walkway? They forgot them in 1986

COA Annabell Uliary - Watershed 01:46:45
annabell.uliary@austintexas.gov

Paulette Kern 01:47:34
I think we need to remember the numbers of people using this park which will be added to the neighborhood with all the construction and new apts. being built.

Carter Watkins 01:47:44
How does the physical playscape and playscape design process get funded? Who designs the playscape?

Martha Stockton 01:48:50
I work for Kompan, which provided the Ramsey Park equipment: kompan.us. they also sell outdoor fitness equipment and sport court enclosures. So happy to hear that Alice and Elle enjoy it! It is pretty cool!

Natalie Sanchez 01:49:08

VISION & VALUES

The following planning values were created, refined, and finalized **through input received during community meetings, small group discussions and survey responses**. These **values were the guideposts that directed the design team**.

ENHANCE AND PRESERVE PARK NATURAL AMENITIES

- Preserve and enhance shade within the park
- Improve and maintain the duck pond
- Add more native habitat areas (trees and grasses/wildflowers)
- Remove impervious cover

ENHANCE AND INCREASE RECREATIONAL AMENITIES (ACTIVE & PASSIVE)

- Support walkers and bikers with adequate trail networks
- Add seating for passive recreational opportunities
- Incorporate more open-ended active uses of the park
- Support existing active recreation uses (baseball, tennis, pickleball, pool)
- Provide dedicated spaces for gatherings, pedestrians, cyclists, and dogs
- Develop underutilized areas of park
- Improve lighting
- Improve playground and restroom facilities

INCREASE PARK CONNECTIVITY AND PARK IDENTITY

- Better connect the park to the neighborhood and nearby recreational amenities
- Enhance signage and wayfinding
- Create opportunities to learn about the park and its history
- Update existing footbridge to park

BALANCE PARK AMENITIES WITH OTHER CITY INFRASTRUCTURE NEEDS

- Coordinate dam rehabilitation requirements with community needs
- Provide space within the Vision Plan for pool modernization
- Plan for sewer line replacement project



Historic turtle, image courtesy of Kari Harvey

VISION PLAN

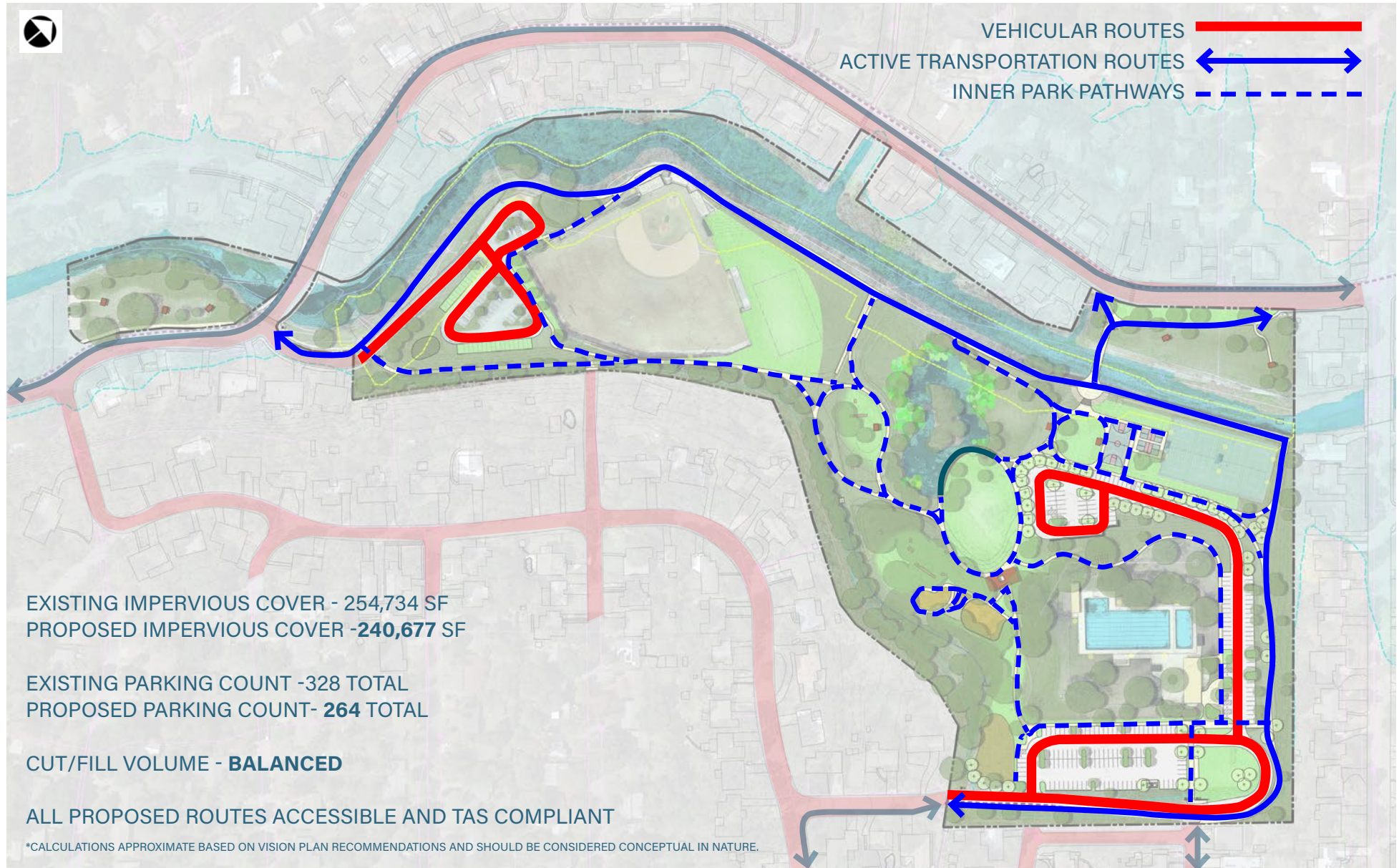


LEGEND

1. ENTRY MONUMENT
 2. EXPANDED BRIDGE LANDING
 3. CENTRAL LAWN
 4. REALIGNED PARK ROAD
 5. NATIVE GRASS + WILDFLOWER PLANTINGS
 6. RESTROOM
 7. PLAYSCAPES, 2-5 YR, 5-12 YR
 8. BASKETBALL COURT
 9. PICKLEBALL COURTS
 10. TENNIS COURTS
 11. BOARDWALK
 12. STAIRWAY W/ LIMESTONE BLOCK RETAINING
 13. PICNIC SHADE STRUCTURE
 14. BICYCLE PARKING
 15. ACCESSIBLE ROUTE FROM DAM
 16. PEDESTRIAN BRIDGE, EXPANDED WIDTH
 17. YOUTH BIKE PLAYGROUND
 18. LIMESTONE BLOCK RETAINING WALL
 19. GRASSPAVE OR EQUAL
 20. REMOVE MSE WALLS
 21. DUMPSTER ENCLOSURE
- DEDICATED BIKE LANE ————
- DAM TOE NO NEW TREES ZONE ————



CIRCULATION



CIRCULATION HIERARCHY

ACTIVE TRANSPORTATION ROUTE



INNER PARK PATHWAYS



LOW PROFILE BOARDWALK



BIKE LANE



STAIRWAY AND BRIDGE LANDING



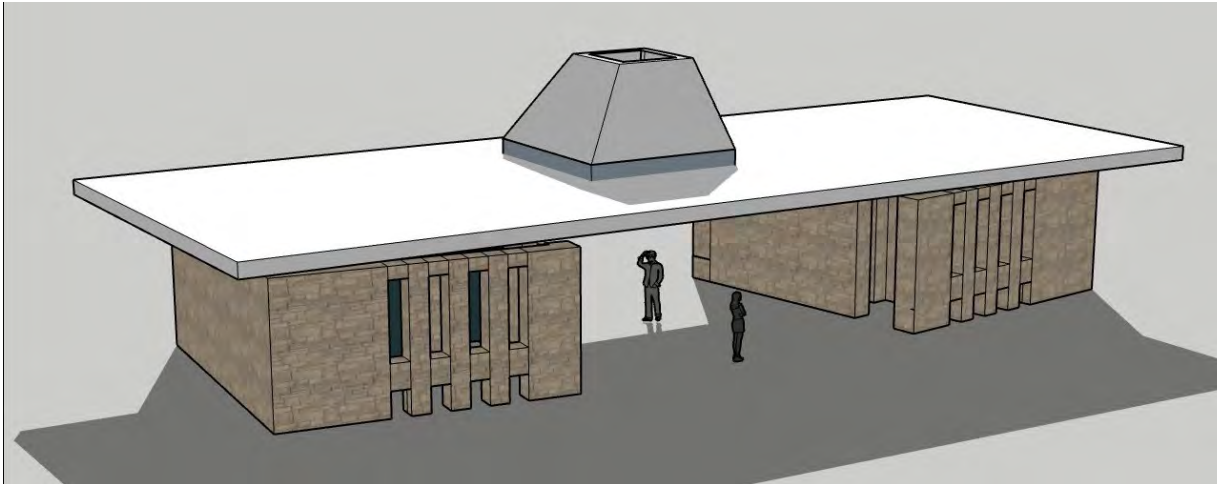
MULTIUSE OPEN GREENS



ACTIVE RECREATION - NATURAL PLAYSCAPES, KIDS BIKE PLAYGROUND, PICKLEBALL



ARCHITECTURAL CHARACTER



DOGTROT RESTROOM

- Architectural references to the mid-century pool building: limestone, concrete, entrance gateway, elevated roof.
- Sited to create a visual frame to view the axis of the central green to the pond.

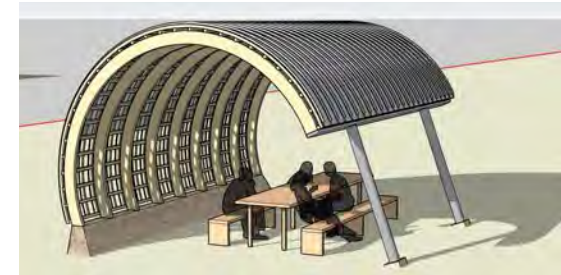
ENTRY MONUMENTS & FURNISHINGS

- Continuation of material palette and form throughout; limestone & concrete, simple but bold form.



PICNIC SHADE SHELTERS - 2 OPTIONS

- Limestone toe walls with same pattern as restroom.
- Option 1, curved glulam beams roof to create the architecture over head. Option 2, four post structure with winged roof.



LANDSCAPE AND HABITAT CHARACTER

POND (SHORT TERM SOLUTIONS)

- Aeration. Recommended 3 aerators in each main pool of pond.
- Edge vegetation management and enhancement.
 - Native vegetation filter for run-off from impervious surface (parking, etc)
- Regular pond maintenance.

POND (LONG TERM SOLUTIONS)

- Further comprehensive study needed. Topography, bathymetry, current geotechnical data and biological & ecological systems at work in the pond; nesting areas, flora/fauna survey, etc.
- Potential for dredging (hydrolic or mechanical).
- Natural water source enhancement - storm-water capture, grading, & spring confirmation.

LANDSCAPE

- Throughout the park, there will be a areas of maintained turf-grass (such as in the open lawns) along with areas of native grass and wildflowers that are only mowed/maintained 1-2 times per years. These native areas are seeded with over 50 species of hardy native grass and wildflowers that will provide habitat, food, cover & nesting material as well as beautiful seasonal color.



OTHER COMPONENTS OF THE VISION PLAN

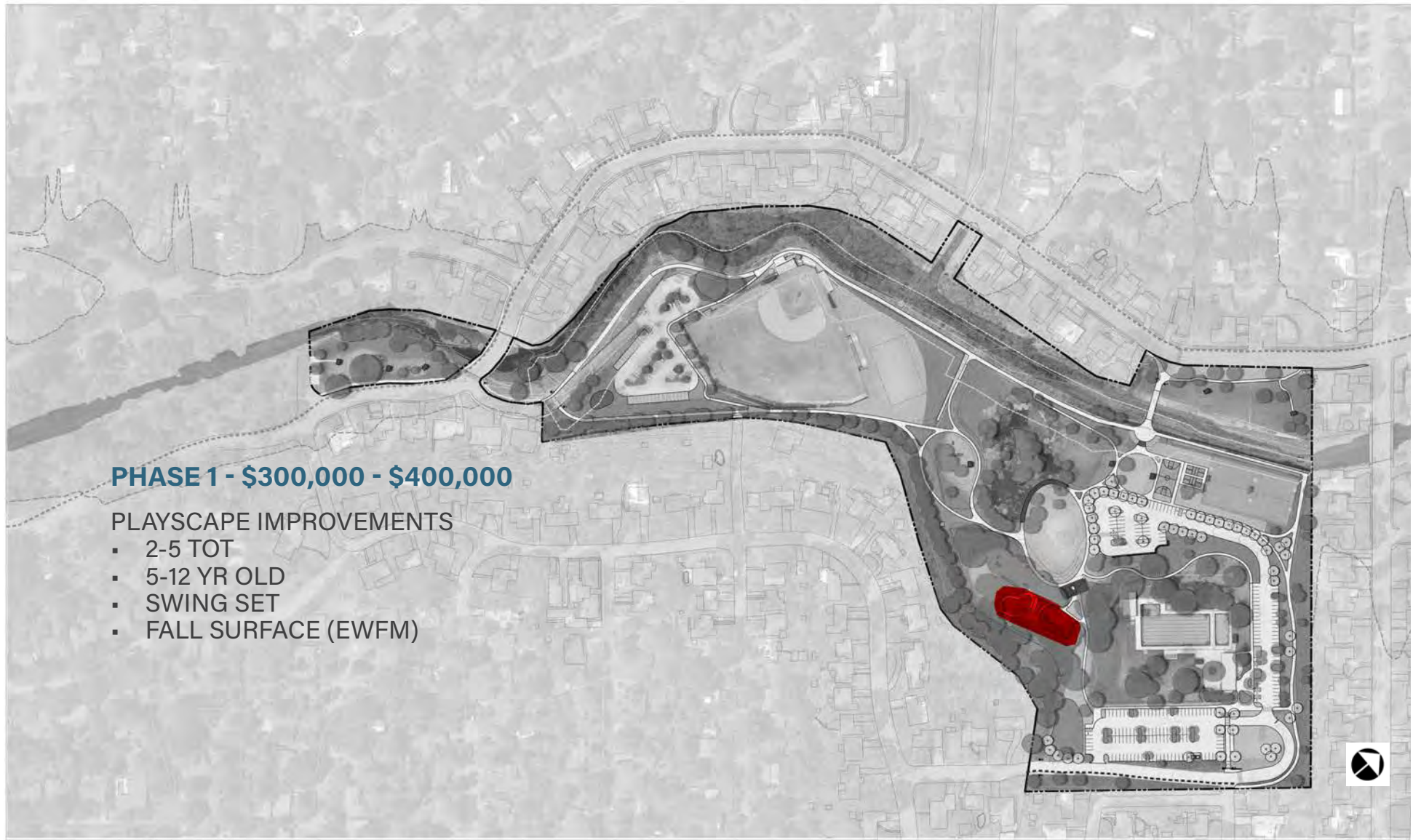
INTERPRETIVE OPPORTUNITIES

A number of interpretive opportunities are presented in the vision plan to help guide development. These ideas came from public comments and the technical advisory group and have been conceptually developed by the design team. They include *Who is Beverly S. Sheffield?* , *Underwater in the 100 Yr. Flood!* , *Historic Rock Quarry*, and *Plesiosaur & Creatures of the Park* wall graphic concept.

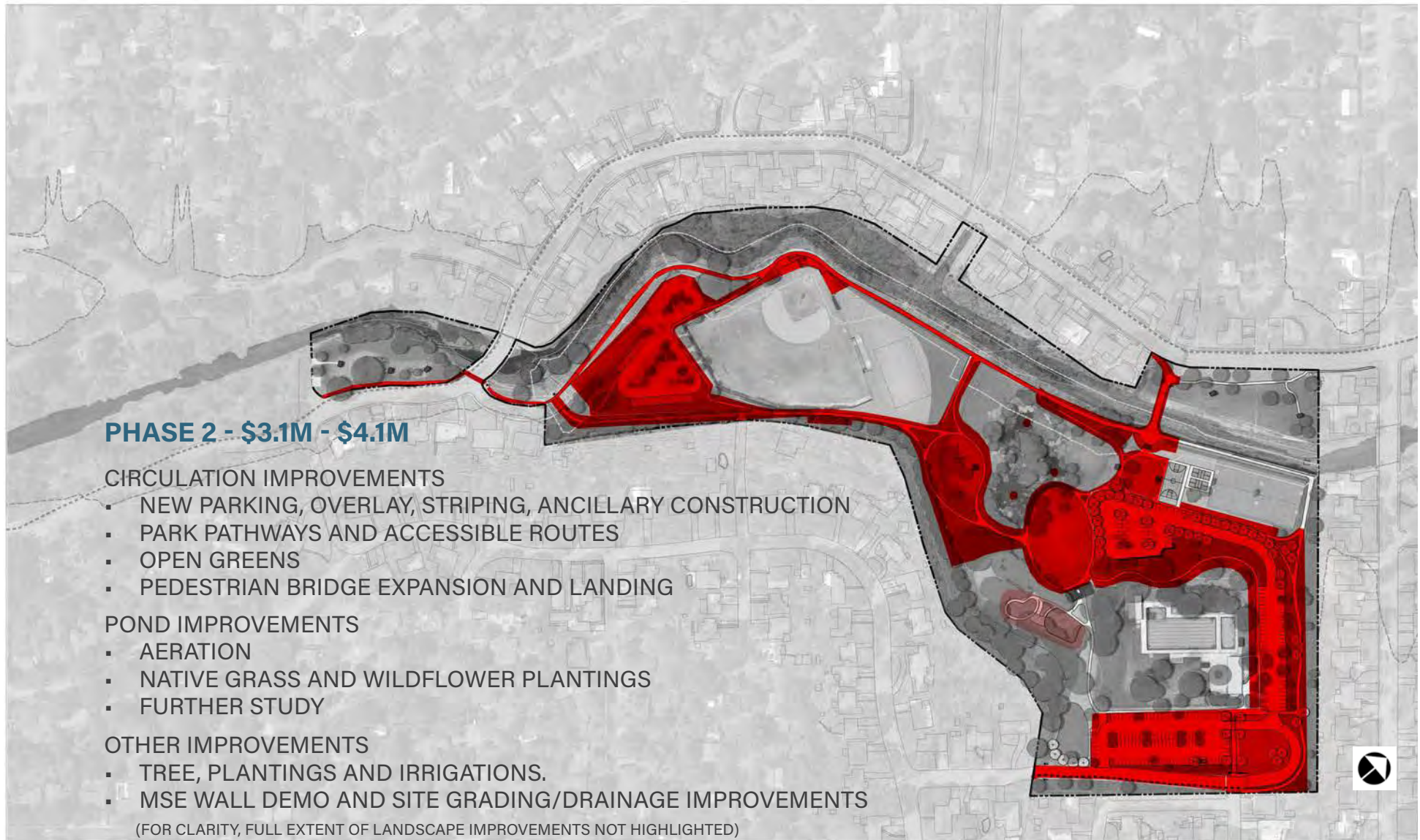


Concept of plesiosaur wall graphics

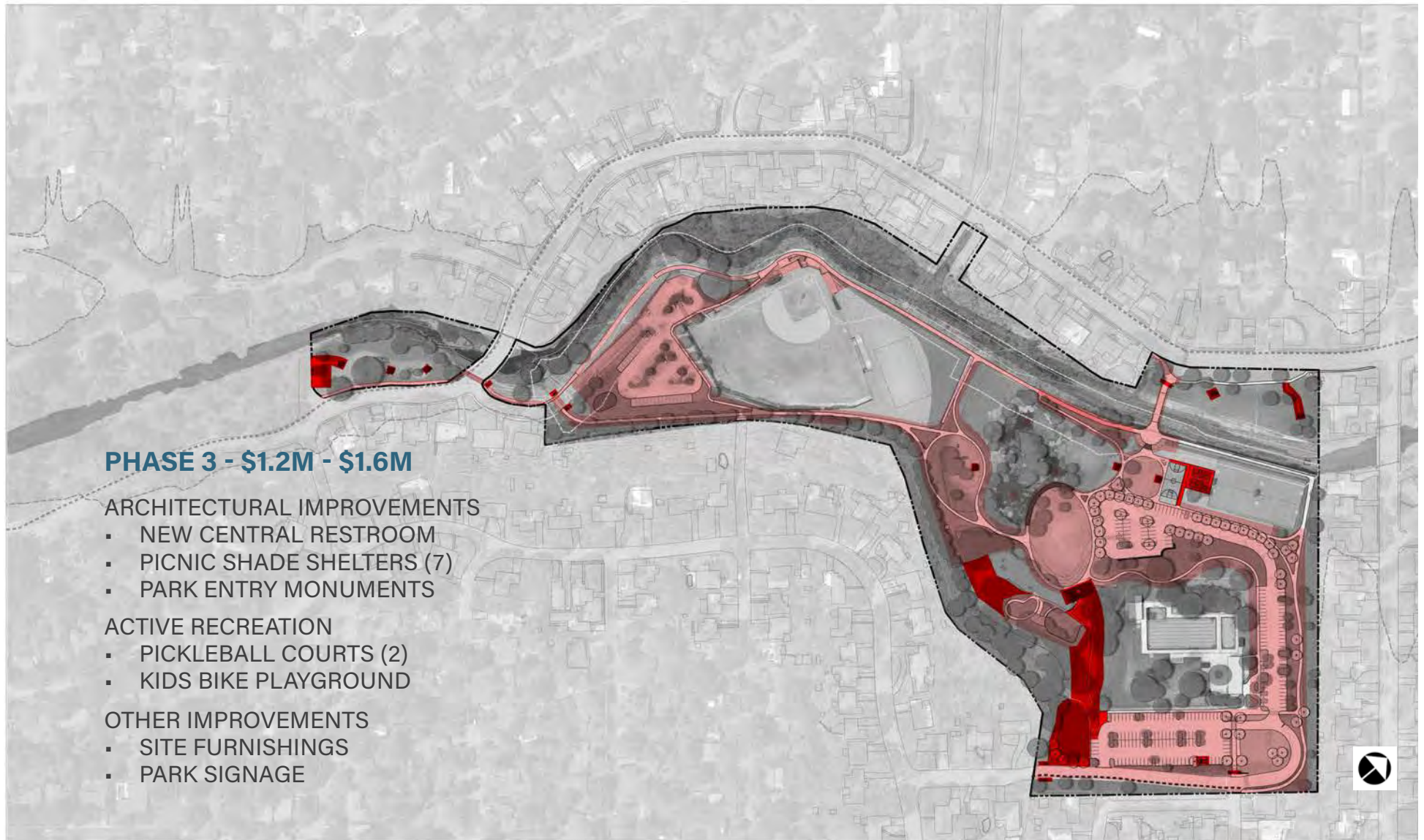
VISION PLAN RECOMMENDED PHASING



VISION PLAN RECOMMENDED PHASING



VISION PLAN RECOMMENDED PHASING



BEVERLY S. SHEFFIELD NORTHWEST DISTRICT PARK VISION PLAN

REQUEST FOR RECOMMENDATION FOR APPROVAL

For more information, please visit the project website or QR code below.

<http://www.austintexas.gov/sheffieldNWpark>

