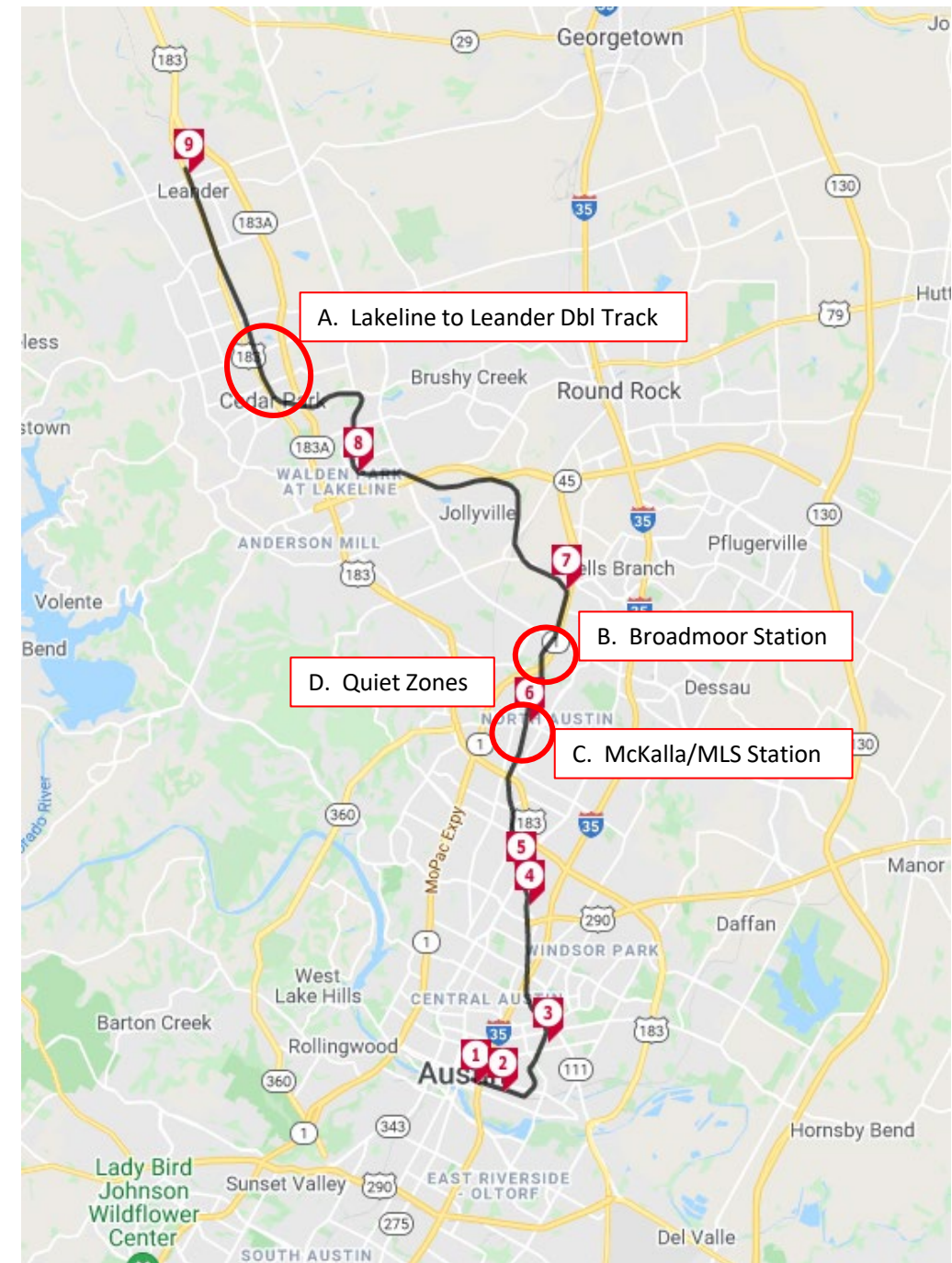


Agenda

Programmed Improvements

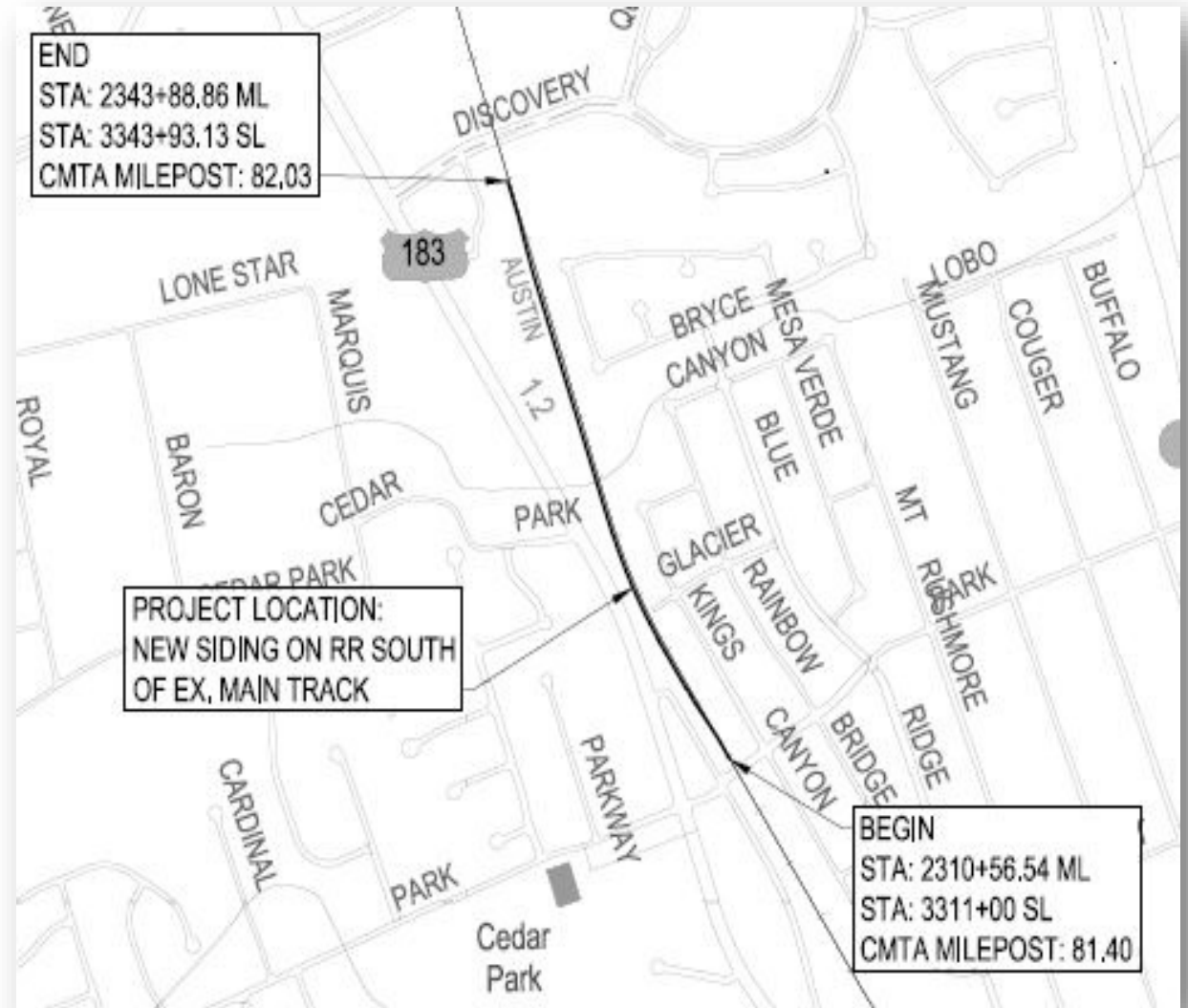
- Lakeline to Leander Double Track
- Broadmoor MetroRail Station
- McKalla/MLS MetroRail Station
- Quiet Zones



Lakeline to Leander Double Track Project

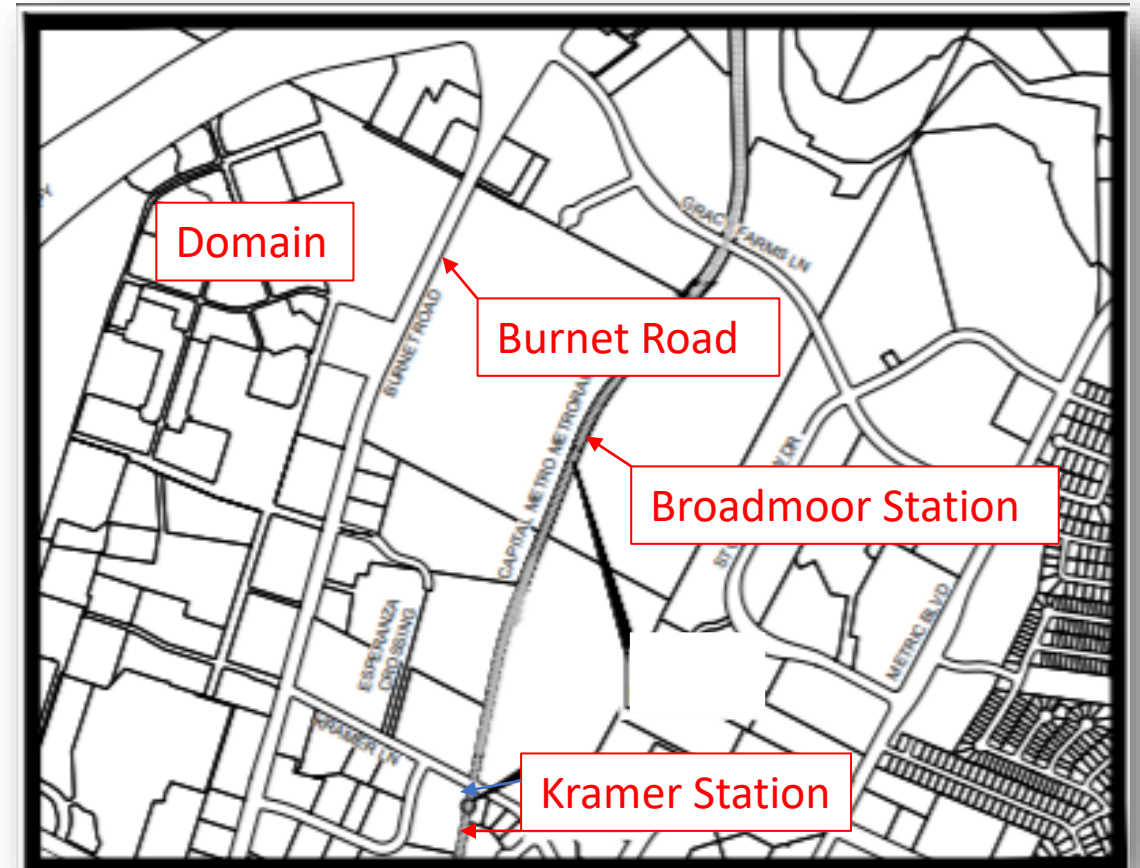
Park Street to Discovery Blvd

- Currently, there is a single main track between the Lakeline and Leander Stations
- New 3350 LF double track to establish a zone for passing trains
 - Turnouts
 - Replace railroad bridge
 - Retaining Walls
 - Minor utility work
- Provides improved service frequency and reliability; continuous improvement of the customer experience
- **Construction in progress**
 - Retaining wall construction complete
 - Bridge replacement and culvert construction Feb 19 thru Feb 22
 - Rail track construction to begin April 5, 2022
- **Schedule**
 - Project Completion Fall 2022

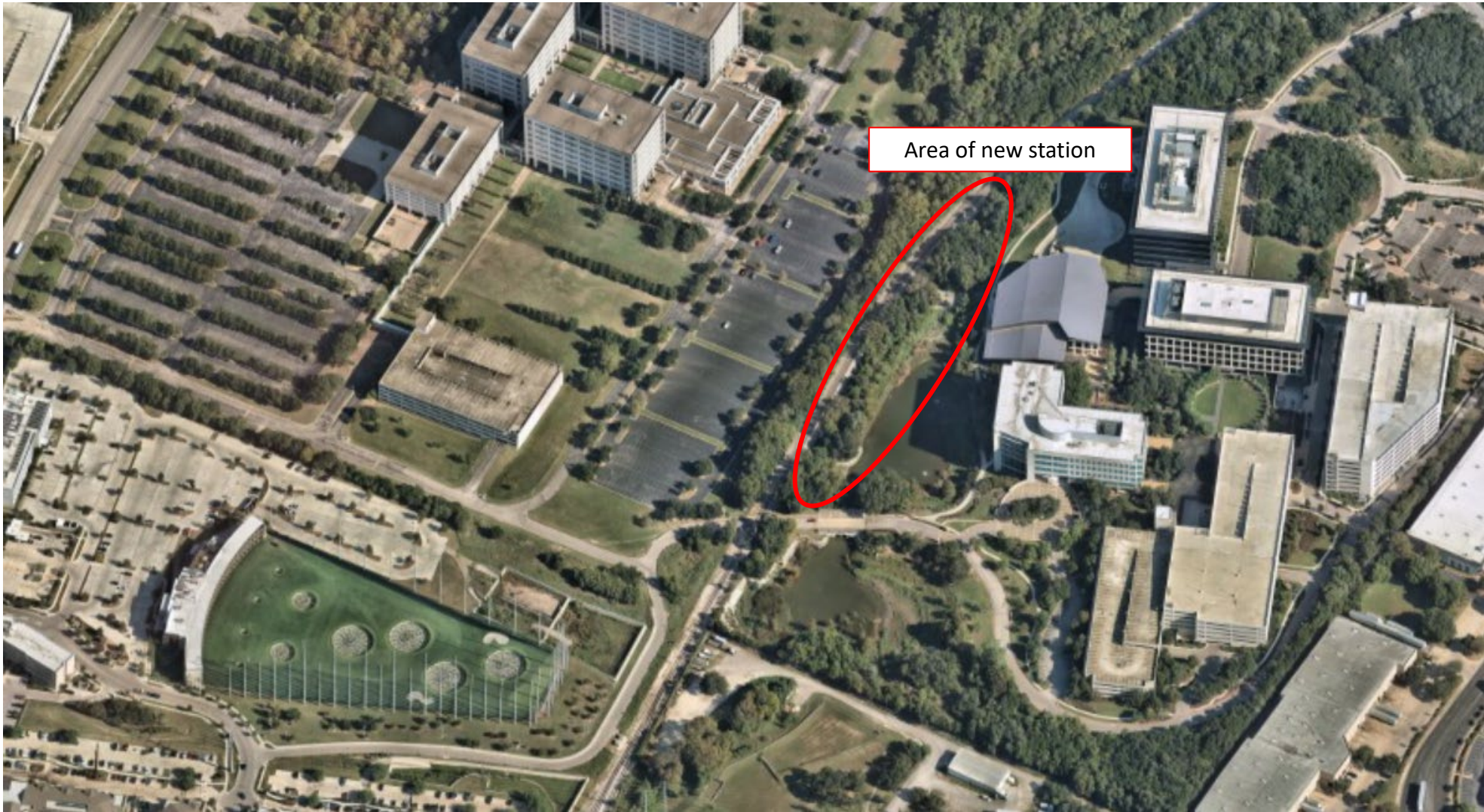


Broadmoor MetroRail Station-Overview

- New multi-modal transit hub
- Adjacent to the Domain on N. Burnet Road
- Half mile north of the existing Kramer station
- One mile north of the new Austin FC Q2 Stadium
- Direct connectivity to the 803, and 466
- Construction to start in Fall 2022



Broadmoor MetroRail Station



Looking north towards new Broadmoor Station



Broadmoor MetroRail Station-Amenities

- Rail station with two double length, covered platforms
- Over ½ mile of new double track as part of the new station
- More than 400 shared parking spaces for transit users
- Abundant pedestrian and bike friendly pathways
- Safety and security enhancements



Rail Station at Night
Artist conceptual rendering



Broadmoor P3 Development - Benefits

- Increases MetroRail Red Line station annual boardings
- Provides a multi-modal transit connection in North Austin (Austin's second downtown)
- Connected to a high-density, mixed-use development with a safe and walkable street grid
- Leverages private investment for a public project
- Supports the *Imagine Austin* vision of a more compact and connected city
- Shared Use Path for bikes and pedestrians on the westside of the platform



Platform Looking North

Artist conceptual rendering



McKalla/MLS MetroRail Station

Based on Preliminary (60%) Designs

Project includes:

- New passenger rail station
- Customer amenities
- Site specific canopy designs
- Crowd control & safety provisions
- Double tracking
- Drainage improvements
- Train signals & control systems
- Modifications to grade crossings
- Shared Use Path
- Sustainability Features

Schedule

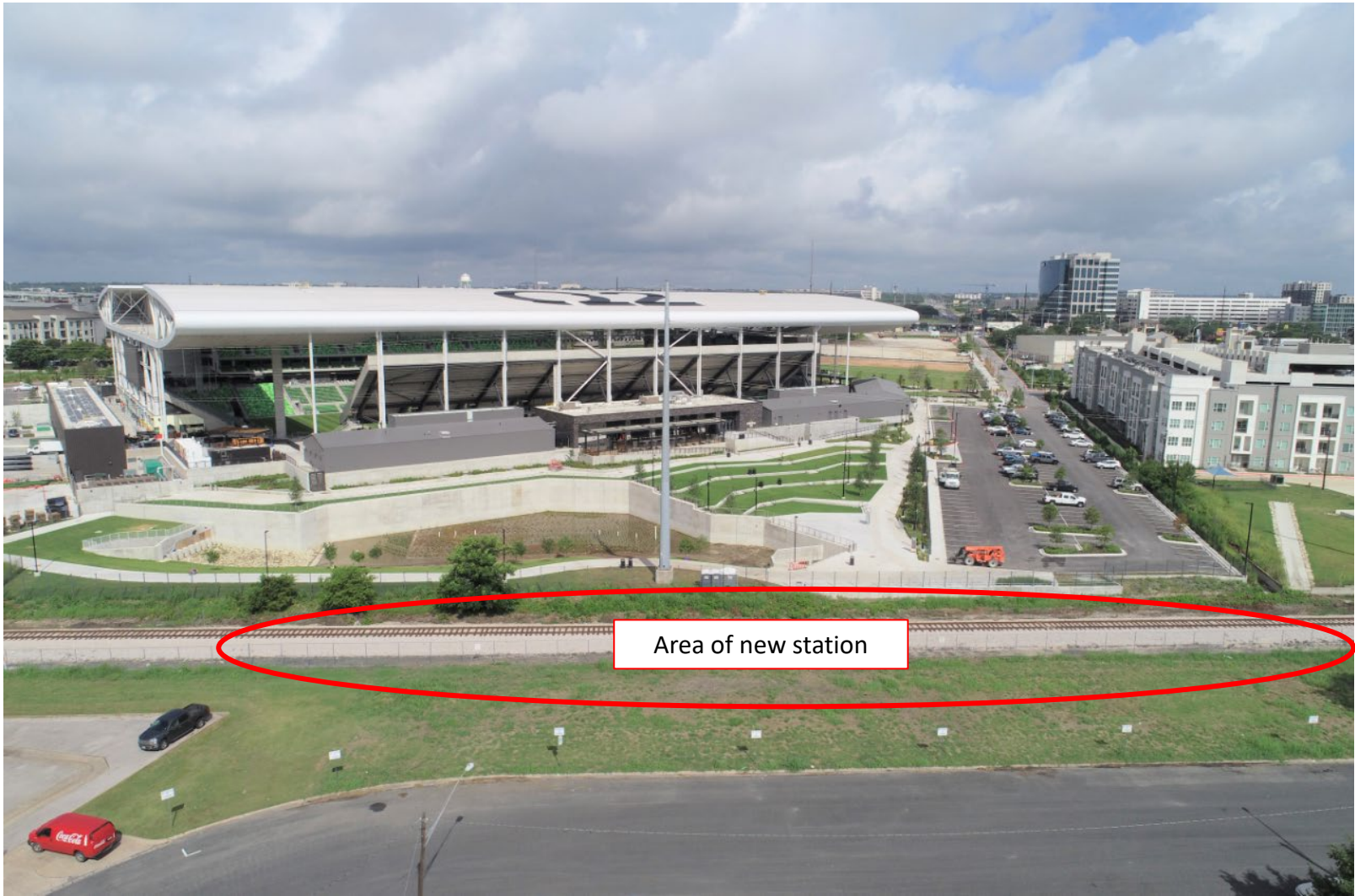
- McKalla Station D/B Award March '22
- Double Track & Drainage (D-B-B) Award June '22
- Project Completion Fall 2023

Coming Fall 2023



McKalla/MLS MetroRail Station

Based on Preliminary (30%) Designs



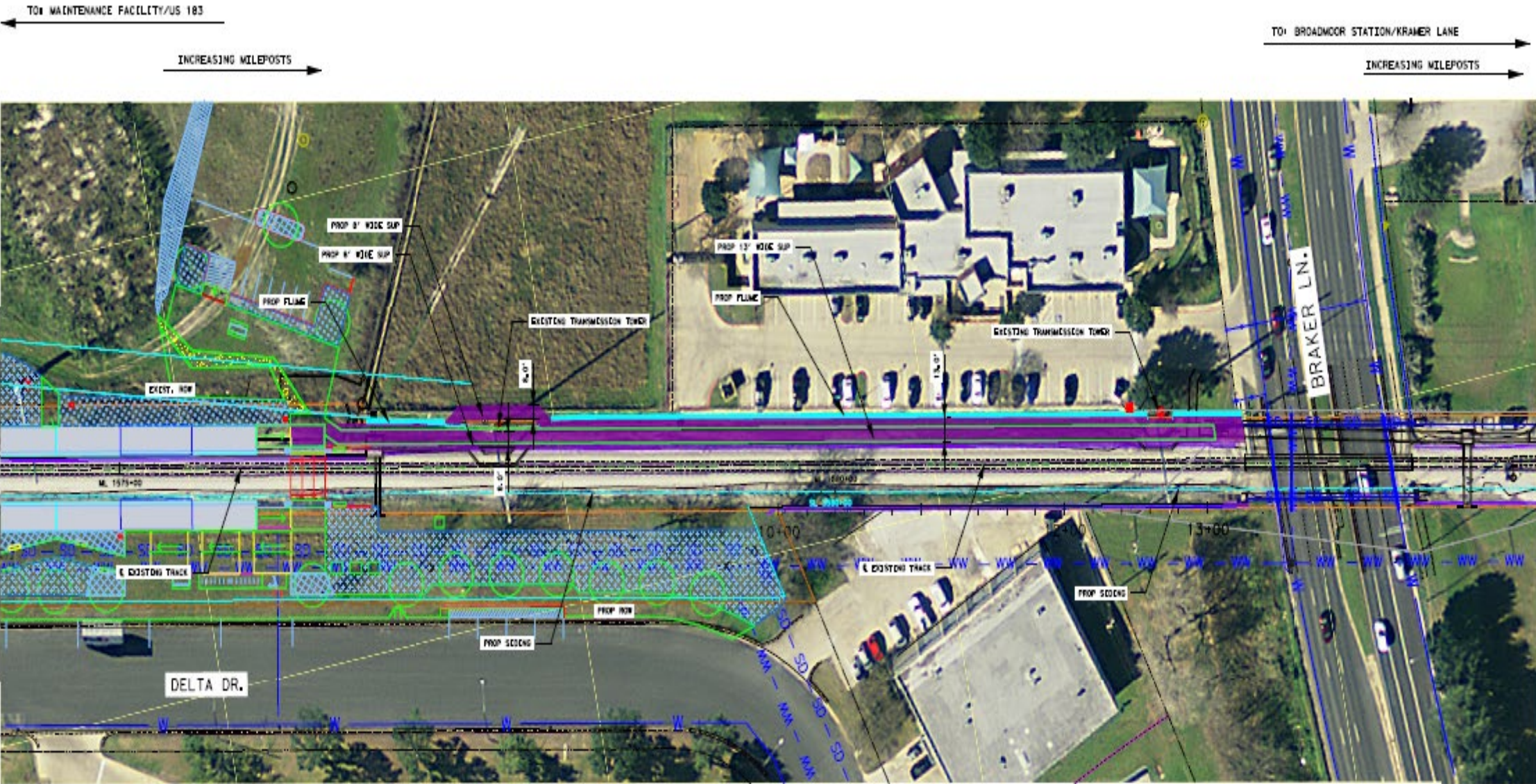
Area of new station

Looking west towards new Q2 Stadium



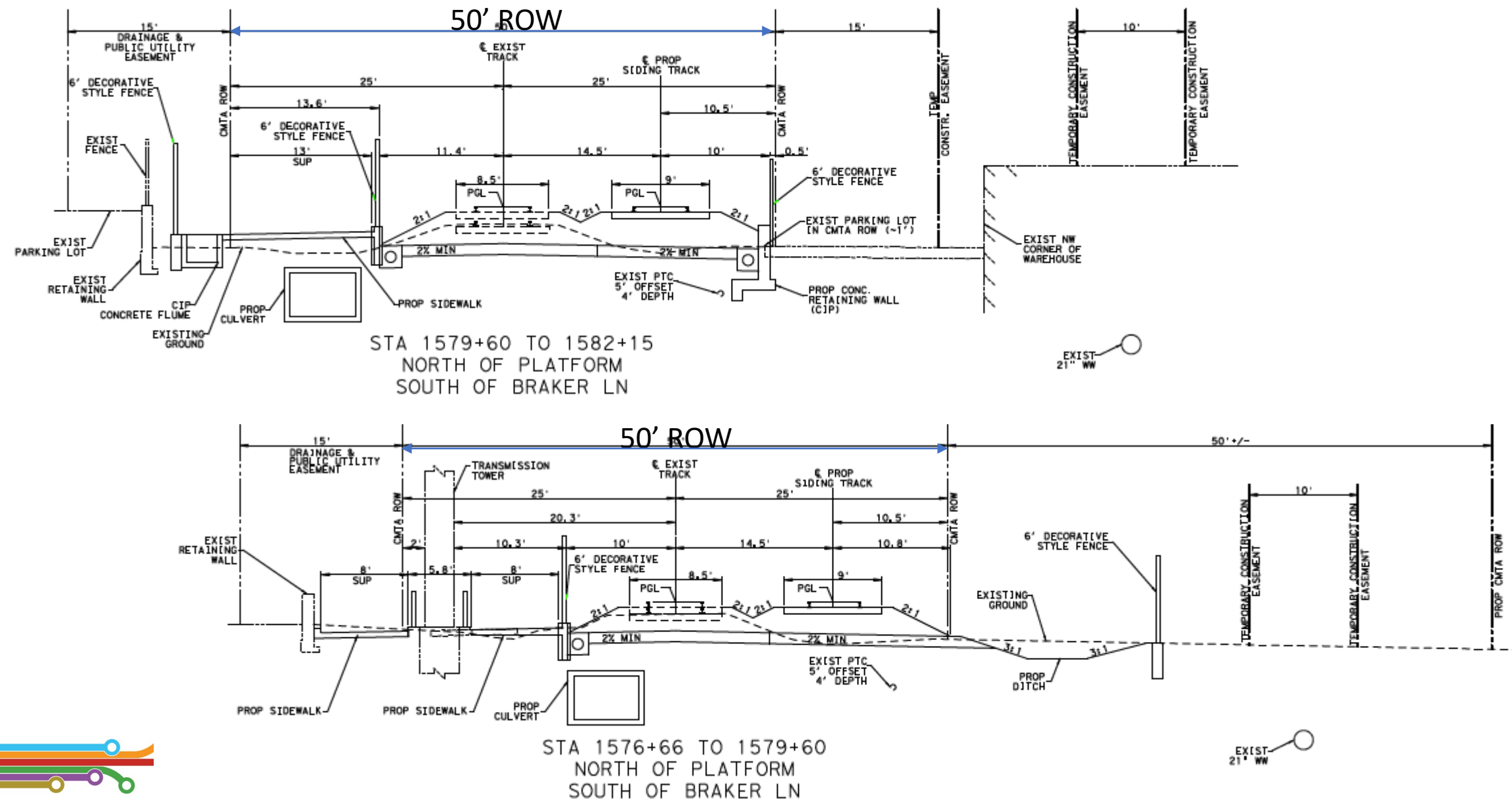
McKalla/MLS MetroRail Station

Shared Use Path for Bikes and Pedestrians – in design development



McKalla/MLS MetroRail Station

Shared Use Path for Bikes and Pedestrians – design development



McKalla/MLS MetroRail Station

Shared Use Path for Bikes and Pedestrians

Points considered for Design:

- 13' wide Bike and Ped shared use path (SUP) within CMTA R/R ROW (600 LF), south of Braker Lane up to 24' Ped Crossing near the west side platform
- Stormwater Trench Drain (U-shaped) to be constructed within the City Public Utility Easement (PUE) – parallel to the track, but outside R/R ROW
- Drainage laterals from the Trench Drain to be connected to the drainage culvert underneath
- At AE Transmission Tower location within R/R ROW, the shared use path to be split around the transmission tower; 8' within the R/R ROW and 6' within the PUE



McKalla/MLS MetroRail Station

Based on Preliminary (30%) Designs



Artist's conceptual rendering



Quiet Zones

- Work with our partners in the city and the FRA to design and implement additional quiet zone crossings.
- Conduct a diagnostic review to determine the requirements to convert four additional crossings into quiet zones.
- During normal operating conditions, CapMetro will be able to cross these intersections without sounding the train horn.
- Design and construct the necessary protection and safety devices at:
 - Rundberg Lane
 - Rutland Drive
 - Braker Lane
 - Kramer Lane





QUESTIONS?



Thanks for joining us.
Visit ProjectConnect.com for more information.

