

# AUS - Airport Expansion and Development Program



Austin-Bergstrom  
International Airport



## For Airport Advisory Commission

Tracy Thompson, Esq.  
Interim Chief Development Officer  
Chief Officer – Administrative and External Affairs

April 12, 2022



# Overview

## Airport Activity Update

## Airport Expansion and Development Program (AEDP)

- Upcoming Council Action Items
- Project Connect Future Briefing



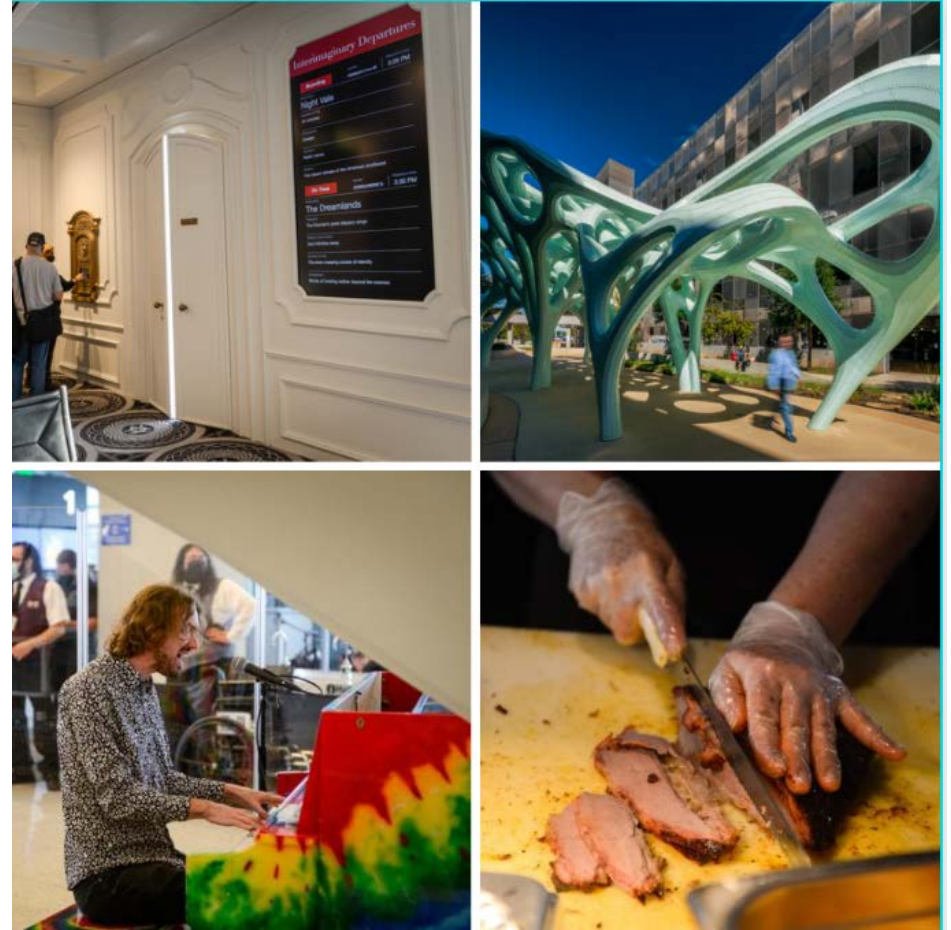
Austin-Bergstrom  
International Airport





# AUS – Keeping It Weird

- In 2021, AUS passengers:
  - Ate 75,390 pounds of brisket
  - Ate 1.46 million breakfast tacos
  - Enjoyed 258 live music performances
  - Welcomed two new permanent Arts in Public Places art installations
    - *MEANDERWING*
    - *Interimaginary Departures*



# AUS Activity Update

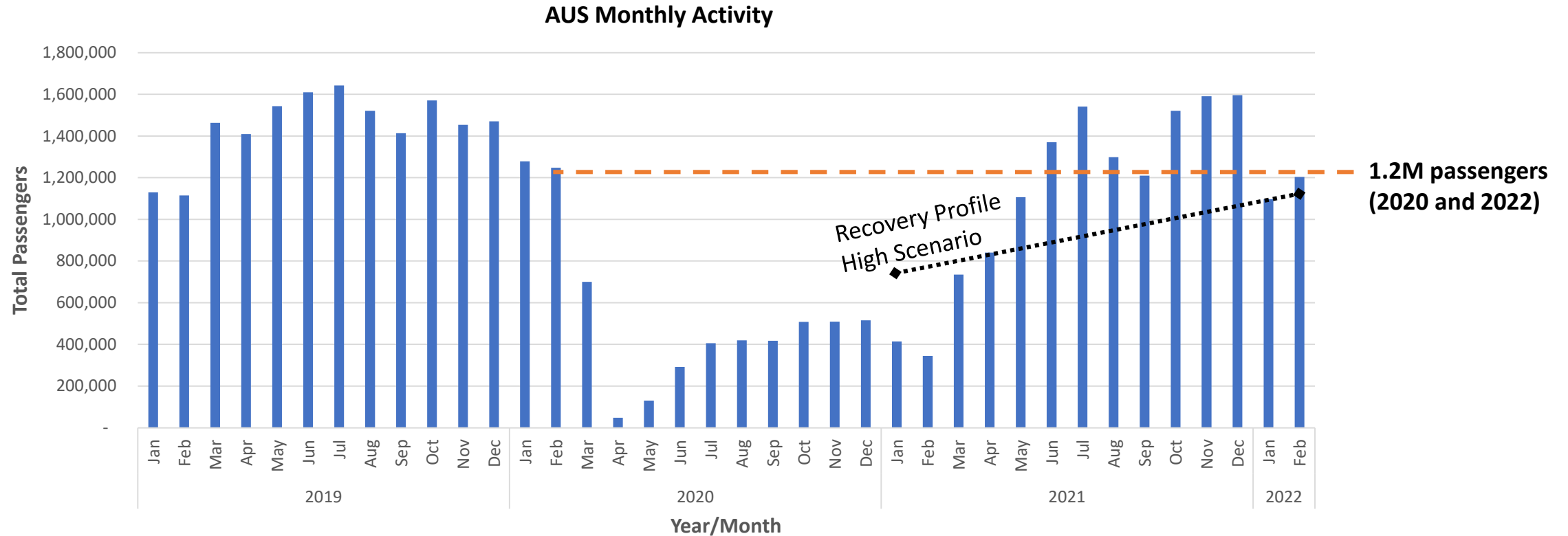


Austin-Bergstrom  
International Airport



# AUS Activity Has Recovered

February 2022 activity levels nearly equal to February 2020



Source: City of Austin Department of Aviation





# Airport Expansion and Development Program



Austin-Bergstrom  
International Airport





# Long-range Airport Program

An aerial rendering of a large airport terminal complex. The terminal is a long, curved building with multiple levels and a large roof. To the left of the terminal is a large parking lot filled with cars. To the right of the terminal is a large tarmac area with many aircraft parked at gates. The image is overlaid with several callout boxes in blue and red, pointing to specific areas of the airport. The main title 'Long-range Airport Program' is in the top left corner.

Utilities and  
Airfield  
Infrastructure

New Concourse B

Optimize  
Barbara Jordan  
Terminal

Future Roadway  
and Landside  
Improvements

Future Barbara  
Jordan Terminal  
Expansion



# Airline Growth/Operational Challenges

The journey to a new Airport Expansion and Development Program (AEDP)

## 2021 → **Launched the Airport Expansion and Development Program**

Optimize Barbara Jordan Terminal

Airfield/Utility Improvements

Develop Concourse B and Connecting Tunnel

## 2022 → **AEDP Facility Design while Addressing Current Constraints**

Initial focus on Optimization of Barbara Jordan Terminal Capacity

20.2 MAP Forecasted for 2022

Currently - Forecasted Growth to 30 MAP by 2030

Operational Efficiency and Passenger Experience

**EXPERIENCE AUS**

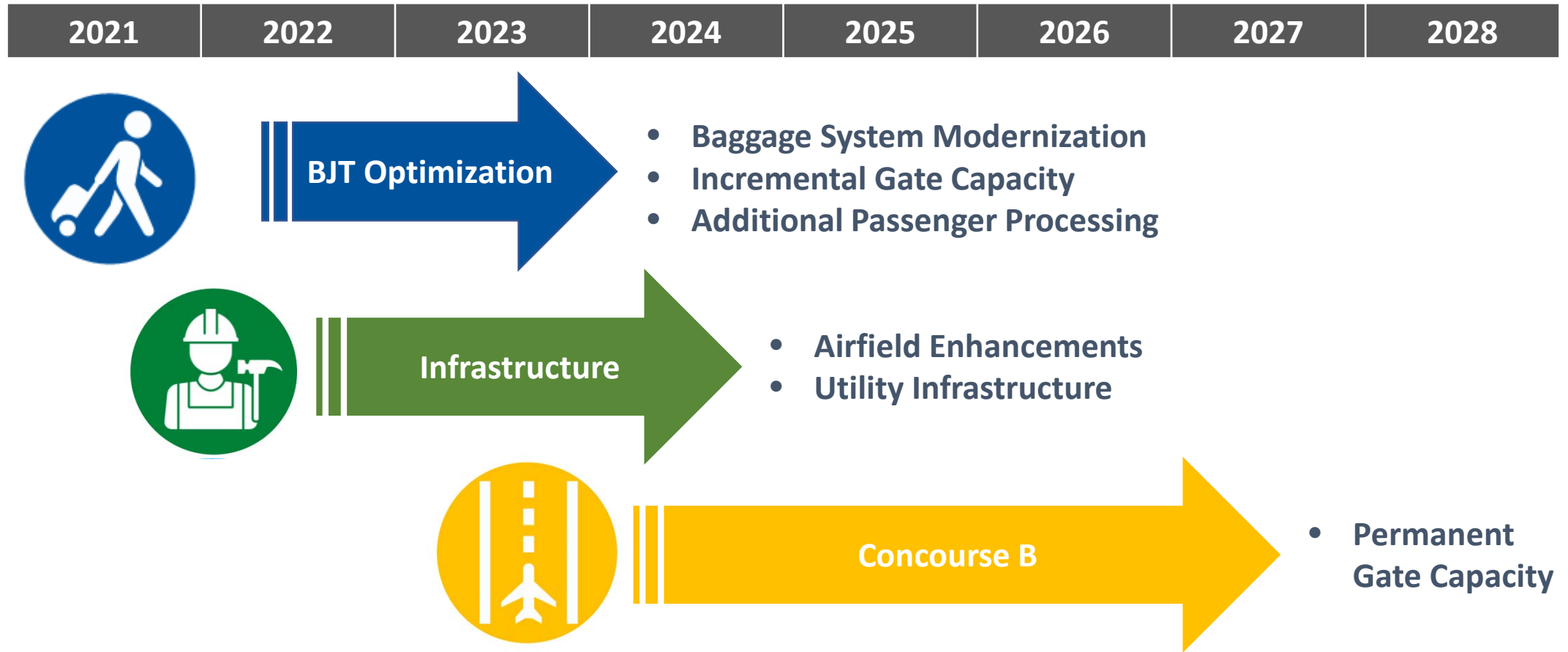


Austin-Bergstrom  
International Airport





# AEDP Anticipated Schedule



# AUS AEDP Elements

Overall AEDP scope and budget - currently in development

- Meet the air service needs of Central Texas
- Meet the needs of airlines serving the airport and region
- Maintain excellent passenger experience
- Provide flexible expansion for dynamic airline growth





# AUS New Inline Baggage Handling System



# Passenger Processing Improvements

Ticket counters, baggage systems, and security screening for airline service growth

## New Checked Baggage Screening System

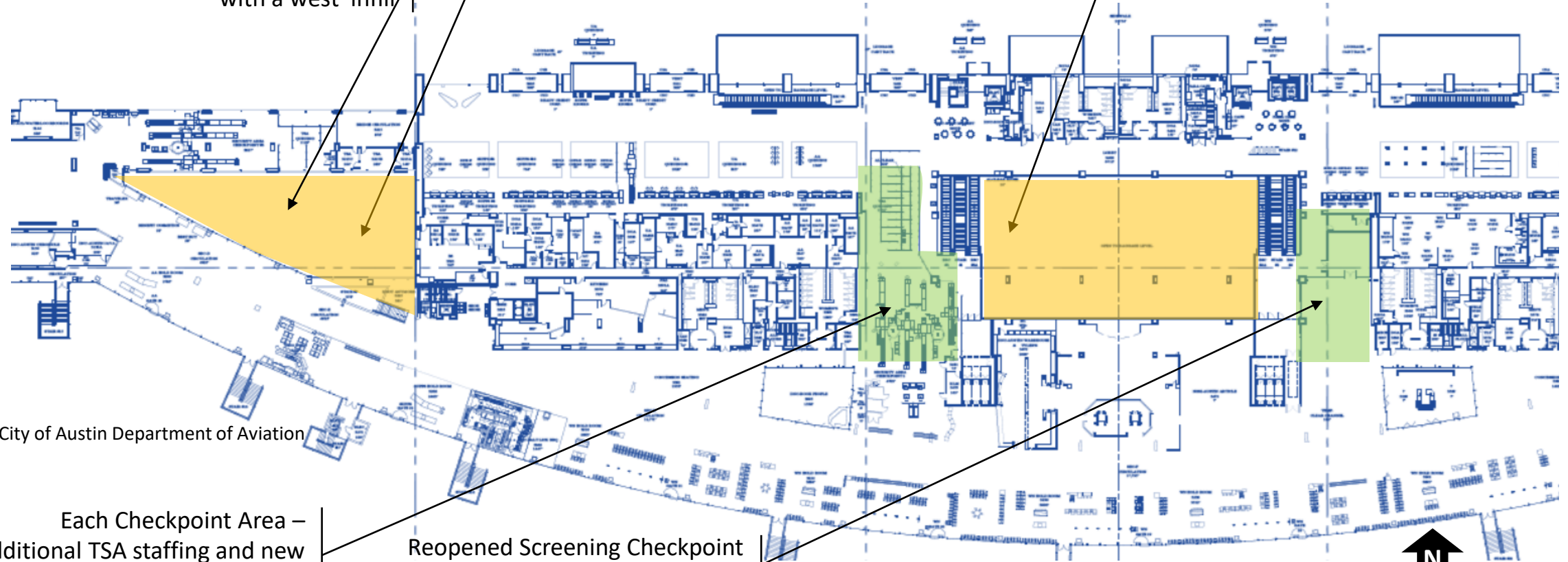
Consolidated, higher capacity system with a west infill

## West Infill (~8,000 square feet)

Provides new space for passenger processing

## Atrium Infill (~13,000 square feet)

Provides new ticket counter space and enables future terminal expansion



Source: City of Austin Department of Aviation

Each Checkpoint Area –  
Additional TSA staffing and new  
screening machines to be secured

Reopened Screening Checkpoint  
3 new lanes plus 1 expansion lane



Not to Scale



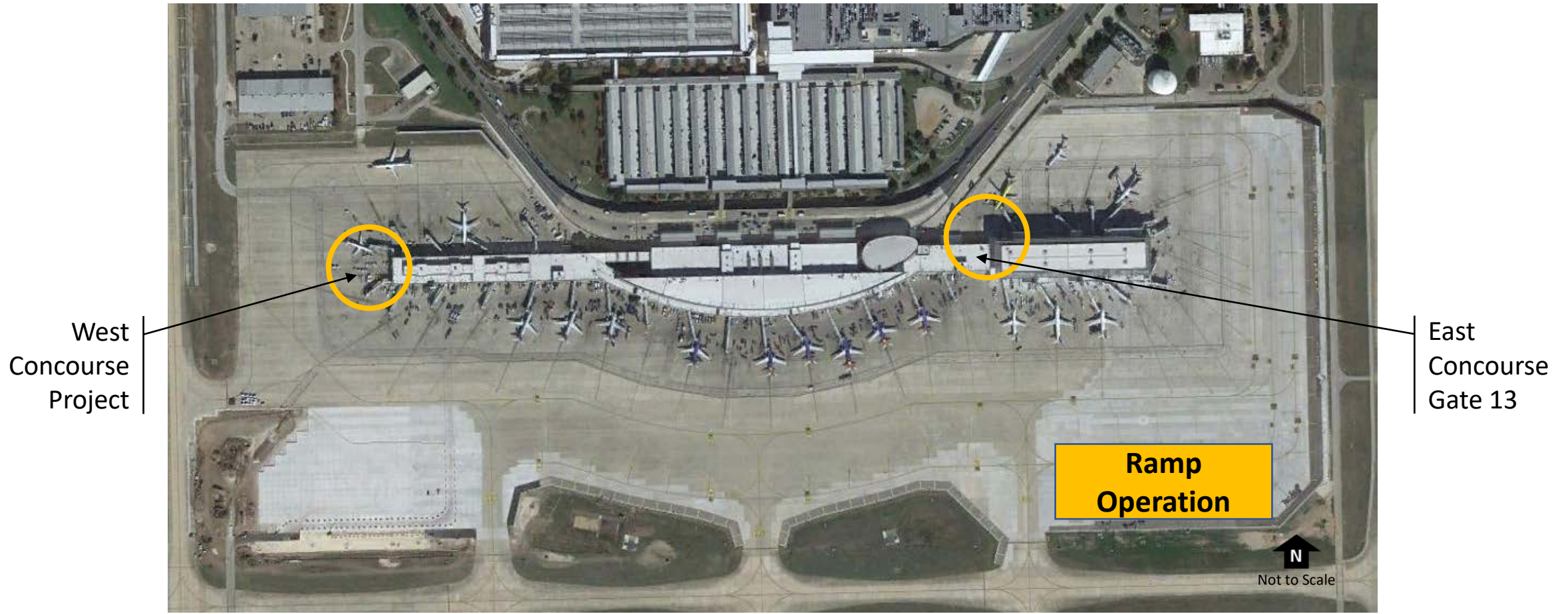
Austin-Bergstrom  
International Airport





# Gate Capacity Expansion

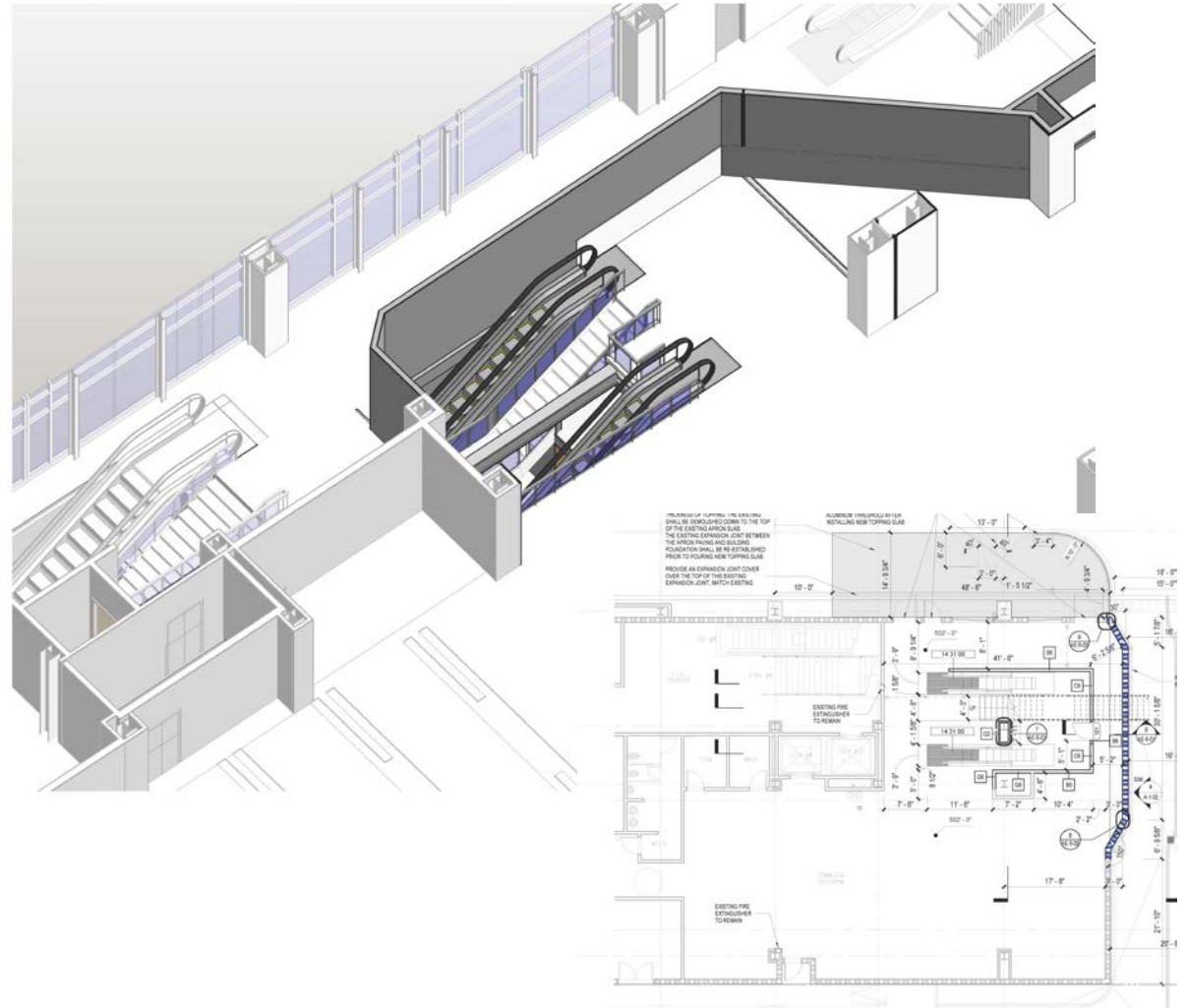
## Barbara Jordan Terminal – New Contact Gates and Busing Gates



# Gate 13



Schedule Goal:  
Start construction in July 2022  
Open by February 2023

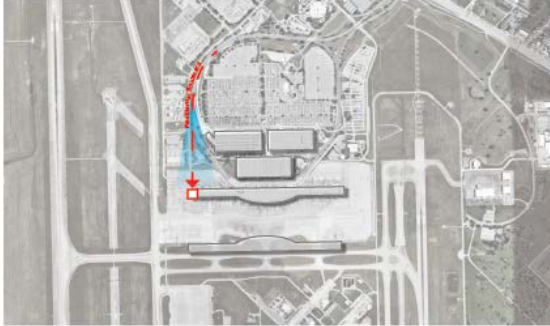




# West Gate Expansion - Concept

## Vision:

Departures  
Presence

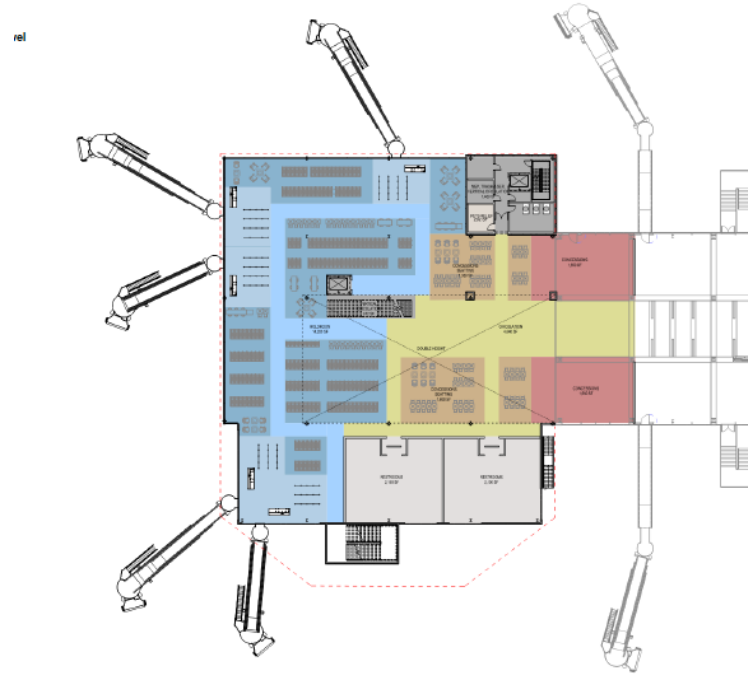


Downtown  
View

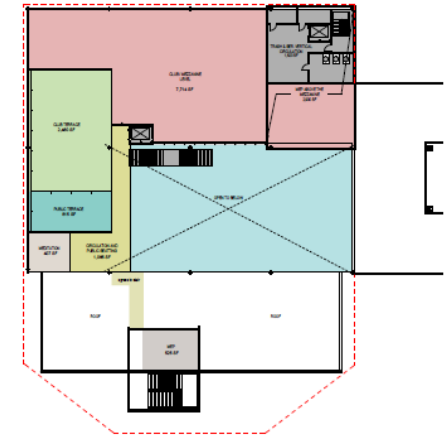


Expansive  
Volume

Fit In with  
existing



Concept Concourse Layout Plan



Concept Mezzanine Layout Plan

# West Gate Expansion – Concept



Existing East End of Concourse



Existing Outdoor Deck



Existing Open Area East End



Concept Wests End Massing -View of South side



Massing View of North side



Massing View of Open Area



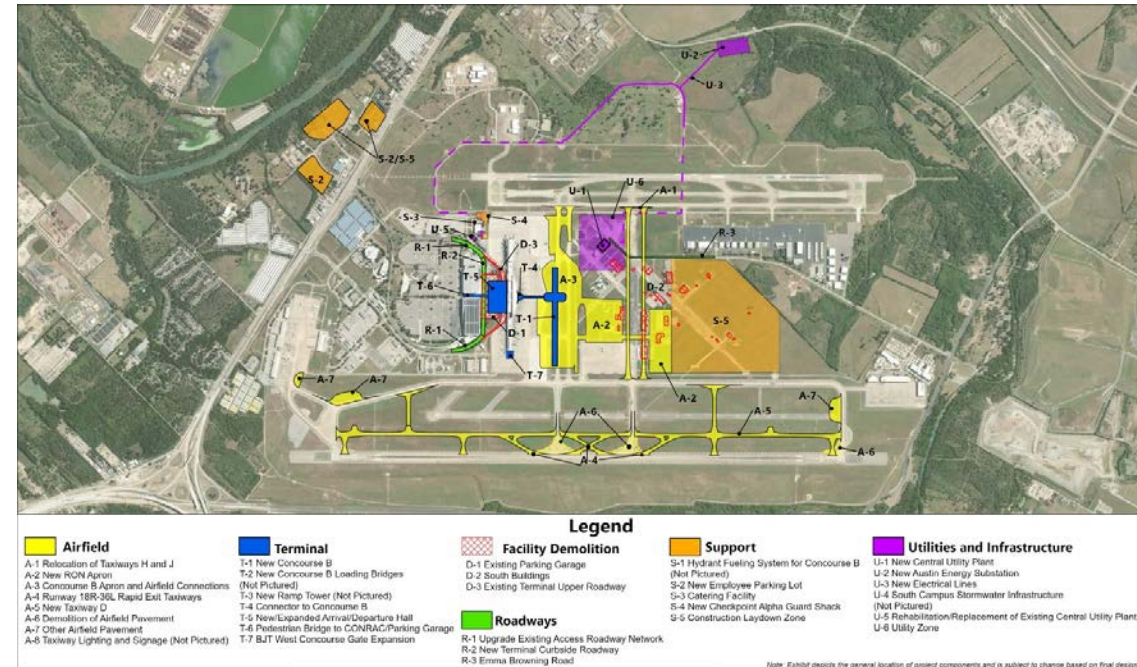
# Environmental Assessment - Schedule

- **Elements:**

- A new 10+ gate midfield concourse & enabling infrastructure
- 3 new gates on the west side of the Barbara Jordan Terminal
- A new a new Central Utility Plant & new Austin Energy Substation

- **Schedule:**

- Draft EA Virtual Meeting  
March 23, 2022
- Draft EA Open House  
March 26, 2022
- Public Comment Period  
April 7, 2022
- FAA Filing Date  
April 30, 2022



<https://www.austintexas.gov/sites/default/files/files/AUS%20Airport%20Expansion%20and%20Development%20Program%20EA%20-%20Chapter%201.pdf#page=23>

# Professional Services Support

Staggered procurements for evolving professional service support needs

## Executive Program Management Team (PG)

- AEDP Program Management
- AEDP Strategic integration
- AEDP Financial support

## Principal Architect (HNTB)

- Overall Projects programming
- Initial design & engineering
- Integrated project technical expertise
- MWBE participation

## Construction Services Management Team

Procurement Spring 2022

- Project management and construction management
- Project controls
- Risk management and QA/QC
- DBE participation



# Solicitation Updates – Look-ahead

AEDP Program Element	Est. Advertise Date	Proposal Due Date	Estimated Council Date
Professional Design Services – AEDP Airfield Infrastructure	1/31/2022	Closed – In review	Thursday, May 19, 2022
Communications & Marketing Support for AUS for AEDP	3/14/2022	4/21/2022	Thursday, July 28, 2022
Program Management Support Consultant	3/21/2022	05/09/2022	Thursday, July 28, 2022
Airfield Infrastructure Construction – CMR Construction Contract	3/38/2022	05/04/2022	Thursday, September 1, 2022
Infrastructure Demo Contractor	Summer 22	TBD	Thursday, November 3, 2022
Concourse B - Design Consultant	Fall 22	TBD	Thursday, November 3, 2022
South Campus Stormwater Design	4Q22	TBD	Thursday, November 3, 2022
IDIQ Asbestos /Lead/PFAS Remediation	4Q22	TBD	Thursday, December 1, 2022
Concourse B – Construction Contractor	4Q22	TBD	Thursday, December 1, 2022

<https://financeonline.austintexas.gov>

# Project Connect Blue Line



Austin-Bergstrom  
International Airport





- **The Blue Line Project would address the following needs:**
  - Sustainably support Austin's population and economic growth
  - Increase transportation network capacity to meet increasing travel demand
  - Support AUS growth in air travel
  - Provide better transit options linking affordable housing and jobs
  - Support growth of and connectivity to activity centers
- **Estimated Date for Service to AUS - 2029**



Follow progress of  
the program at  
[AustinTexas.gov/AEDP](https://AustinTexas.gov/AEDP)

Questions,  
Comments  
& Discussion

AEDP Contracting &  
Business Opportunities  
[AustinTexas.gov/AEDP-Business](https://AustinTexas.gov/AEDP-Business)



Austin-Bergstrom  
International Airport

