

Proposed Amendment to Lease for East Holly, LLC
417 Red River Street, 3,580 Square Feet



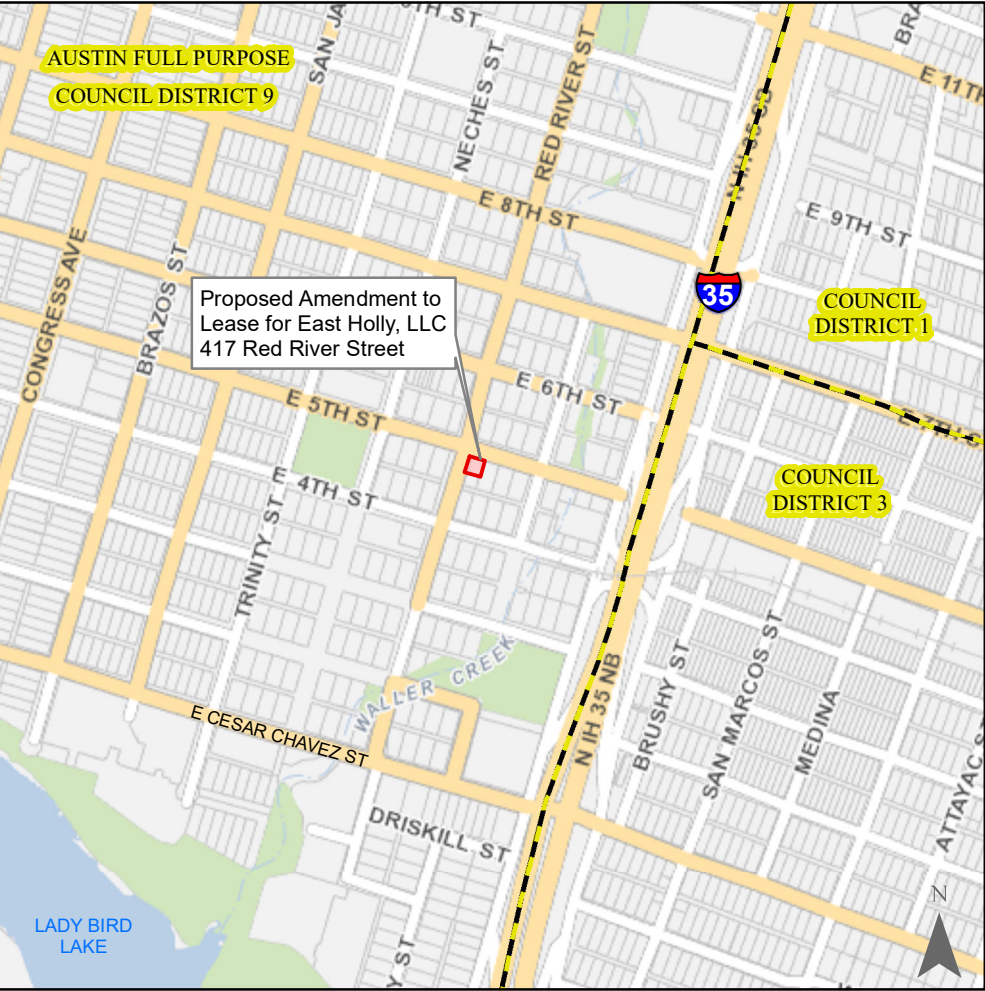
This product is for informational purposes and may not have been prepared for or be suitable for legal, engineering, or surveying purposes. It does not represent an on-the-ground survey and represents only the approximate relative location of property boundaries.

This product has been produced by the City of Austin for the sole purpose of geographic reference. No warranty is made by the City of Austin regarding specific accuracy or completeness.

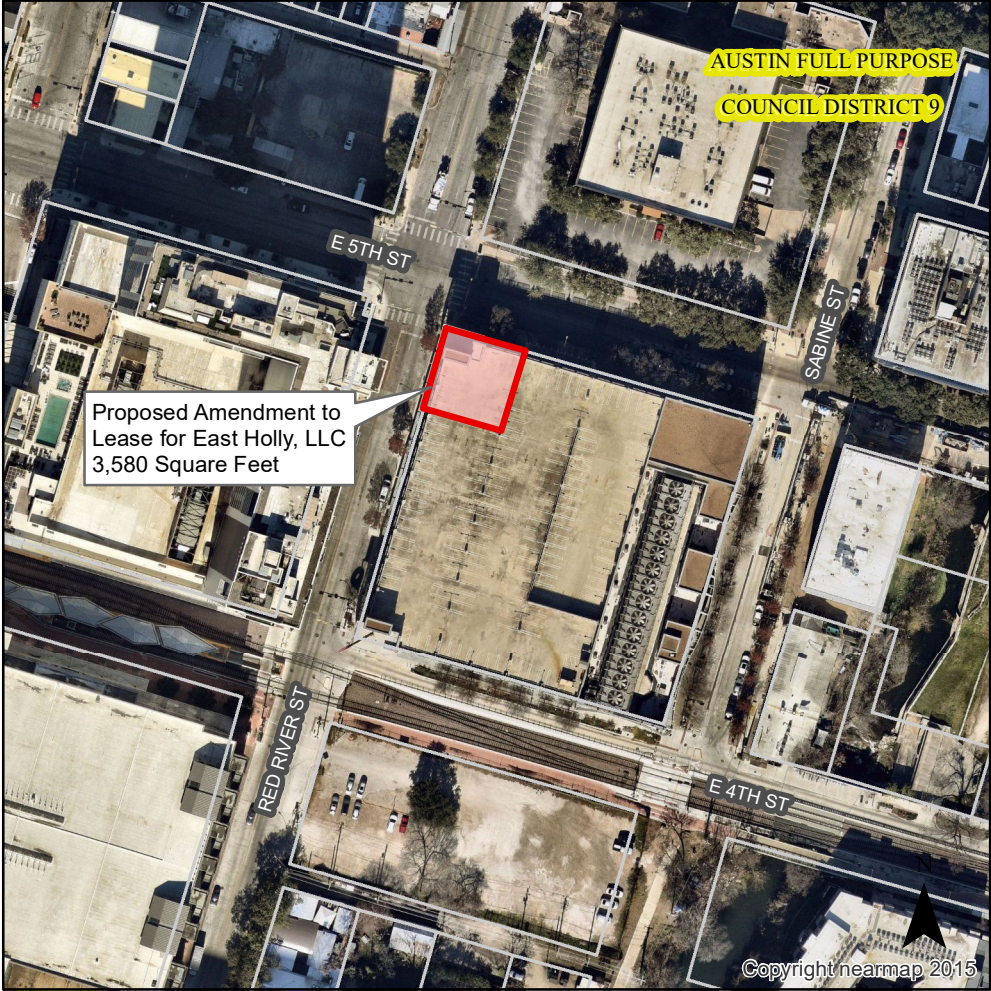
Produced by M McDonald, 4/19/2022

- Proposed Amendment to Lease for East Holly, LLC
- Travis County Appraisal District Parcels
- City Council Districts

Nearmap US Vertical Imagery by ESRI



0 1,000 2,000 Feet



0 200 400 Feet