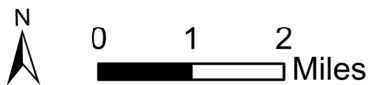


**Existing Speed Limit**

<span style="color: blue;">—</span> 30	<span style="color: yellow;">—</span> 40
<span style="color: green;">—</span> 35	<span style="color: orange;">—</span> 45
	<span style="color: red;">—</span> 50
	<span style="color: black;">—</span> 55

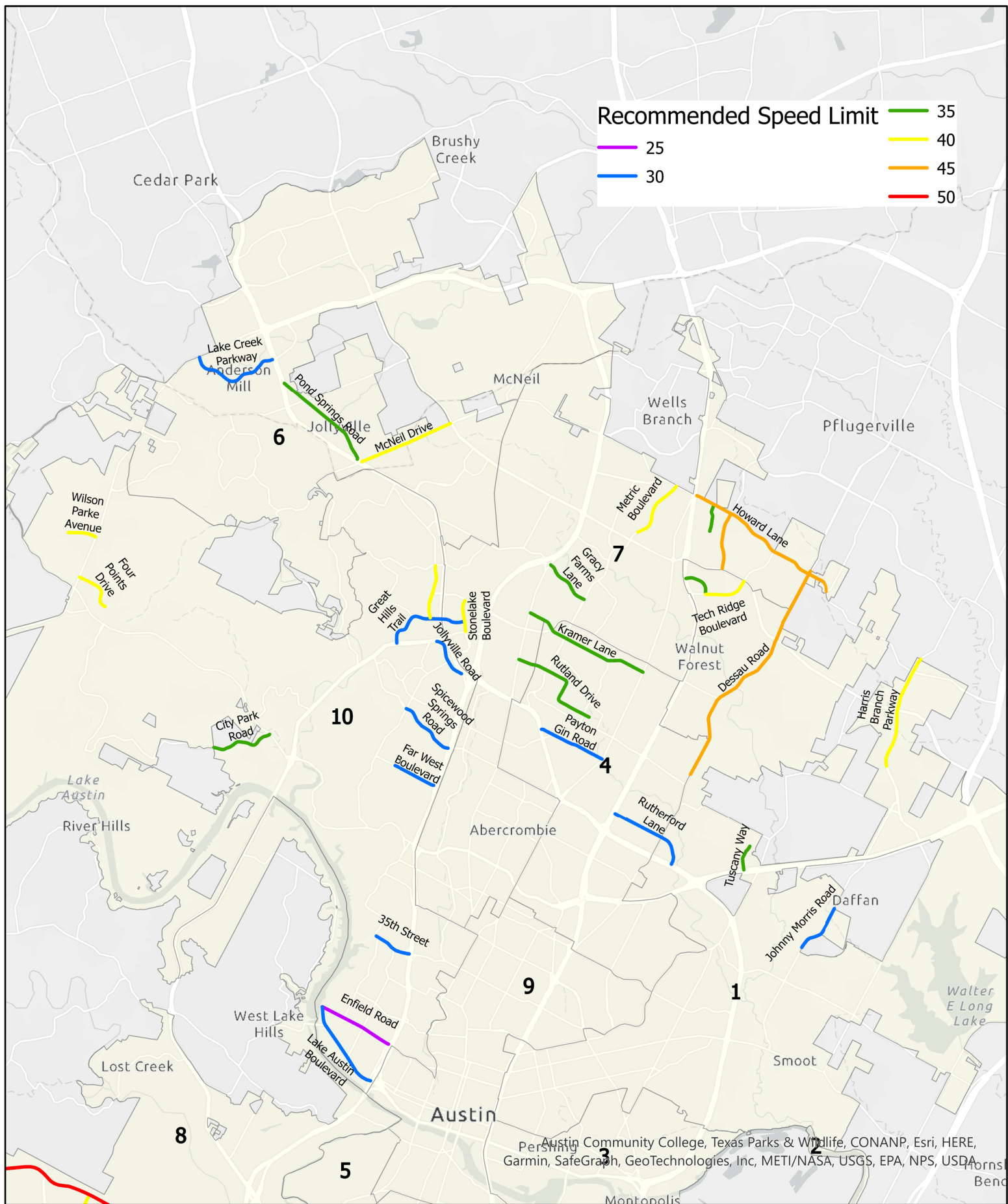
**Existing Speed Limits (MPH)  
Non-Urban Core Arterials  
North Austin**



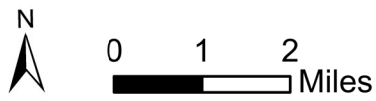
City of Austin  
Transportation Department,  
5/9/2022



Austin Community College, Texas Parks & Wildlife, CONANP, Esri, HERE, Garmin, SafeGraph, GeoTechnologies, Inc, METI/NASA, USGS, EPA, NPS, USDA



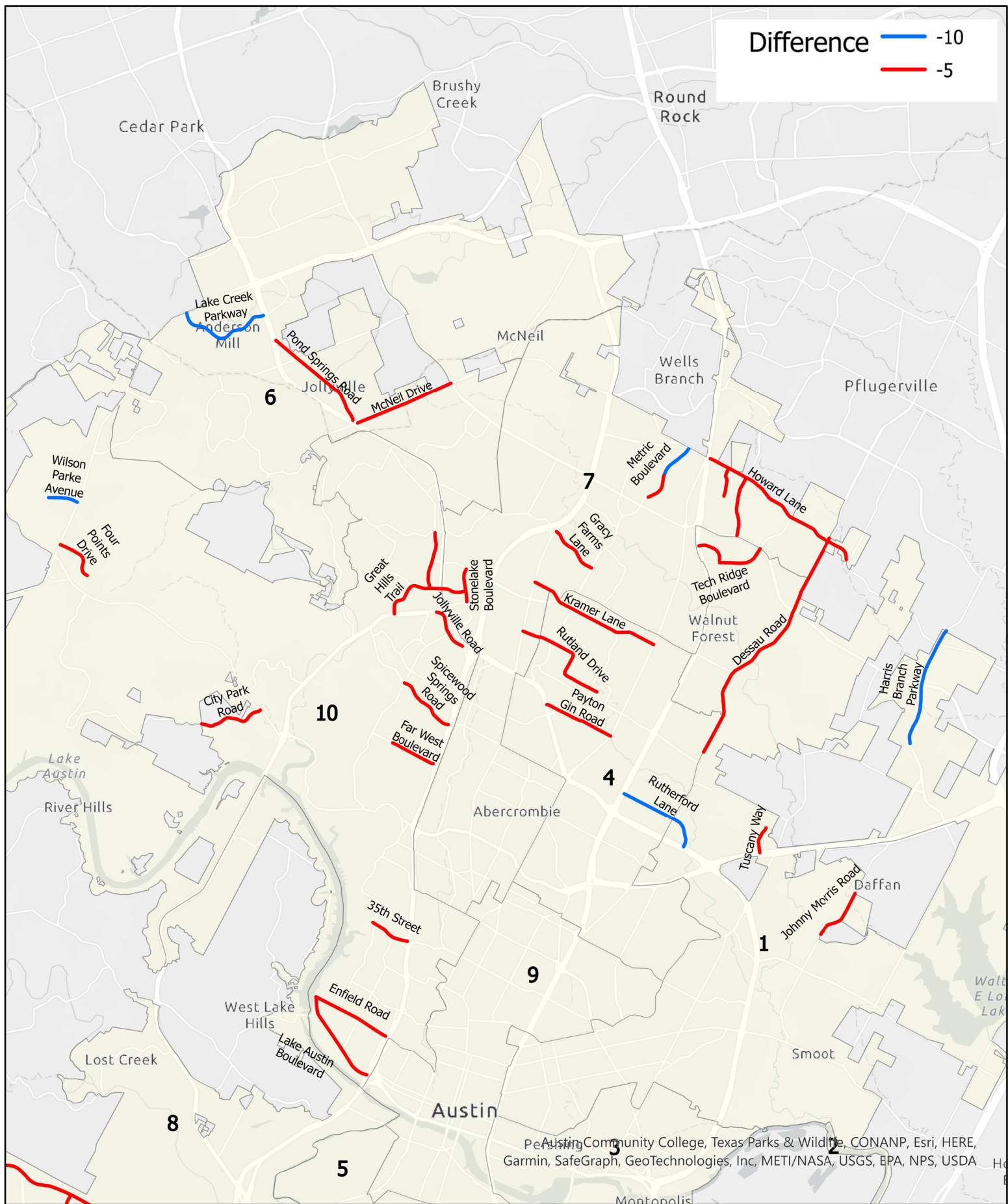
**Proposed Speed Limits  
(MPH), Non-Urban Core  
Arterials, North Austin**



City of Austin  
Transportation  
Department, 5/9/2022

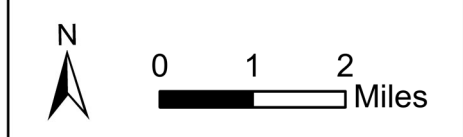


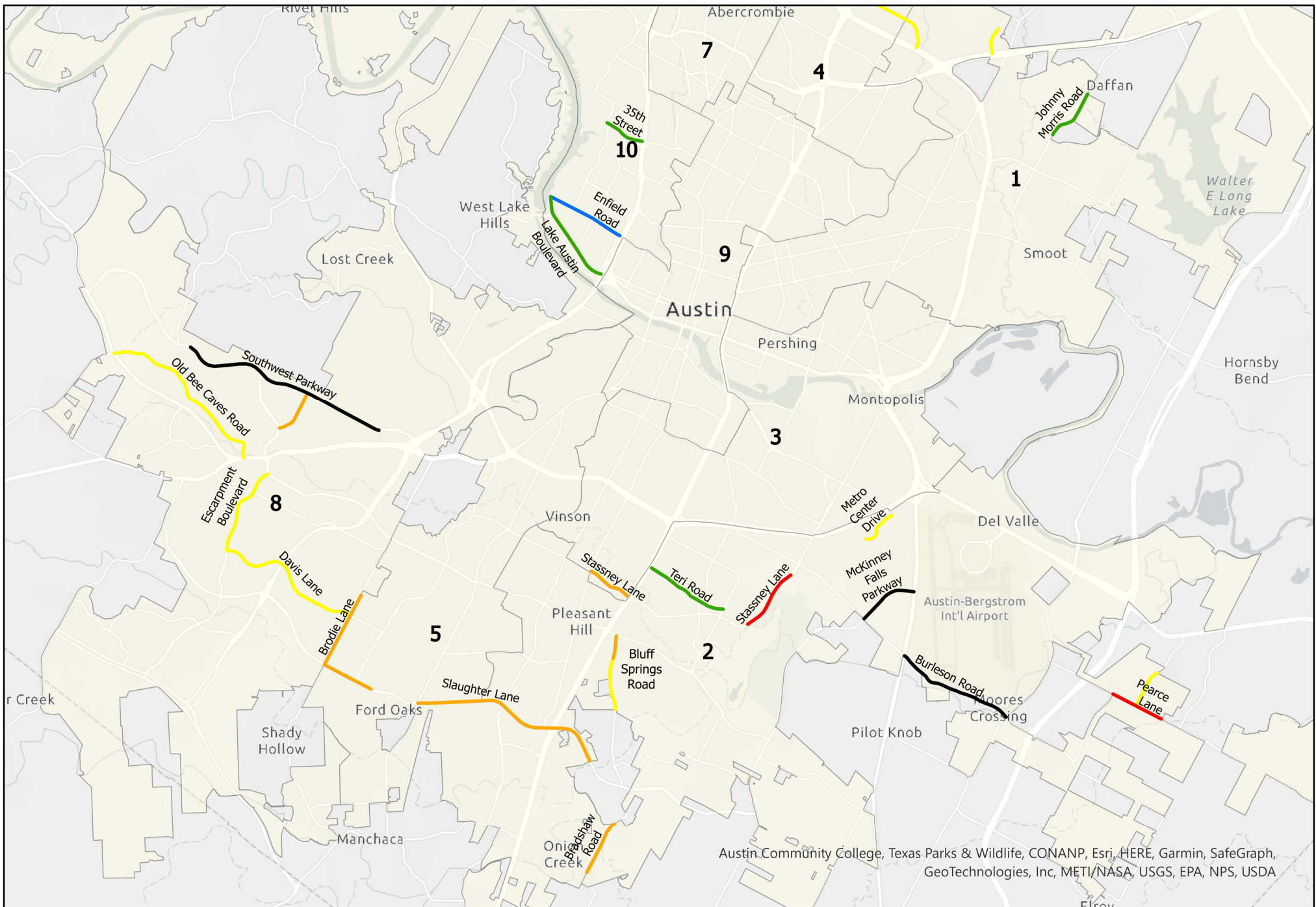




Map data provided by Esri, HERE, Garmin, SafeGraph, GeoTechnologies, Inc, METI/NASA, USGS, EPA, NPS, USDA

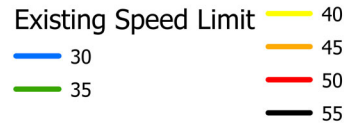
Difference in Speed Limits (MPH), Non-Urban Core Arterials, North Austin





Austin Community College, Texas Parks & Wildlife, CONANP, Esri, HERE, Garmin, SafeGraph, GeoTechnologies, Inc, METI/NASA, USGS, EPA, NPS, USDA

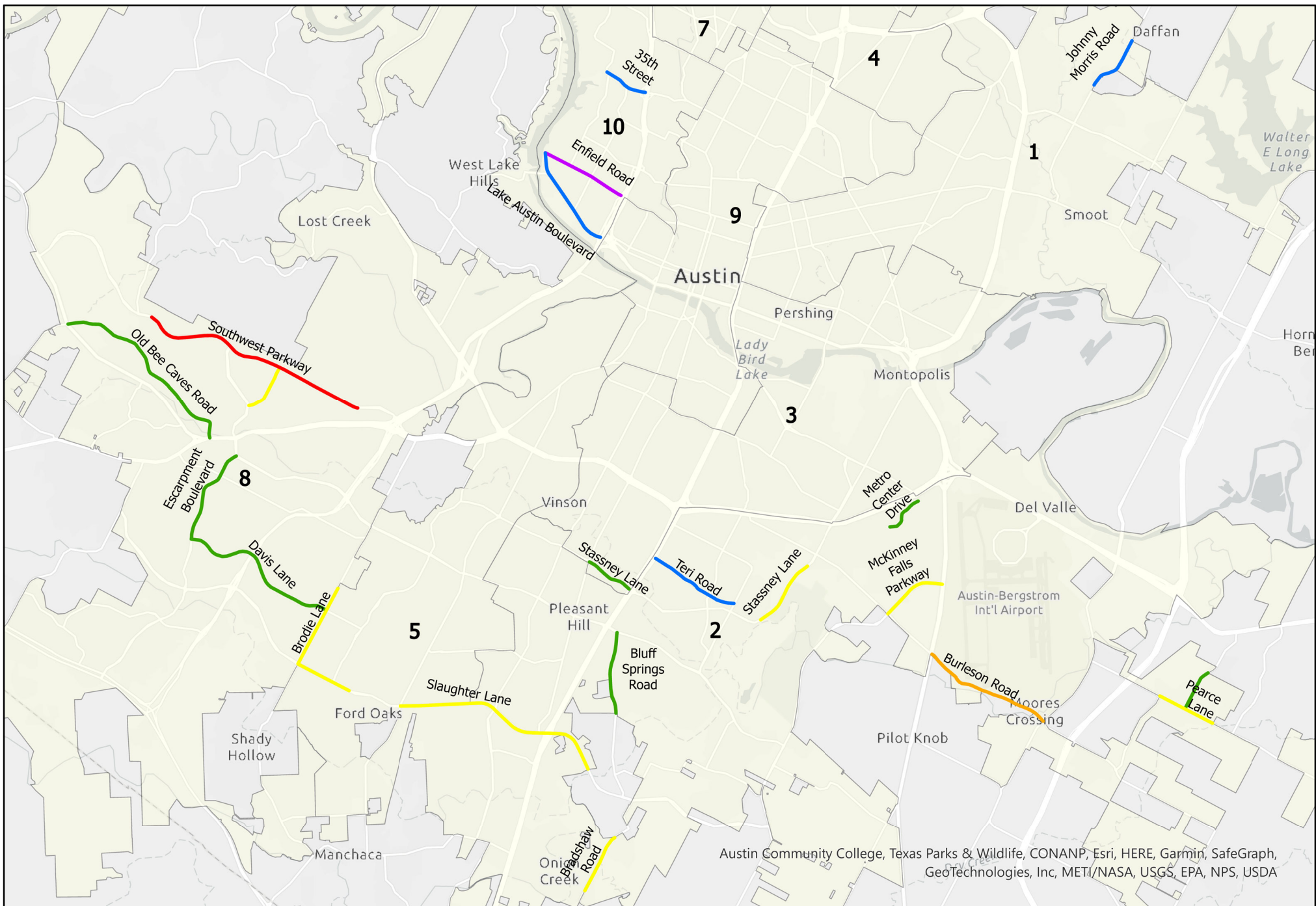
Existing Speed Limits (MPH)  
Non-Urban Core Arterials  
South Austin




City of Austin  
Transportation  
Department, 5/9/2022

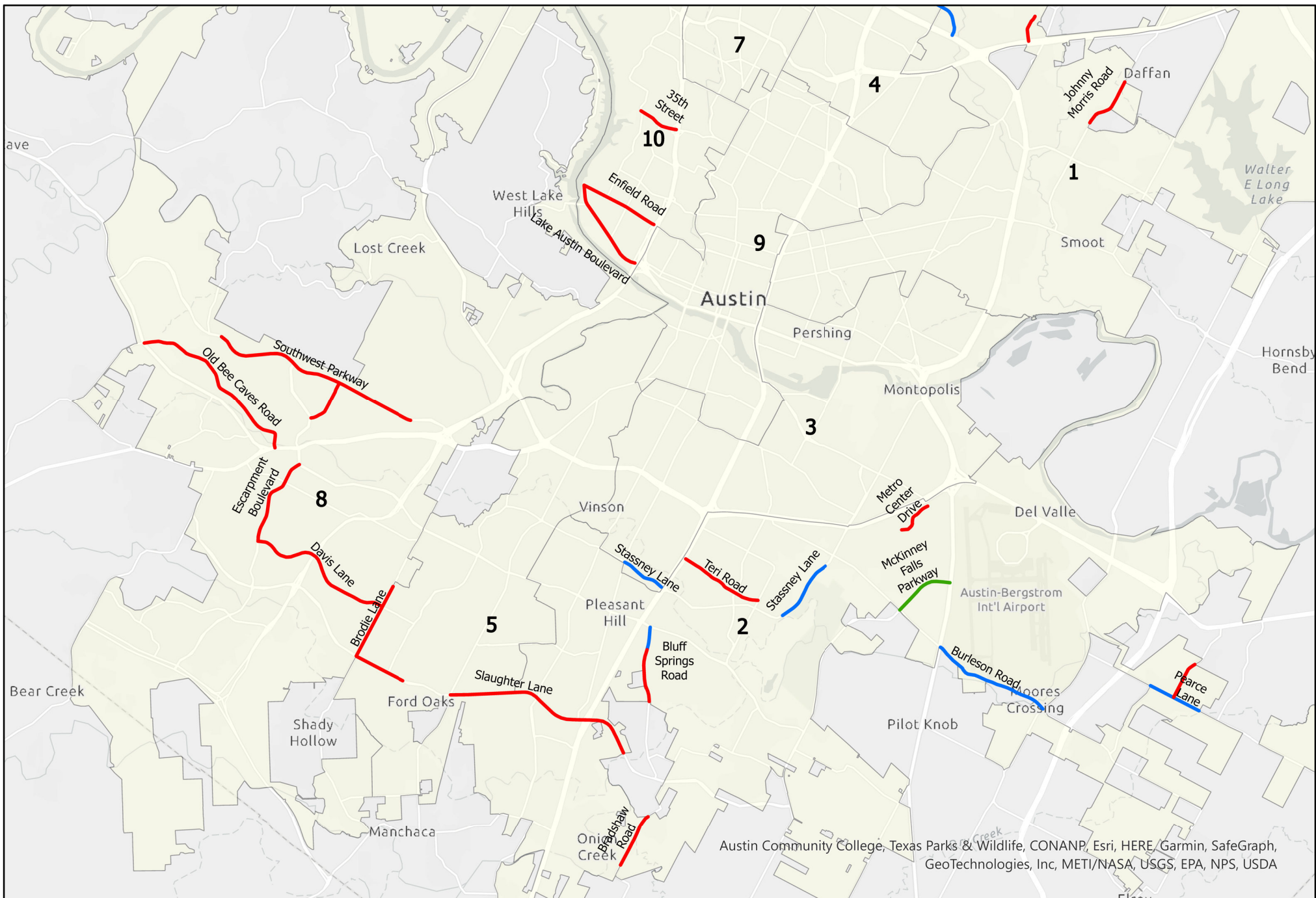






Austin Community College, Texas Parks & Wildlife, CONANP, Esri, HERE, Garmin, SafeGraph, GeoTechnologies, Inc, METI/NASA, USGS, EPA, NPS, USDA

<p><b>Proposed Speed Limits (MPH). Non-Urban Core Arterials, South Austin</b></p>	<p>N</p> <p>0 1 2 Miles</p>	<p><b>Polylines</b></p> <p>Recommended Speed Limit</p> <ul style="list-style-type: none"> <li>25</li> <li>30</li> <li>35</li> <li>40</li> <li>45</li> <li>50</li> </ul>	<p>City of Austin Transportation Department, 5/9/2022</p> 
---	-----------------------------	---	---



Austin Community College, Texas Parks & Wildlife, CONANP, Esri, HERE, Garmin, SafeGraph, GeoTechnologies, Inc, METI/NASA, USGS, EPA, NPS, USDA

Difference in Speed Limits  
(MPH), Non-Urban Core  
Arterials, South Austin



City of Austin  
Transportation  
Department, 5/9/2022

