



Homeless Strategy Division Update City Council Work Session

June 7th, 2022

DIANNA GREY

HOMELESS STRATEGY DIVISION



Briefing Topics

- Finding Home ATX
- American Rescue Plan Act - Homelessness
- Homeless Encampment Management
- HEAL Initiative

Finding Home ATX

Investment Plan

A view of the outcomes and investments by category

Spending by Category ¹	People Served or Housing Units				Funding Needs			
	Year 1	Year 2	Year 3	Totals	Year 1	Year 2	Year 3	Totals (\$)
PROGRAMMATIC EXPENDITURES	1,008	2,203	2,089	5,300	\$38M	\$75M	\$105M	\$218M
1. Crises Services (HH Stabilized) ²	110	220	330	660	\$9M	\$7M	\$7M	\$23M
2. Core Housing Programs (HH Stabilized) ²	898	1,983	1,759	4,640	\$20M	\$63M	\$94M	\$178M
3. Other Services ³	TBD	TBD	TBD	TBD	\$8M	\$6M	\$4M	\$18M
SYSTEM INFRASTRUCTURE								
4. System Capacity Building	N/A	N/A	N/A	N/A	\$7M	\$7M	\$6M	\$20M
CAPITAL INVESTMENTS								
5. Capital Investment (Housing Units)	-	700	600	1300	\$140M	\$126M	-	\$266M
CONTINGENCY								
6. Contingency	N/A	N/A	N/A	N/A	\$2M	\$4M	\$4M	\$10M
TOTALS					\$187M	\$213M	\$115M	\$515M

¹ Figures may not add up exactly due to rounding.

² Unduplicated individuals

³ Includes mental health, employment services, and benefits access

Finding Home ATX

Funding Status

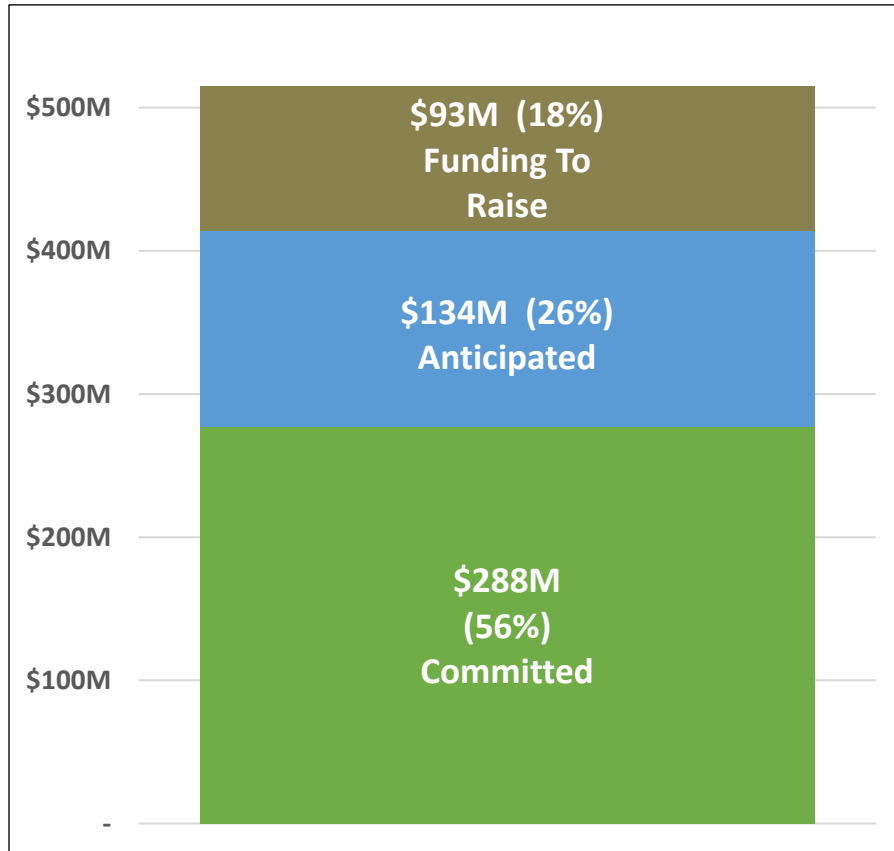


Figure 1: Finding Home ATX
Funding Status as of 4/30/2022

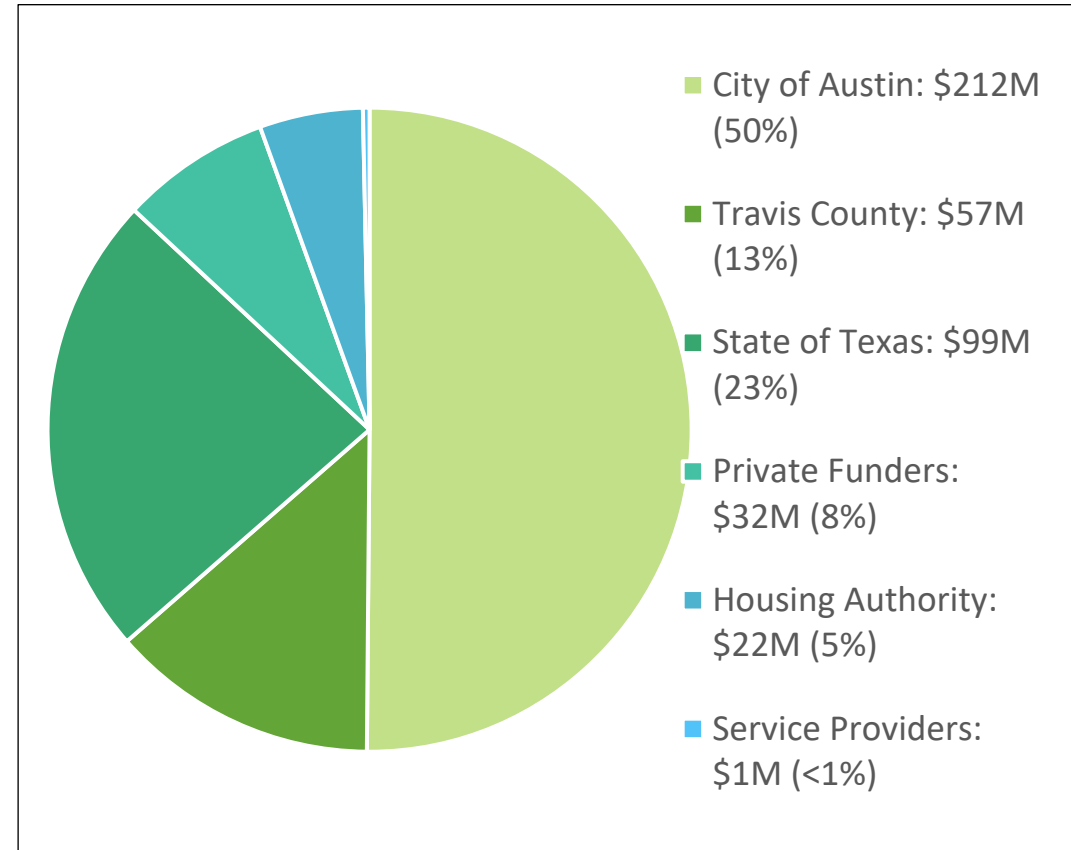
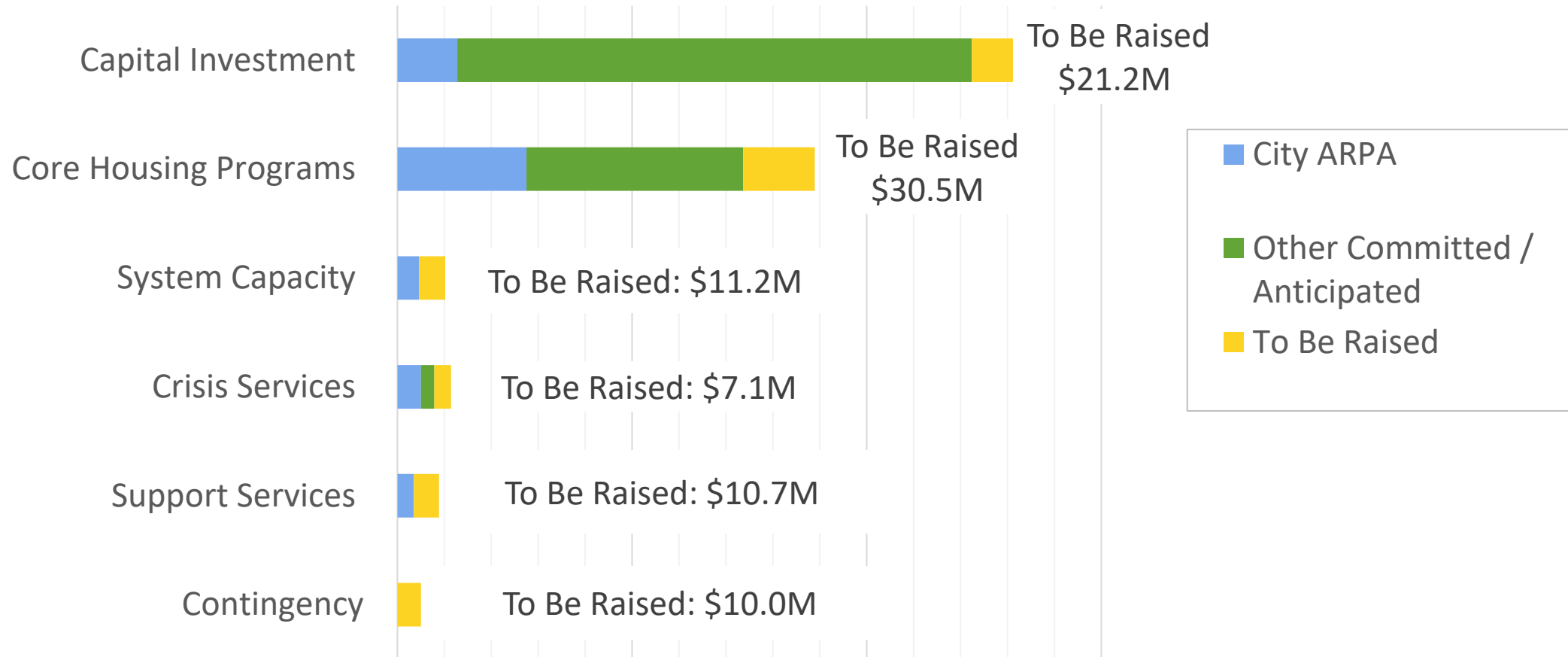


Figure 2: Finding Home ATX
Committed and Anticipated Funding Sources 4/30/2022

Finding Home ATX

Funding Progress by Category



American Rescue Plan Act

Spending Framework for Finding Home ATX

Proposed CoA ARPA Allocation for the Summit	
Funding Category	CoA ARPA Allocation (3 YR)
Programmatic Expenses	\$72.0M
1. Crises Services	\$10.0M
2. Core Housing Programs	\$55.0M
3. Other Services	\$7.0M
System Investments	\$9.2M
4. Capacity Building	\$9.2M
Capital Investments	\$25.5M
5. Capital Investment	\$25.5M
Totals	\$106.7M

APH Request for Proposals for Homeless Services

Solicitation Schedule

Solicitation Schedule	Phase #1	Phase #2	Phase #3
Focus Area	Housing Stabilization	Crisis Response	Supportive Services
Project Types	<ul style="list-style-type: none"> • Permanent Supportive Housing • Rapid Rehousing • Supportive Services 	<ul style="list-style-type: none"> • Emergency Shelter • Street Outreach • Day Resource Center • Medical Respite care support services • Youth Crisis Response Services 	<ul style="list-style-type: none"> • Employment Services • Behavioral Health • Benefits Access
Solicitation Amount (Combined Funds)	~\$53M	~\$9.9M	~\$7.5M
Timeline	Released: January 31, 2022 Closed: March 9, 2022 Awardees notified: June 2022	Released: March 31, 2022 Closed: May 12, 2022 Awardees notified: July 2022	Released: May 31, 2022 Closes: July 7, 2022 Awardees notified: August 2022

Small Grants Program – Capacity Building

Homeless Strategy Division & Innovation Office

- Total Amount: \$1,000,000
- Goal: To help nonprofit service providers
 - A. effectively expand services and deepen impact;
 - B. improve equitable access & outcomes across services;
 - C. support the integration and elevation of minority-led, smaller, and newer organizations into the Homelessness Response System (HRS) and build pathways for these organizations to access government funding; and
 - D. increase cultural competency of service provision throughout the HRS.
- Elements
 - A. Capacity Assessment (\$2500 compensation)
 - B. Capacity Accelerator/Technical Assistance
 - C. Small Grants: Up to \$37,500
- Applications Due: June 16th, 2022

Homeless Encampment Management

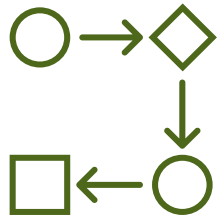
Enforcement of Camping Regulations

- Most requests to move are met with voluntary compliance
- 252 citations or individual enforcement actions (5/31/2022)
- Compared to HEAL Initiative:
 - *Limited ability to connect individuals to shelter and service resources*
 - *Significant displacement to other areas*

Homeless Encampment Management

Process Improvement

FSD Performance Management

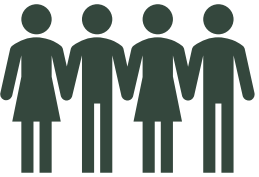


Process

- Central Response Structure
- Coordinated Prioritization and Resource Deployment
- Communication Plan
- Standardized Protocol

Complete
Underway

Underway by Partner Teams
Underway



People

- Central Hub For Staff Resources
- Increased Staff Training

Underway
Underway in Partner Teams



Tech

- System for Tracking Camps, Prioritization, Resources, and Response

Underway

Homeless Encampment Management Process Improvement

Participating Departments

Austin Code

Austin Energy

Austin Fire

Austin Police

Homeless Strategy Division, APH

Austin Public Library

Austin Resource Recovery

Austin Transportation

Austin Water

Communications and Public Information Office

Communications and Technology Management

Downtown Austin Community Court

Emergency Medical Services

Financial Services - Performance

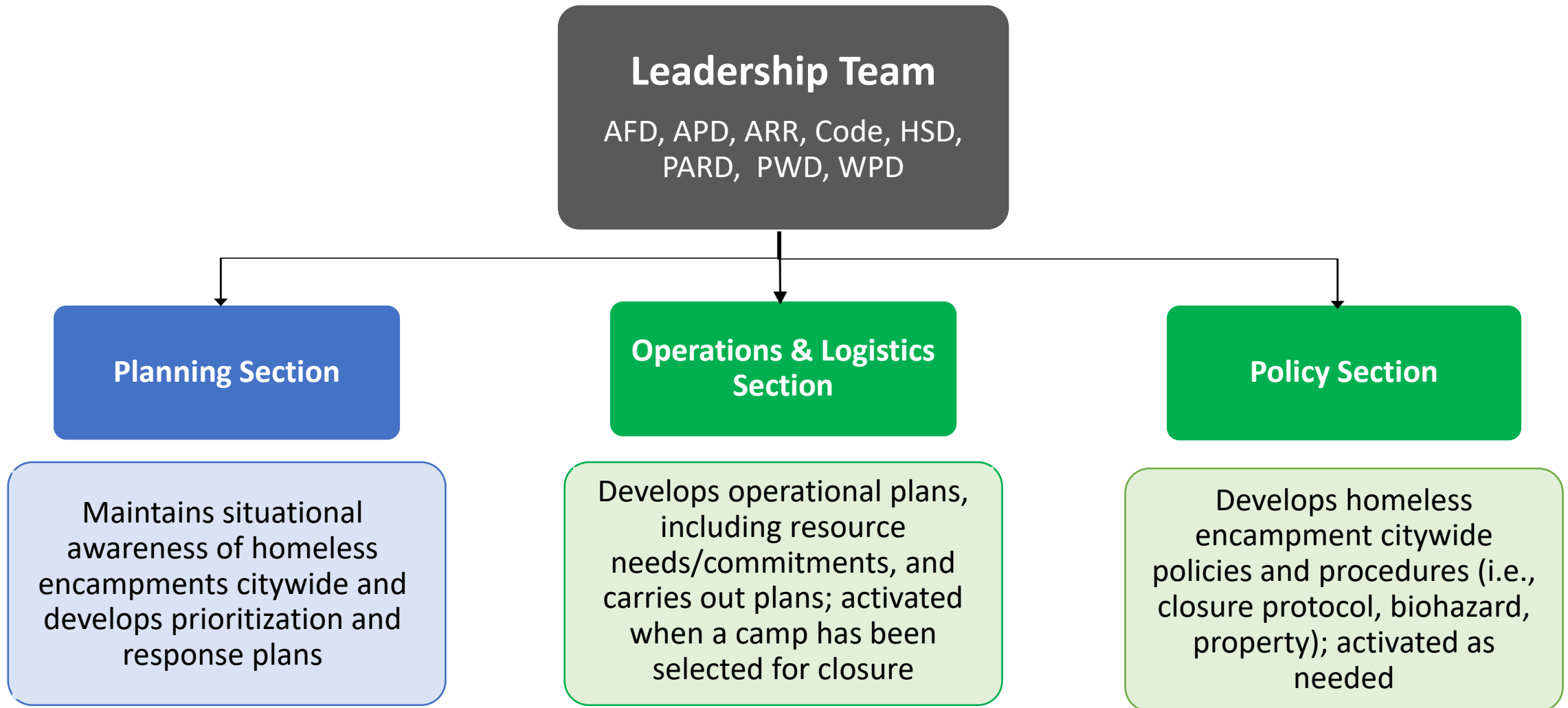
Law

Parks and Recreation

Public Works

Watershed Protection

Homeless Encampment Management Central Response Structure



Homeless Encampment Management Prioritization Tool

Purpose:

- Action is prioritized and resources deployed to encampments that present highest health/safety risks, as well as barriers to access to public amenities
- Supports consistent data capture across departments and encampments citywide
- Improves understanding of needs, risks, and trends across encampments citywide

Progress:

- Modeled using the HEAL Prioritization tool
- Single tool can meet both prioritization for closure with and without HEAL
- Field testing underway

Next Steps:

- Estimated full implementation in early July

HEAL Initiative

Housing-Focused Encampment Assistance Link

Shelter Transfers, Inception to Date:	267
Shelter Transfers, Fiscal Year to Date:	119
Fiscal Year 2022 Goal	200
Shelter Acceptance Rate:	93%
Bridge Shelter Occupancy (5/17)	123
Housed to Date	79
% African American	45% (PEH: 37%)
% Hispanic/Latino	15% (PEH: 26%)
Male	67.3% Male (PEH 61.6%)
Female	32.6% Female (PEH 37.7%)

HEAL Encampments

1. *Terrazas Branch Library*
2. *Menchaca/Ben White*
3. *183/Oak Knoll*
4. *Lady Bird Lake/Buford Tower*
5. *Old San Antonio Road/Slaughter Creek*
6. *IH-35 Frontage Road/St. Johns Avenue*
7. *West Bouldin Creek*
8. *St. John Neighborhood Park*
9. *Gillis Park*

HEAL Initiative: Potential Bridge Shelter Expansion

Financial Services Department - Real Estate Services

Market Conditions in the Hospitality Sector

- The return of group and individual business travelers results in a +12% increase in occupancy rates.
- Increased strengthening of all segments of demand is anticipated to increase the Average Daily Rate (ADR) by almost 17%.
- The increase in ADR is expected to drive 2022 Revenue Per Available Rooms (RevPAR) above 2019 levels.

Discussion
