

ORDINANCE NO. 20220609-054

AN ORDINANCE AMENDING CITY CODE SECTION 12-4-64(D) (*TABLE OF SPEED LIMITS*) TO ESTABLISH A PRIMA FACIE SPEED LIMIT OF 30 MILES PER HOUR FOR ESCARPMENT BOULEVARD FROM PADUA DRIVE TO BERNIA DRIVE.

BE IT ORDAINED BY THE CITY COUNCIL OF THE CITY OF AUSTIN:

PART 1. City Code Section 12-4-64(D) (*Table of Speed Limits*) is amended to delete:

Escarpment Boulevard from SH 45 to its terminus south of SH 45. (35MPH)

PART 2. City Code Section 12-4-64(D) (*Table of Speed Limits*) is amended to add:

Escarpment Boulevard from SH 45 to Padua Drive. (35 MPH)

PART 3. The amendments made in this ordinance are based on the results of a traffic engineering investigation, or “speed study,” referenced in the Memorandum attached as Exhibit “A.”

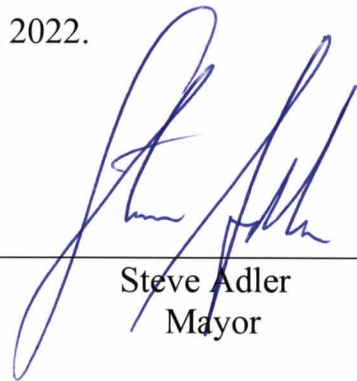
PART 4. The amendments made in this ordinance shall be incorporated in alphabetical order and the existing entries reordered accordingly.

PART 5. This ordinance takes effect on June 20, 2022.

PASSED AND APPROVED

_____, June 9, 2022

§
§
§



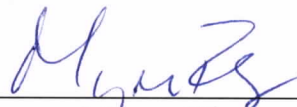
Steve Adler
Mayor

APPROVED:



Anne L. Morgan
City Attorney

ATTEST:



Myrna Rios
City Clerk

EXHIBIT A



MEMORANDUM



To: Traffic Study Files

From: Alison Mills, P.E., South Austin Engineer
Traffic Engineering Division
Austin Transportation Department

Date: April 18, 2022

Subject: SPEED ZONE INVESTIGATION

Location: Escarpment Blvd – Padua Drive to Bernia Drive

Date(s) of Previous Investigation: None

A Traffic Engineering Investigation has been conducted by the Transportation Engineering Division to determine the appropriate speed limit on Escarpment Boulevard from Padua Drive to Bernia Drive. Currently the speed limit from Padua Drive to Bernia Drive is 35 MPH. Figure 1 represents a map of the study area.

Location Conditions:

Escarpment Blvd from Padua Drive to Bernia Drive is an undivided, two-way, two-lane, residential collector roadway, with an existing 35 MPH speed limit. See Table 1 for more information on the segment studied. Figure 1 represents the map of the street segment studied.

Table 1: Location Information

Street Segment:	Segment Length (Miles)	Number of Unsignalized Access Points	Number of Signalized Intersections	Width (ft)
From Padua Drive to Bernia Drive	0.5	7	0	32

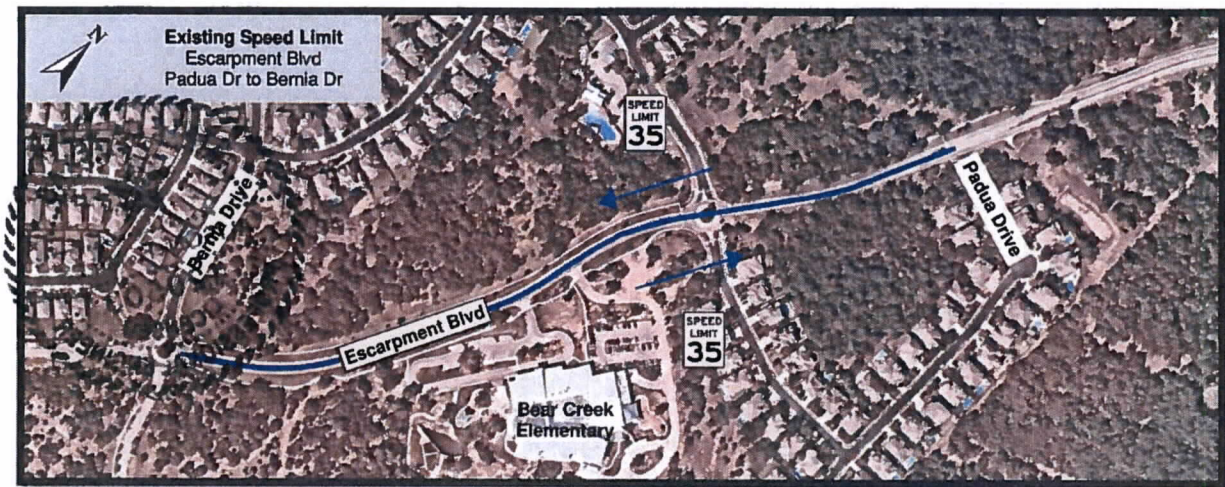


Figure 1: Study Area Aerial View with Existing Speed Limits

Speed and Volume Data:

A speed study was conducted in accordance with the Texas Procedures for Establishing Speed Zones. Speed and volume data were collected in April 2022 to determine the appropriate posted speed limit for Escarpment Boulevard. In 2020, 2,288 vehicles per day were recorded on Escarpment Boulevard from Padua Drive to Bernia Drive.

As summarized in Table 2, the 85th percentile speed on the eastbound and westbound lanes was recorded in the range of 34 mph to 36 mph. The average 85th percentile speed on Escarpment Boulevard was recorded at 35 mph for the eastbound and westbound lanes of traffic.

Table 2: Speed and Volume Data Escarpment Blvd

Block Numbers	Street Segment	Existing Speed Limit	85% Speed		50% Speed		Traffic Volume AADT
			NB	SB	NB	SB	
12600 - 13401	Padua Drive to Bernia Drive	35	40.0	39.6	34.2	35.0	2288

General Comments:

Texas' Procedures for Establishing Speed Zones provides the information and procedures necessary for establishing speed zones and advisory speeds on the state highway system. Per these procedures speed limits can be reduced to 10 mph below the 85th percentile speed based on the additional roadway features listed below:

- A. Narrow roadway pavement widths (20 feet or less, for example)
- B. Horizontal and vertical curves (possible limited sight distance)
- C. Hidden driveways and other developments (possible limited sight distance)

- D. High driveway density (the higher the number of driveways, the higher the potential for encountering entering and turning vehicles)
- E. Crash history along the location
- F. Rural residential or developed areas (higher potential for pedestrian and bicycle traffic)
- G. Lack of striped, improved shoulders (constricted lateral movement).

Escarpment Boulevard from Padua Drive to Bernia Drive is a newly developed residential street with high pedestrian traffic due to the nearby school, Bear Creek Elementary. The roadway segment also has unstriped shoulders. It is the conclusion of the engineer that this roadway meets the characteristics of features 'F' and 'G' above and should therefore receive a speed limit within 10 mph below the 85th percentile speed. The recommendations for speed limits along this segment are shown in Table 4 and Figure 5.

Table 4: USLIMITS2 Speed Zoning Report Results

Street Segment	Existing Speed Limit (NB & SB)	Engineer Recommended Speed Limit (NB & SB)	Recommended Speed Limit (NB & SB)
From Padua Drive to Bernia Drive	35mph	30mph	30mph



Figure 5: Proposed Speed Limit Along Escarpment Blvd from Padua Dr to Bernia Dr

Based on the analysis of this information, it is my engineering judgement that the speed limit on Escarpment Boulevard from Padua Drive to Bernia Drive should be 30 miles per hour in both directions of travel.