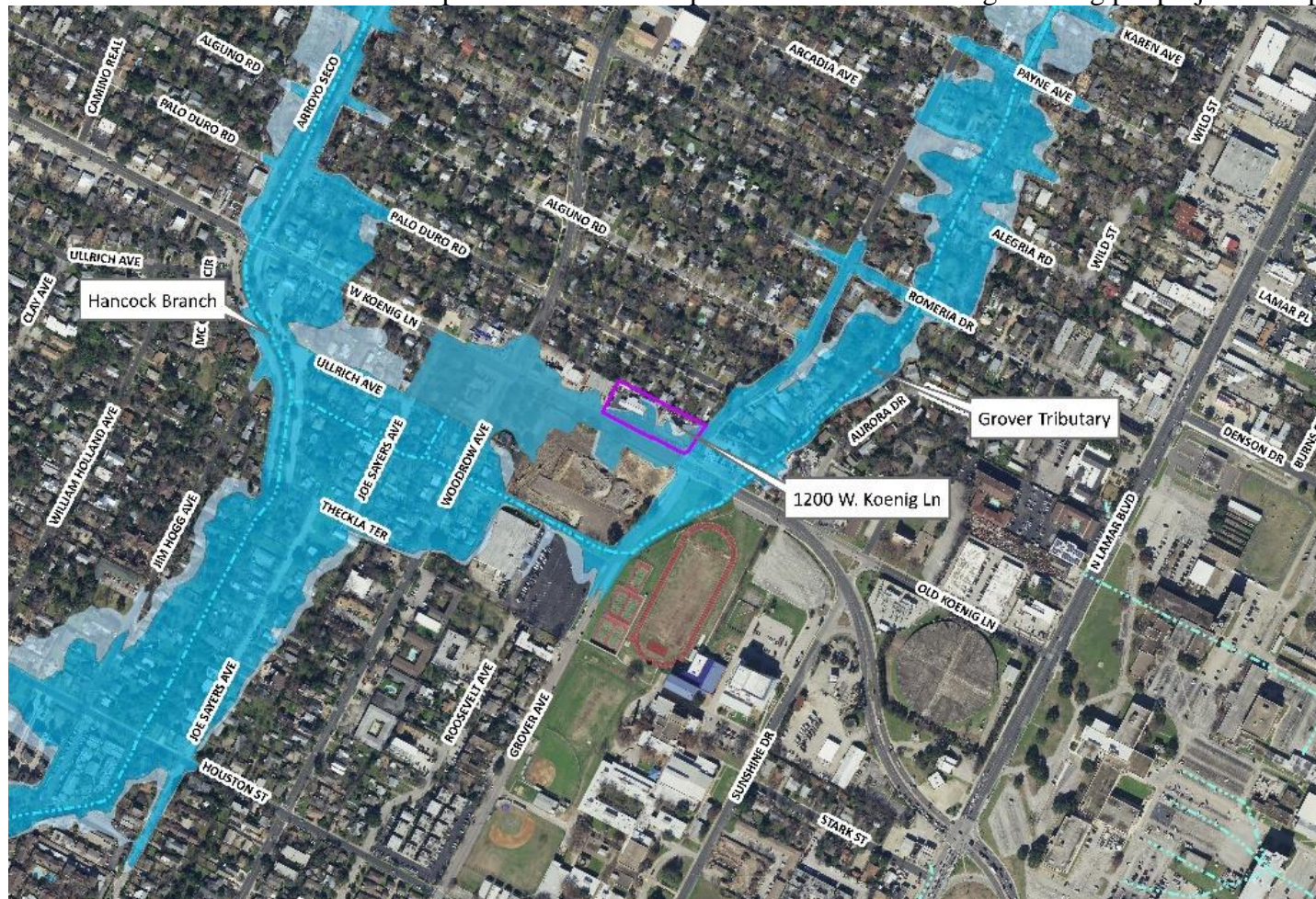


Backup Information Packet

Concerning a public hearing and consideration of an ordinance authorizing floodplain variances to construct a multifamily development located at 1200 W. Koenig Lane, which encroaches in the 25-year and 100-year floodplains for Grover Tributary of Shoal Creek.

Site Location Map with Current Floodplains for 1200 W Koenig showing pre project floodplain



1200 W. Koenig Lane Existing Condition Site Map

- Existing_Site
- 25-Year Floodplain
- 100-Year Floodplain
- Creek Centerlines



This product is for informational purposes only and may not have been prepared for or be suitable for legal, engineering, or surveying purposes. It does not represent an on-the-ground survey and represents only the approximate relative location of property boundaries.

This product has been produced by the Watershed Protection Department for the sole purpose of geographic reference. No warranty is made by the City of Austin regarding specific accuracy or completeness.

Zoomed-in Site Location Map for 1200 W Koenig showing post project floodplain

