

**Public Hearing  
CITY OF AUSTIN  
RECOMMENDATION FOR COUNCIL ACTION**

**AGENDA ITEM NO.: 49  
AGENDA DATE: Thu 03/03/2005  
PAGE: 1 of 2**

**SUBJECT:** Set a public hearing to approve using approximately 1.265 acres for a wastewater line, 0.245 acres for a lift station, and 2.618 acres for temporary work space to construct, use, maintain, repair, and replace a wastewater line in a tunnel for construction of the Barton Creek Lift Station Relief Main-Section 2 through dedicated parkland known as Butler Shores Park in accordance with Sec. 26.001 et seq. of the Texas Parks and Wildlife Code. (Suggested date and time: April 7, 2005 at 6:00 p.m. City Hall Council Chambers)

**AMOUNT & SOURCE OF FUNDING:** All costs associated with the construction, as well as any parkland mitigation and restoration, will be paid by the requestor.

**FISCAL NOTE:** There is no unanticipated fiscal impact. A fiscal note is not required.

**REQUESTING     Public Works  
DEPARTMENT:**

**DIRECTOR'S  
AUTHORIZATION:** Sondra Creighton

**FOR MORE INFORMATION CONTACT:** Junie Plummer, 974-7085; Laura Bohl, 974-7064

**PRIOR COUNCIL ACTION:** Land Use Agreement July 29, 2004, for easements in Zilker Park.

**BOARD AND COMMISSION ACTION:** Recommended by Parks Board.

**PURCHASING:** N/A

**MBE / WBE:** N/A

---

Chapter 26 of the Parks and Wildlife Code provides that the use of parkland for non-park purposes may be approved upon a finding that there is no feasible and prudent alternative to the use of this land.

The use of land in Zilker Park for wastewater line to allow decommissioning the existing Barton Creek Lift Station was approved at a public hearing on July 29, 2004. This approval included land for a lift station site in Town Lake Park. After completing final engineering, and in response to concerns raised by the Town Lake Park stakeholders, a new location has been requested in Butler Shores Park for the wastewater line and temporary lift station.

A new location for the lift station, in Butler Shores Park, eliminates the lift station in the Barton Springs Pool parking lot. The Barton Creek Lift Station Relief Tunnel project consists of two tunnel sections. Tunnel Section 1 relief main will be a tunnel from a construction shaft north of Barton Springs Road to the 32-inch Barton Creek Interceptor. Tunnel Section 2 is a deeper tunnel that is downstream of Tunnel Section 1 and will extend from a shaft in Zilker Park to a shaft and temporary lift station to be located in Butler Shores Park.

Approval of the use of the parkland is recommended, subject to the following mitigation for use of parkland: (1) construction of a new maintenance barn in accordance with the City's Standard

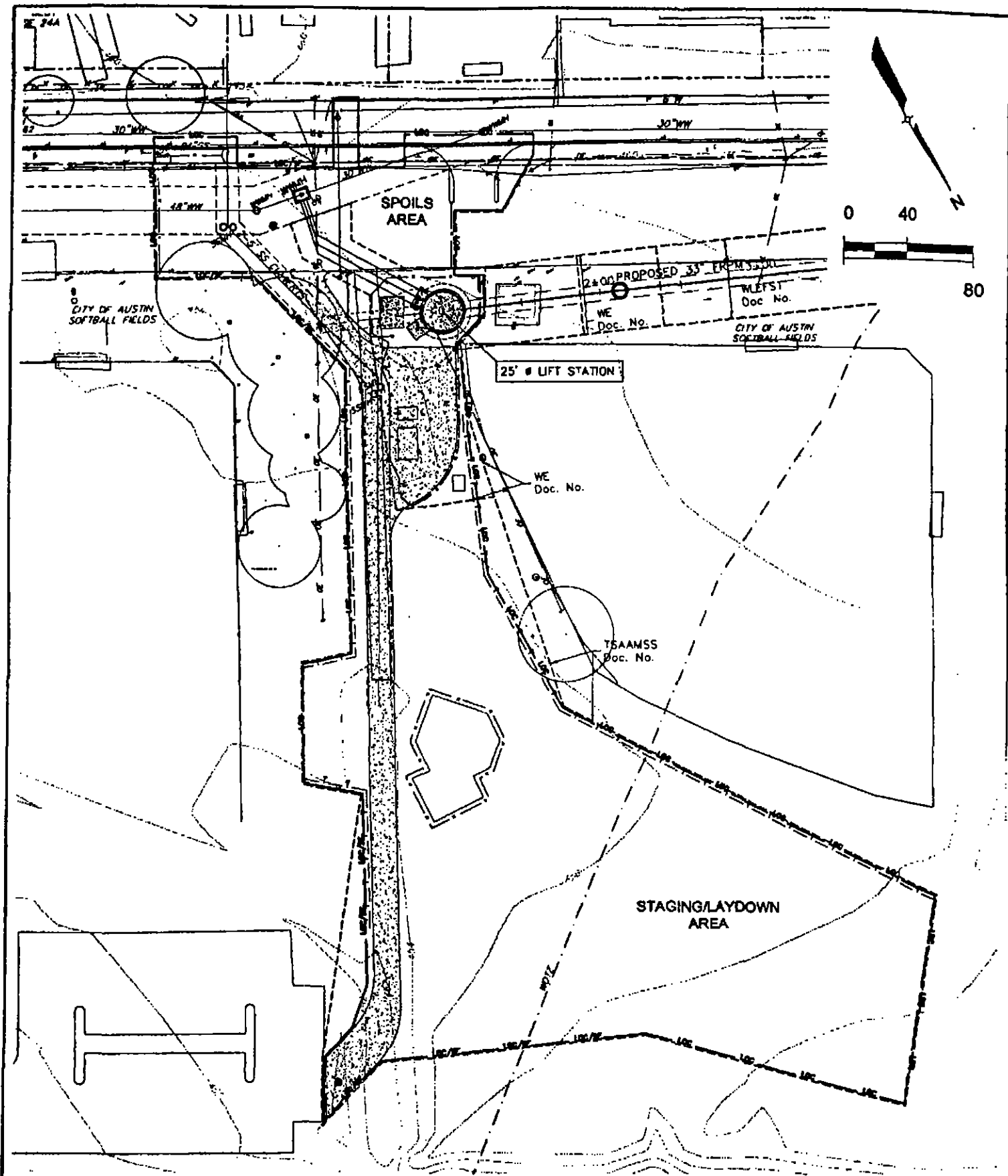
**Public Hearing  
CITY OF AUSTIN  
RECOMMENDATION FOR COUNCIL ACTION**

**AGENDA ITEM NO.: 49  
AGENDA DATE: Thu 03/03/2005  
PAGE: 2 of 2**

Specifications and Construction Standards; and (2) all parkland restoration is completed in accordance with PARD's "Construction I Parks Specifications". The requestor, Austin Clean Water Program-on behalf of the Austin Water Utility and the Public Works Department, will pay all costs associated with project construction, and construction of the new maintenance barn and all parkland restoration.

There is no feasible and prudent alternative to the use of the dedicated parkland, which includes all reasonable planning to minimize harm to such lands. The dates of public notification in the Austin American-Statesman are March 13, March 20, and March 27, 2005.





**Espey Consultants, Inc.**

Environmental & Engineering Services

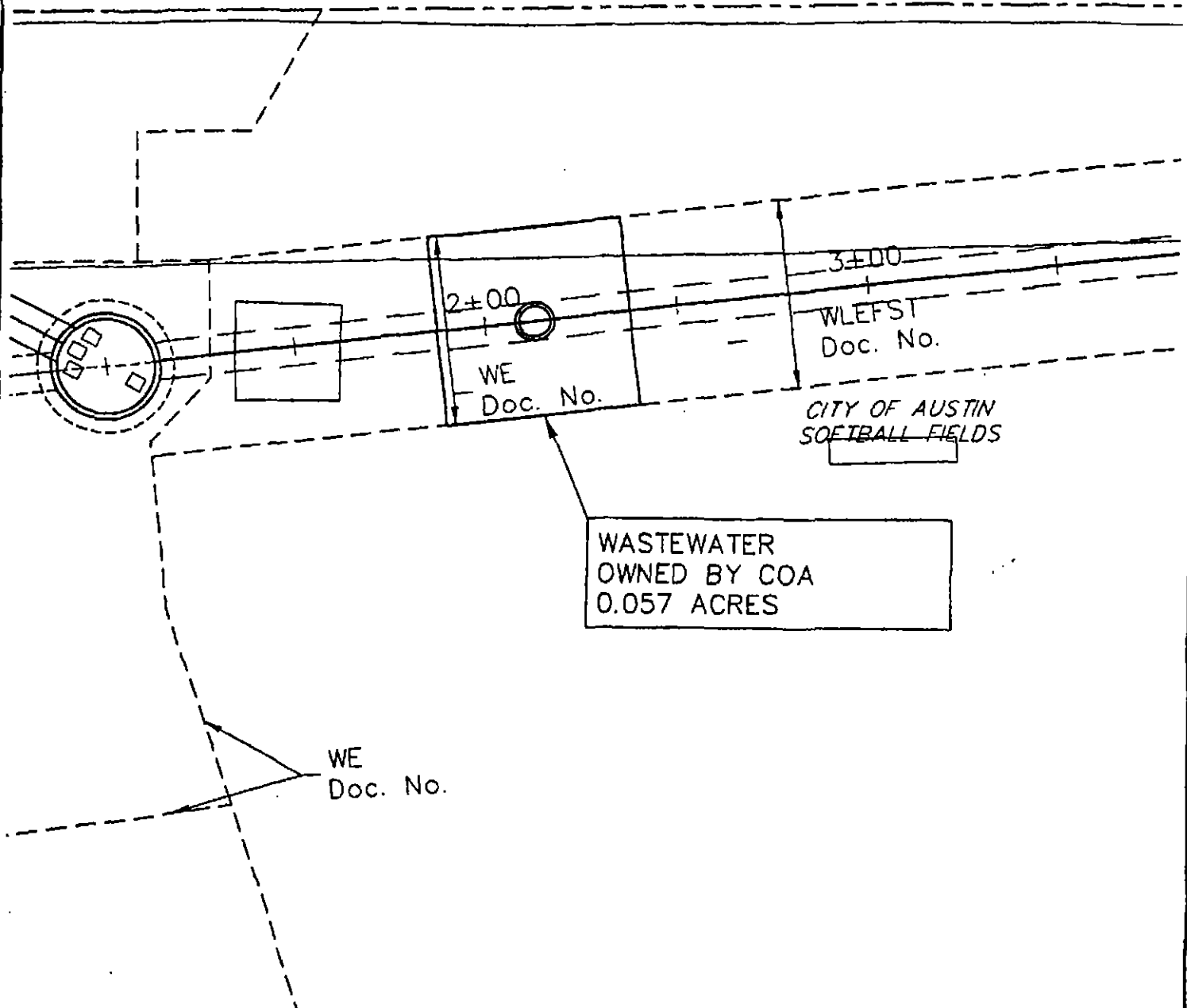
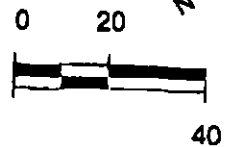
**TOOMEY SITE EXHIBIT  
BARTON CREEK LIFT STATION  
RELIEF TUNNEL - SECTION 2**

FEBRUARY 2005

2003-201

(0.873 AC.)

IAS  
VOLUN



Espey Consultants, Inc.

Environmental & Engineering Services

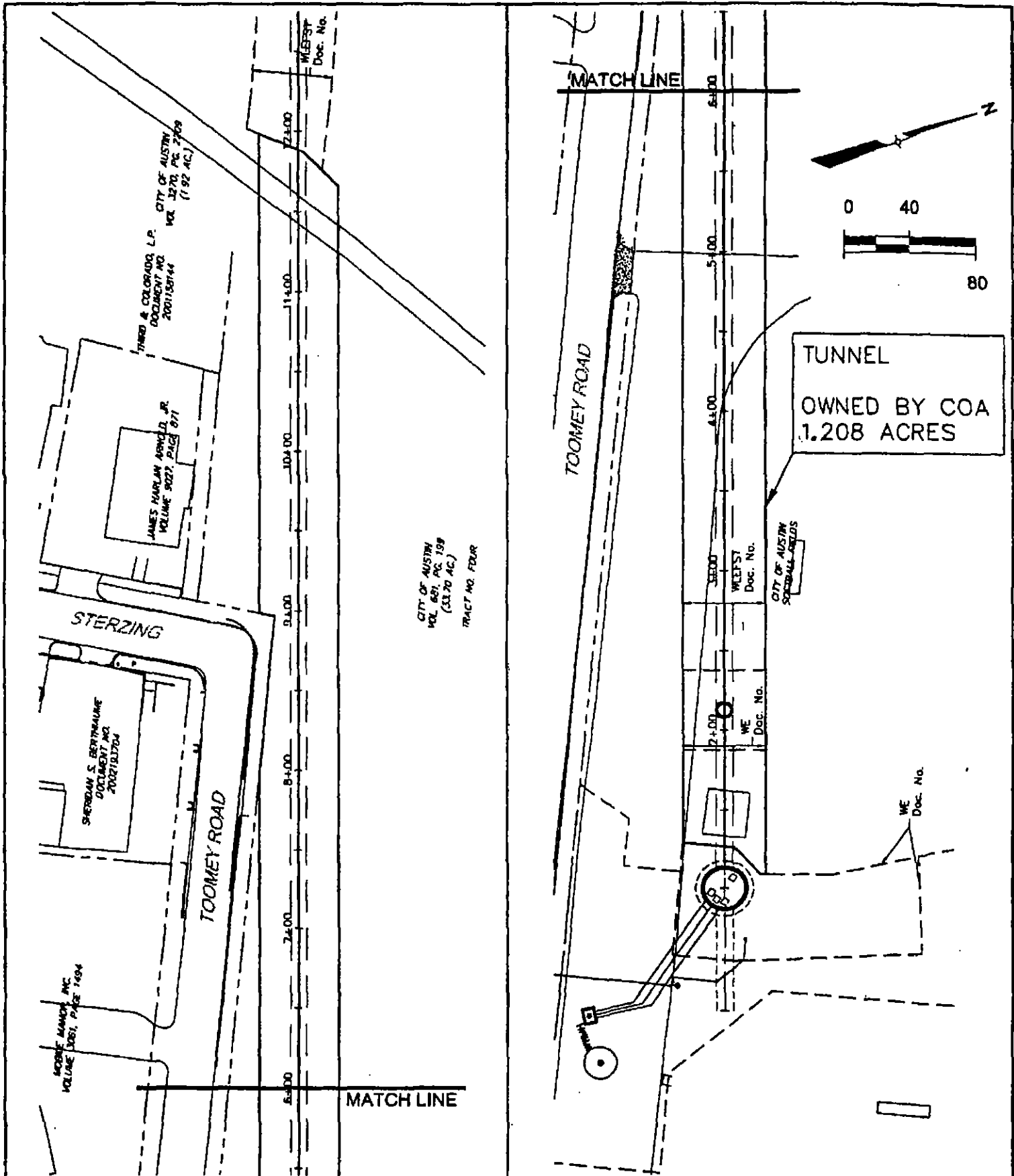
**EASEMENT EXHIBIT**  
BARTON CREEK LIFT STATION  
RELIEF TUNNEL - SECTION 2

FEBRUARY 2005

4 OF 10

2003-201

P:\projects\2003\201 ACWP BCLSR - P15 10400-2003.201\dwg-toomer\jerry\1113-201\plan\1113-201-01.dwg, 11/11/03, 11:11 AM, 11/11/03, 11:11 AM, 11/11/03, 11:11 AM



Espey Consultants, Inc.

Environmental & Engineering Services

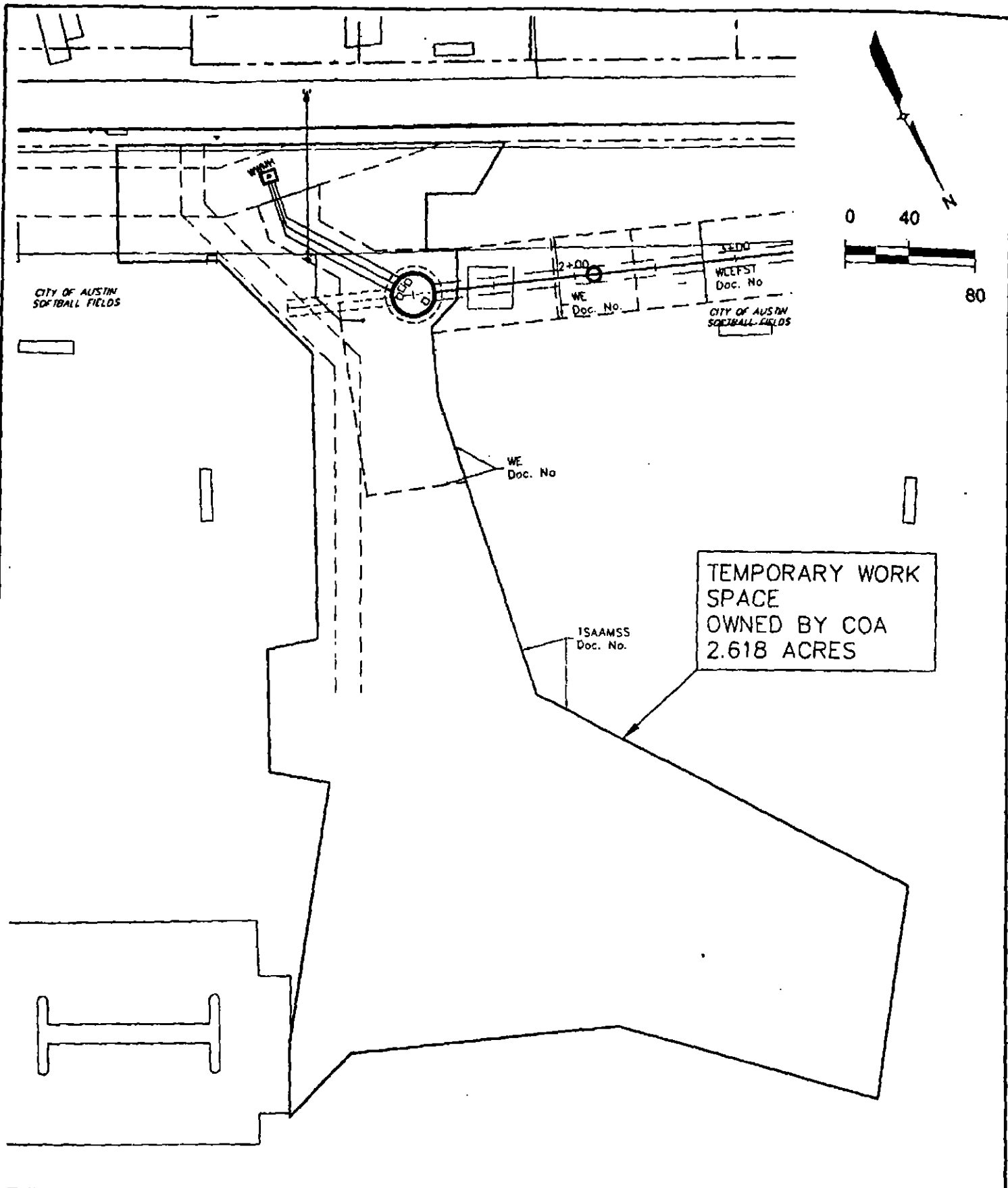
# EASEMENT EXHIBIT BARTON CREEK LIFT STATION RELIEF TUNNEL - SECTION 2

FEBRUARY 2005

3 OF 10

2003-201





**Espey Consultants, Inc.**

Environmental & Engineering Services

**EASEMENT EXHIBIT  
BARTON CREEK LIFT STATION  
RELIEF TUNNEL - SECTION 2**

FEBRUARY 2005

1 OF 10

2003-201