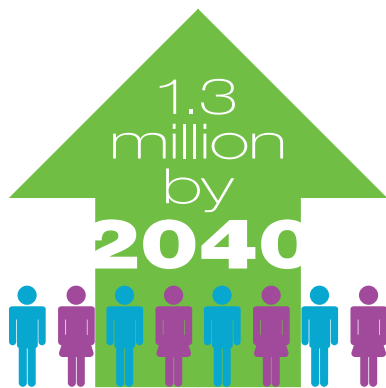


AUSTIN STRATEGIC MOBILITY PLAN



What is the ASMP?

The Austin Strategic Mobility Plan is an important community-driven step to help the city absorb new growth in a balanced way and create true choices among Austin's mobility options.



Why do we need a new plan?

Our current transportation plan, The Austin Metropolitan Area Transportation Plan (AMATP), was adopted in 1995 and needs to be updated to reflect the vision established in Imagine Austin.



Austin was ranked #1 Best Place to live in the US in 2017 (U.S. News and World Report)

What will the ASMP focus on?

- Expanding the Imagine Austin vision into actionable mobility-related goals and objectives.
- Identifying ways to improve efficiencies in our existing system, manage demand, and strategically add capacity in all modes.
- An integrated approach to planning for all modes of our transportation system.
- Improving transportation access and mobility as essential to quality of life for Austin residents.
- Adding performance measures that will track the City's progress and ensure accountability.
- Integrating the technological advances that shape a 21st century transportation vision.



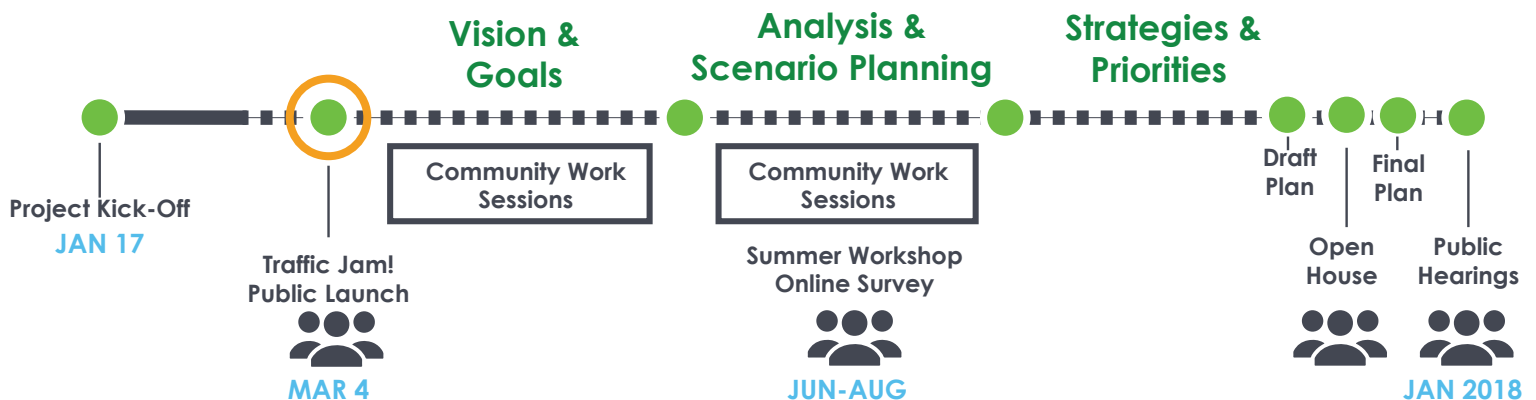
How does this fit with other planning efforts?



The ASMP is part of a much larger puzzle of planning efforts that, when combined, create a comprehensive toolset to implement the full community vision of Imagine Austin.

Since 1998, the City of Austin has engaged with over 61,000 individuals in an effort to shape the City based on community desires. In the past few years alone, over 25,000 residents participated in the Imagine Austin and Mobility Talks initiatives. This information plays a direct role in setting the stage for the priorities and direction of the ASMP.

Public Input Opportunities



Want more information?

Austintexas.gov/asmp
asmp@austintexas.gov
 @AustinMobility (Twitter)
 Facebook.com/AustinMobility (Facebook)

ASMP