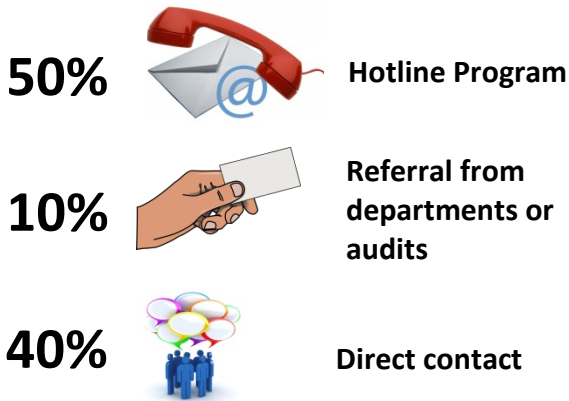


City Auditor's Integrity Unit (CAIU) Activities October 2015 - March 2016

April 2016

WHERE DO ALLEGATIONS COME FROM?

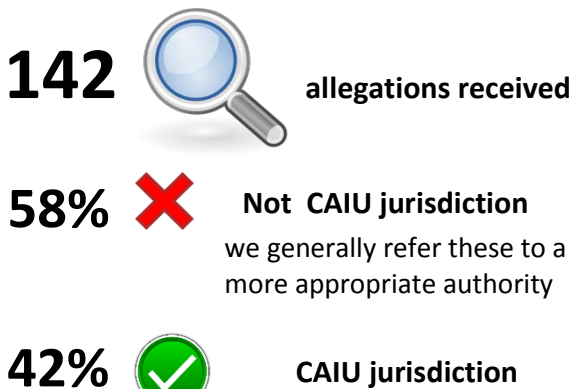


Our hotline program includes a phone hotline and online reporting form. Individuals wishing to remain anonymous may do so for any reporting methods.

WHAT PORTION OF ALLEGATIONS WERE ANONYMOUS?



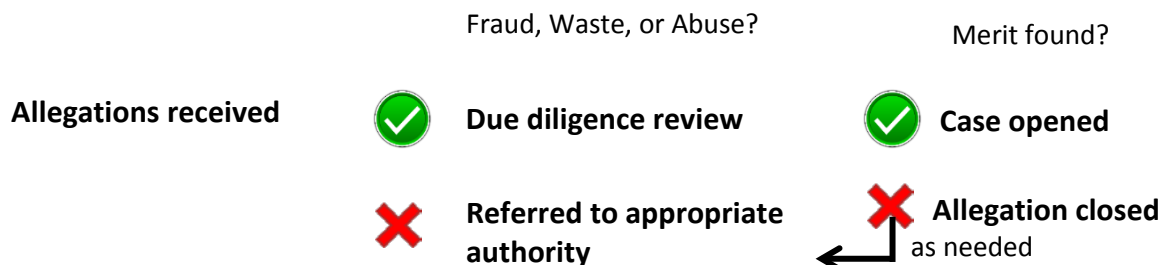
HOW MANY ALLEGATIONS DID CAIU RECEIVE IN THE 1ST HALF OF FY 16?



WHAT TYPES OF ALLEGATIONS DID WE GET OUTSIDE OF CAIU JURISDICTION?



HOW ARE ALLEGATIONS HANDLED?



If merit is found during the due diligence review of the allegations, we open a case.

For opened cases, evidence is collected to prove or disprove the allegation.

HOW MANY ALLEGATIONS BECAME CASES?

16



Cases opened

9



Cases completed



WHAT WERE THE OUTCOMES OF CASES?

Substantiated 3

De minimis 1

Inconclusive 1

Unsubstantiated 4

WHAT REPORTS WERE ISSUED?



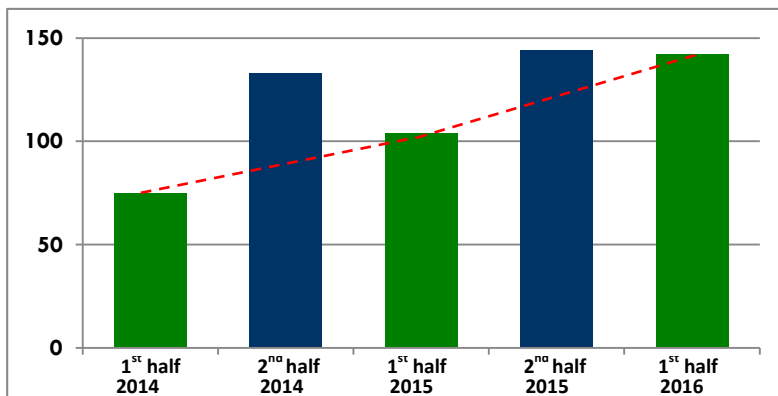
| Department | Violation | Action |
|---|--|------------------------------|
| Development Services* | misuse of position business with direct report | termination (MCSC upheld) |
| Public Works* | misuse of resources business with direct report | suspension & probation |
| Public Works | favor from direct report | written reprimand |
| Development Services & Austin Energy | misuse of resources | pending |
| Parks Department | conflict of interest | pending |

* completed in FY 15, issued in FY 16

WHAT ELSE DID CAIU WORK ON?

1. Changes to the City Code Chapter 2 (functions and duties of the City Auditor and the Ethics Review Commission)
2. Improvements to our case management system in order to track and provide more meaningful information
3. Improvements to our reporting format, including more detailed evidence and inclusion of the subject and departmental responses

WHAT IS THE TREND FOR ALLEGATIONS RECEIVED?



Compared to previous years, we experienced a significant increase in allegations. For example, we experienced an 89% increase from the 1st half of 2014 to the 1st half of 2016.

Historically, the 2nd half of the year has more allegations than the 1st half.