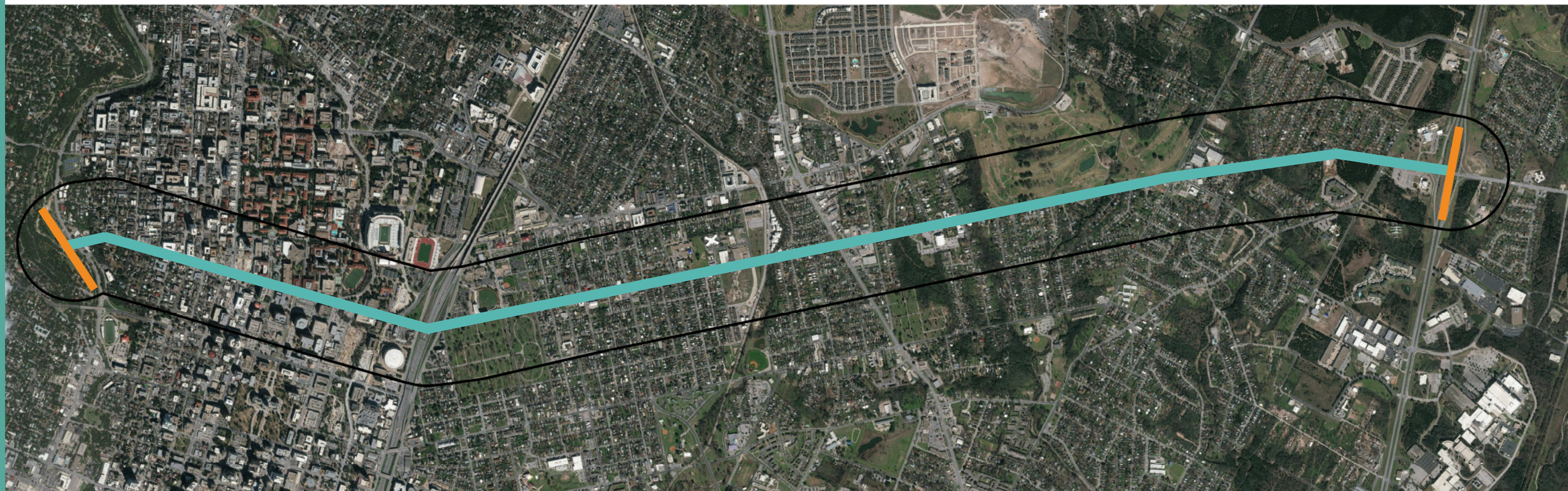


Martin Luther King Jr. Blvd. / FM 969 Corridor Mobility Plan

The City of Austin is developing a Corridor Mobility Plan for Martin Luther King Jr. Boulevard / FM 969 as part of the 2016 Mobility Bond Program. A Corridor Mobility Plan is a preliminary engineering report with recommendations to improve safety, mobility, and connectivity. The limits of the Martin Luther King Jr. Boulevard / FM 969 Corridor Mobility Plan are between North Lamar Boulevard and US 183.

The Martin Luther King Jr. Boulevard Corridor Mobility Plan will identify recommendations to improve travel for people using all modes of transportation—whether you drive, walk, bike or take transit. Public feedback is essential in developing this Corridor Mobility Plan.



@AustinMobility



@AustinTexasGov



/ATXTransportation



AustinTexas.Gov/2016Bond

Martin Luther King Jr. Blvd. / FM 969 Project Timeline

As part of the Martin Luther King Jr. Boulevard / FM 969 Corridor Mobility Plan development, the City of Austin will seek input from the community through two rounds of public engagement. The first portion of public engagement is occurring throughout early 2018. The development of the Corridor Mobility Plan for Martin Luther King Jr. Boulevard / FM 969 launched in Winter 2017, with a goal of concluding by late 2018. Improvements identified in the plan may be funded for design and construction as future funding sources become available.



SPRING 2018

- Gather mobility data, including traffic counts and crash data
- Inform the community about our process
- Collect public input on needs and existing conditions
- First series of public meetings



SUMMER 2018

- Analyze public input
- Develop preliminary recommendations for improvements to be included in the Corridor Mobility Plan



FALL 2018

- Present preliminary recommendations to the public to obtain feedback
- Second series of public meetings



WINTER 2018

- Recommendations for the Corridor Mobility Plan will be internally vetted and finalized
- Recommendations will be shared with stakeholders online and through a variety of other means



@AustinMobility



@AustinTexasGov

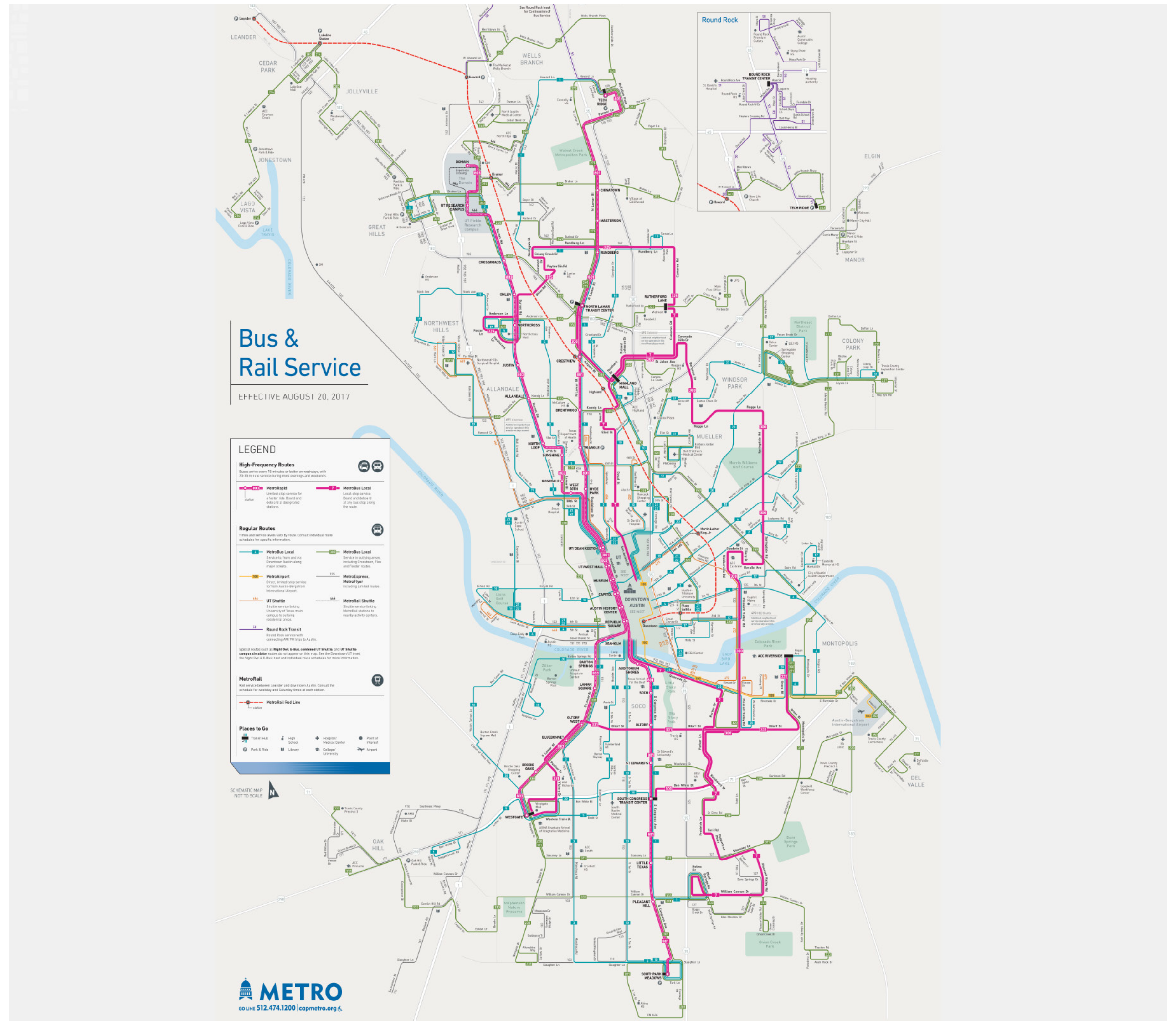


/ATXTransportation



AustinTexas.Gov/2016Bond

Local Public Transit



CITY OF AUSTIN
austin
MOTION
2016 MOBILITY BOND



@AustinMobility



@AustinTexasGov



/ATXTransportation



AustinTexas.Gov/2016Bond

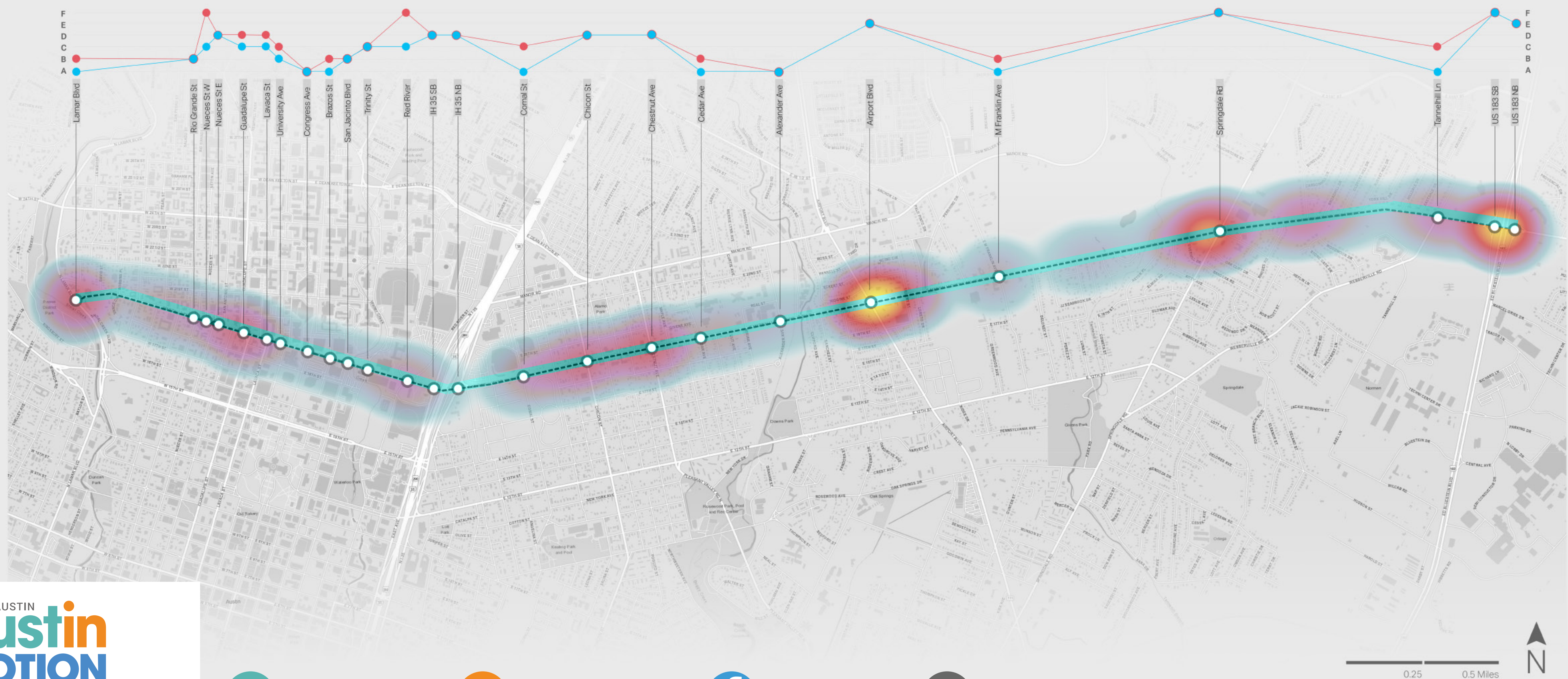
Martin Luther King Jr. Blvd. / FM 969 Crash Heatmap

CRASH LOCATION HEATMAP

Increasing Density of Crashes →

INTERSECTION LEVEL OF SERVICE

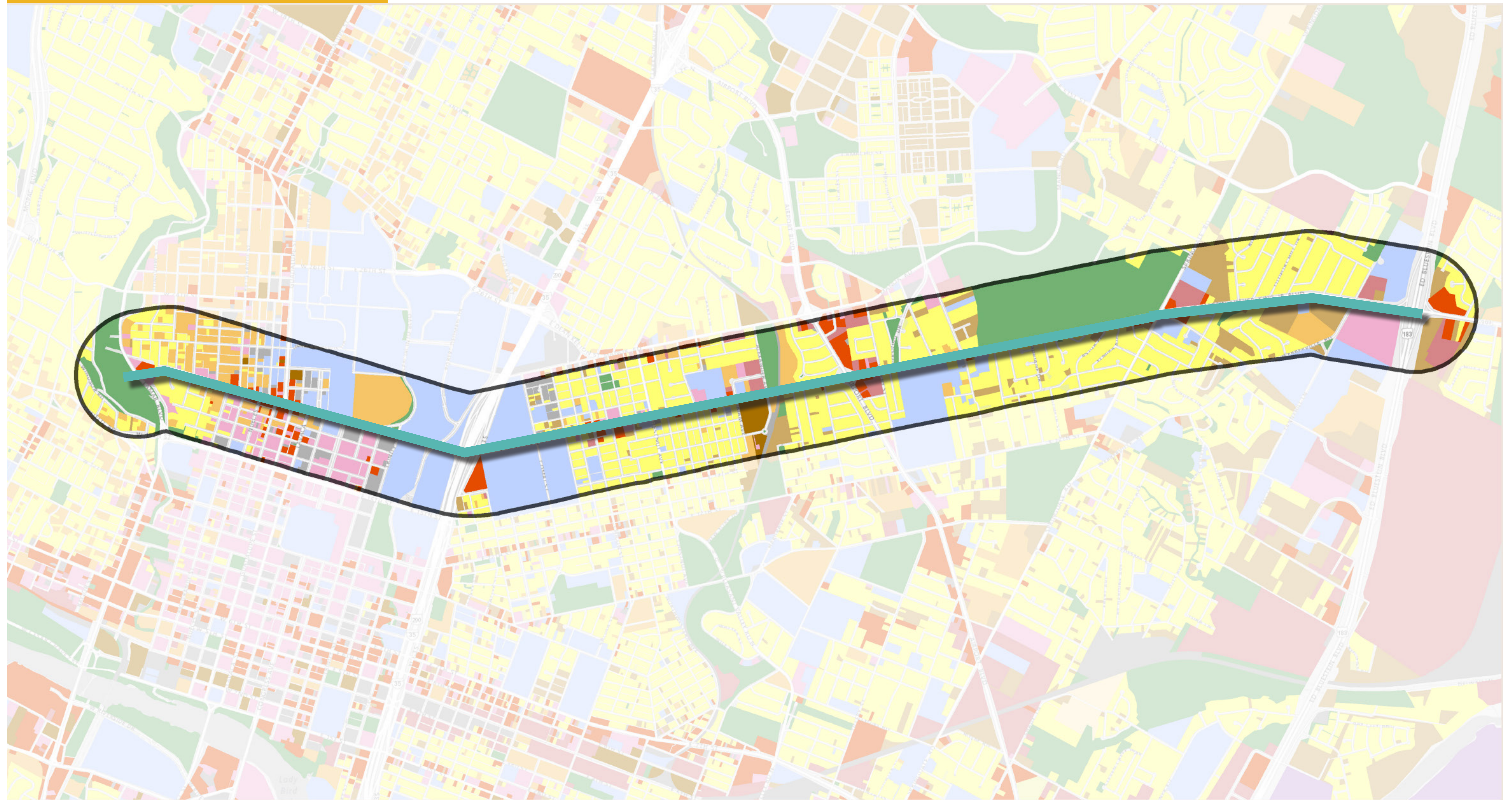
- AM Level of Service
- PM Level of Service



CRASH LOCATION
HEATMAP + INTERSECTION
LEVEL OF SERVICE



EXISTING LAND USE



Land Uses				
Large Lot Single Family	Mixed-Use	Resource Extraction (Mining)	Parking	
Single Family	Apartment/Condo	Office	Educational	Transportation Facilities
Mobile Homes	Commercial	Manufacturing	Parks/Greenbelts	Underdeveloped

0 0.25 0.5 1 Miles
 Service Layer Credits: Esri, HERE, DeLorme, N



@AustinMobility



@AustinTexasGov



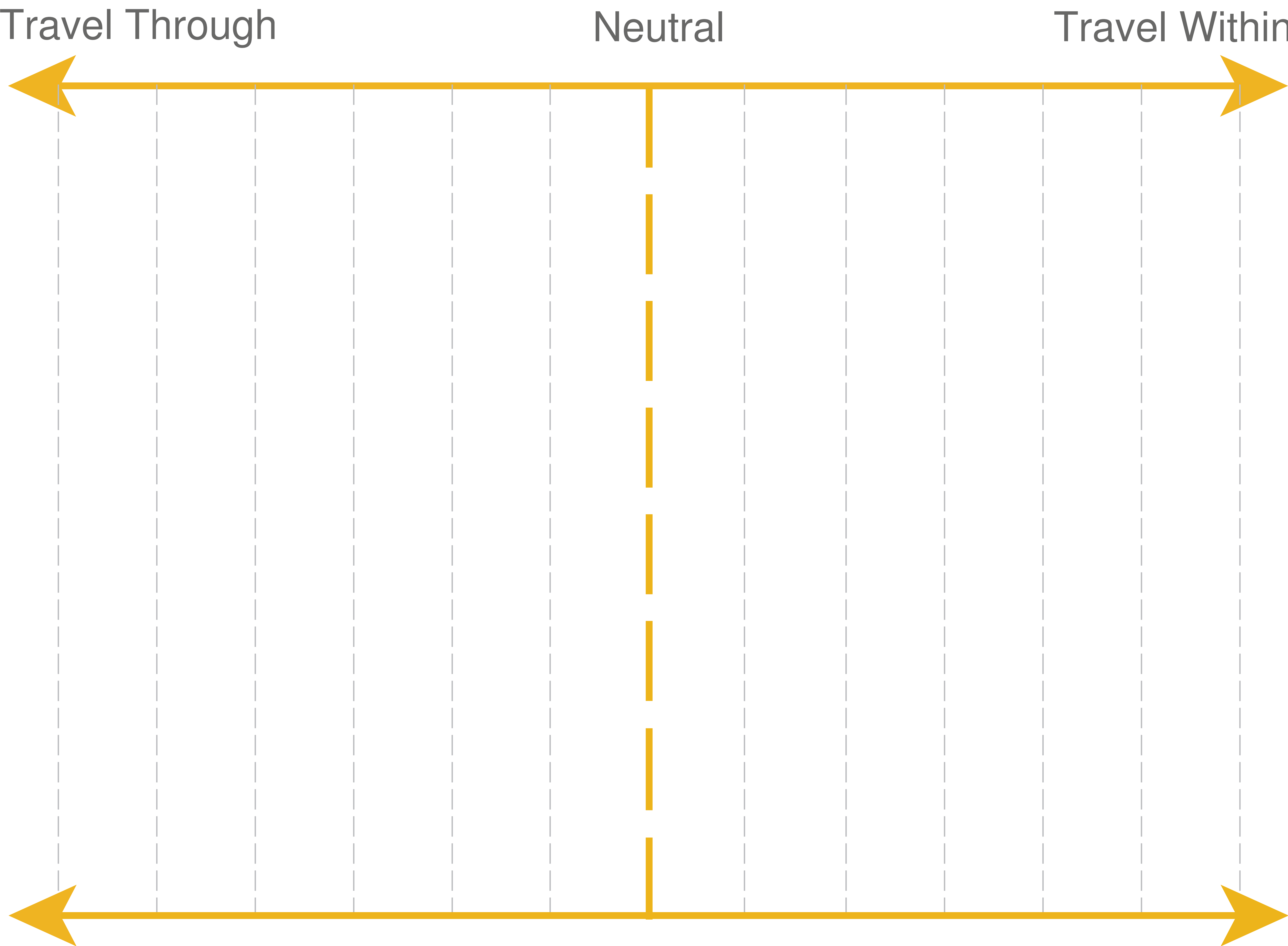
/ATXTransportation



AustinTexas.Gov/2016Bond

Martin Luther King Jr. Blvd. / FM 969 Travel Array

Place your dot on the scale below. Is travel through or travel within the corridor most important to you?





MARTIN LUTHER KING JR. BLVD. / FM 969 CORRIDOR MOBILITY PLAN



WELCOME

January 23
PUBLIC OPEN HOUSE
5:30pm - 8:00pm



BIENVENIDO

23 de Enero
REUNIÓN PÚBLICA
5:30pm - 8:00pm



IMPROVING SAFETY, MOBILITY AND CONNECTIVITY FOR EVERYONE,
INCLUDING PEOPLE WHO DRIVE, WALK, BIKE AND TAKE TRANSIT.