

# Austin Public Health

## BEATF Investments in Facilities & Assets Working Group

Filip Gecic, Facility Planning Manager

August 13, 2025

# Agenda

---

- Department Overview
- APH Bond Funding History
- APH Bond Successes
- Data Background for Proposals
- Northeast Public Health Center
- Colony Park Public Health Center
- Guiding Principles and Scoring





# Austin Public Health: The Heart

**Mission:** To prevent disease, promote health, and protect the well-being of all.



Low-cost  
vaccinations



Health screenings



Infant &  
maternal health



Birth and death  
certificates



Diabetes education  
and prevention  
classes



Food truck, restaurants,  
pool and water feature  
inspections



Mosquito testing  
and abatement



Rent assistance, food pantries,  
job application support

# Austin Public Health: Centers of Service

Mission: To prevent disease, promote health, and protect the well-being of all.



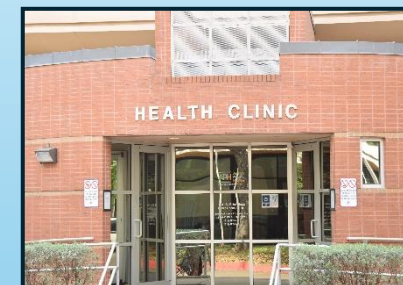
14 WIC Clinics



6 Neighborhood Centers



2 Shots for Tots and Big Shots Clinics + Weekly Mobile Clinics



Sexual Health Clinic



Refugee Services Clinic



Mom's Place Lactation Support Center



Office of Vital Records

# Bond History- Austin Public Health

- Austin Public Health has received less than 1% of the City Bond Appropriation since 1998.

| Bond Election Year  | Voters Authorized      | Sum of APH Appropriation |
|---------------------|------------------------|--------------------------|
| 1998                | \$339,740,000          |                          |
| 2000                | \$163,400,000          |                          |
| 2006                | \$567,400,000          |                          |
| 2010                | \$90,000               |                          |
| 2012                | \$306,648,000          | \$11,148,000             |
| 2013                | \$65,000,000           |                          |
| 2016                | \$720,000,000          |                          |
| 2018                | \$925,000,000          | \$16,000,000             |
| 2020                | \$460,000,000          |                          |
| 2022                | \$350,000,000          |                          |
| <b>Grand Totals</b> | <b>\$3,897,278,000</b> | <b>\$27,148,000</b>      |

# Bond Appropriated Funds (1998 – 2022)

Blue Shaded Area - \$3,897,278,000

All other city departments.

Orange Shaded Area - \$27,148,000

Austin Public Health Funding

Less than 1%



## APH Projects Completed With Past Bond Funding

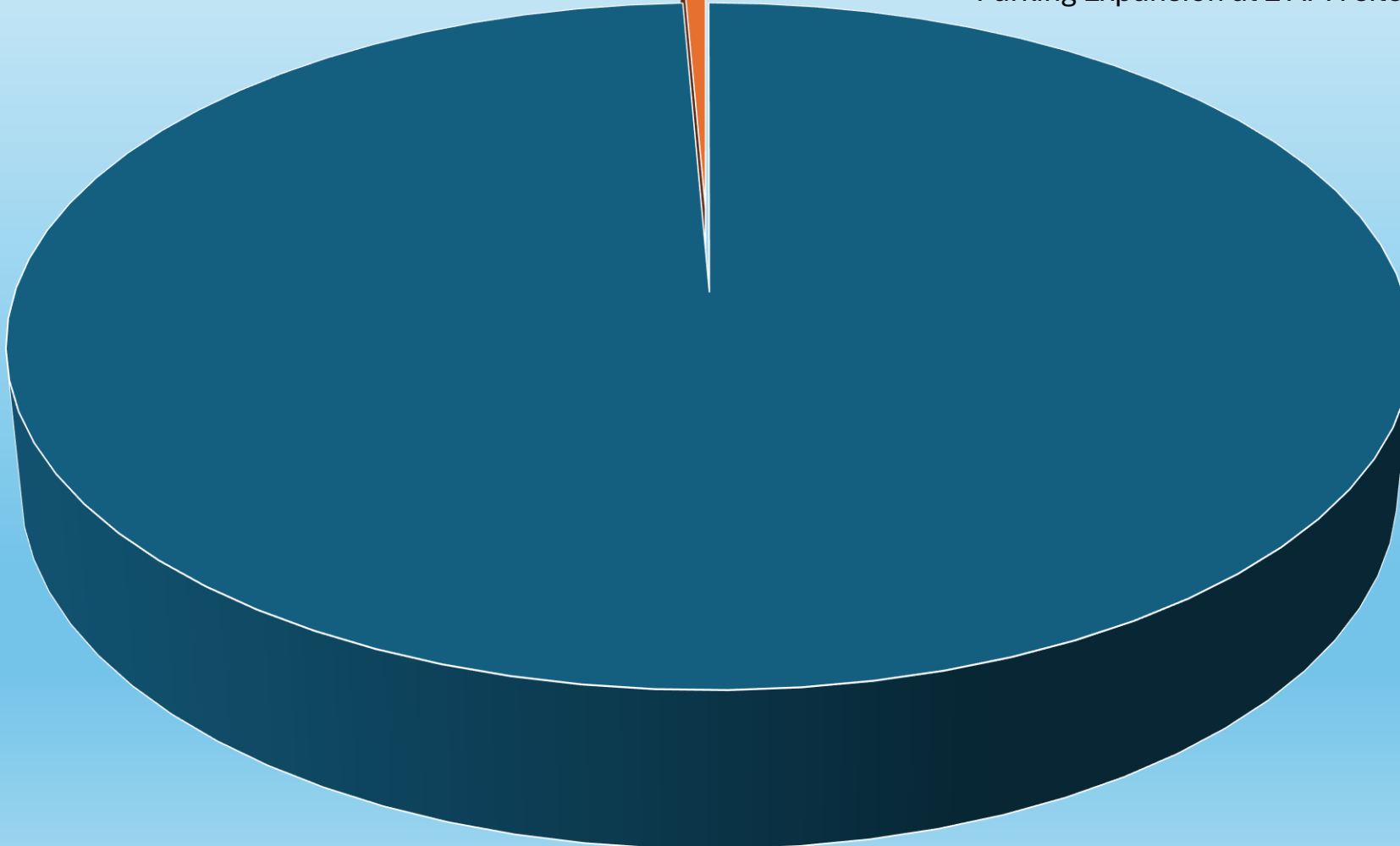
\*Dove Springs Health Center

\*Montopolis Recreation Public Health Center

\*Women's & Children's Center

\*Betty Dunkerly & Animal Center Improvements

\*Parking Expansion at 2 APH sites





# APH Bond Success Stories



## DOVE SPRINGS HEALTH CENTER

- 2024 - \$16 million budget completed on time.
- Full-Service Neighborhood Center
  - Immunizations Clinic
  - WIC Clinic
  - Youth Services
  - High-Quality Child-Care Center
  - PARD Soccer Fields & Park Trails
  - Full Kitchen for Nutrition Class Demonstrations

*Video on next slide...*



# APH Bond Success Stories

## DOVE SPRINGS PUBLIC HEALTH CENTER 2024





# APH Bond Success Stories

*MPOX mass vaccine distribution:*



*Multi-Agency Resource Center,  
Winter Storm, 2023:*



## **Montopolis Recreation & Public Health Center**

- 2020 – \$15.5 million budget completed on time.
- Full-Service Neighborhood Center
- Youth Services
- Training rooms & Multipurpose community rooms
- Full – Service Recreation Center





# APH Bond Success Stories

## Women & Children's Center, 2018

- \*\$6.7 million budget completed in time (\$3.8 Bond & \$2.9 Council Funds) completed on time.**
- \*Added 36 New Beds, New Daycare, ADA Upgrades, & Site Improvements**



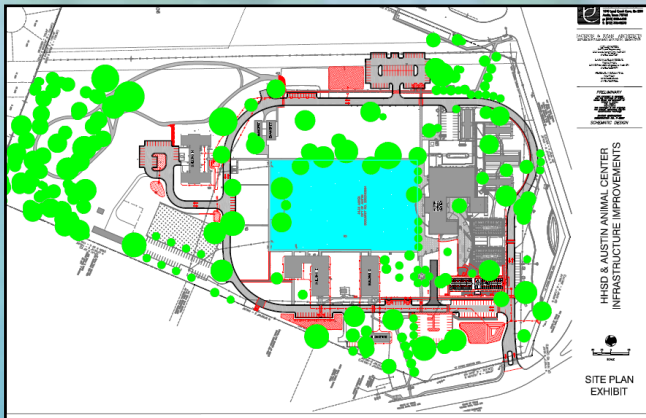


# APH Bond Success Stories

## Betty Dunkerley Campus Renovations & 50 Additional Animal Shelter Kennels, 2017

**\$1.7 million budget completed on time.**

**\*90 Parking Spaces, Drainage improvements, Side Walks & Trails**



## Parking expansion at two APH Sites, 2016

**- \$906,000 budget completed on time.**

**\*Far South Austin & Montopolis Centers**

**\*Drainage Management & Landscaping**





# Health Services Available To The Public



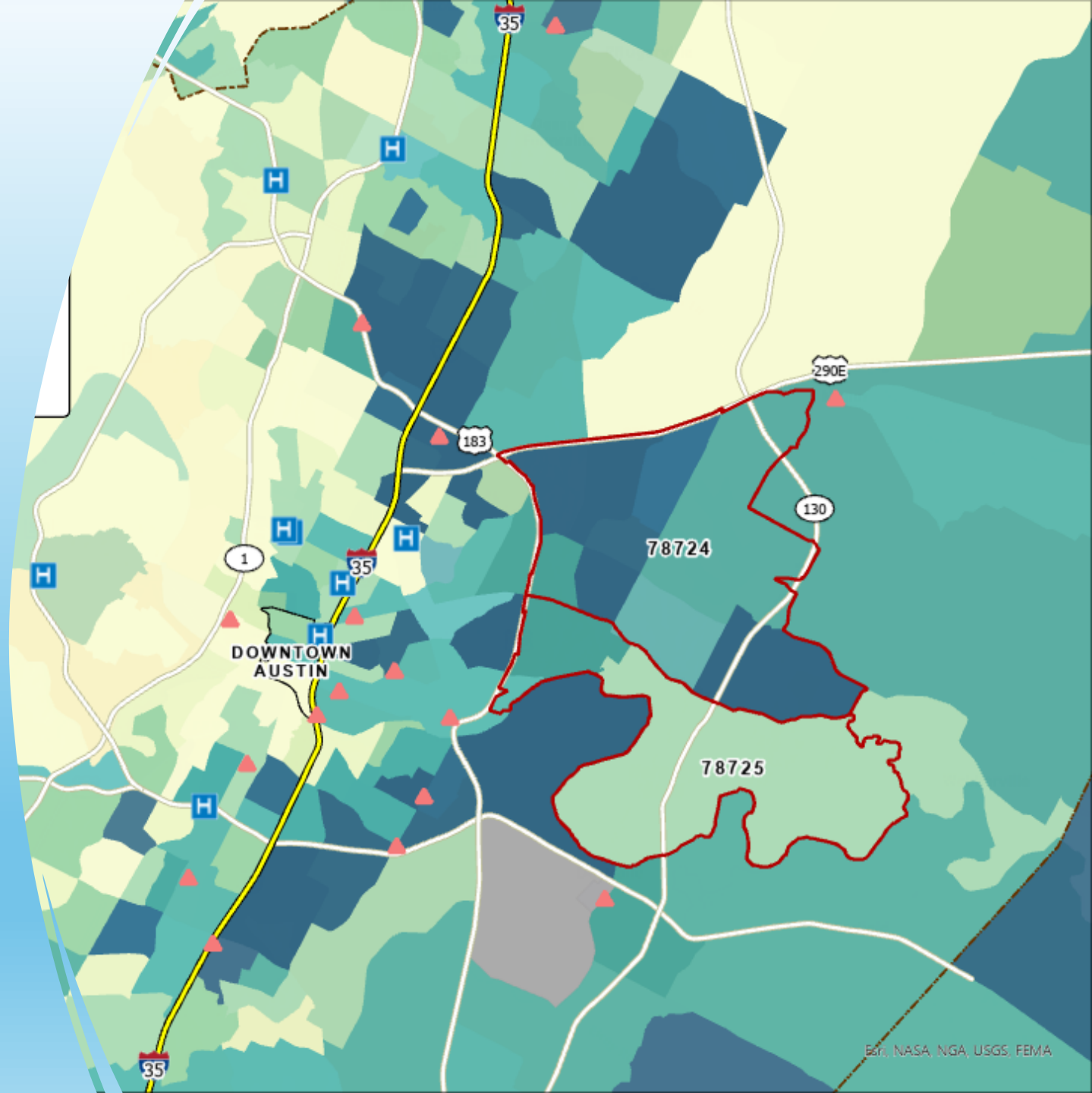




Epidemiological,  
Health Effects,  
and Quality of Life  
Data that  
determines our  
proposals.


# Colony Park Public Health Needs


- This map displays the need of the Colony Park Austin area, focusing on 2 Travis County Zip codes that the data pointed to:
  - 78724
  - 78725






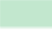



**Legend**

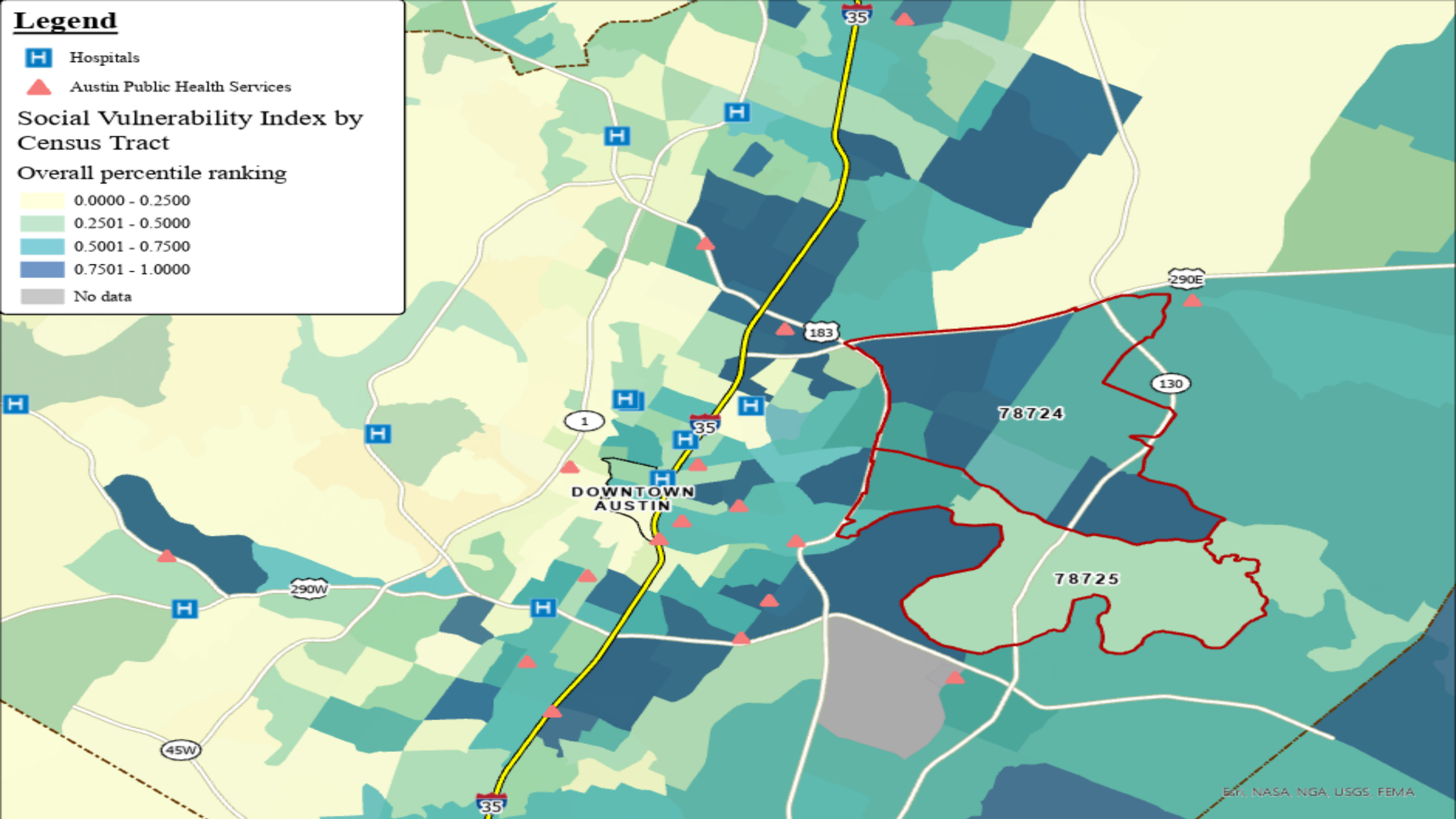
 Hospitals

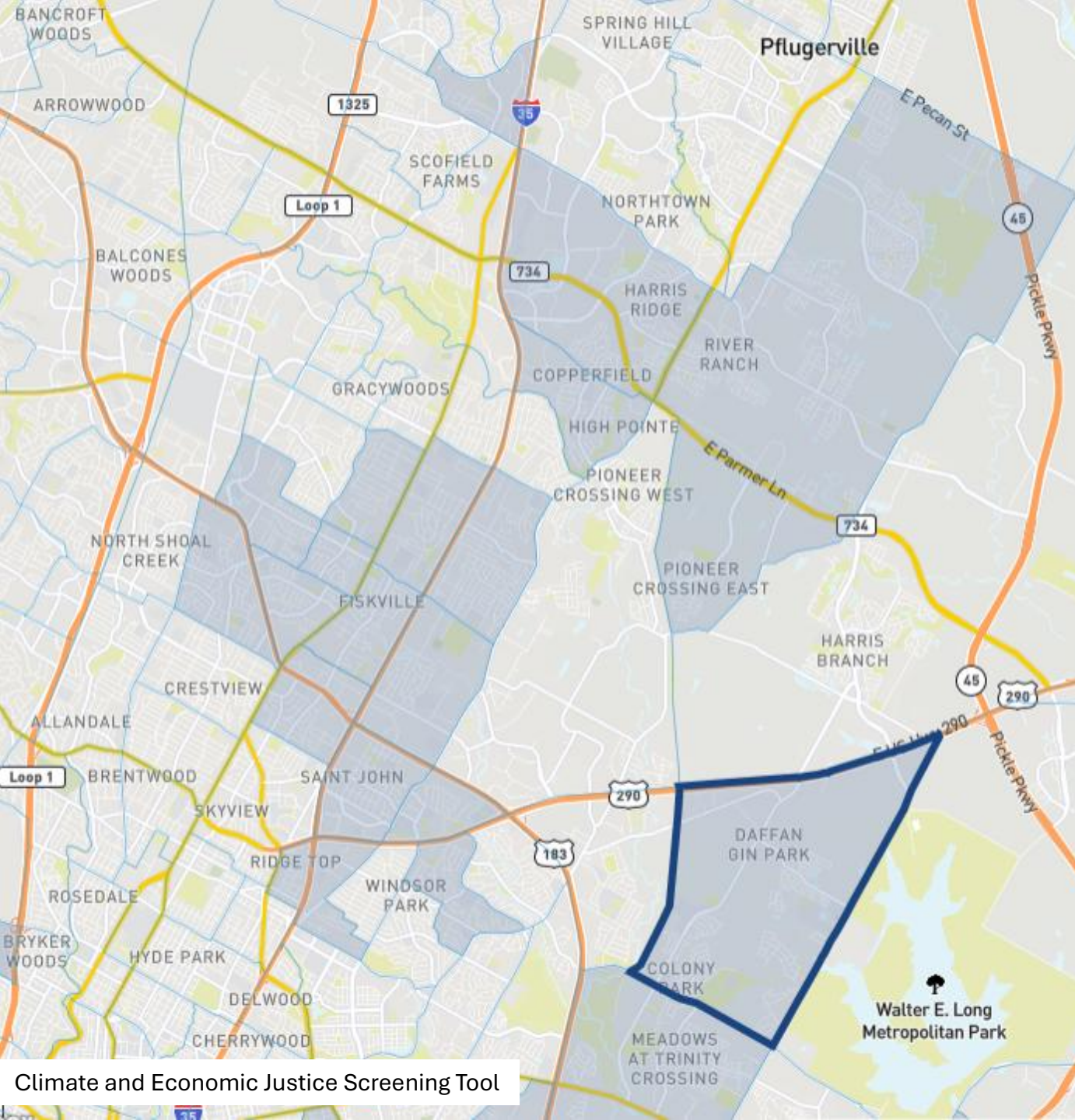
 Austin Public Health Services

**Social Vulnerability Index by Census Tract**

**Overall percentile ranking**

|   |                 |
|---|-----------------|
|  | 0.0000 - 0.2500 |
|  | 0.2501 - 0.5000 |
|  | 0.5001 - 0.7500 |
|  | 0.7501 - 1.0000 |
|  | No data         |





# Colony Park Area Equity Gap Analysis:

The grey areas **need and deserve accessible public health services**, each of the factors below puts them at **risk** for **adverse health effects and lower quality of life**.

CEJST information for the **dark blue** outlined area:

## Low income

People in households where income is less than or equal to twice the federal poverty level, not including students enrolled in higher ed

**95th**

above 65th percentile

## Linguistic isolation

Share of households where no one over age 14 speaks English very well

**97th**

above 90th percentile

## Housing cost

Share of households making less than 80% of the area median family income and spending more than 30% of income on housing

**97th**

above 90th percentile

## High school education

Percent of people ages 25 years or older whose high school education is less than a high school diploma

**42%**

above 10% percent



# Inequitable Travel Times to Each Current APH Location from Colony Park Zip Codes

Start: Random Apartments within 78724 zip code

Time: 8:00am; One way trip

Shots for Tots – St Johns  
7500 Blessing Ave

Neighborhood Center  
2800 Webberville Rd

WIC Clinic  
1101 Camino La Costa

Child Care Facility  
5706 Reicher Dr



10-15 minutes

14-30 minutes

10-26 minutes

8-20 minutes



40 minutes

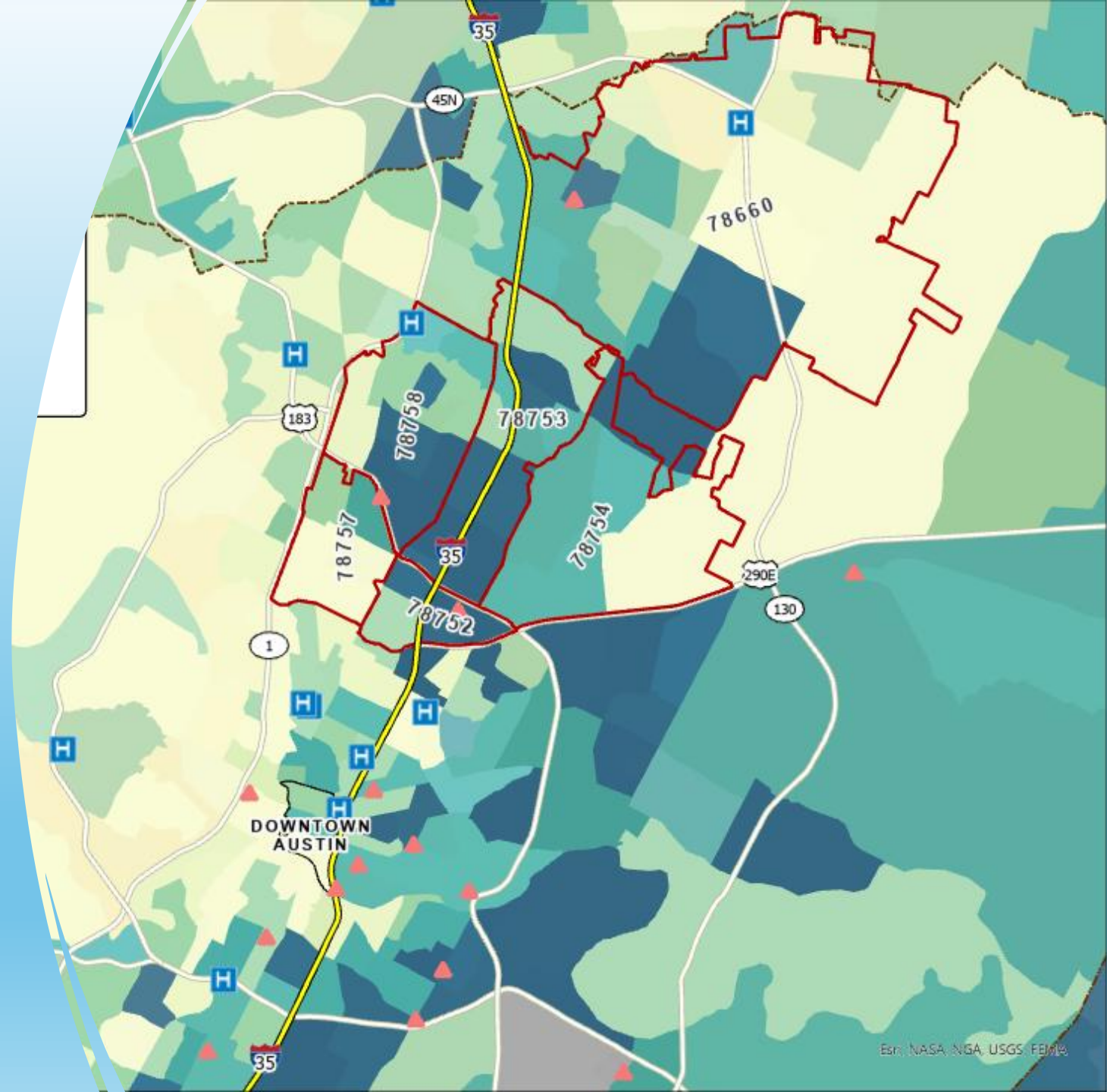
1 hour 8 minutes

31 minutes

31 minutes

# Northeast Public Health Needs

- This map displays the need of the northeast Austin area, focusing on 6 Travis County Zip codes that the data pointed to:
  - 78752
  - 78753
  - 78754
  - 78757
  - 78758
  - 78660





▲ Austin Public Health Services

## Social Vulnerability Index by Census Tract

Overall percentile ranking

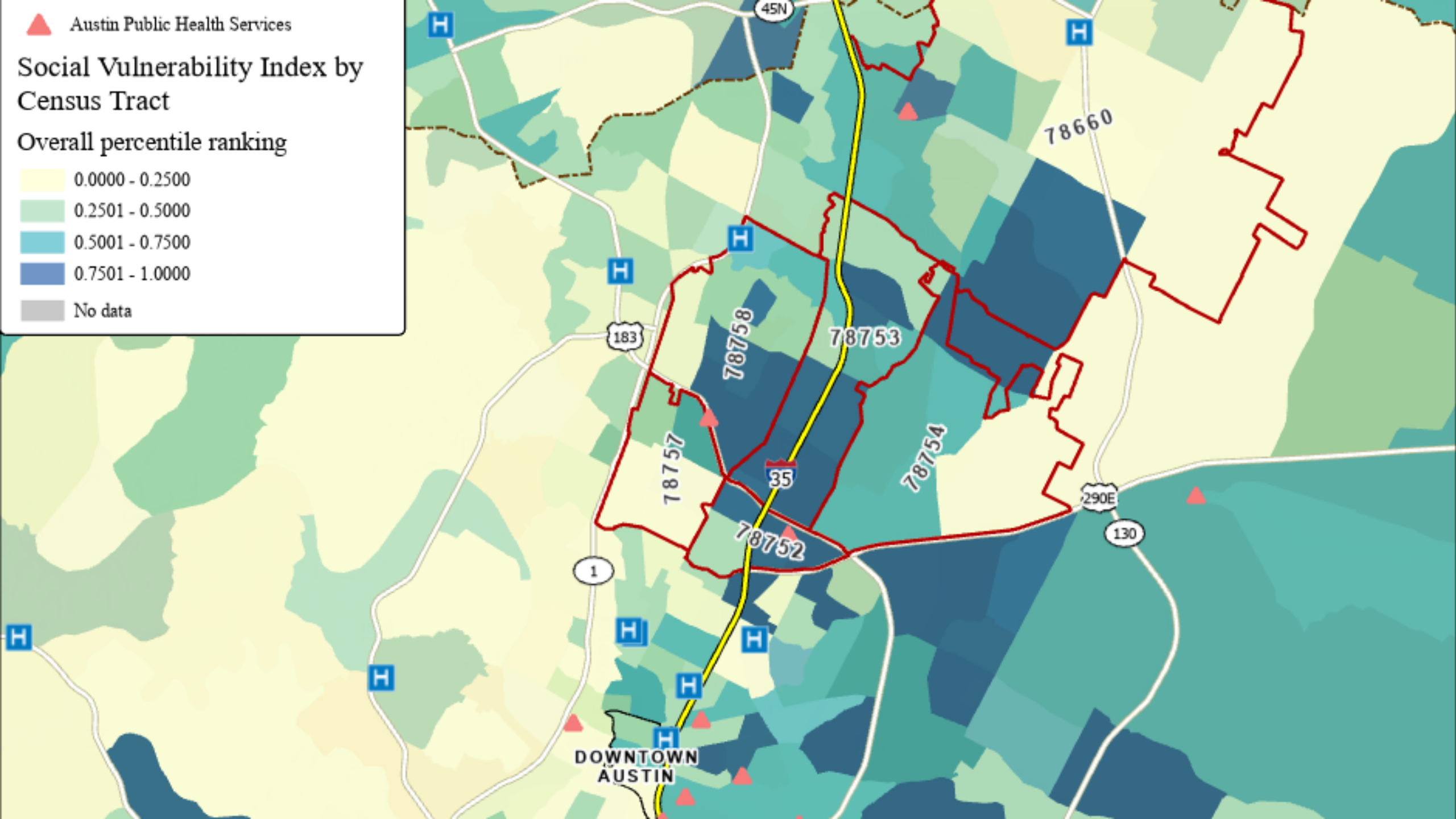
0.0000 - 0.2500

0.2501 - 0.5000

0.5001 - 0.7500

0.7501 - 1.0000

No data





# Austin/Travis County Northeast Equity Gap Analysis:

The grey areas **need and deserve accessible public health services**, each of the factors below puts them at **risk** for **adverse health effects and lower quality of life**.

CEJST information for the dark blue outlined area:

## Low income

People in households where income is less than or equal to twice the federal poverty level, not including students enrolled in higher ed

**87th**

above 65th percentile

## Linguistic isolation

Share of households where no one over age 14 speaks English very well

**98th**

above 90th percentile

## Housing cost

Share of households making less than 80% of the area median family income and spending more than 30% of income on housing

**92nd**

above 90th percentile

## High school education

Percent of people ages 25 years or older whose high school education is less than a high school diploma

**41%**

above 10% percent



# Inequitable Travel Times to Each Current APH Location from NE Zip Codes

Start: Random Apartments within 78753 zip code

Time: 8:00am; One way trip

Shots for Tots – St Johns  
7500 Blessing Ave

Refugee Services  
1000 Toyath Street

Sexual Health/TB Clinic  
15 Waller St

Child Care Facility  
2411 W. Braker Ln



10-18 minutes

24-45 minutes

22-40 minutes

8-16 minutes



1 hour 8 minutes

1.5 hours

1 hour 21 minutes

1 hour

# APH Bond 2026 Proposals





# Colony Park Public Health Center

- In Eastern Crescent of Travis County—a region characterized by significant poverty and health disparities
- Multiple Austin Public Health (APH) programs:
  - Neighborhood Center
  - Immunization Clinic
  - WIC Clinic
  - Youth Services
  - Child Care Center.
- It will include office spaces and a conference room to support partner organizations and host community events

# Colony Park Public Health Center

- In a collaborative effort APH plans to build this center as a joint facility with the Austin Public Library (APL) —on land currently owned by the City, located to the north and east of the Turner-Roberts Recreation Center.
- This project is envisioned as a cornerstone for public health in Colony Park, enhancing accessible, comprehensive preventative health services for its residents.
- Estimated Cost – \$41,843,000
- 30,000 square-foot multi-purpose facility
- It will serve over 125 clients daily
- 40 staff members



# Northeast Public Health Center

- In the Rundberg/Braker area as a comprehensive facility housing multiple Austin Public Health (APH) programs:
  - Neighborhood Center
  - Immunization Clinic
  - WIC Clinic
  - Sexual Health Clinic
  - Youth Services
  - Refugee Services Center
- Office and conference room spaces to facilitate collaboration with partner organizations and host various events.

# Northeast Public Health Center

- This facility will free up the existing Refugee Clinic building.
- It will also allow the Immunization Clinic to relocate from the leased St. John Community Center
- Finally, it will enable the WIC program to phase out of its leased building in the northwest Austin.
- Estimated Cost - \$51,321,000
- 40,000 square-foot multi-purpose facility
- It will serve over 150 clients daily
- 55 staff members



# Guiding Principles

- Advancing Equity
- Promoting Affordability
- Fostering Innovation
- Sustainability & Resiliency
- Proactive Prevention
- Community Trust and Relationships



# Technical Criteria



1. Inclusive Facility Design
2. Cost-effective Construction and Operations
3. Innovative Facility Solutions
4. Sustainable and Resilient Infrastructure
5. Preventive Health-Centric Facility Planning
6. Community-Centered Facility Development



# APH Scoring Matrix



## Technical Criteria Scoring Matrix

|        |                                   |   |   |                  | Northeast PHC  | Colony Park PHC |
|--------|-----------------------------------|---|---|------------------|----------------|-----------------|
| #      | COA Guiding Principles            | APH Technical Criteria                      | COA Master Plans Alignment  | Available Points | Awarded Points | Awarded Points  |
| 1      | Equity                            | Inclusive Facility Design                   | Austin Climate Equity Plan, Austin Strategic Housing Blueprint  | 20               | 20             | 20              |
| 2      | Affordability                     | Cost-effective Construction and Operations  | Austin Energy Resource, Generation, and Climate Protection Plan   | 16               | 14             | 15              |
| 3      | Innovation                        | Innovative Facility Solutions               | Austin-Travis County Community Wildfire Protection Plan   | 10               | 9              | 10              |
| 4      | Sustainability and Resiliency     | Sustainable and Resilient Infrastructure    | Environmental Investment Plan, Water Forward, Heat Resilience Playbook, Watershed Protection Strategic Plan | 14               | 14             | 14              |
| 5      | Prevention                        | Preventive Health-Centric Facility Planning | Austin-Travis County Food Plan, Parks and Recreation Department's Long-Range Plan and Land Management Plan  | 20               | 19             | 19              |
| 6      | Community Trust and Relationships | Community-Centered Facility Development     | Austin Strategic Mobility Plan, Collaborative Travis County-City of Austin Initiatives                      | 20               | 20             | 20              |
| Total: |                                   |   |   | 100              | 96             | 98              |

# Questions and Comments

