



# MANOR ROAD / CHERRYWOOD ROAD

## Multimodal Intersection Improvement Project

### OVERVIEW

The planned improvements to Manor Road at Cherrywood Road are designed to increase multimodal mobility and safety by installing new left turning lanes, transit stops, pedestrian and bicycle infrastructure and upgrading existing facilities. Improvements include a new raised crosswalk, new shared use paths, new Americans with Disabilities Act (ADA)-accessible curb ramps, restriped high-visibility crosswalks, and upgraded signal phasing to enhance connectivity for everyone traveling through the area.

### PLANNED IMPROVEMENTS

- Two new dedicated left turn lanes for people heading east on Manor Road and north on Cherrywood Road
- Upgraded sidewalks and shared use paths on Manor Road and Cherrywood Road approaching the intersection, with enough space for people walking and people riding bikes
- Upgraded pedestrian infrastructure, including restriped high-visibility crosswalks and new ADA-accessible curb ramps on all four corners
- Upgraded bicycle facilities, including new ramps for people riding bikes on the shared use paths
- Reconfiguration of the right turn pocket at southbound Cherrywood/westbound Manor Road, providing safer turns for Capital Metro buses and a new raised crosswalk
- Driveway modifications to increase safety and reduce the number of conflict points
- New and relocated Capital Metro bus stops for easier customer access

### TIMELINE

- Anticipated construction start: Summer 2021
- Construction anticipated to last 6 months\*

*\*Barring weather delays or other unforeseen circumstances*

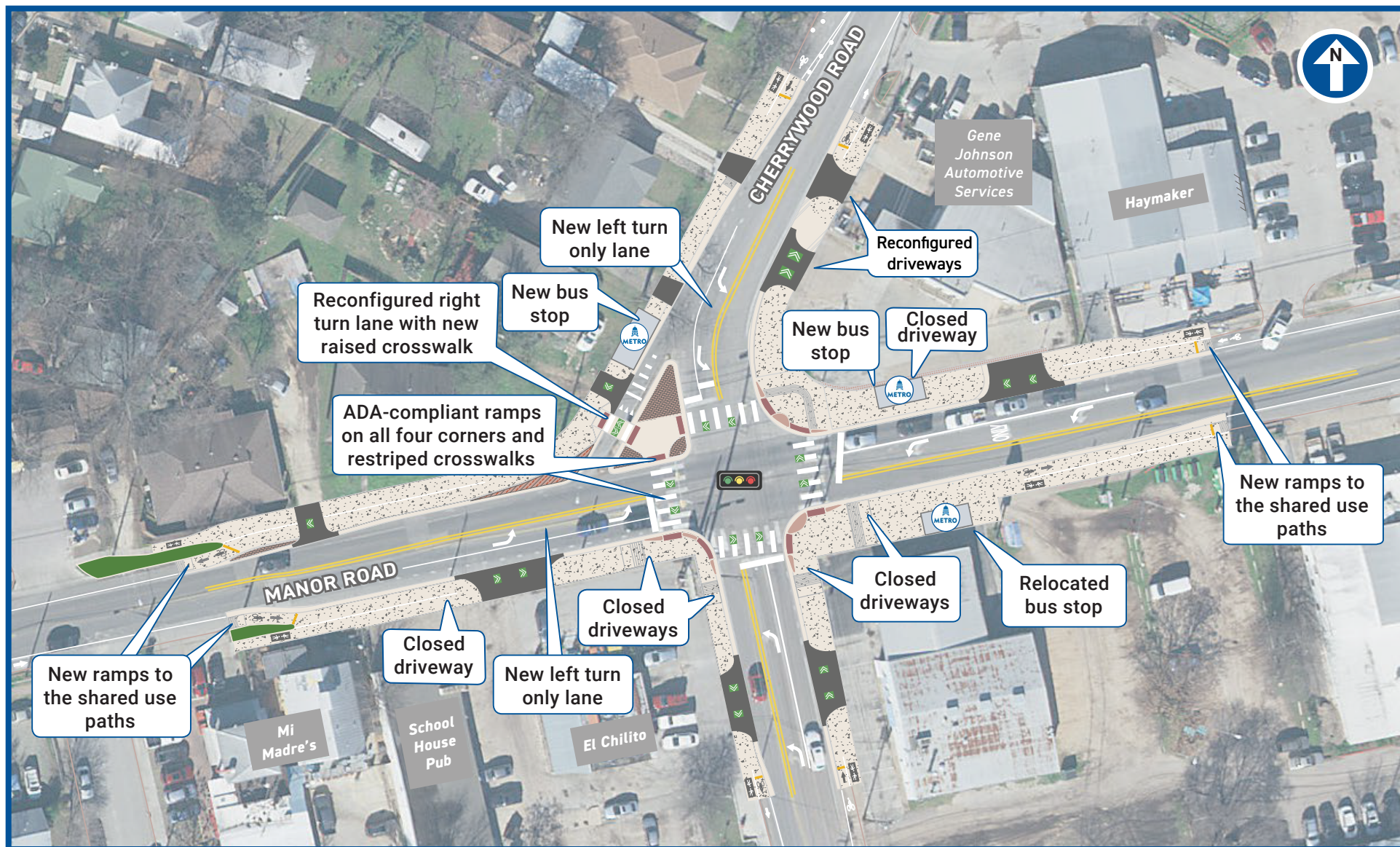
### COVID-19

The City of Austin's top priority is the health and safety of our crews and the public. The COVID-19 pandemic is being monitored daily and may impact construction schedules.

For COVID-19 updates and resources, please visit  
**[AustinTexas.gov/COVID19](https://austintexas.gov/COVID19)**

# MANOR ROAD / CHERRYWOOD ROAD

## Multimodal Intersection Improvement Project



Map is not drawn to scale or intended to be used for engineering purposes. Not all roads and businesses may be shown or named.