




City of Austin Adopts New Carbon Monoxide Alarm Requirements

Austin City Council recently adopted the 2015 International Property Maintenance Code to regulate the minimum maintenance requirements for existing residential and commercial buildings. One amendment involves the installation and maintenance of carbon monoxide alarms. Effective **April 1, 2018**, residential and commercial structures with gas or fuel-burning appliances are required to install and maintain carbon monoxide alarms.

DO YOU NEED A CARBON MONOXIDE DETECTOR?

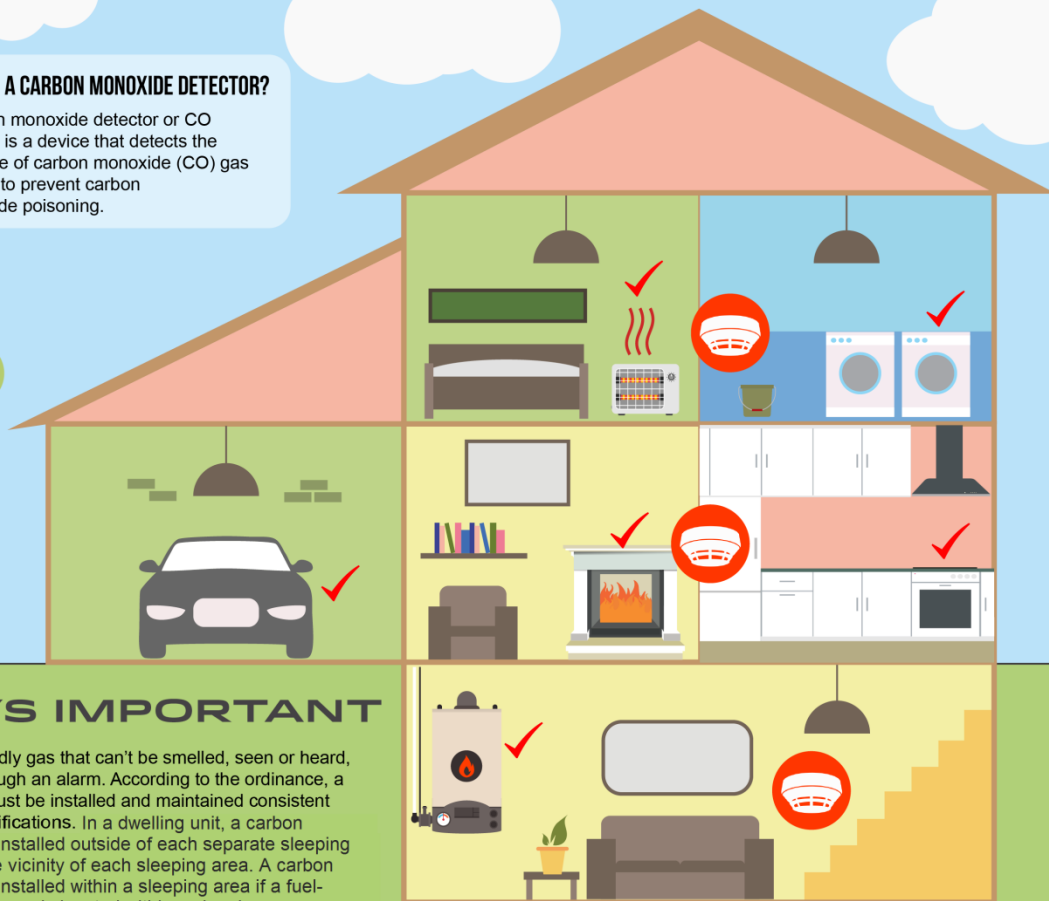
 **YES, IF YOU HAVE ANYTHING THAT USES FUEL OR GAS SUCH AS ...**

-  WATER HEATER
-  CONNECTED GARAGE
-  FIRE PLACE
-  GAS STOVE
-  GAS HEATERS
-  GAS DRYER



WHAT IS A CARBON MONOXIDE DETECTOR?

A carbon monoxide detector or CO detector is a device that detects the presence of carbon monoxide (CO) gas in order to prevent carbon monoxide poisoning.



WHY IT'S IMPORTANT

Carbon monoxide is a deadly gas that can't be smelled, seen or heard, but it can be detected through an alarm. According to the ordinance, a carbon monoxide alarm must be installed and maintained consistent with manufacturer's specifications. In a dwelling unit, a carbon monoxide alarm must be installed outside of each separate sleeping area and in the immediate vicinity of each sleeping area. A carbon monoxide alarm must be installed within a sleeping area if a fuel-burning or solid fuel appliance is located within a sleeping area, a bathroom attached to the sleeping area, or a garage attached to the sleeping area.

FIND OUT MORE AT AUSTINTEXAS.GOV/CODE



AUSTINCODE
DEPARTMENT