



September 8, 2017

# **PLANNING AND ZONING DEPARTMENT**

## **2018 BOND: REINVESTMENT IN FACILITIES AND ASSETS WORKING GROUP**

# Imagine Austin: Background



- Adopted June 2012
- First Plan Since 1970s
- Mandated by Charter
- 18,000+ Participants

# Imagine Austin: Vision



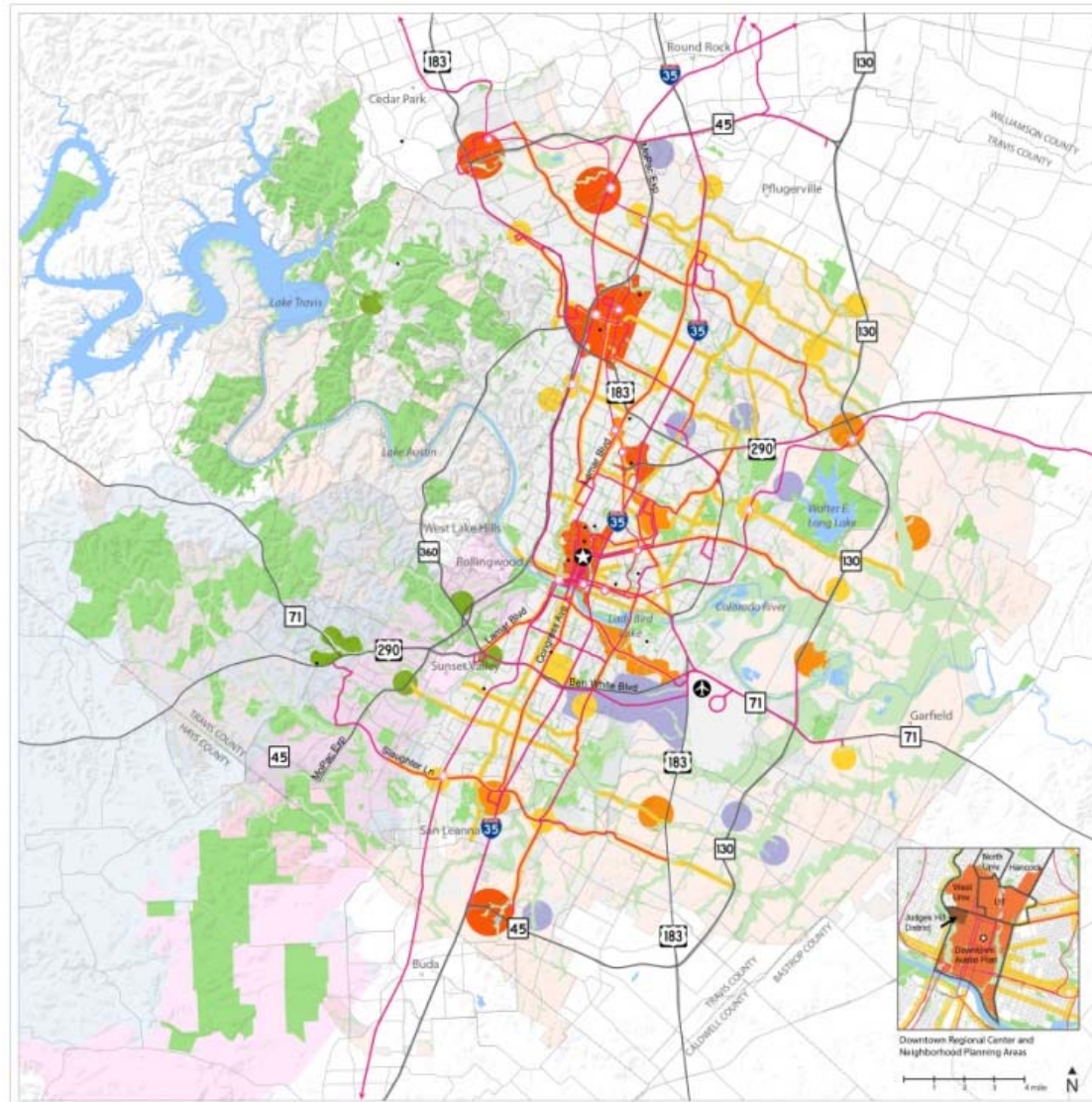
**MOBILE AND  
INTERCONNECTED**



**NATURAL AND  
SUSTAINABLE**



**PROSPEROUS**



**LIVABLE**



**CREATIVE**

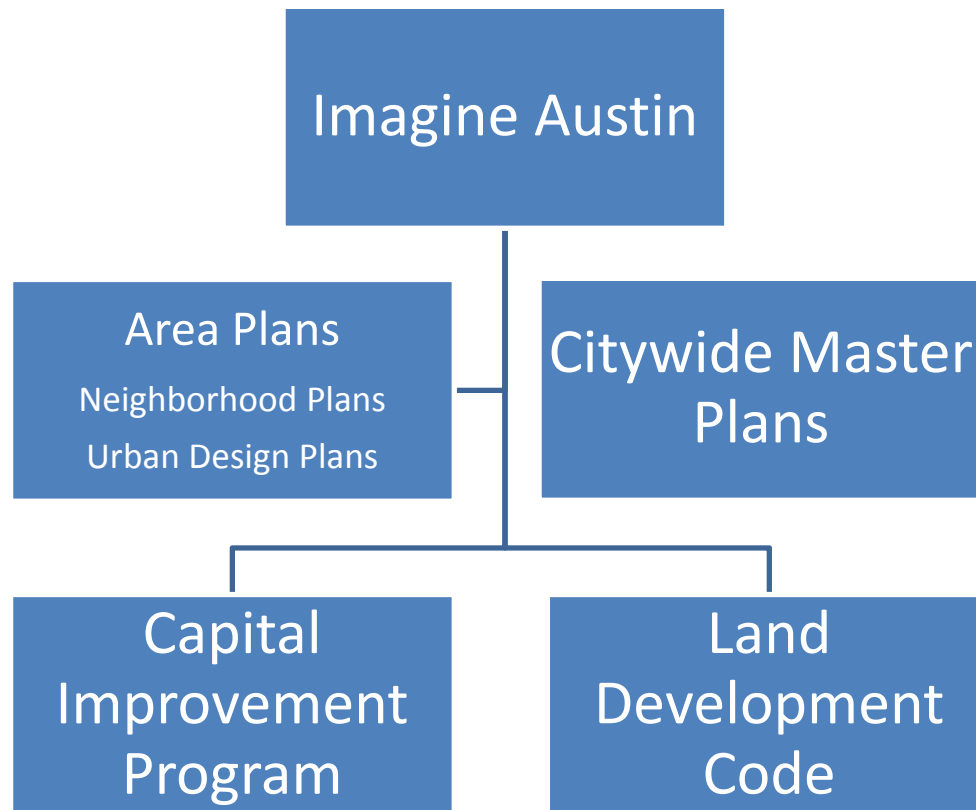


**EDUCATED**



**VALUES AND  
RESPECTS PEOPLE**

# Imagine Austin: Policy Framework



# Long Range CIP Strategic Plan: Purpose and Scope



## Drivers:

- Policy and Planning Priorities
- Urgent Needs
- Capital Renewal
- Service Demands

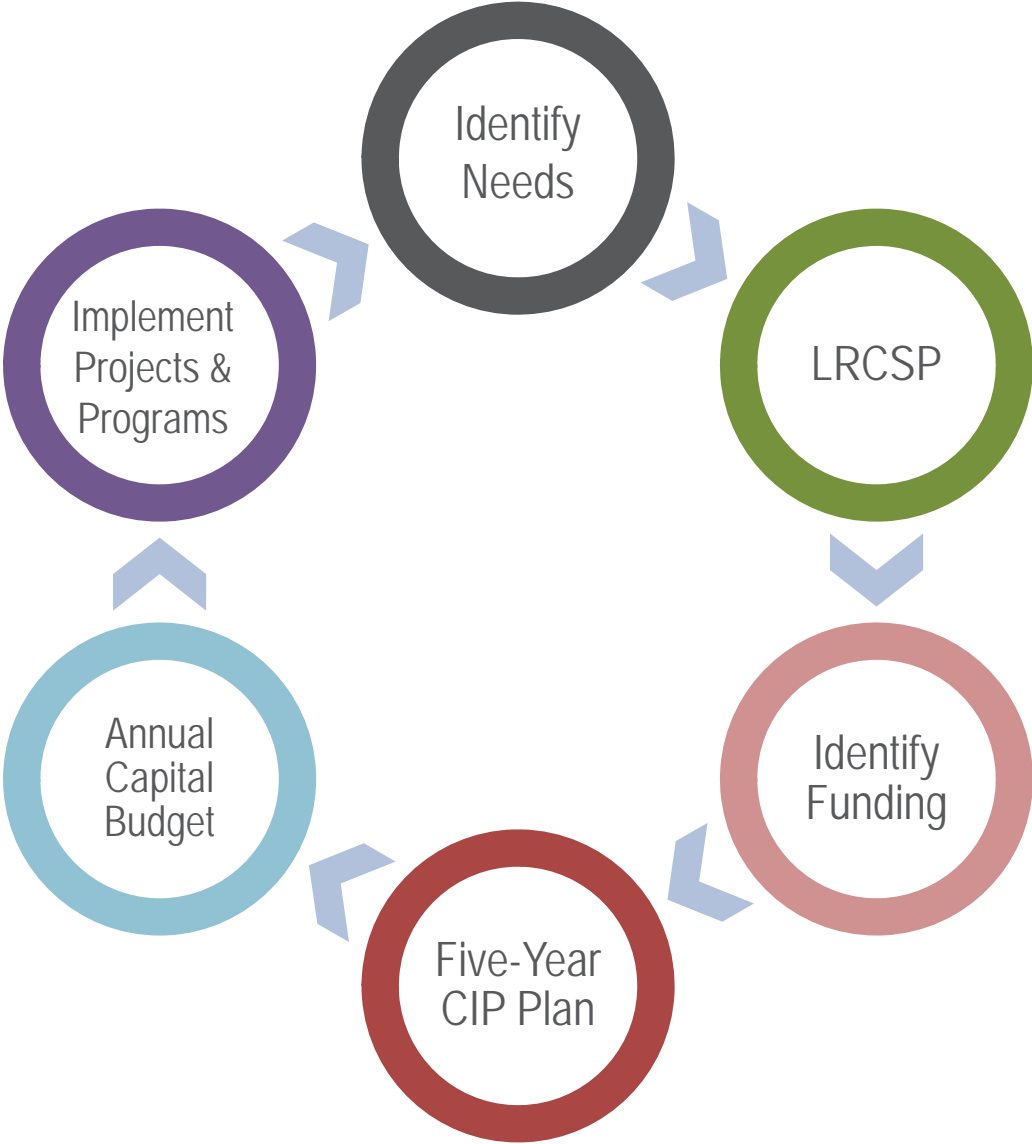


## Components:

- Strategic Investment Analysis
- Comprehensive Infrastructure Assessment
- Rolling Needs Assessment



# Long Range CIP Strategic Plan: Process



# Bond Needs Assessment

Imagine Austin  
(40+ Years)

LRCSP Rolling Needs Assessment

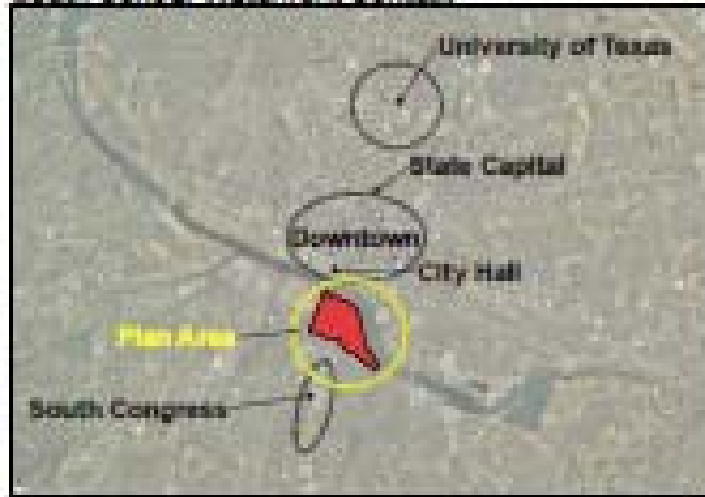
Bond Needs Assessment

PAZ Catalytic  
Project Needs

South Central  
Waterfront  
Program

# South Central Waterfront: Background

South Central Waterfront Context



Final Plan as Adopted on June 16<sup>th</sup>, 2016

## SOUTH CENTRAL WATERFRONT VISION FRAMEWORK PLAN



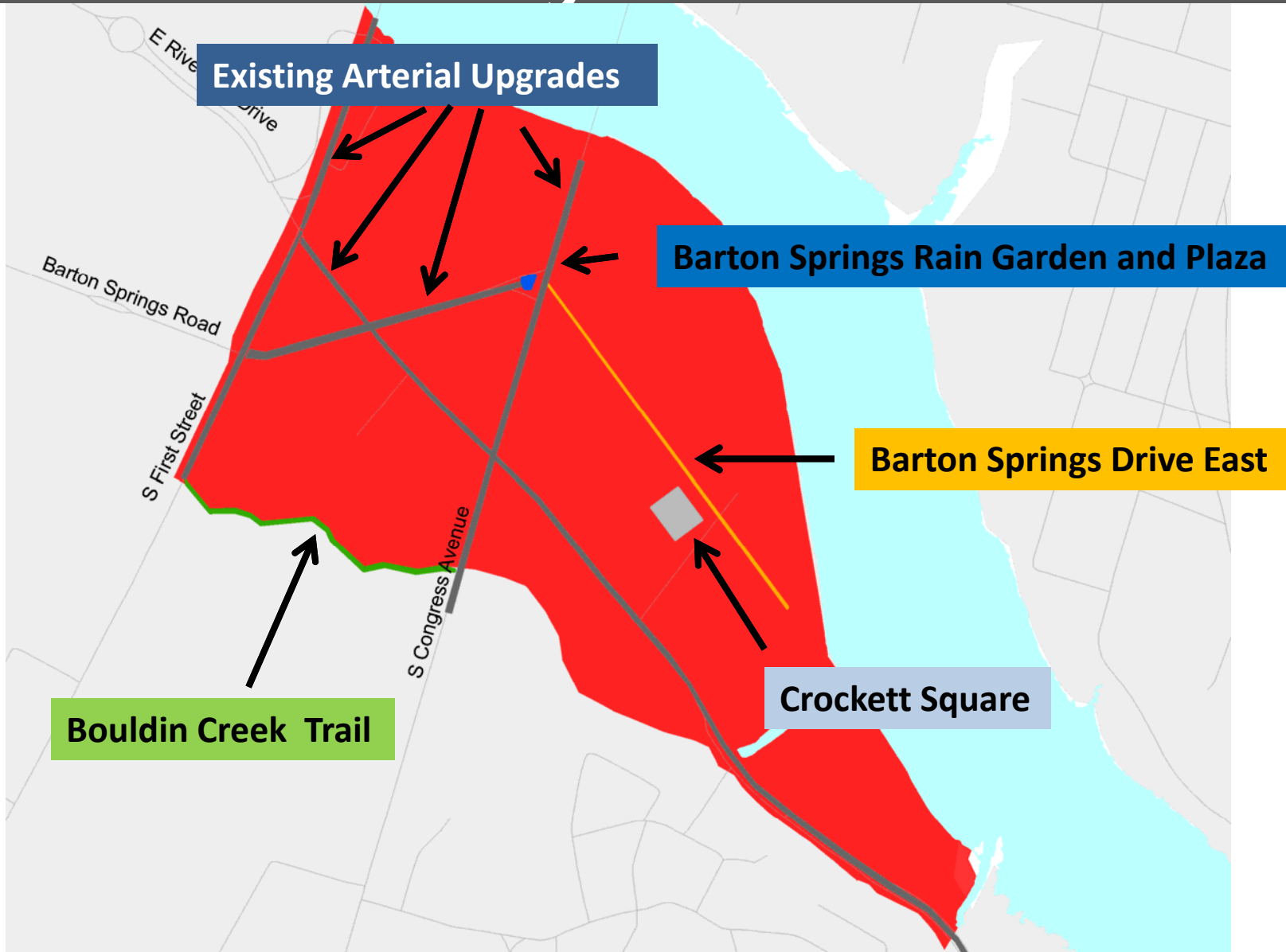
June 2016



Austin, Texas



# South Central Waterfront: Catalytic Investments



# South Central Waterfront: Funding Needs

<b>South Central Waterfront Program</b>	Funding for various projects included in the Council-adopted South Central Waterfront Plan	<b>\$12,336,000</b>
Barton Springs Rain Garden and Plaza	Construct Barton Springs rain garden and public plaza	1,050,000
Existing Arterial Upgrades	Design and engineering to upgrade existing arterials	3,594,000
Barton Springs Drive East	50% match for Barton Springs Drive East	1,554,000
Crockett Square	50% match for Crockett Square	2,426,000
Bouldin Creek Trail	50% match for construction of Bouldin Creek Trail	3,712,000

# Questions?

**Stevie Greathouse**, Program Manager  
Planning and Zoning Department  
City of Austin  
[Stevie.Greathouse@austintexas.gov](mailto:Stevie.Greathouse@austintexas.gov)

**Lizzy Smith**, Planner  
Planning and Zoning Department  
City of Austin  
[Lizzy.Smith@austintexas.gov](mailto:Lizzy.Smith@austintexas.gov)



**IMAGINEAUSTON**  
Vibrant. Livable. Connected.