

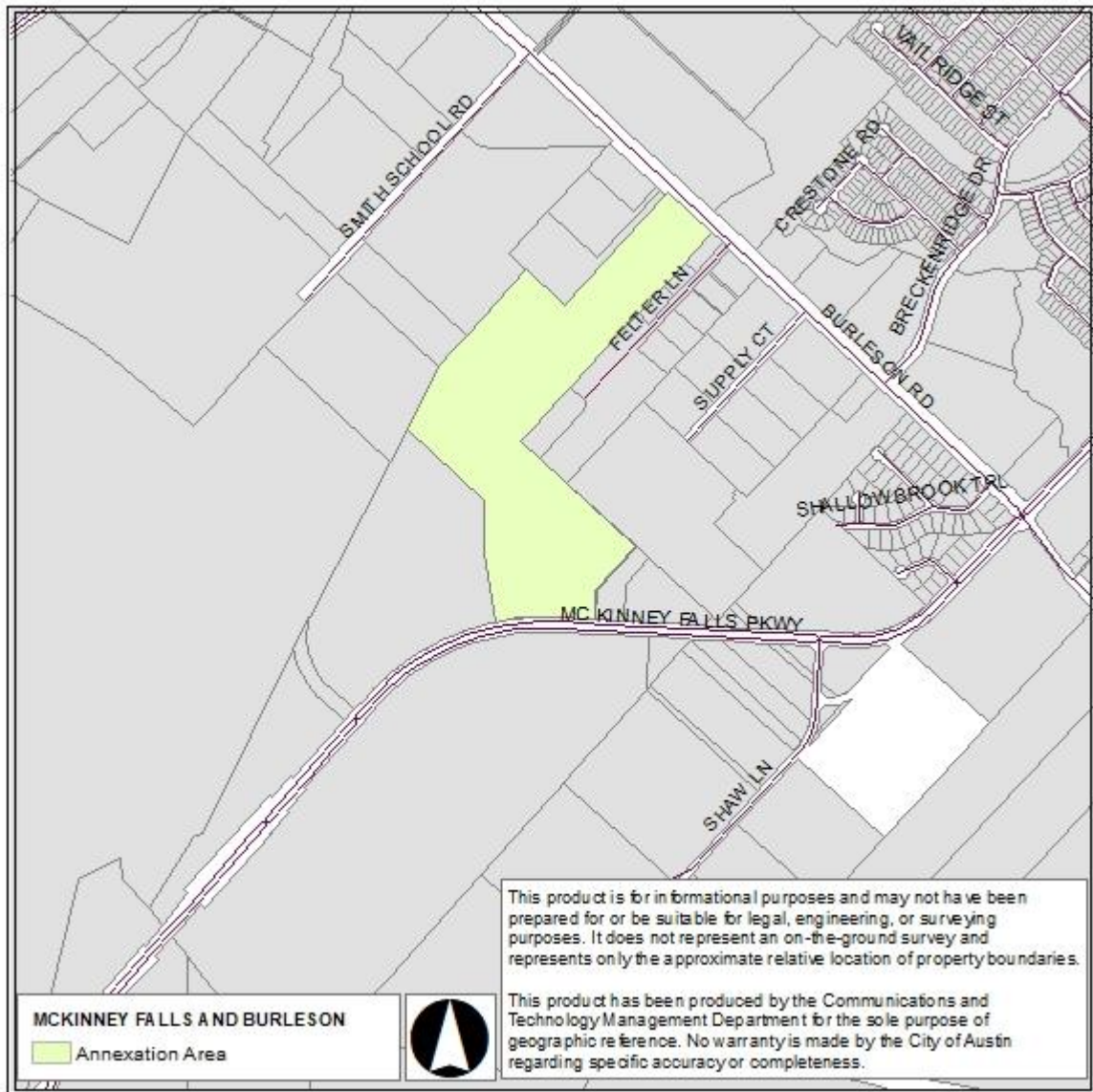


*Communications and Technology Management
Geospatial Data Maintenance*

MCKINNEY FALLS AND BURLESON

Case Number: C7A-2020-0002
Ordinance: 20200730-006
Effective: August 10, 2020
FULL PURPOSE ANNEXATION

RESPONSE AREAS
APD RA: FRANK 6
AFD RA: 00-3507
EMS RA: SOUTH 3308



Street Ranges affected by Annexation:

NOTES	STREET NAME	ODD FROM	ODD TO	EVEN FROM	EVEN TO
+++	BURLESON RD	7021	7053	-	-
+++	MC KINNEY FALLS PKWY	-	-	4806	4832

+++ Only the property was annexed. The ROW was not annexed.

Subdivisions affected by Annexation:

No Subdivisions affected by this annexation.

**This information has been provided by the City of Austin Geospatial Data Maintenance. No warranty is made by the City regarding its accuracy or completeness.

Annexation information:

Andrei Lubomudrov
512-974-7659

Addressing information:

Geospatial Data Maintenance
addressing@austintexas.gov
512-974-2797