

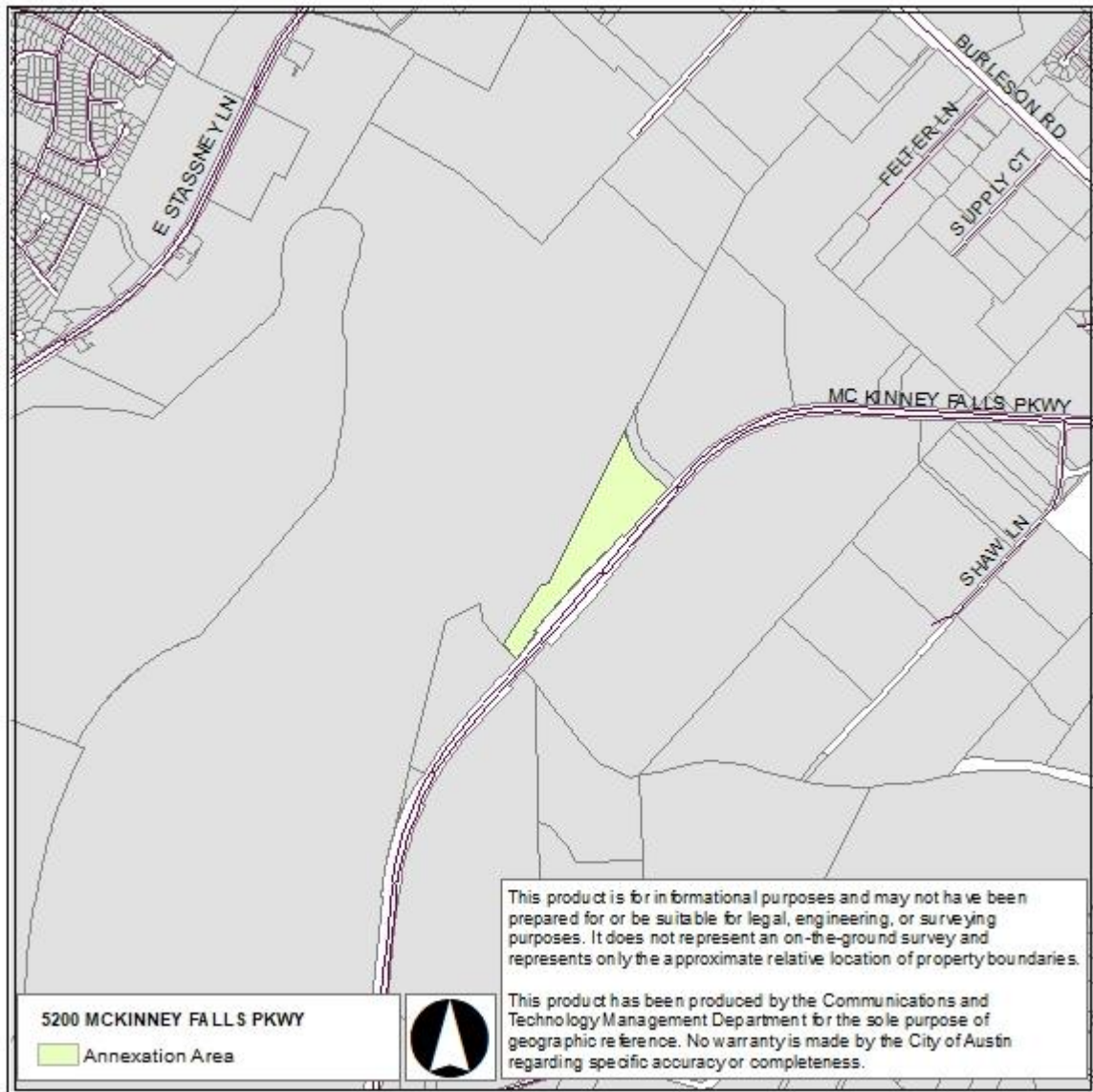


*Communications and Technology Management  
Geospatial Data Maintenance*

**5200 MCKINNEY FALLS PKWY**

Case Number: C7A-2021-0002  
Ordinance: 20210603-083  
Effective: June 14, 2021  
**FULL PURPOSE ANNEXATION**

**RESPONSE AREAS**  
APD RA: FRANK 6  
AFD RA: 00-3507  
EMS RA: SOUTH 3308



**Street Ranges affected by Annexation:**

NOTES	STREET NAME	ODD FROM	ODD TO	EVEN FROM	EVEN TO
+++	N FM 620 RD	-	-	5200	5224
+++	N FM 620 RD	-	-	5300	5324

+++ Only the property was annexed.

**Subdivisions affected by Annexation:**

No Subdivisions affected by this annexation.

\*\*This information has been provided by the City of Austin Geospatial Data Maintenance. No warranty is made by the City regarding its accuracy or completeness.

**Annexation information:**

Andrei Lubomudrov  
512-974-7659

**Addressing information:**

Geospatial Data Maintenance  
addressing@austintexas.gov  
512-974-2797