

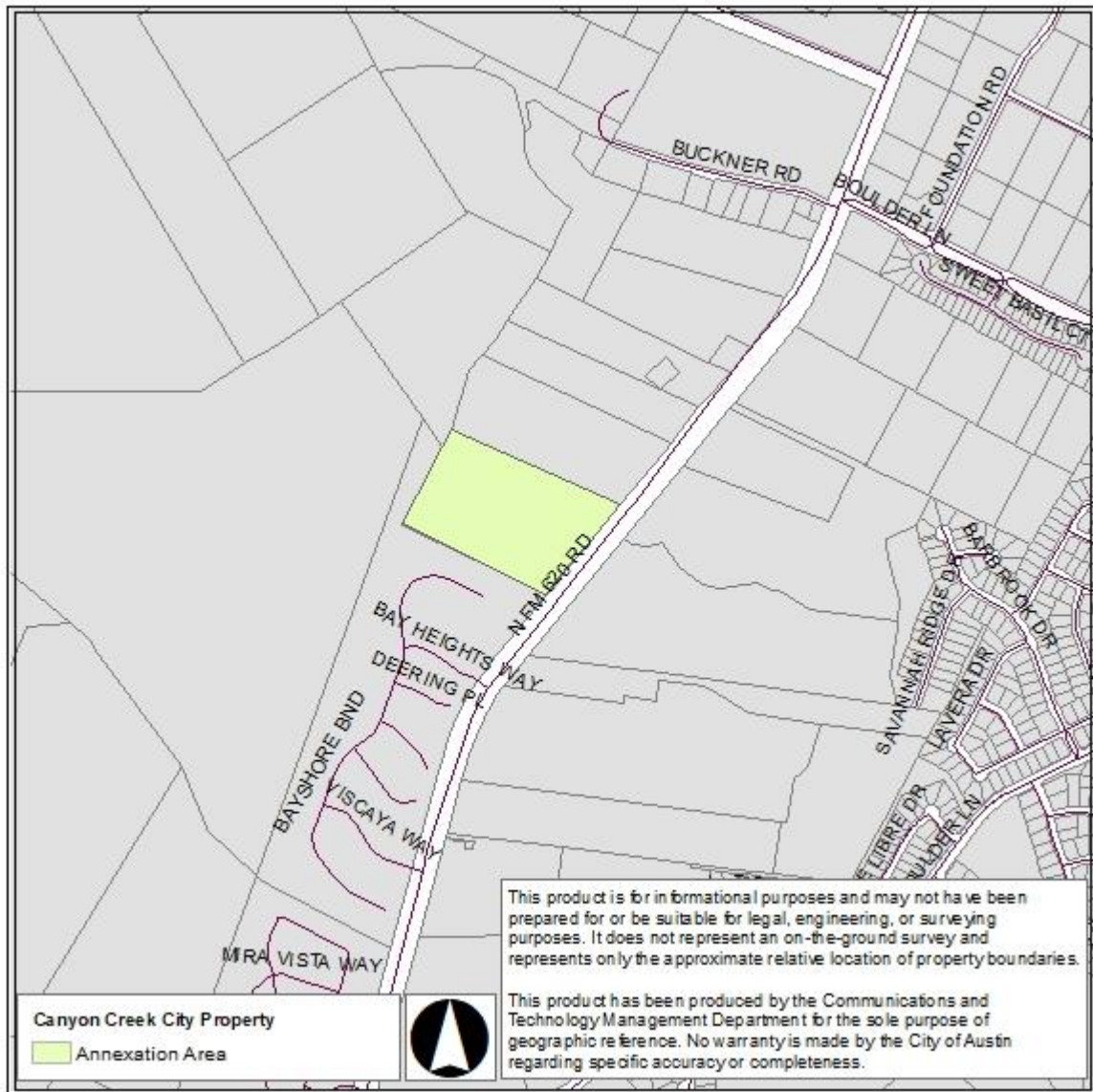


Communications and Technology Management
Geospatial Data Maintenance

CANYON CREEK CITY PROPERTY

Case Number: C7A_2022_0001
Ordinance: 20220324-066
Effective: April 4, 2022
FULL PURPOSE ANNEXATION

RESPONSE AREAS
APD RA: ADAM 8
AFD RA: 00-3906
EMS RA: NORTH 3310



Street Ranges affected by Annexation:

NOTES	STREET NAME	ODD FROM	ODD TO	EVEN FROM	EVEN TO
+++	N FM 620 RD	-	-	9804	9816

+++ Only the property was annexed.

Subdivisions affected by Annexation:

No Subdivisions affected by this annexation.

**This information has been provided by the City of Austin Geospatial Data Maintenance. No warranty is made by the City regarding its accuracy or completeness.

Annexation information:

Andrei Lubomudrov
512-974-7659

Addressing information:

Geospatial Data Maintenance
addressing@austintexas.gov
512-974-2797