

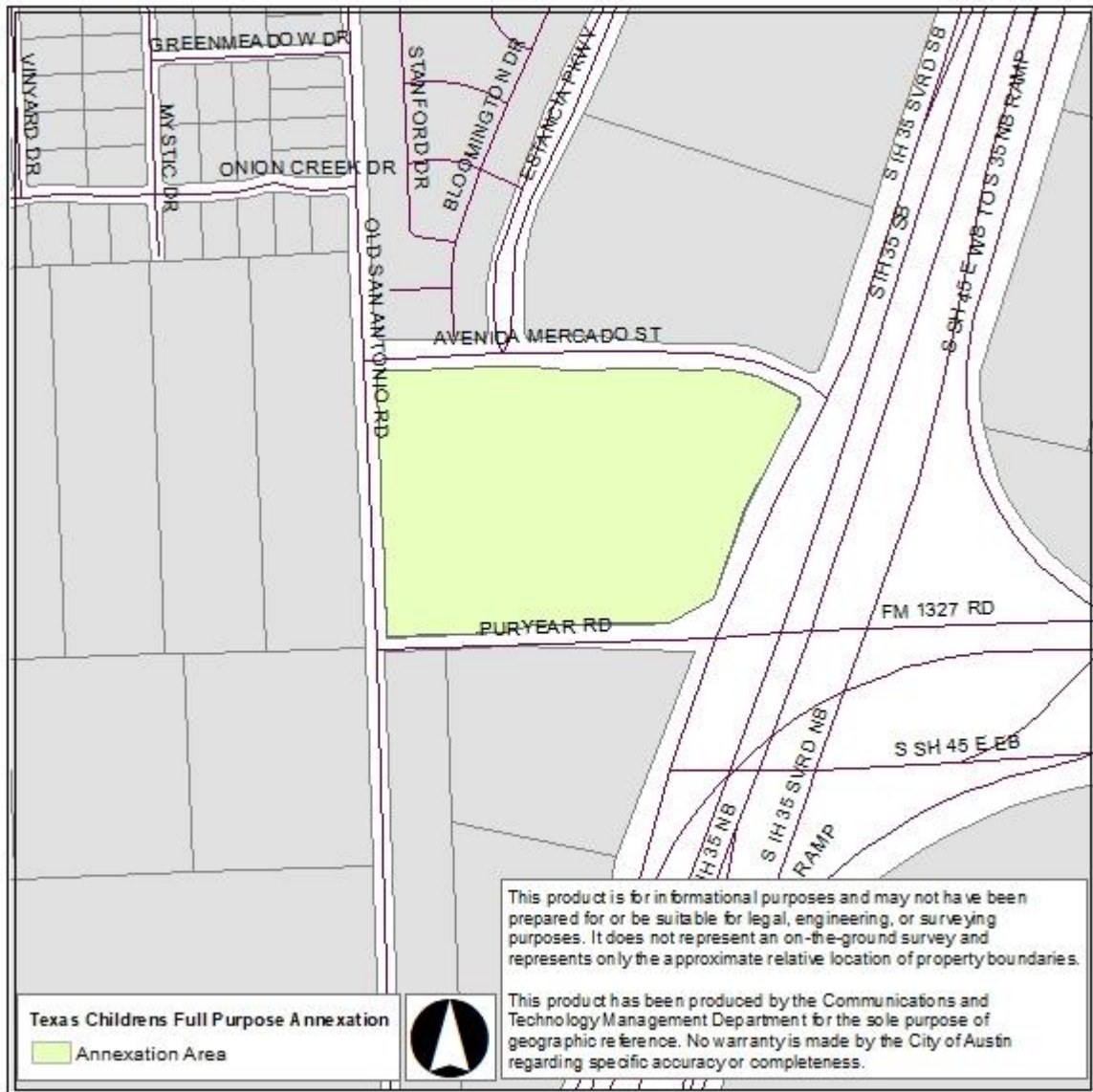


Communications and Technology Management  
Geospatial Data Maintenance

### TEXAS CHILDRENS FULL PURPOSE ANNEXATION

Case Number: C7a\_2022\_0003  
Ordinance: 20220421-032  
Effective: May 2, 2022  
**FULL PURPOSE ANNEXATION**

**RESPONSE AREAS**  
APD RA: FRANK 7  
AFD RA: 00-4908  
EMS RA: SOUTH 3308



**Street Ranges affected by Annexation:**

NOTES	STREET NAME	ODD FROM	ODD TO	EVEN FROM	EVEN TO
+++	OLD SAN ANTONIO RD	13201	13221	-	-
+++	AVENIDA MERCADO ST	901	927	-	-
+++	AVENIDA MERCADO ST	1001	1125	-	-
+++	PURYEAR RD	-	-	100	220
+++	S IH 35 SVRD SB	-	-	13000	13022

+++ Only the property was annexed. The ROW was not annexed.

**Subdivisions affected by Annexation:**

No Subdivisions affected by this annexation.

\*\*This information has been provided by the City of Austin Geospatial Data Maintenance. No warranty is made by the City regarding its accuracy or completeness.

**Annexation information:**

Andrei Lubomudrov  
512-974-7659

**Addressing information:**

Geospatial Data Maintenance  
addressing@austintexas.gov  
512-974-2797