

THANK YOU



Thank you for your interest in our training. We ask that you kindly refrain from using, reproducing, or distributing any part of this presentation without our consent. If you would like to use any material, please contact us for permission. Thank you for your understanding.

Contact: HSEMCommunications@austintexas.gov

**The scenarios shown are made for demonstration purposes only and do not reflect real events.*

Wildfire Preparedness & Evacuation Planning

City Park Road Neighborhood Corridor
October 30, 2025



Mitigation and Prevention

- What you can do
- What the City is doing

Communication Resources

- What you can do
- What the City is doing

Sheltering and Recovery

- Short-Term Resources
- Long-Term Recovery

Evacuation Scenario

- City Park Road area scenario

Agenda

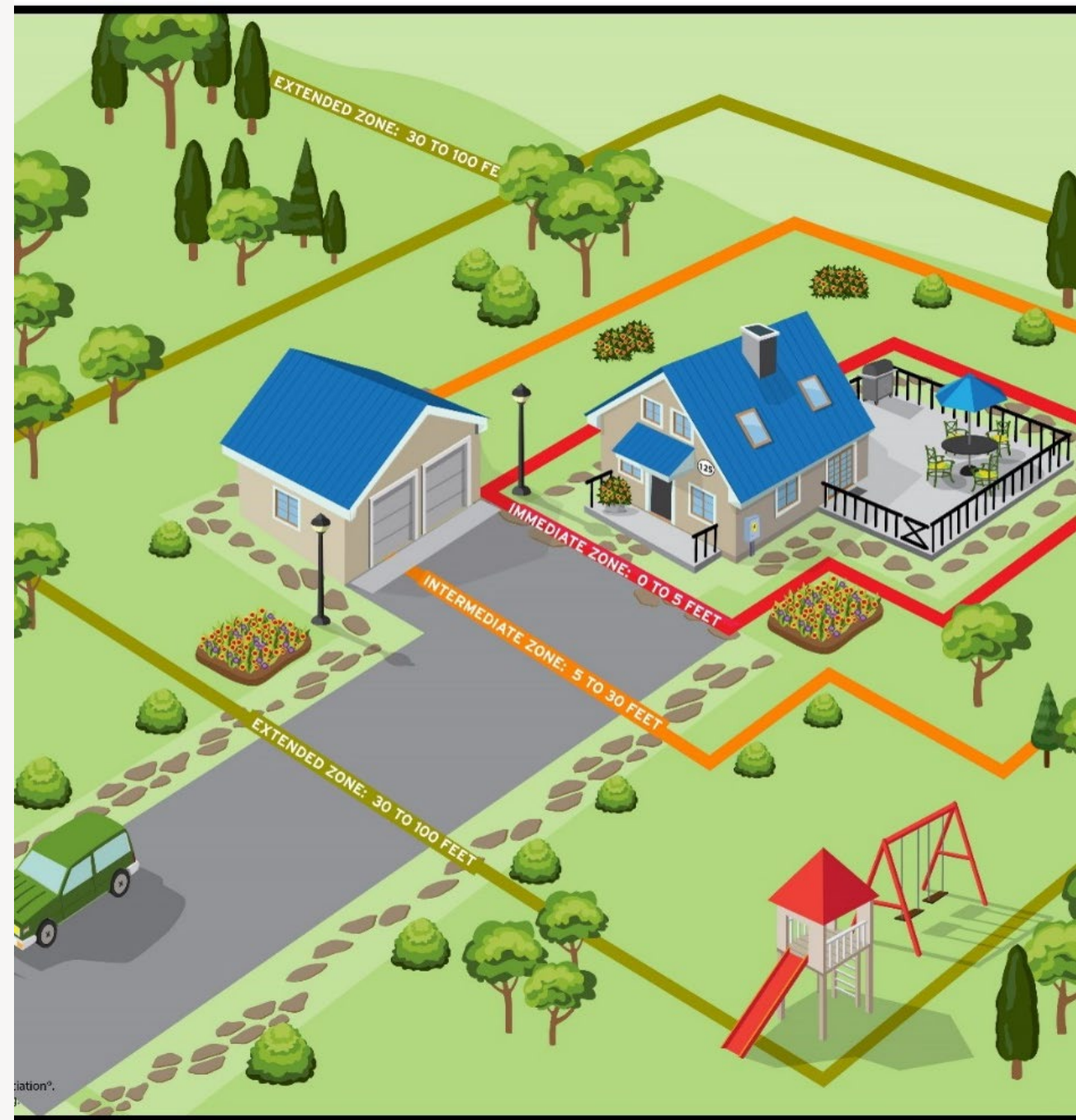
Mitigation and Prevention

Structure Ignition Zone Evaluation (SIZE)



Structure Ignition Zone

1. Immediate Zone 😱
 - 0-5 feet from home
2. Intermediate Zone 😞
 - 5-30 feet from home
3. Extended Zone 😊
 - 30-100 feet from home or to the property line



To schedule a **SIZE** for your home

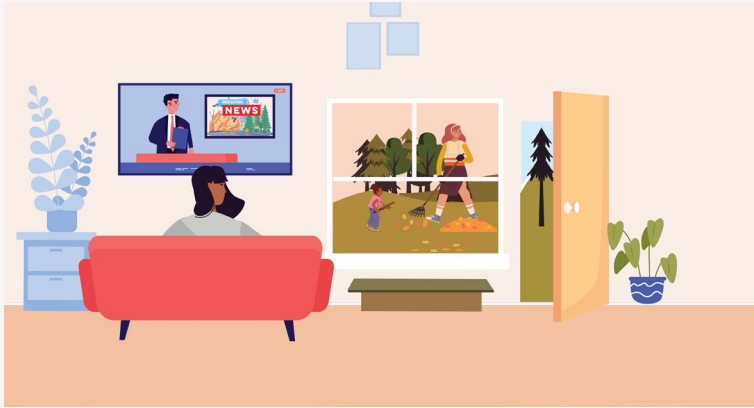


- Call 311 or use 311 app
- Email firewildfire@austintexas.gov
- Fill out request through QR code
- Visit Austin Fire's Wildfire HUB [ATXwildfirehub.com](https://www.atxwildfirehub.com)



1. *Hover phone camera over QR code*
2. *Click yellow link that pops up*

Protective Action Strategy: Ready, Set, Go!



Ready

- Create a plan for people and pets & review with your family
- Harden your home against embers
- Request a SIZE from the Wildfire Division



Set

- Stay aware by signing up for alerts, monitoring fire conditions/NFDRS, getting ready to evacuate if needed
- Review your plan and prepare your family



Go!

- Grab your go-kit, account for every person & pet, and leave!
- If you need extra time to evacuate, consider leaving during "Set" phase

Protective Action Strategy: Ready, Set, Go!



Mitigation and Prevention: What the City is Doing



Protective Action Strategy: SFACTS is a public safety decision making strategy

- Protective decisions guided by SFACTS:
 - Survivability (Can people survive here)
 - Forecast (Fire/ Flood/ Haz Mat)
 - Access (Is the evacuation route suitable)
 - Construction (Is the structure suitable for sheltering)
 - Time (How much time do you have before impact)
 - Stay/Go (Shelter in Place or Evacuate)
- Decisions based on real-time field data & interagency coordination
- Protective actions include:
 - Shelter-in-place
 - Evacuation Warning
 - Evacuation Order
- Only Mayor, County Judge, or Governor may issue official evacuation orders

Mitigation and Prevention: New Plans

All-Hazards Protective Action Plan

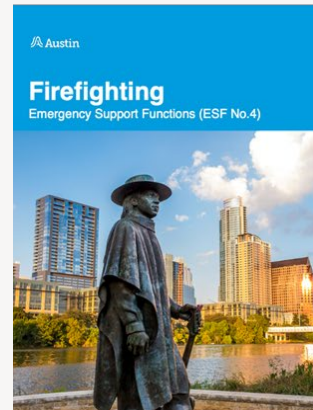
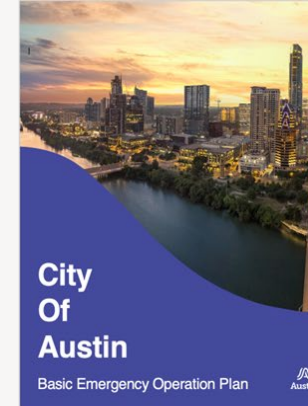
- Outlines Austin's strategy for managing any type of protective action during
 - Floods
 - Wildfires
 - All hazards

Wildfire Annex

- Explains specific fire evacuation protocols for COA

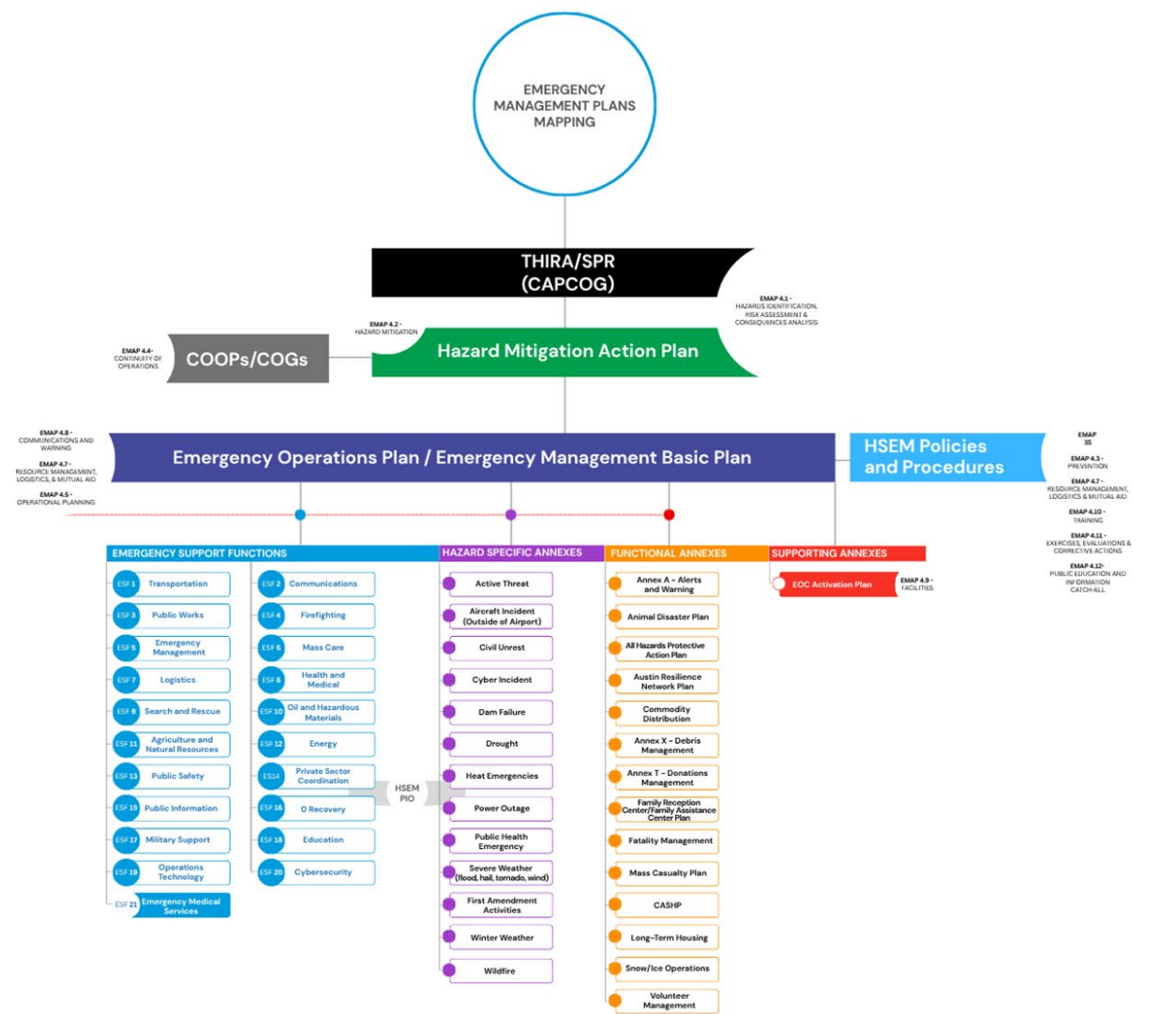
Firefighting: Emergency Support Function (ESF) No. 4

- State of Texas Requirement
- Explains who is responsible for what during a fire event



Mitigation and Prevention: New Plans

These plans fit into a larger system of the Emergency Operations Plan



Hazard Mitigation Plan



- Update plan every 5 years
- Designed to assist in mitigating risk for all threats and hazards to the City
- Plan helps to minimize or eliminate long-term risk to human life and property
- FEMA-approved hazard mitigation plan is required for multiple grant programs
 - Grants would assist in paying for projects associated with mitigation
- Public input is valuable to this process
 - First public meeting June 10
 - Next meeting Spring 2026
 - Digital Input Survey at <https://tinyurl.com/AustinHMAP>



Community Wildfire Protective Action Plan

Public Input Opportunities



- Regional Plan updated every 10 years
- Designed to assist in mitigating wildfire risk
- Virtual public meeting scheduled Nov. 19, 6:00-7:00 p.m.
 - Facilitated discussion by SWCA
 - Includes a panel of local fire practitioners
 - Q&A from the public
- 2 in-person public input meetings to be scheduled:
 - Late January 2026
 - Late February-Early March 2026
- Public Comments on draft of CWPP late March-April 2026
- Austin Area Firewise Alliance representative are a conduit for representation



Communication & Resources

Emergency Preparedness Resources: What You Can Do



Emergency preparedness training or presentation for your neighborhood, business, organization or team at ReadyCentralTexas.org



Emergency Preparedness Resources: What You Can Do



Emergency Preparedness Pop-Ups

- 3rd Wednesday of the month
- First 25 receive emergency supply starter kit
- Public Safety departments distribute information, supplies & resources
- Free to attend

Ready Together: Emergency Preparedness Training for You, Family & Neighborhood

- Quarterly emergency preparedness classroom training
- Free to attend
- Register in advance online / receive a preparedness kit

Get Ready Central Texas Emergency Preparedness Fair

- Annual event
- Free to attend / receive a preparedness kit
- Over 30 emergency preparedness partners local, state, federal

4 Steps to Emergency Preparedness

- By request for neighborhoods, businesses, associations
- Available in 14 languages

Emergency Preparedness Resources: Guides & Websites

Neighborhood Preparedness Guide

- Available in English, Spanish, Vietnamese, Simplified Chinese, Korean, Arabic
- Plan for hazards: wildfire, floods, winter storms, etc.
- Build an emergency kit
- Create a family emergency plan
- Templates for neighborhood emergency planning

Ready, Set, Go! Wildfire Action Guide

- English & Spanish

ReadyCentralTexas.org

- Digital preparedness hub

ATXWildfireHub.com

- Redesigned home for wildfire info

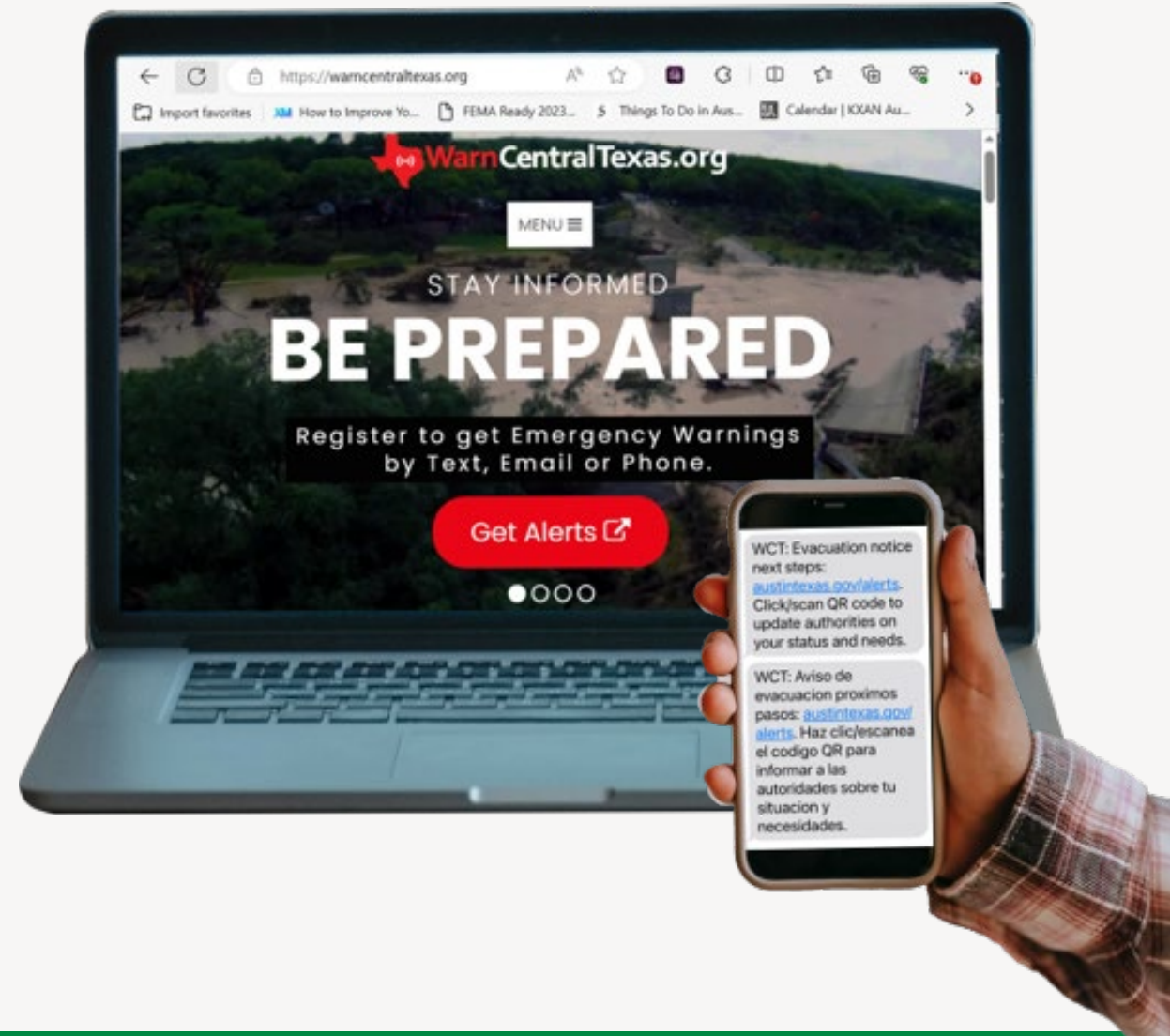


***Request emergency
preparedness training or
presentation for
neighborhood, business,
organization or team
at ReadyCentralTexas.org***

Communication Resources: What the City is doing

Communicate via trusted sources

- Warn Central Texas Emergency Alerts
 - Register to receive call, text, email alerts
 - Customize which alerts you want
 - Add multiple contacts & addresses:
 - You
 - Spouse
 - Family outside area
 - Regional notification system
- IPAWS – Integrated Public Alert Warning System
 - Geotargeted to impacted area
 - No subscription necessary
 - Must opt in on mobile device settings



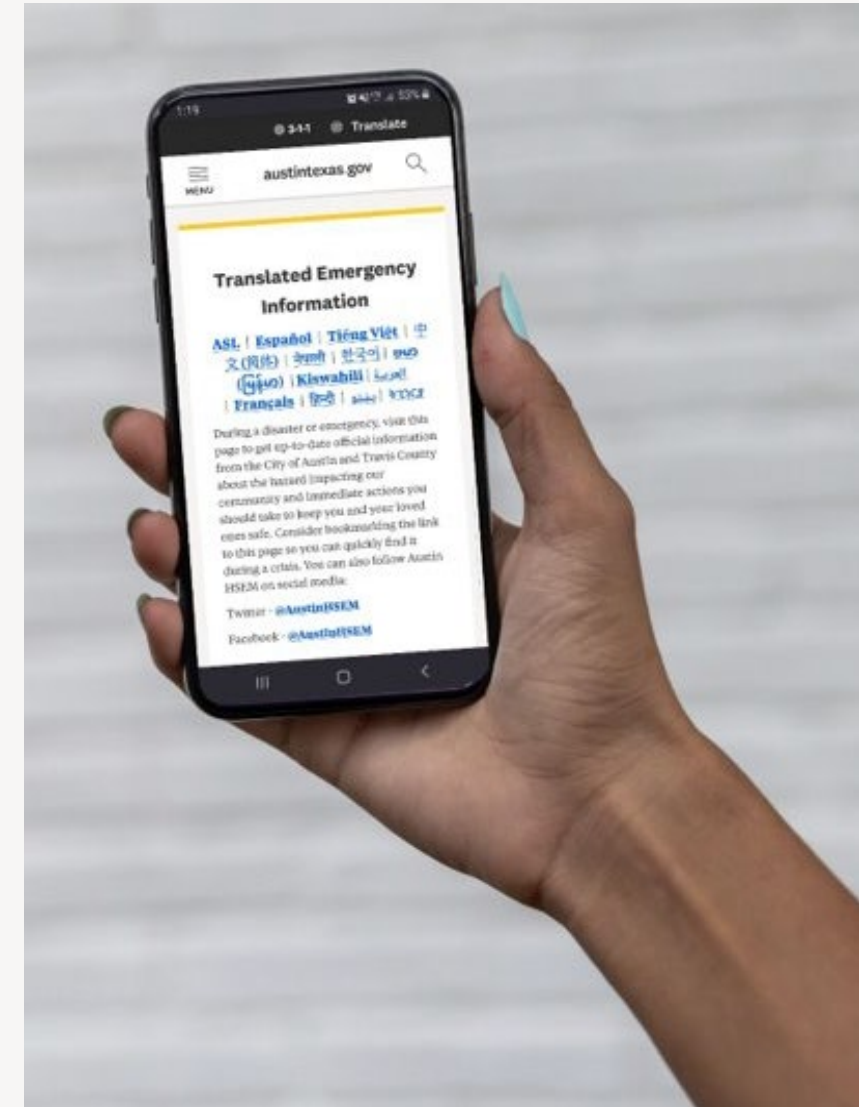
Communication Resources: What the City is doing

City Alerts Webpage: [AustinTexas.gov/alerts](https://austintexas.gov/alerts)

- Official hub for up-to-date information in 14 languages
- Provide updates on hazard impacting community, and actions you should take.
- Bookmark this page so you can easily find it when you need it.

Other Communication Methods

- Ready Central Texas Phone Application
- Social Media: FB, IG, X
- Press Conferences
- Local News
- Outreach and Engagement Events



Sheltering and Recovery

You have been evacuated, now what?


Short-Term Shelter

- Temporary Assembly Point - TAP
 - Check in for your household via QR code
 - Helps City account for impacted community members
 - Receive quick services
 - Proceed to shelter or other housing
- Short-Term Shelter Services
 - First resource will be a City facility, managed by City-staff and American Red Cross
 - Basic needs and services provided
 - Shelter facility will depend on volume of need and location
 - Additional resources or shelter options will be evaluated

Make a Basic Emergency Supply Kit

English

- Basic first aid kit, seven-day supply of medications/medical items
- Map(s) of the area
- Extra cash (suggested: \$200 in small bills)
- Spare change of clothes
- Spare car/home key
- Family and emergency contact info (phone and email)
- Pet supplies (collar, leash, tags, food, bowl)
- Copies of personal documents in water-tight bag
- 1 gallon of water per person, per day (7-day supply)
- 7-day supply of non-perishable food, can opener
- Battery-powered or hand-crank radio (NOAA Weather Radio, if possible)
- Cell phone, charger(s), flashlight, extra batteries
- Sanitation, personal hygiene items, blankets
- Wrench or plier
- Other tools or equipment you may need



Get Ready Central Texas

For more information:
readycentraltexas.org

TEMPORARY ASSEMBLY POINTS

- Provides:
 - Registration/log of evacuees on the way to safety
 - Safe **TEMPORARY** staging of evacuees before transit to shelters
- Identified/managed by Austin-Travis County EMS and Red Cross
- Uses QR code to gather contact info of evacuees & status of household + provides basic services (e.g. - emergent medical care)
- Important for assisting those without transportation or safe place to go or with access & functional needs
- Easily identifiable location that residents should be able to navigate to with minimal direction.



Evacuations for People with Access & Functional Needs + Animal Services



Evacuation procedures include care for individuals with disabilities, seniors & non-English speakers.

Coordination with hospitals, nursing homes & schools

Plans for sheltering pets & livestock; animal transport logistics included

Animal support managed through Austin Animal Services & Travis County.

Short & Long-Term Recovery Resources

Emergency Management is Coordinated at the Federal, State, and Local Levels



Federal

FEMA's mission is helping people before, during and after disasters, and their core values and goals help them achieve it.



State

TDEM carries out a comprehensive all-hazard emergency management program for the State and for assisting cities, counties, and state agencies in their emergency management programs.



Local

AEM serves as the coordinating focal point for preparedness, response, recovery, and education in any emergency or disaster that disrupts the community.

Local Recovery and How it Works

Repopulation and Damage Assessments



A Site Assessment Task Force will be established. This Task Force will conduct field assessments, identify hazards, support response and recovery in affected areas, and make recommendations for repopulation.

- Austin Fire
- Austin Police
- Austin Public Health
- Austin Transportation and Public Works
- Austin Developmental Services
- Austin Resource Recovery
- Austin Water
- Austin Energy
- Austin Watershed Protection
- CapMetro

Local Recovery and How it Works

Multi Agency Resource Centers (MARC)s



Centralized support for individuals, families, and communities after a disaster

- One-stop shop for disaster assistance
- Quick access to resources, minimize travel
- Coordinate agencies to maximize support
- Transition to long-term recovery



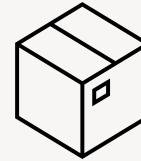
Housing Assistance



Casework guidance
& referrals



Emotional & mental
health support



Bulk Supplies
Distribution



Access to local and
state resources

Federal Recovery and How it Works



FEMA Recovery Resources

- **Public Assistance:** supplemental grants for debris removal, emergency protective measures, and the restoration of disaster-damaged infrastructure **for government**
- **Individual & Household Assistance:** financial assistance and direct services to eligible individuals and households affected by a disaster, who have **uninsured or underinsured** necessary expenses and serious needs **for residents**
- **Business & Individual Assistance:** provides **low-interest disaster loans** for businesses and residents

Damage Assessments and Thresholds

- The threshold for the State of Texas to qualify for Public Assistance is \$53.6 million in uninsured, qualifying disaster damages.
- The threshold for Travis County to qualify for Public Assistance is \$5.7 million in damages reported.
- These thresholds are based on the annual consumer price index and the last official census population.
- Jurisdictions are reimbursed a percentage, or portion, of total eligible costs.

State Recovery and How it Works

- State Recovery Resources from Texas Division of Emergency Management (TDEM)
 - Individual State of Texas Assessment Tool (iSTAT)
 - Submit images of damage through iSTAT
 - Helps local & state officials determine if assistance thresholds are met
 - Not reporting damage could mean no federal \$\$ is available



SUBMIT DAMAGE:
Scan QR code or visit
damage.tdem.texas.gov

How Does iSTAT Work?

Let's walk through the **iSTAT** survey

100m texas.gov



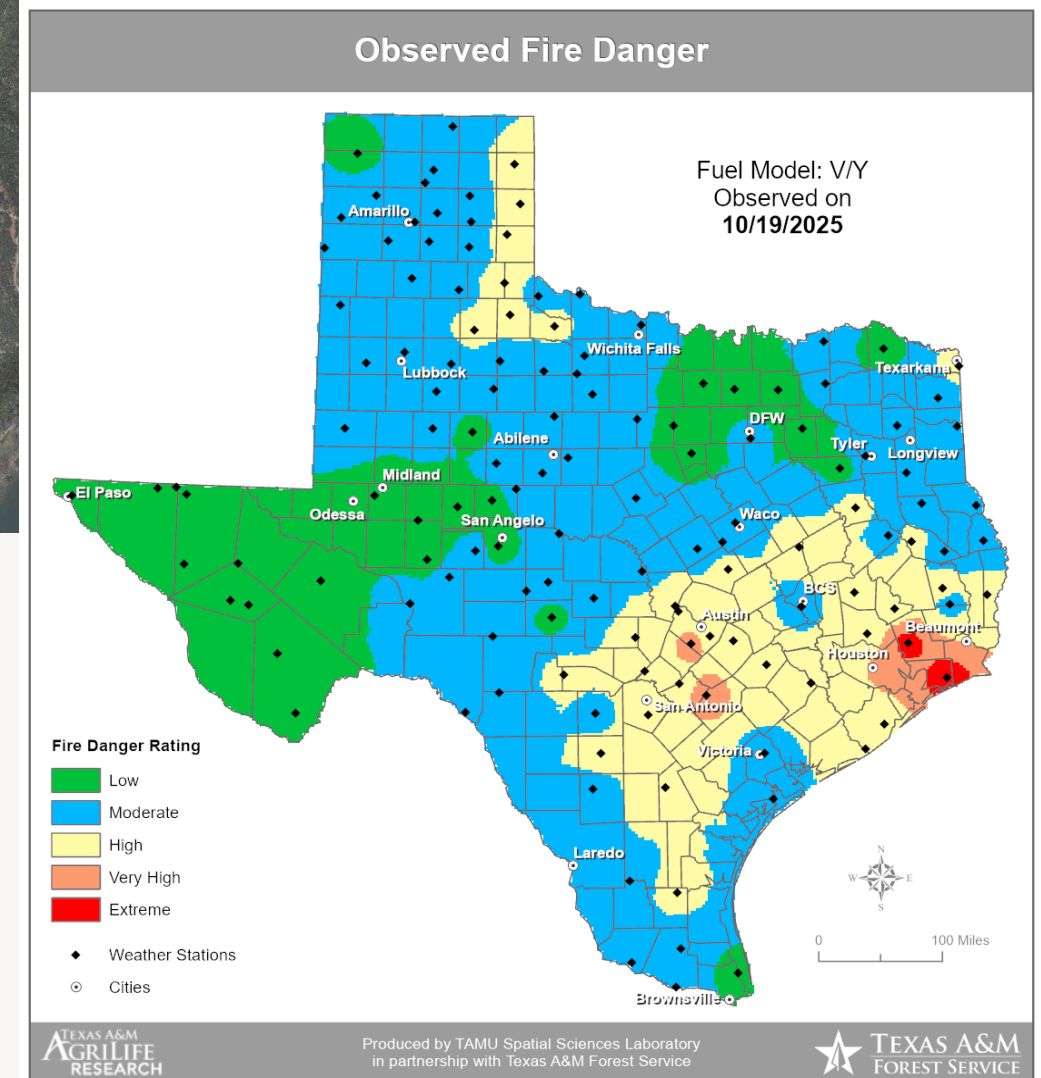
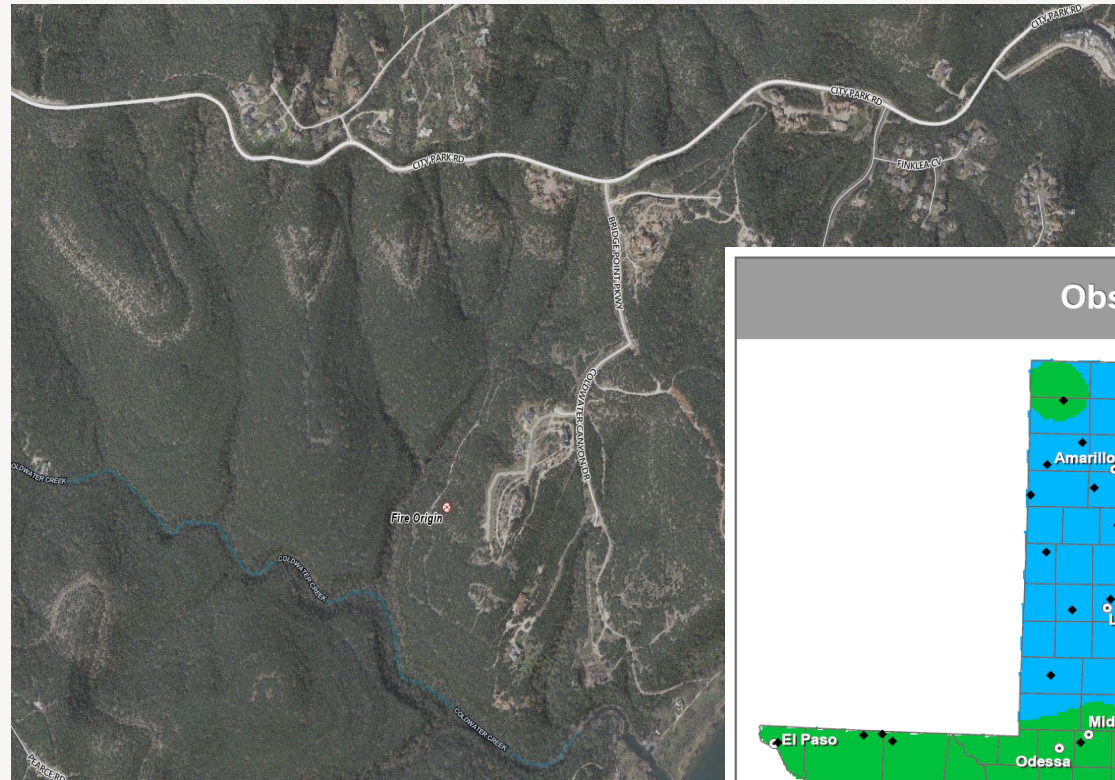
Evacuation Scenarios

**The scenarios shown are made for demonstration purposes only and do not reflect real events.*

Weather

- Temp 101F
- RH 20%
- Winds South at 8 MPH

NFDRS: High/ Very High



0 hour

Initial Dispatch:

- Engine 47 dispatched to a smoke investigation.

Initial Size-Up:

- Engine 47 observes smoke deep within a wooded area with limited access for apparatus.

Actions Taken:

- Engine 47 requests additional resources (upgrades to Brush Truck and 1 Battalion Chief).
- Crew deploys with hand tools and backpack pumps to scout the fire and assess spread potential.



30 minutes

Initial Discovery:

- Engine 47 locates the fire and reports it at 1 acre in a draw at the base of a canyon.

Incident Command Actions:

- Battalion 3 arrives on scene, assumes Command, and requests a full Brush Alarm.
- **Evacuation Order** requested for structures along Quiet Mountain Cove.
 - 8 Residential Structures
 - Estimated Population: 21
 - This Order triggers the Dispatch notification through WCT
- One Type 1 Engine Strike Team (ST01) requested for structure defense and evacuation support on Quiet Mountain Cove.
- STAR Flight requested for aerial reconnaissance and suppression support.
- Texas A&M Forest Service (TAMFS) requested for additional ground and aviation resources.

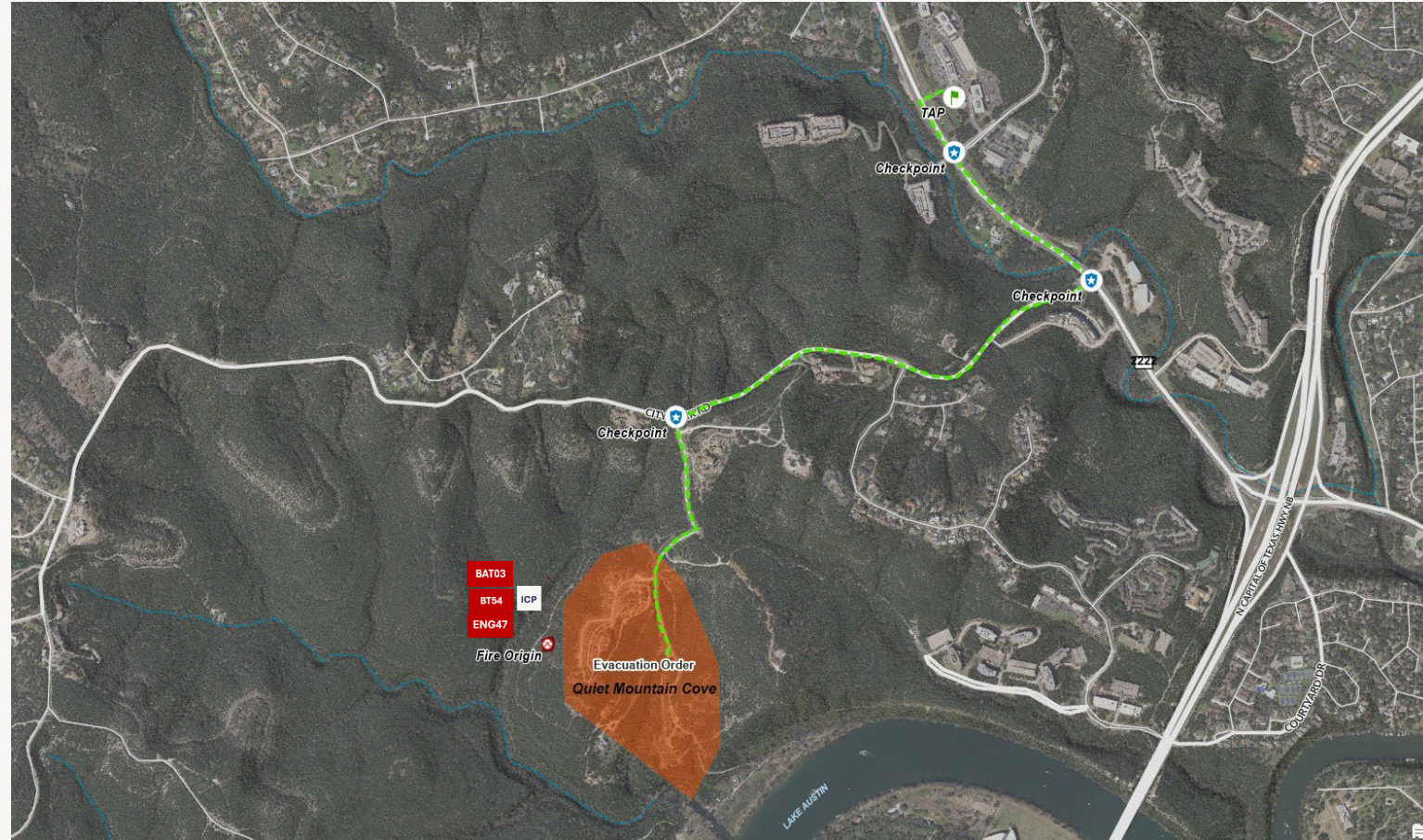
AEM: Duty Officer may be notified; notify AEM leadership and AEM PIO.

APD:

- APD officers deployed to the Incident Command Post (ICP) to assume the Evacuation Branch Director position.
- IC is requesting a roadblock to be established at Bridge Point Parkway to facilitate outbound traffic and restrict entry into the evacuation zone.

EMS

- Temporary Assembly Point (TAP) activation requested at Jester Estates Shopping Center.
- EMS Supervisor reports to Command Post



30 minutes

Initial Discovery:

- Engine 47 locates the fire and reports it at 1 acre in a draw at the base of a canyon.

Incident Command Actions:

- Battalion 3 arrives on scene, assumes Command, and requests a full Brush Alarm.
- **Evacuation Order** requested for structures along Quiet Mountain Cove.
 - 8 Residential Structures
 - Estimated Population: 21
 - This Order triggers the Dispatch notification through WCT
- One Type 1 Engine Strike Team (ST01) requested for structure defense and evacuation support on Quiet Mountain Cove.
- STAR Flight requested for aerial reconnaissance and suppression support.
- Texas A&M Forest Service (TAMFS) requested for additional ground and aviation resources.

AEM: Dispatch notifies AEM PIO of evacuation order. Triggers follow-up communications.

Law Enforcement Coordination (APD):

- APD officers deployed to the Incident Command Post (ICP) to assume the Evacuation Branch Director position.
- IC is requesting a roadblock to be established at Bridge Point Parkway to facilitate outbound traffic and restrict entry into the evacuation zone.

EMS

- Temporary Assembly Point (TAP) activation requested at Jester Estates Shopping Center.



1 hour

Fire Status:

- Fire estimated at 3.5 acres and burning rapidly upslope.
- On-scene resources are unable to contain the fire due to difficulty of access.

Incident Command (IC) Actions:

- Evacuation Order** issued for Westcliff.
 - 59 Residential Structures, Estimated Population: 153
- Two Type 1 Engine Strike Teams (ST02 and ST03) requested for structure protection and evacuation support in Westcliff.
- Evacuation Warning** requested for Long Canyon.
 - 410 Residential Structures, Estimated Population: 1066

AEM: EOC may begin activation. Duty Officer will be covering coordination of additional resource request until EOC is operational.

Resource Order Updates:

- Texas A&M Forest Service (TFS) Resource Coordinator arrived on scene.
- Dozer Task Forces:
 - From Smithville: ETA 1 hour, From Fredericksburg: ETA 2 hours
- Aviation Assets:
 - Three SEATs (Single Engine Air Tankers) available in Fredericksburg, 45-minute prep and flight time.

APD:

- Checkpoint repositioned to Westminster Glen Avenue to prioritize a phased evacuation of Westcliff residents.
- Vehicle access restricted at FM 2222 and City Park Road.
- APD officer assigned to control TAP access at Jester Boulevard.

EMS:

- Advises the Evacuation Branch Manager the TAP is active and processing evacuees.
- WPU?



1.5 hours

Fire Status:

- 15.6 acres and burning uphill towards City Park Rd.

Incident Command Actions:

- ICP moved to 5805 City Park Rd.

Evacuation Status:

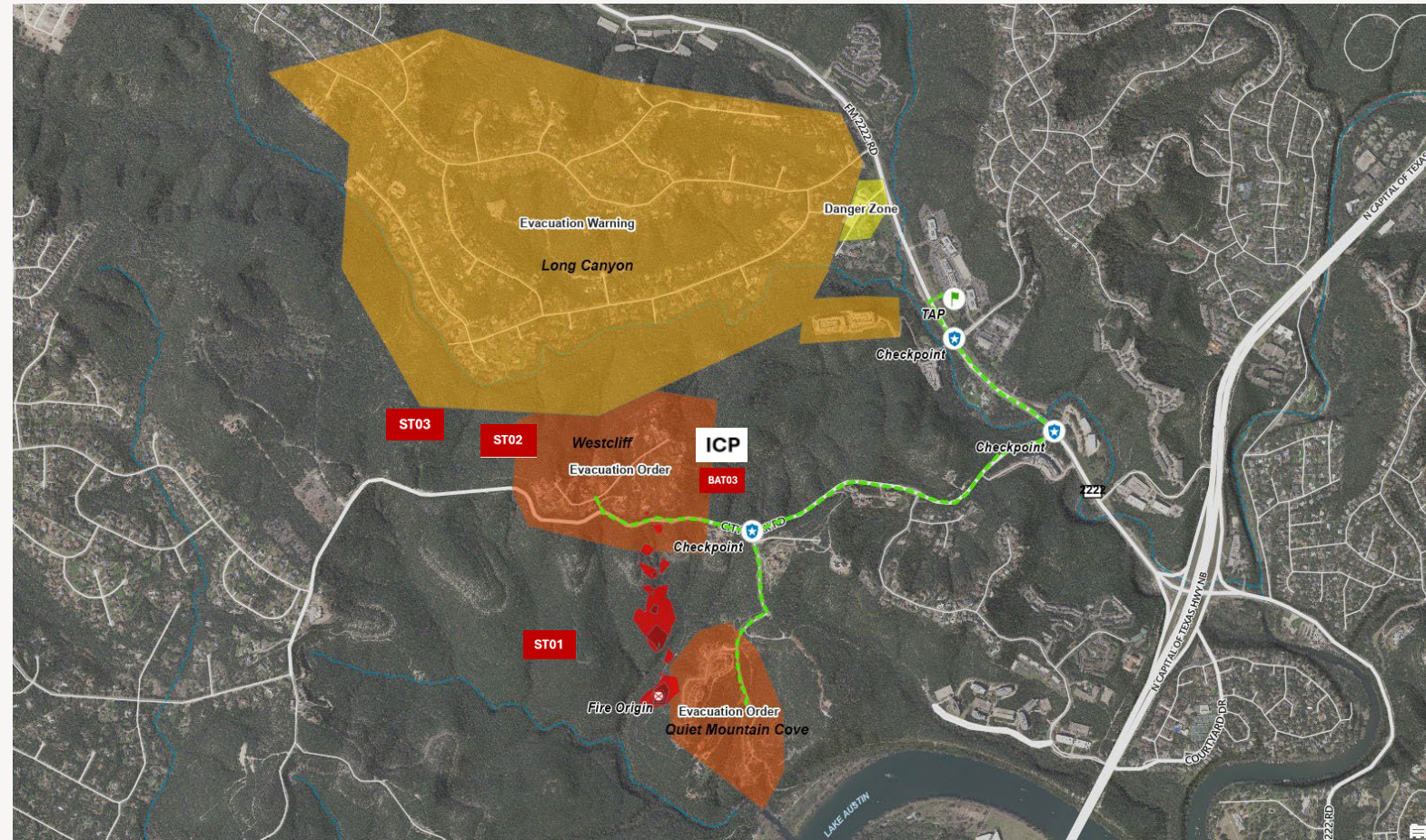
- Evacuation of Westcliff is complete.
- Several homeowners are refusing to evacuate despite the order.
- Fire crews inform these residents that if conditions deteriorate and crews must withdraw due to fire behavior, no rescue operations will be possible.

Operational Actions:

- Fire crews are conducting Prep and Defend operations around structures in Westcliff and Quiet Mountain Cove.
- Aircraft are engaging the flanks of the fire.
- TFS Crews are cutting Dozer lines to access the fire where topography allows.

APD

- Air1 arrives on scene providing ariel observation of the incident and notifying the IC of any changes in fire behavior.



2 hours

Fire Status:

- 42.7 acres and making a push up a drainage on the left flank.

Evacuation Order:

- Incident Command (IC) has requested sections of Westminster Glen along City Park Road to be evacuated.
- 72 Residential Structures, Estimated Population: 187
- Evacuation Route: Evacuees should travel to the Jester Temporary Assembly Point (TAP) via Big View Dr. and River Place Blvd.

EMS

- Initiation of secondary TAP for Westminster Glen evacuees

Evacuation Warning:

- The remainder of Westminster Glen is under an Evacuation Warning.
- 520 Residential Structures, Estimated Population: 1352
- Residents not under the Evacuation Order are asked to remain in place, unless they require additional time to evacuate.

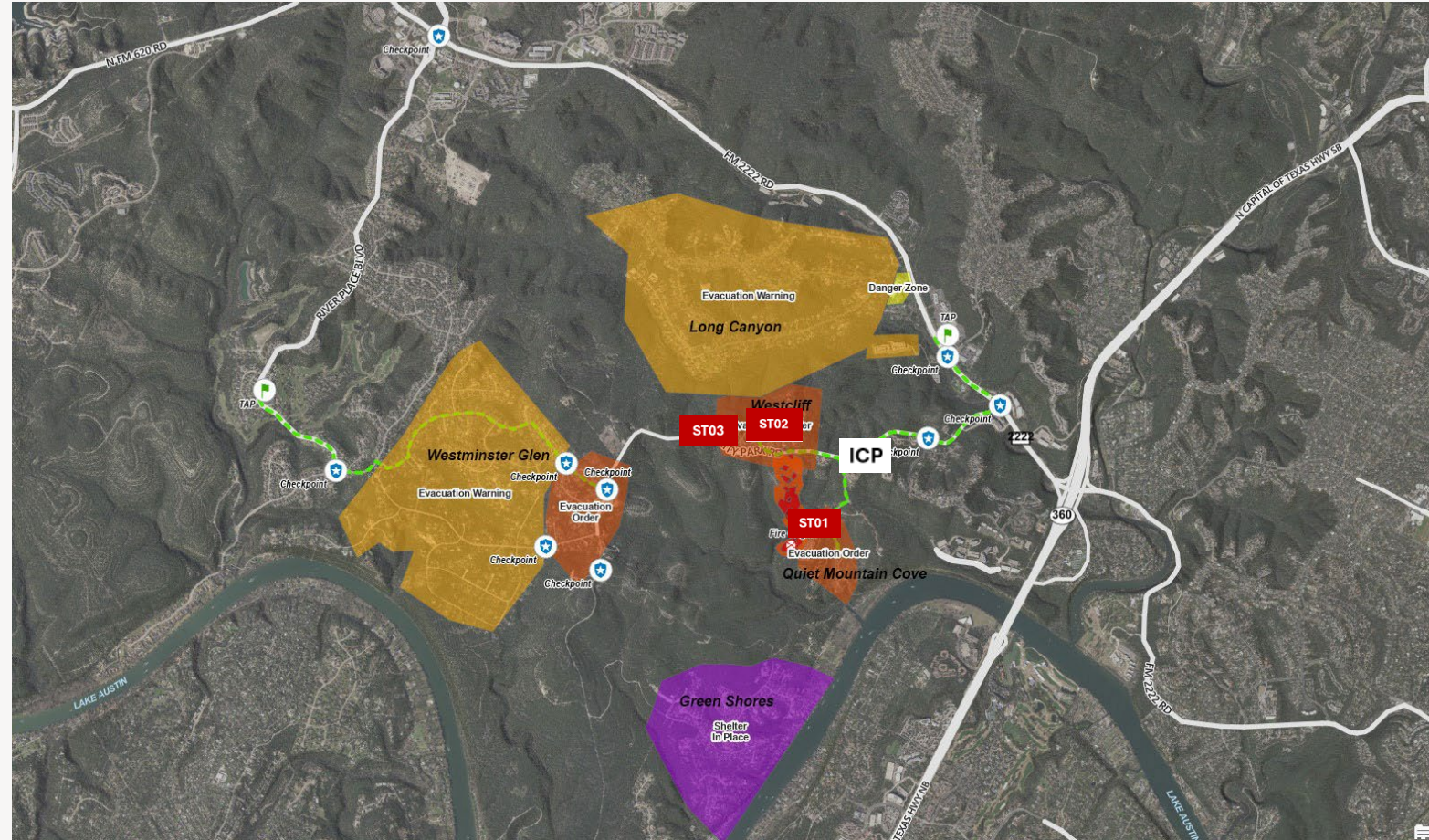
Shelter-In-Place:

- Residents of Green Shores are advised to Shelter-in-Place.
- 345 Residential Structures, Estimated Population: 897

APD

- Evacuation Branch Manager continues to monitor route and control traffic by adjusting APD resources in response any identified needs.

AEM: EOC fully operational. DO would be reallocated to the EOC and / or field liaison role. Future operations for shelter, MARC, repopulation, damage assessment, etc., and resource planning underway.



3 hours

Fire Status:

- 93.4 acres. Fire has jumped City Park Rd. and spot fires are reported in and around structures in Westcliff.

Fire Suppression Operations:

- Supported by aircraft, TAMFS dozers and Fire crews, hose lays are being established along both flanks of the fire.
- Crews are making good progress containing the wildfire and reinforcing control lines.

Westcliff:

- Structural suppression crews are holding the fire at the neighborhood boundary.
- Two outbuildings are fully involved.
- Several homes have minor damage to decks and roofs.

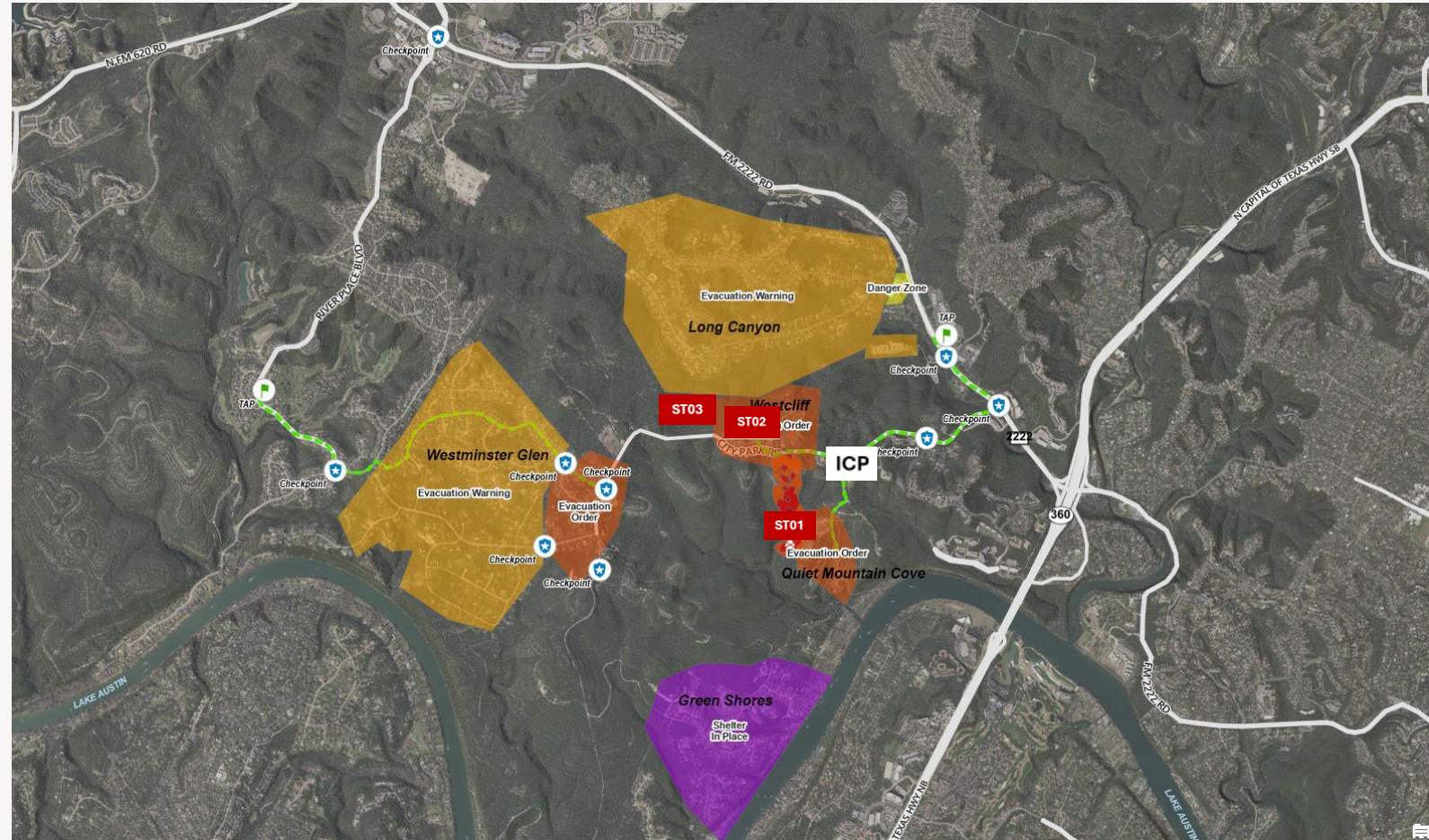
Quiet Mountain:

- Structural suppression crews have stopped the fire's forward progress.
- No property loss and no structural damage reported.

Evacuations:

APD:

- Evacuation Branch Manager reports that designated structures in Westminster Glen have completed evacuation.
- Due to limited access via Big View Drive, the Evacuation Branch has determined that residents under an evacuation warning who voluntarily leave will not be permitted to return until the area is declared safe.



Incident Summary at Three-hour Mark



Incident Summary:

- Engine 47 dispatched to smoke investigation in wooded area west of Quiet Mountain Cv. located fire deep in the trees with limited access.
- Battalion 3 arrived, assumed IC, requested a full Brush Alarm, STAR Flight, TAMFS support, and a Type 1 Engine Strike Team for structure defense and evacuation.
- **Evacuation Order** issued for Quiet Mountain Cove – 8 residential structures with an estimated population of 21.
- TAP established at Jester Estates Shopping Center.

Escalation:

- Fire estimated at 1 acre and uncontained on arrival.
- **Evacuation Orders** expanded to Westcliff; **Evacuation Warning** issued for Long Canyon; Green Shores is directed to **Shelter-In-Place**.
- TAMFS Dozer Task Forces responding from Smithville and Fredericksburg.
- Three SEATs available in Fredericksburg.
- APD established roadblocks at Bridge Point Pkwy., FM 2222, and City Park Rd., and relocated checkpoints to Westminster Glen Ave. to prioritize phased evacuations.

Evacuation Operations:

- Fire pushed up drainage on left flank, prompting evacuation of Westminster Glen along City Park Rd.
- Evacuees directed to Jester TAP via Big View Dr and River Place Blvd.
- Westcliff evacuation completed, though some residents refused to leave; crews warned no rescue possible if fire conditions worsened.
- Total Residences Impacted by Evacuation Orders: 139
- Estimated Number of Residents Impacted by Evacuation Orders: 361

Fireground Operations:

- Supported by aircraft, TAMFS dozers, and TIFMAS crews, hose lays were completed on both flanks.
- Westcliff: Fire held at the neighborhood boundary; two outbuildings lost, minor damage to several homes.
- Coldwater: Fire stopped with no property loss or structural damage.
- Westminster Glen evacuations complete; residents under warning who leave cannot reenter until area is safe.

Learn More



ATXWildfireHub.com
www.ReadyCentralTexas.org



Questions?

Contact

hsemcommunications@austintexas.gov