

Travis County Influenza Surveillance



Summary – Season 2017-2018 (as of February 20, 2018).

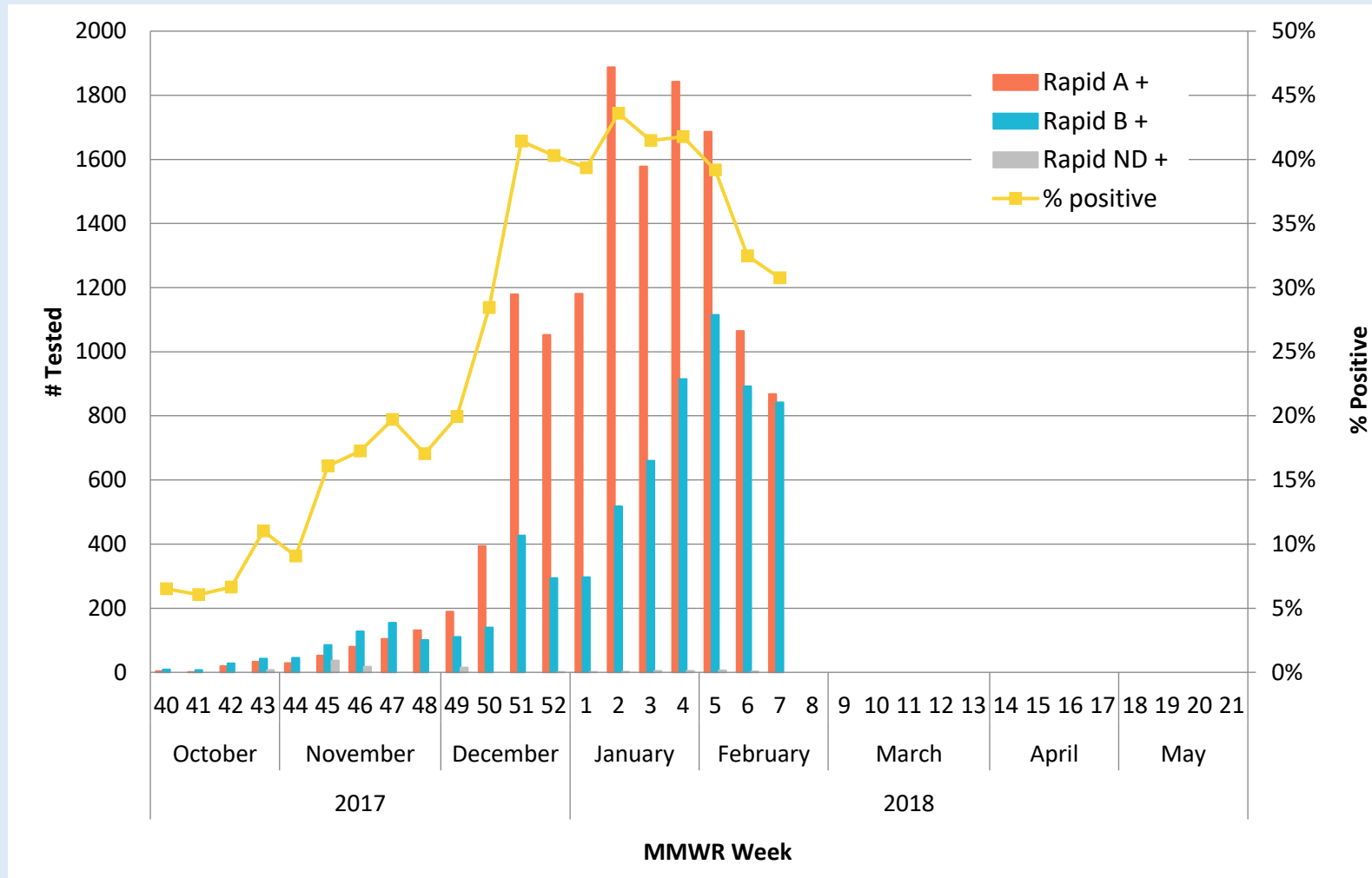
- Although activity has slightly decreased over the past week, influenza activity remains high in Travis County.
- The percentage of specimens positive by rapid antigen tests for influenza reported by hospital and public health laboratories in Travis County is 30.8%* (as of MMWR week 7).
- There have been 26 outbreaks reported among long term care facilities.
- Thirty nine influenza-associated deaths have been reported among Travis County residents, no influenza-associated pediatric deaths have been reported.
- As of MMWR week 6, statewide the number of patient visits due to Influenza like Illness has marginally decreased (ILI) is around 13%. (Figure 2).
- In Texas, B virus is the predominate strain circulating; A(H3N2), and A(H1N1) are co-circulating (Figure 3).
- In addition to flu, other respiratory viruses - especially rhinovirus/enterovirus - were detected in Texas during epidemiological week 6.
- According to CDC, during week 6, influenza remained elevated in the United States. This season Influenza Like Illness (ILI) have reached 7.7%; the same level recorded since at the peak of the 2009 H1N1 pandemic.
- Flu vaccination is always recommended, even if you have already been sick, and early antiviral treatment for people who are very ill or those who have influenza and are at high risk of complications.
- PCR testing is performed for specimens referred by area sentinel Influenza surveillance reporters. Providers interested in becoming sentinel providers may call the Austin Public Health - Epidemiology and Disease Surveillance Unit at (512) 972-5555.

Travis County Influenza Surveillance



*Some influenza reporters are pending as of 02/12/2018 3 pm.

Figure 1. Number Tested and Percent Positive Rapid Influenza tests in Travis County by week, 2017-2018 Influenza Season*



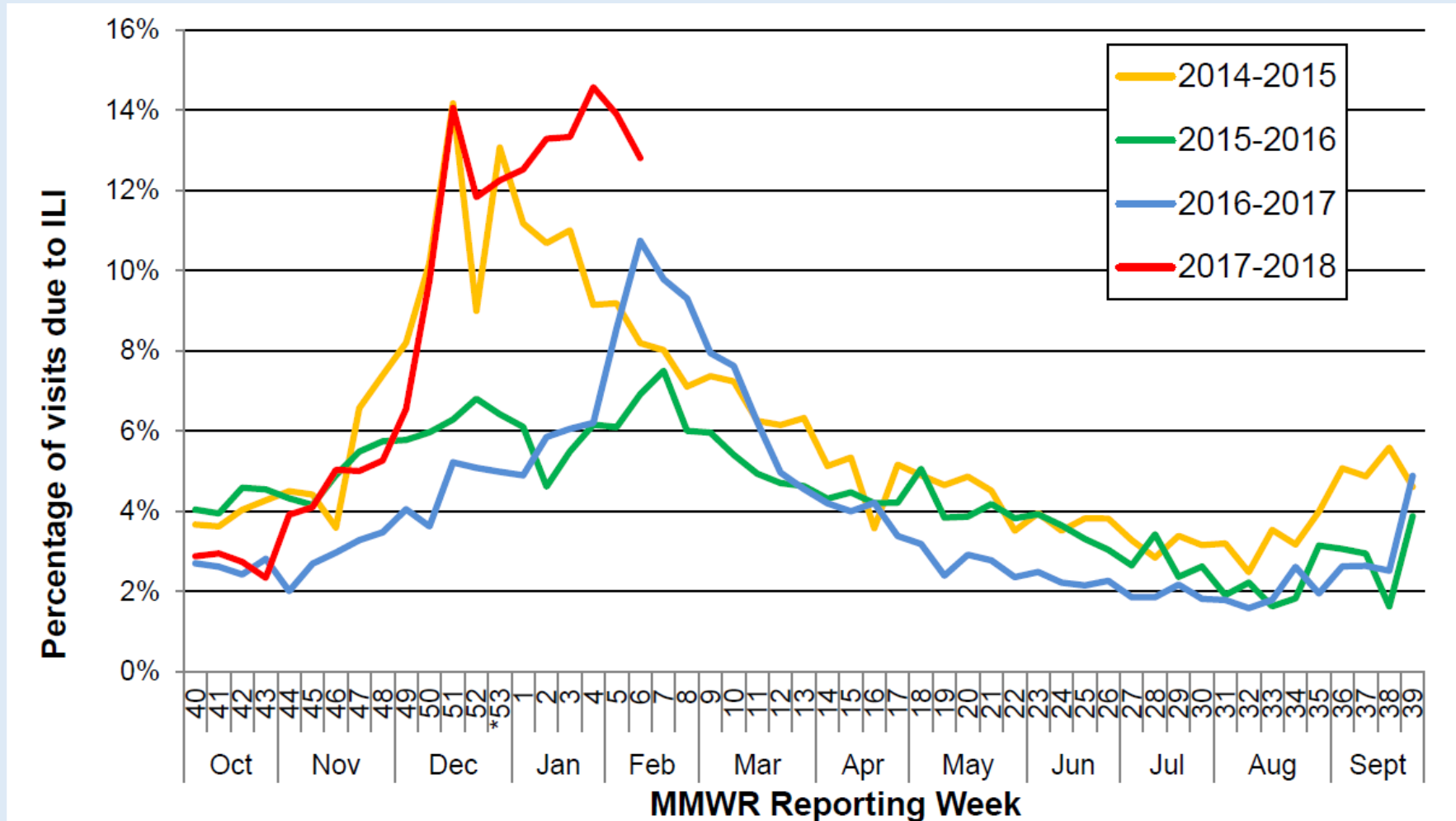
*Data source: Austin/Travis County Influenza surveillance reporters (St. David's, Austin Regional Clinic)

Austin/Travis County influenza surveillance does not attempt to capture all cases of influenza or influenza-like illness. These data should be used for trending purposes over time and for identifying types/strains of influenza that are occurring in the Austin area rather than for estimating the total number of cases.

Travis County Influenza Surveillance



Figure 2: Percentage of Visits Due to Influenza-like Illness Reported by Texas ILINet Participants, 2014–2018 Seasons*



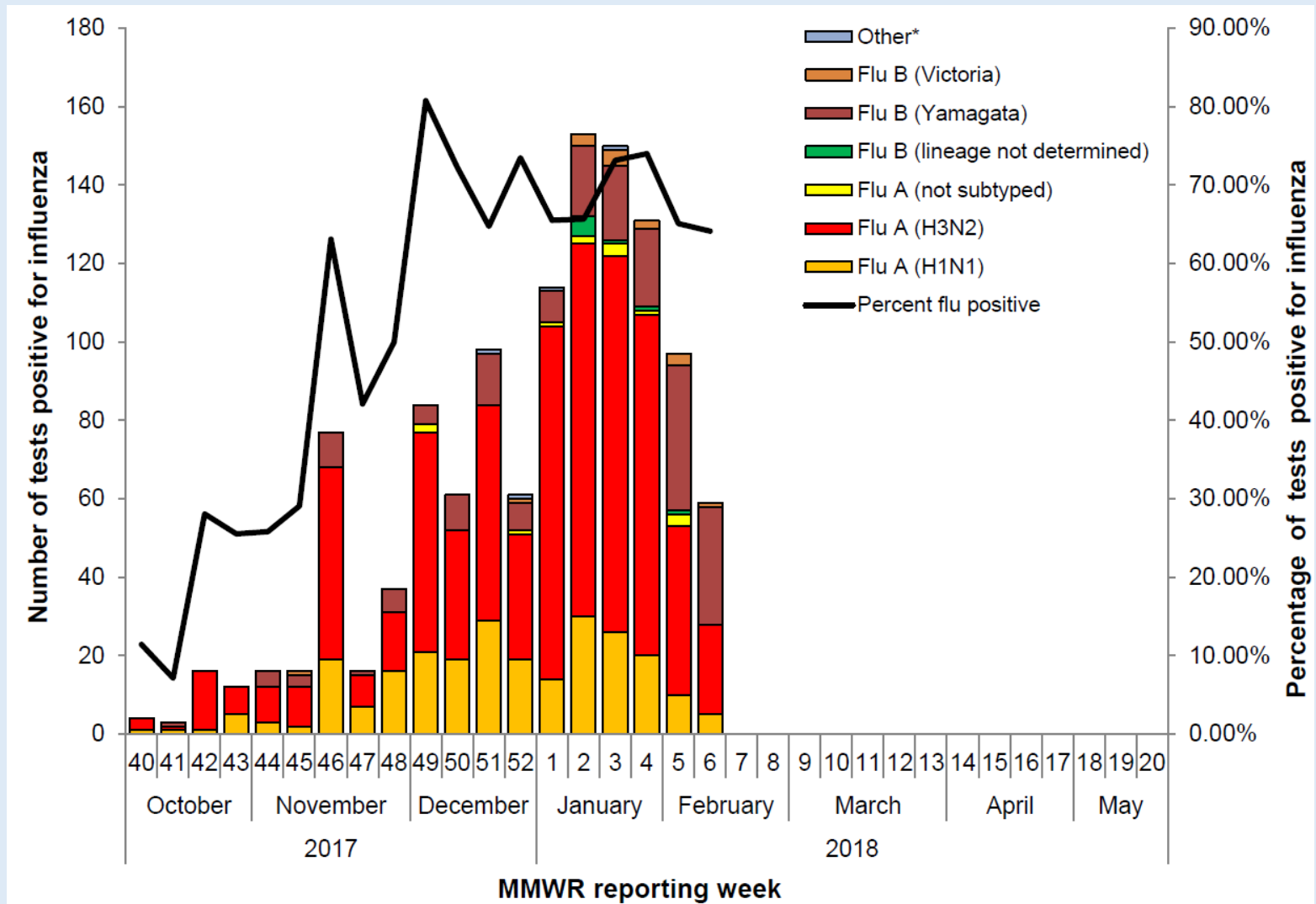
*There was a week 53 in the 2014-2015 influenza season, but there is not a week 53 for the 2017-2018 influenza season or the other previous seasons; therefore, the week 53 data point for those seasons is an average of week 52 and 1

Austin/Travis County influenza surveillance does not attempt to capture all cases of influenza or influenza-like illness. These data should be used for trending purposes over time and for identifying types/strains of influenza that are occurring in the Austin area rather than for estimating the total number of cases.

Travis County Influenza Surveillance



Figure 3: Number and Percentage of Tests (Antigen, Culture, PCR) Positive for Influenza by Type and Subtype Reported by Texas Hospital Laboratories, 2017–2018 Seasons



Austin/Travis County influenza surveillance does not attempt to capture all cases of influenza or influenza-like illness. These data should be used for trending purposes over time and for identifying types/strains of influenza that are occurring in the Austin area rather than for estimating the total number of cases.

Travis County Influenza Surveillance



For additional information about Influenza surveillance, contact:

The Austin/Travis County Health and Human Services Epidemiology and Health Statistics Unit at (512) 972-5555

Other Helpful Resources:

Texas Department of State Health Services (DSHS)

<http://www.texasflu.org/>

World Health Organization (WHO)

<http://www.who.int/influenza/en/>

Centers for Disease Control and Prevention (CDC)

<https://www.cdc.gov/flu/index.htm>