



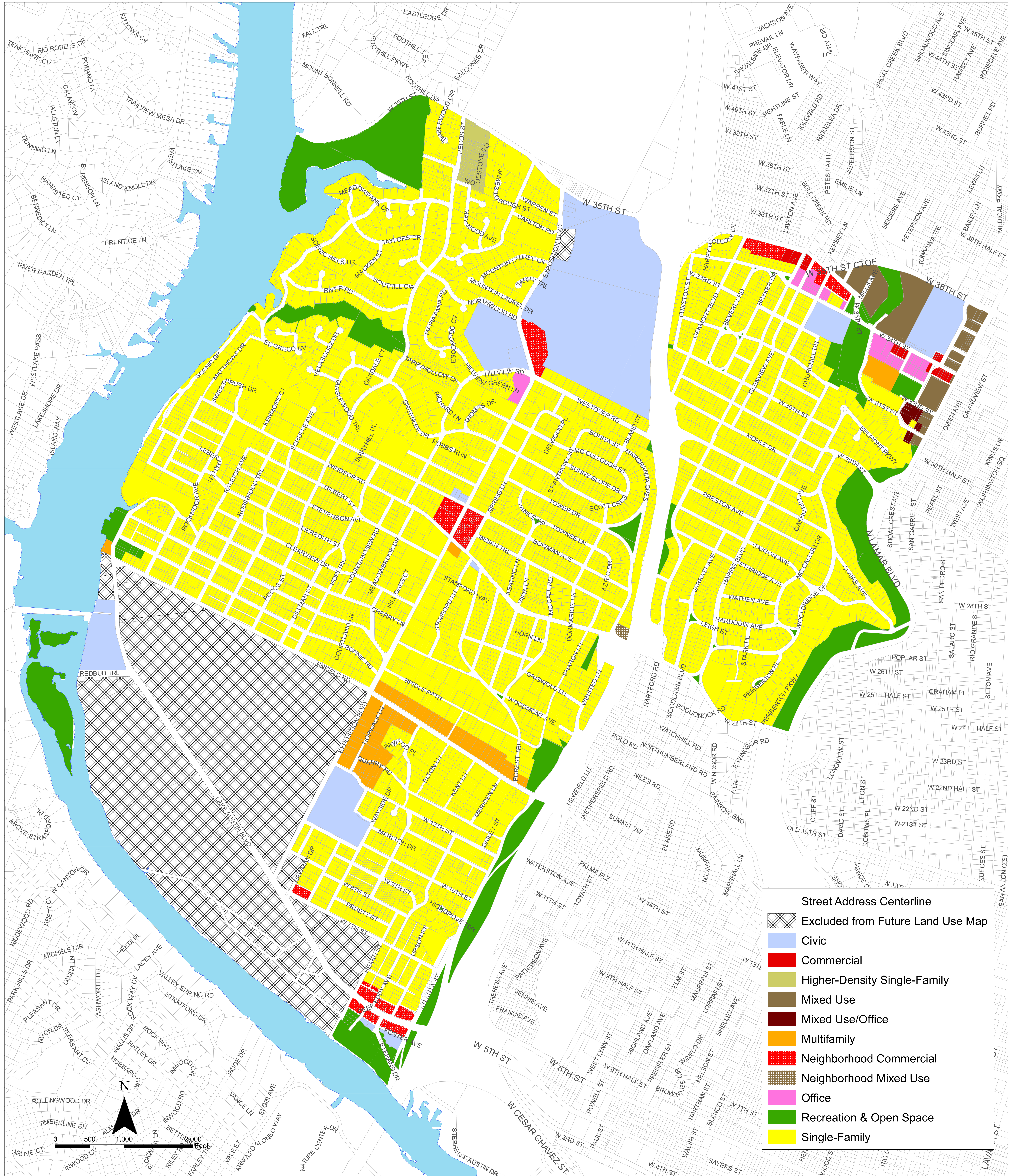
Central West Austin Combined Neighborhood Planning Area Future Land Use Map

Plan Adopted: September 23, 2010
Last Revised: Monday, March 2, 2020

A comprehensive plan shall not constitute zoning regulations or establish zoning district boundaries. Updates may occur past the date of this map. Please verify with the City of Austin.

The designation of a land use category does not imply that the most intense zoning district associated with that category will be automatically recommended or approved.

This map has been produced by the City of Austin Neighborhood Planning & Zoning Department for the sole purpose of aiding neighborhood planning decisions and is not warranted for any other use. No warranty is made by the City regarding its accuracy or completeness.



Street Address Centerline

- Excluded from Future Land Use Map
- Civic
- Commercial
- Higher-Density Single-Family
- Mixed Use
- Mixed Use/Office
- Multifamily
- Neighborhood Commercial
- Neighborhood Mixed Use
- Office
- Recreation & Open Space
- Single-Family

