

Oak Hill Combined Neighborhood Plan

Future Land Use Map

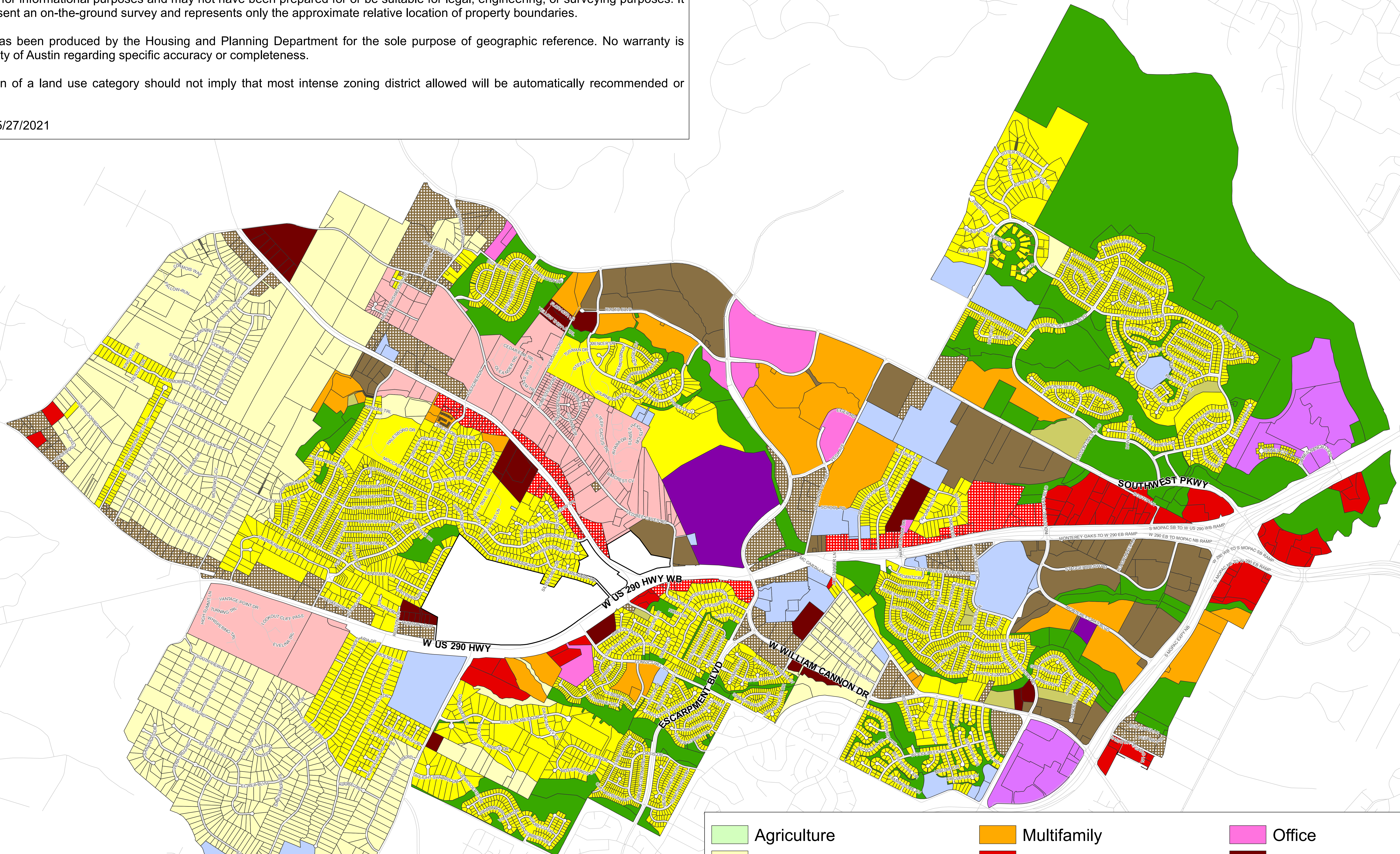
A comprehensive plan shall not constitute zoning regulations or establish zoning district boundaries. Updates may occur past the date of this map. Please verify with the City of Austin.

This product is for informational purposes and may not have been prepared for or be suitable for legal, engineering, or surveying purposes. It does not represent an on-the-ground survey and represents only the approximate relative location of property boundaries.

This product has been produced by the Housing and Planning Department for the sole purpose of geographic reference. No warranty is made by the City of Austin regarding specific accuracy or completeness.

The designation of a land use category should not imply that most intense zoning district allowed will be automatically recommended or approved.

Last Revised: 5/27/2021



Agriculture	Multifamily	Office
Rural Residential	Commercial	Mixed Use/Office
Single-Family	Neighborhood Commercial	Major Planned Development
Higher-Density Single-Family	Neighborhood Mixed Use	Industry
Mixed Residential	Mixed Use	Civic
		Recreation & Open Space
		Excluded From FLUM

No Future Land Use Designation for properties in white with black border

Areas in white with black border have no Future Land Use Designation. The neighborhood's desire is for the area to be planned cohesively and developed as a town center as referenced in chapter 6 of the neighborhood plan.