

Oak Hill Combined Neighborhood Plan

Future Land Use Map

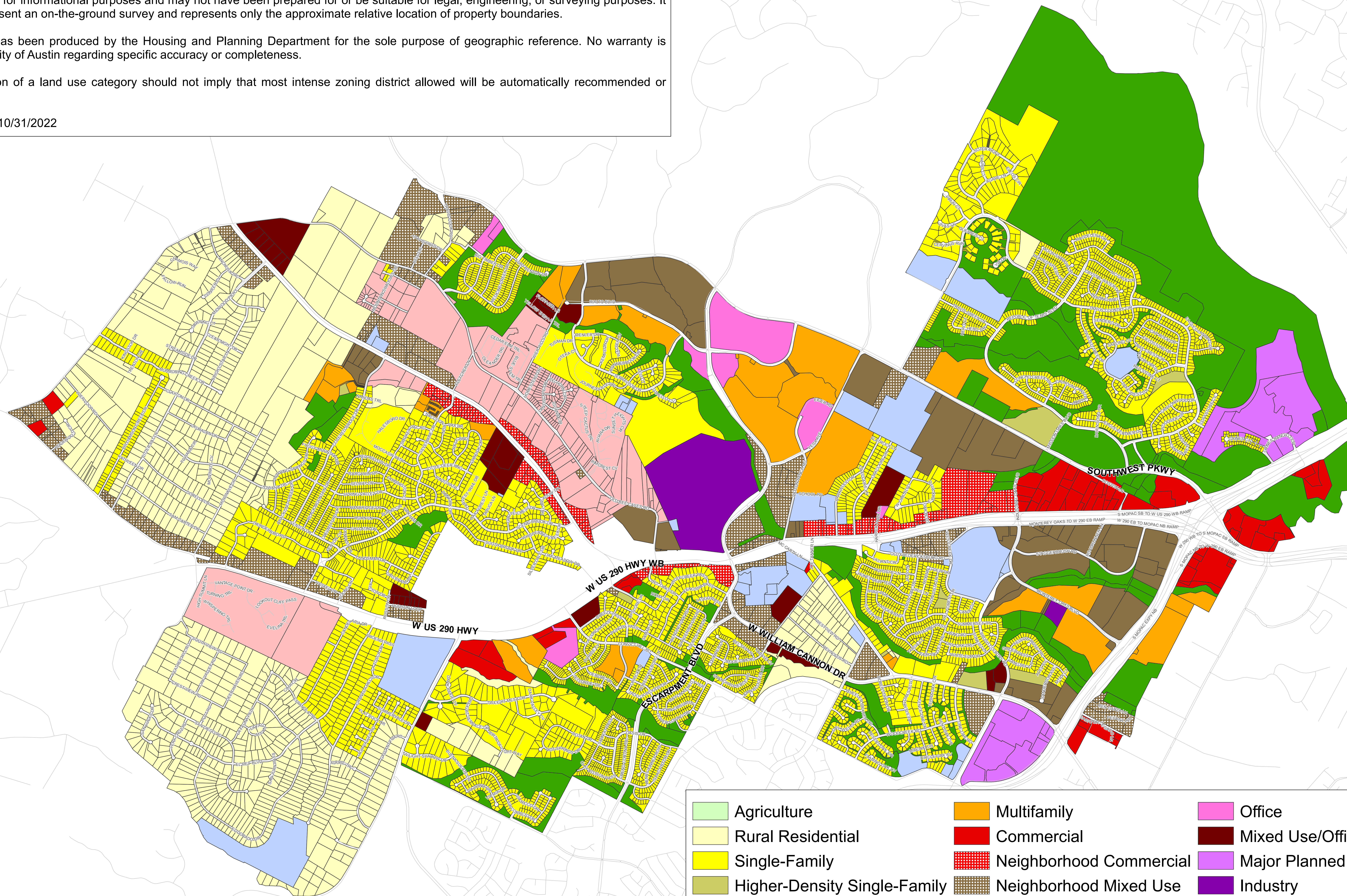
A comprehensive plan shall not constitute zoning regulations or establish zoning district boundaries. Updates may occur past the date of this map. Please verify with the City of Austin.

This product is for informational purposes and may not have been prepared for or be suitable for legal, engineering, or surveying purposes. It does not represent an on-the-ground survey and represents only the approximate relative location of property boundaries.

This product has been produced by the Housing and Planning Department for the sole purpose of geographic reference. No warranty is made by the City of Austin regarding specific accuracy or completeness.

The designation of a land use category should not imply that most intense zoning district allowed will be automatically recommended or approved.

Last Revised: 10/31/2022



	Agriculture		Multifamily		Office
	Rural Residential		Commercial		Mixed Use/Office
	Single-Family		Neighborhood Commercial		Major Planned Development
	Higher-Density Single-Family		Neighborhood Mixed Use		Industry
	Mixed Residential		Mixed Use		Civic
					Recreation & Open Space
					Excluded From FLUM

No Future Land Use Designation for properties in white with black border

Areas in white with black border have no Future Land Use Designation. The neighborhood's desire is for the area to be planned cohesively and developed as a town center as referenced in chapter 6 of the neighborhood plan.