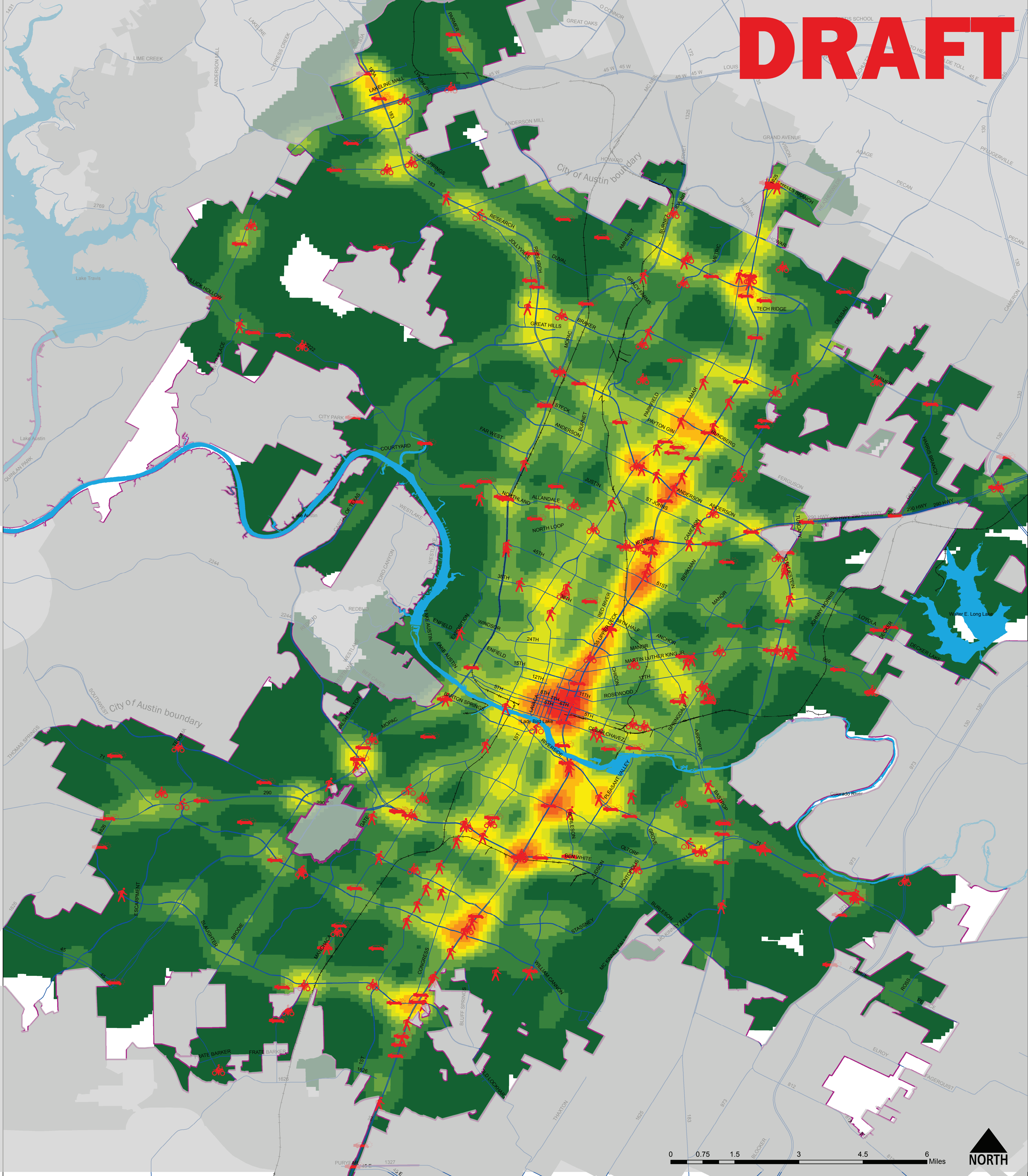


DRAFT



Injury & Fatal Crashes All Modes (2010-2014)

Source: TXDOT 2010 - 2014 Standard File Extract, City of Austin jurisdiction



Deaths by mode

- driving (145)
- walking (91)
- motorcycle (59)
- biking (7)

Concentration of injuries & deaths

No injuries or deaths

Low High