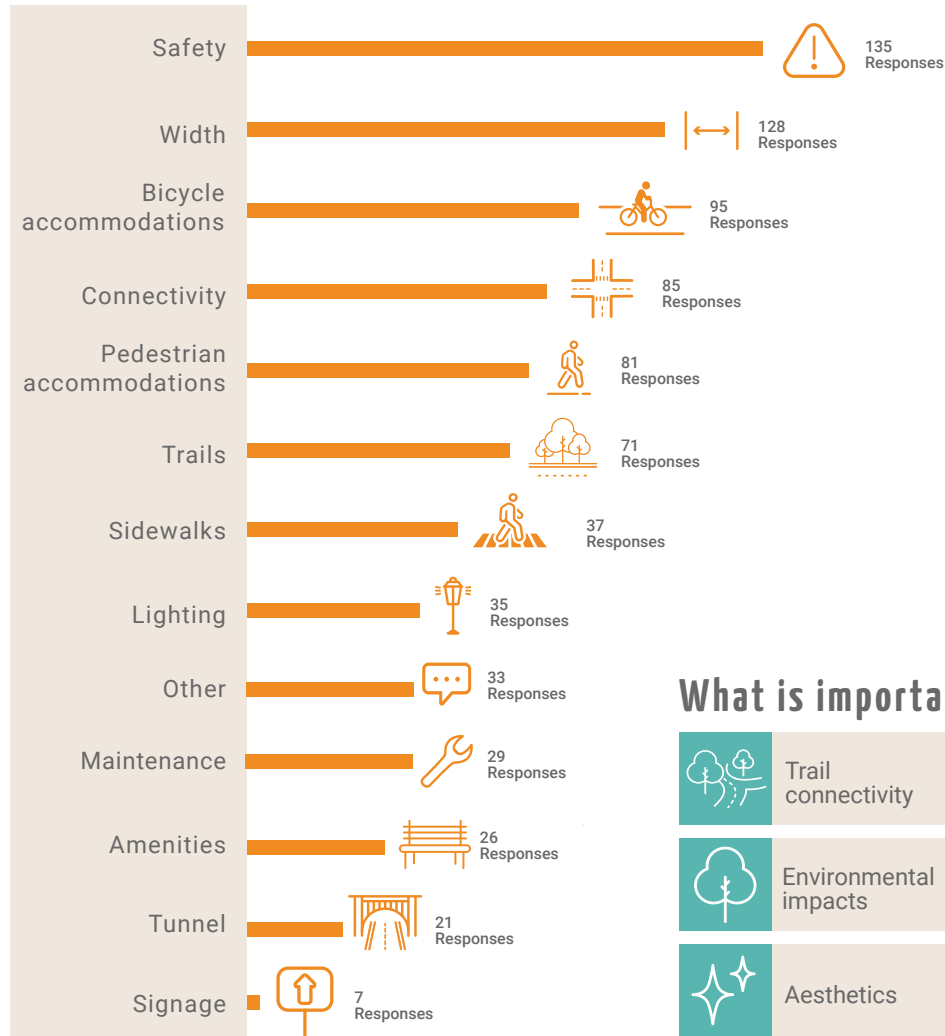


LONGHORN DAM MULTIMODAL IMPROVEMENTS

In 2018, the City of Austin began work on a Preliminary Engineering Report to evaluate the possibility of a new pedestrian and bicycle bridge over Lady Bird Lake, as well as a review of possible interim improvements to the existing bridge.

This report summarizes input received in person at the public meeting and through the survey. Over 550 responses were received and analyzed. Input received from the community is being evaluated to develop alternatives for public review.

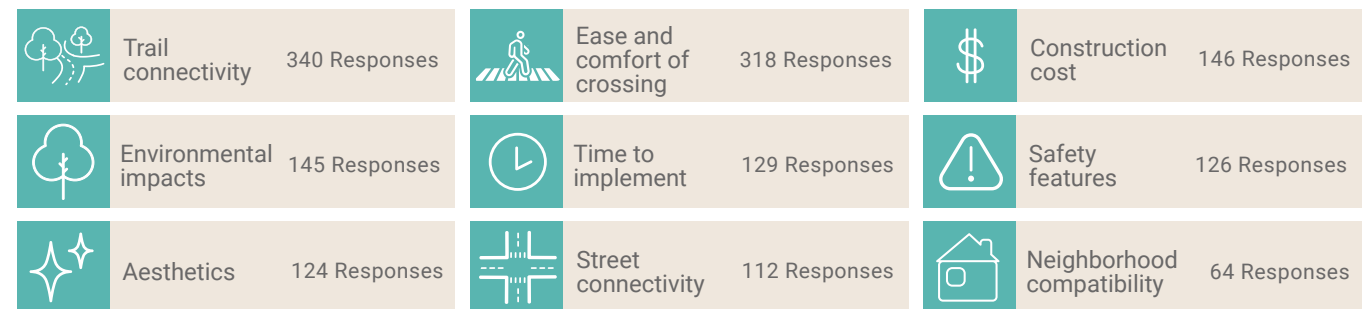
What needs improvement?



What do you like?



What is important? (Evaluation criteria)



LONGHORN DAM MULTIMODAL IMPROVEMENTS

What is your ideal bridge alignment?

Open house participants and online survey respondents reported using the area, including the bridge, connecting trails, and local streets, for riding bikes, walking, and running on the Butler Trail Loop. Participants indicated they use the existing infrastructure as a north-south connection from S. Pleasant Valley Rd. to Cesar Chavez St. and from the Butler Trail to Pedernales St. Participants also indicated they use the area as an east-west connection from Lakeshore Blvd to the Country Club Creek Trail, and as a connection to the Guerrero Park Trail.

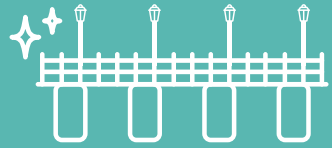

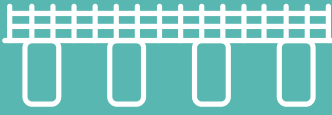
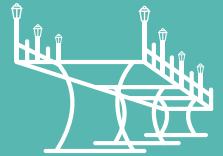



A	Upstream from the dam, connecting to the peninsula	156 Responses
B	Wishbone shaped bridge that connects to the shore at three points*	13 Responses
C	Upstream from the dam, parallel to Pleasant Valley Road	176 Responses
D	Downstream from the dam, parallel to Pleasant Valley Road and connected to Ann and Roy Butler Bike Trail	63 Responses
E	Widening the existing bridge	67 Responses
	No build	9 Responses

*Alignments A, C, D + E were presented as options on the online survey; alignment B was drawn by attendees at the open house

LONGHORN DAM MULTIMODAL IMPROVEMENTS

Which bridge type do you prefer?

<p>Hybrid Conventional Bridge</p>  <p>\$7.1 to \$8.4 million</p>	215 Responses
<p>Truss Bridge</p>  <p>\$7.0 to \$8.3 million</p>	116 Responses
<p>Conventional Bridge</p>  <p>\$6.7 to \$8.0 million</p>	94 Responses
<p>Custom Beam Bridge</p>  <p>\$10.4 to 12.4 million</p>	46 Responses
<p>Iconic Bridge</p>  <p>\$21.7 to 26.2 million</p>	34 Responses

What improvements should happen sooner?

Increase sidewalk widths on bridge	387 Responses
Improve north and south pedestrian and bicycle connections to bridge	352 Responses
Improve pedestrian crossings on Pleasant Valley Road	229 Responses
Reduce speed on Pleasant Valley Road	118 Responses
Make pedestrian bridge ADA compliant	111 Responses
Remove chain link fence on bridge	101 Responses
Upgrade bridge handrails	95 Responses