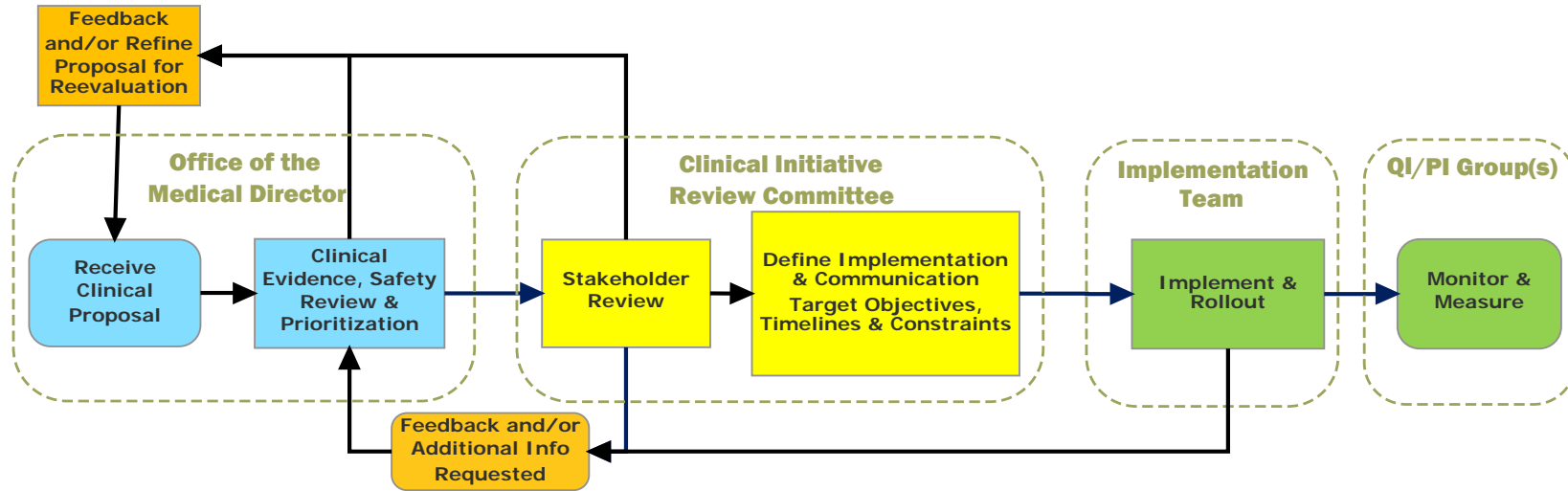


Clinical Initiative Review Process Flow Diagram (v1.2)
Austin-Travis County EMS System



Assess Clinical Gap, Safety, Effectiveness & Priority

Identify the problem, gap or need

Summarize Lit. Review, Supporting Evidence, and Alternative Solutions

ID potential:

- harm to patients & others
- negative aspects
- implementation challenges
- unintended consequences

Prioritize proposals

Submit all to Clinical Initiative Review Committee

Review Stakeholder Impact, Feasibility, Challenges, Budget & other Impacts

Operational & Clinical Impact:

- Policy/COG
- Training/Education
- Evaluation/Testing Req'd
- Credentialing
- Infection Prevention
- Documentation
- Data Capture
- QI/PI Review
- Timing/Time Requirements
- Further study required

Long Term Impact

Unintended Consequences

Committee Considers Implementation Needs

Define:

- Estimated Cost/Financial Impact
- Operational Feasibility
- Implementation Barriers & Solutions
- Action steps if further review req'd

Implementation Plan (high level)

- Define target milestones
- Define implementation goals
- Define responsible Organizations & Staff for key implementation steps (Implementation Team)

Develop & Execute Implementation Plan & Timeline

Define:

- Implementation Team
- Initial implementation
- Ongoing implementation
- Data collection & Measurement
- Timelines for each

Plan Considers:

- Cycle Testing/Evaluation prior to implementation
- Policy/Procedure/COG changes
- Training/Education
- Provider evaluation/testing
- Credentialing requirements
- Purchasing
- Bulk Storage, Distribution & Labeling
- Unit Storage, Distribution & Labeling
- System (internal) communication
- Community (external) communication
- Sequencing of all steps
- Steps to enhance patient & provider safety (minimize risks)

Monitor & measure for one or more cycles or full implementation:

Define monitoring & measurement plan

- Measures & Data elements
- Queries & Reports
- Data collection process
- Frequency of measurement, reporting & analysis
- Define QI and Public Info
- Changes req'd to implement

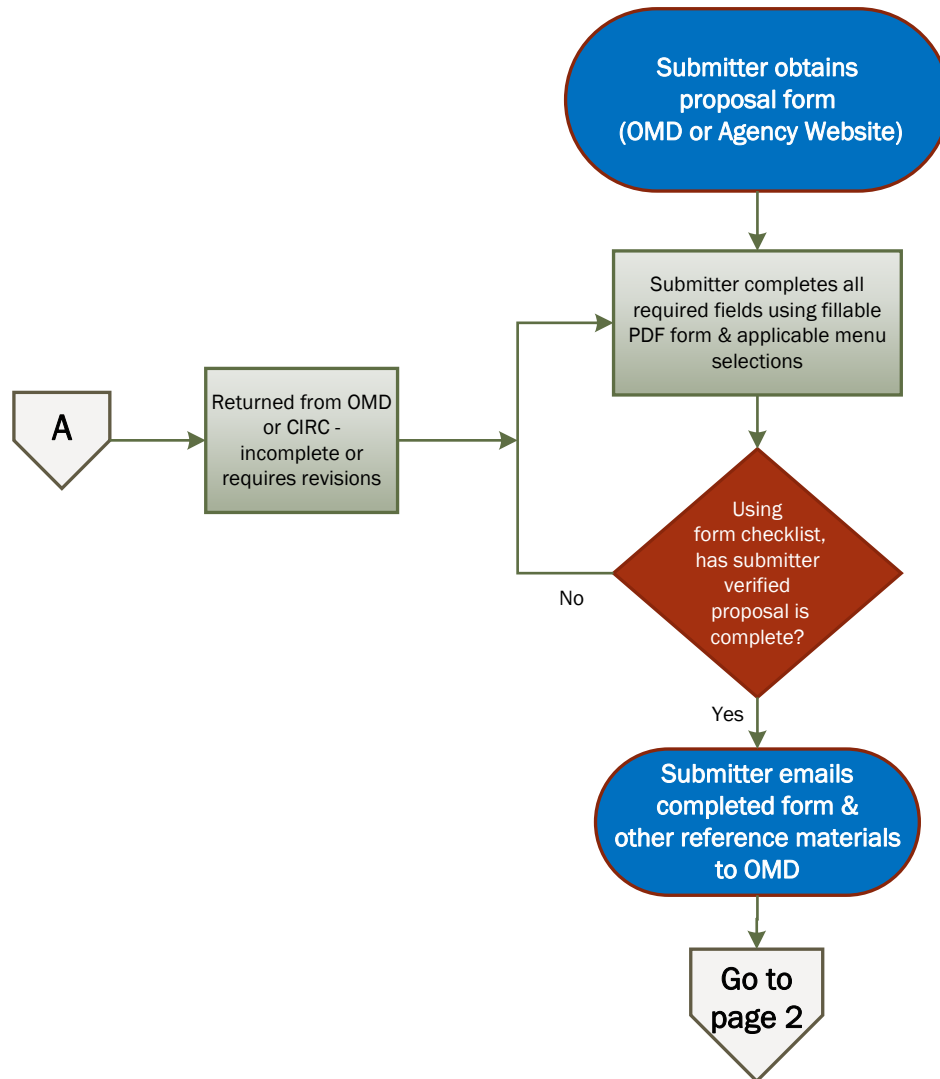
Define measures & expectations

- Outcome, Process and/or Structural
- Performance expectations
- Analysis of data & measurements
- Implementation objectives (clinical effectiveness, patient & provider safety, efficiency/cost)

Clinical Initiative Review Process Flow Diagram

Austin-Travis County EMS System, V1.2

Submission Process



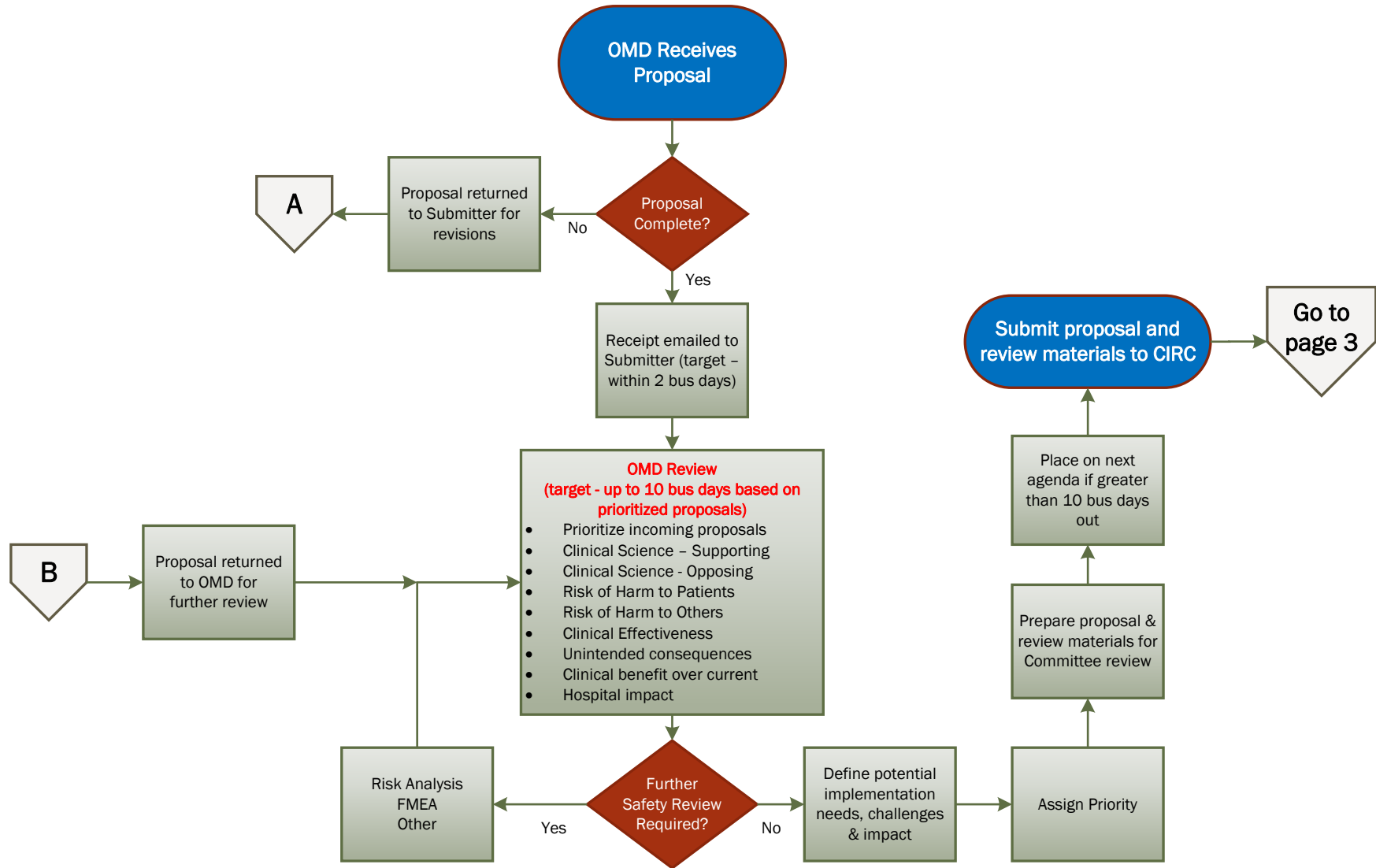
NOTE; Proposals must be submitted at least 23 business days prior to next CIRC meeting for possible inclusion on agenda.

Note: All proposals, tasks, action items and timelines are added to Project Tracking Software throughout all phases of this process

Clinical Initiative Review Process Flow Diagram

Austin-Travis County EMS System, V1.2

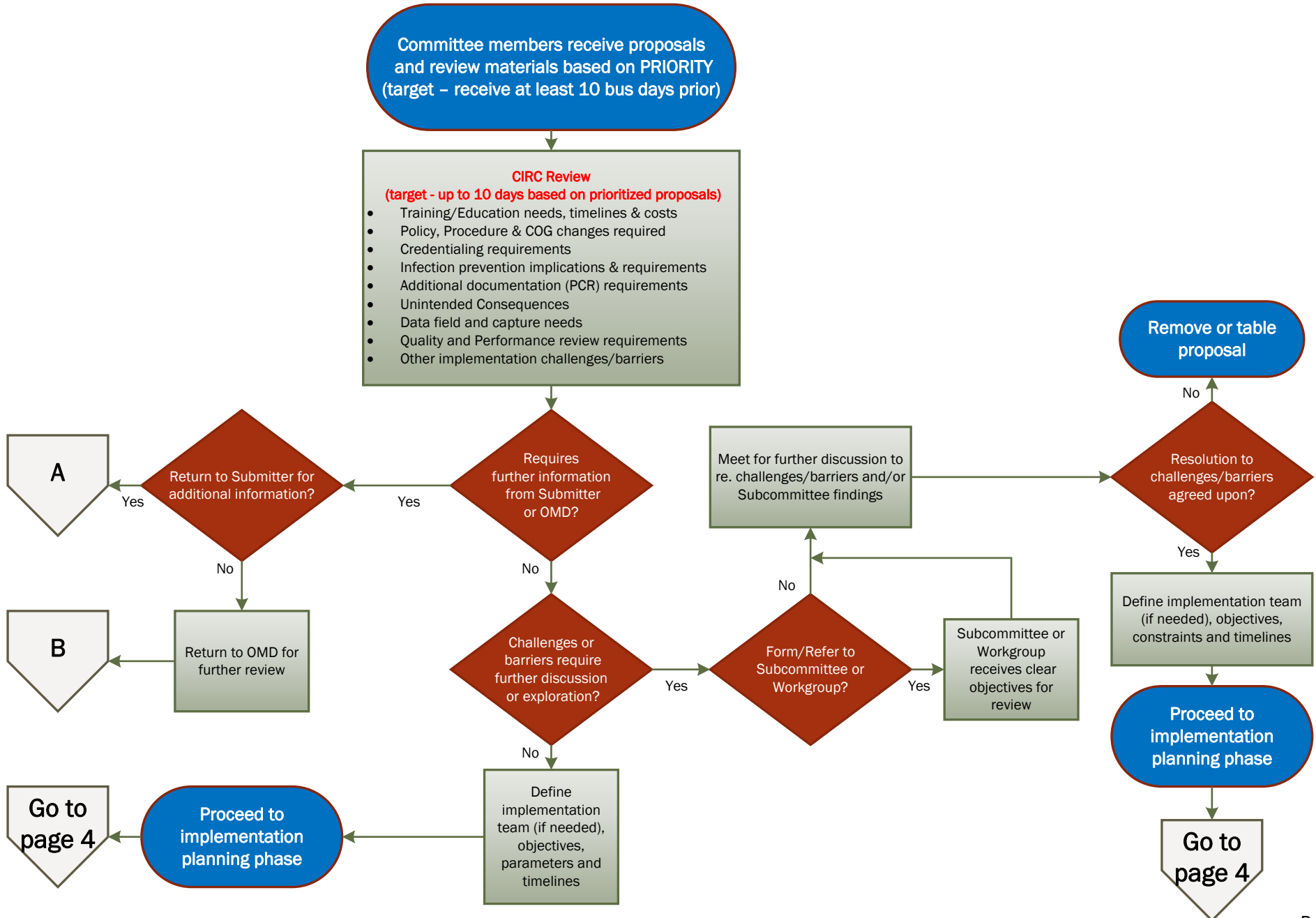
OMD Review Process



Clinical Initiative Review Process Flow Diagram

Austin-Travis County EMS System, V1.2

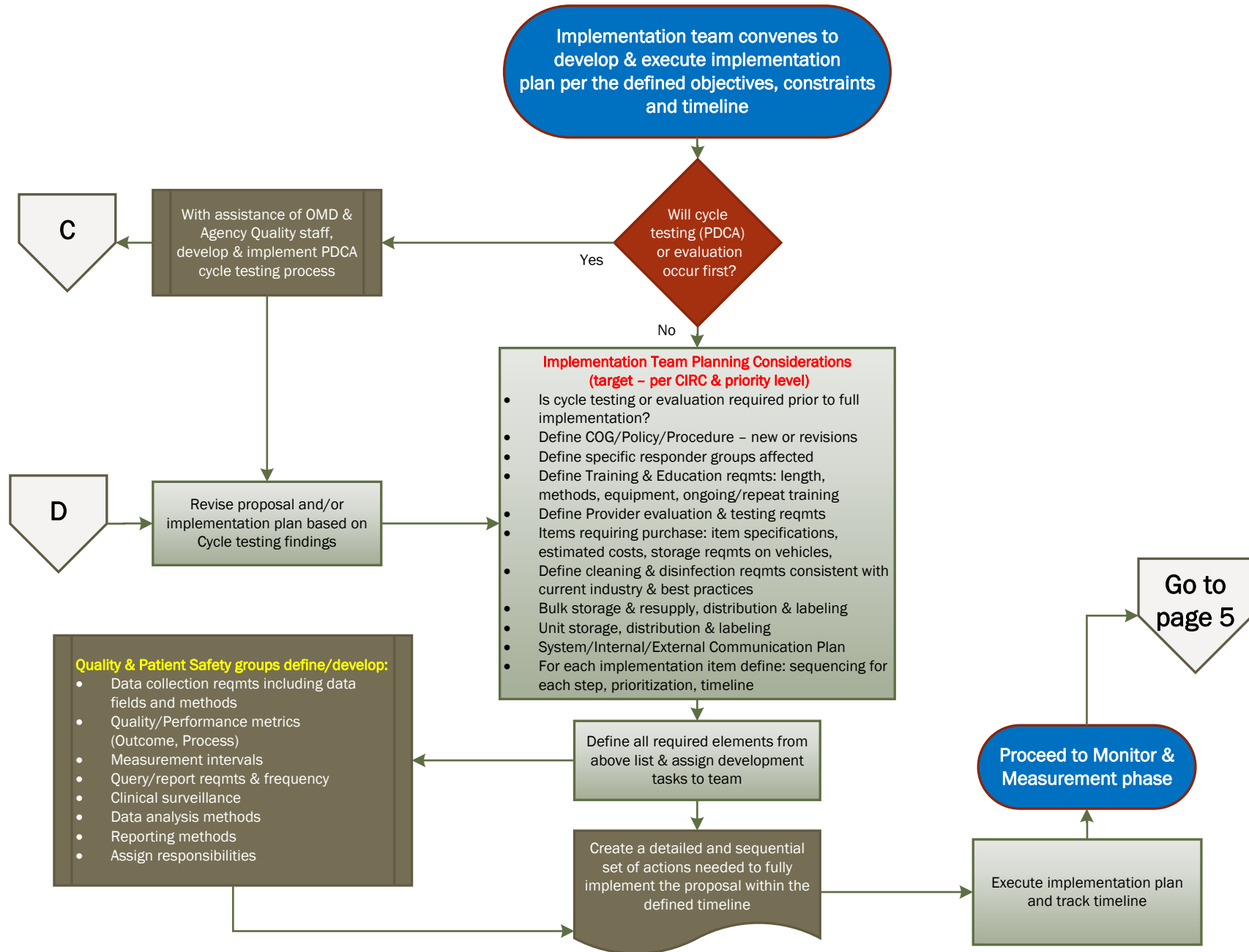
CIRC Review Process



Clinical Initiative Review Process Flow Diagram

Austin-Travis County EMS System, V1.2

CIRC Implementation Planning Process



Clinical Initiative Review Process Flow Diagram

Austin-Travis County EMS System, V1.2

Monitoring & Measuring Process

