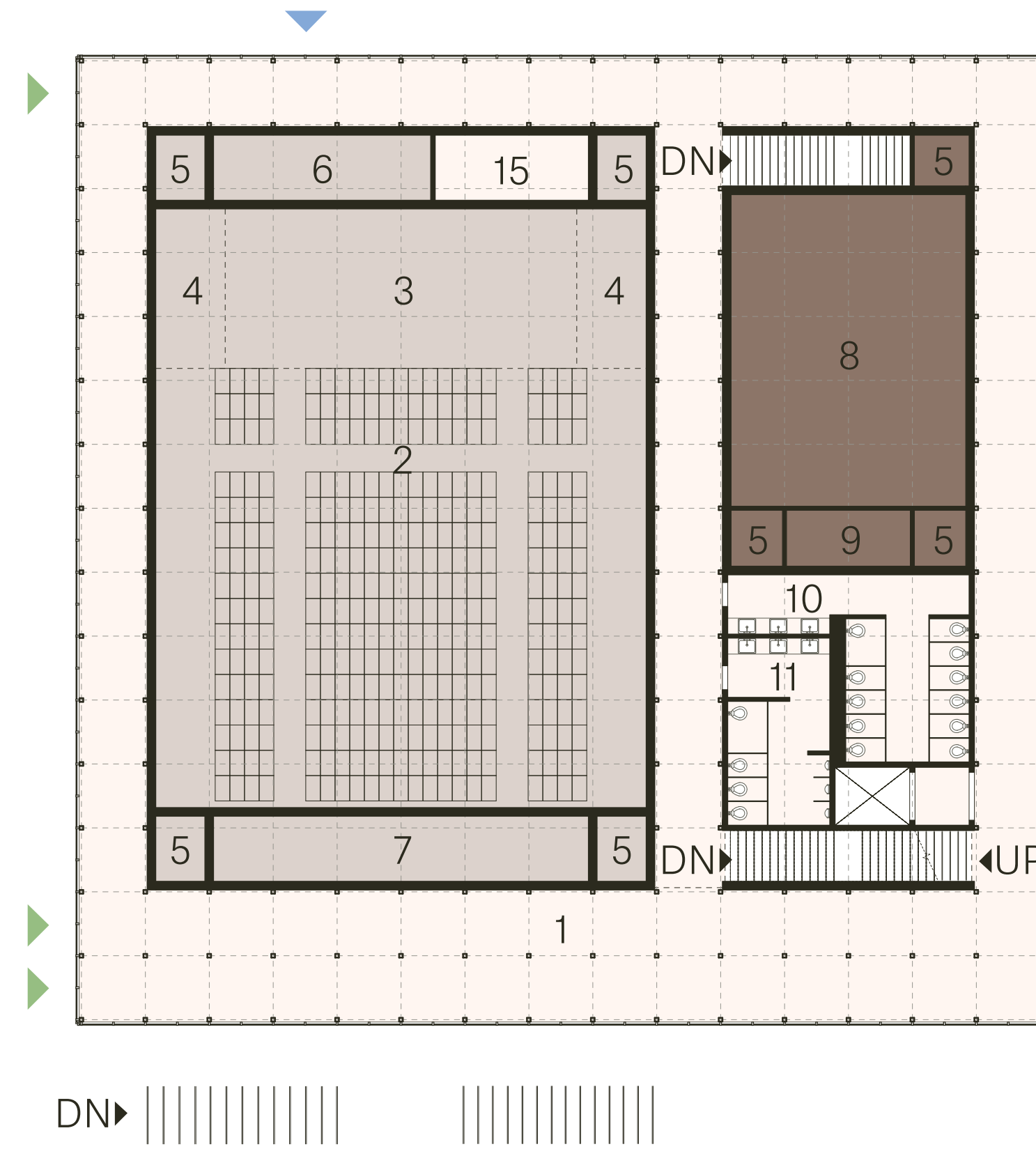


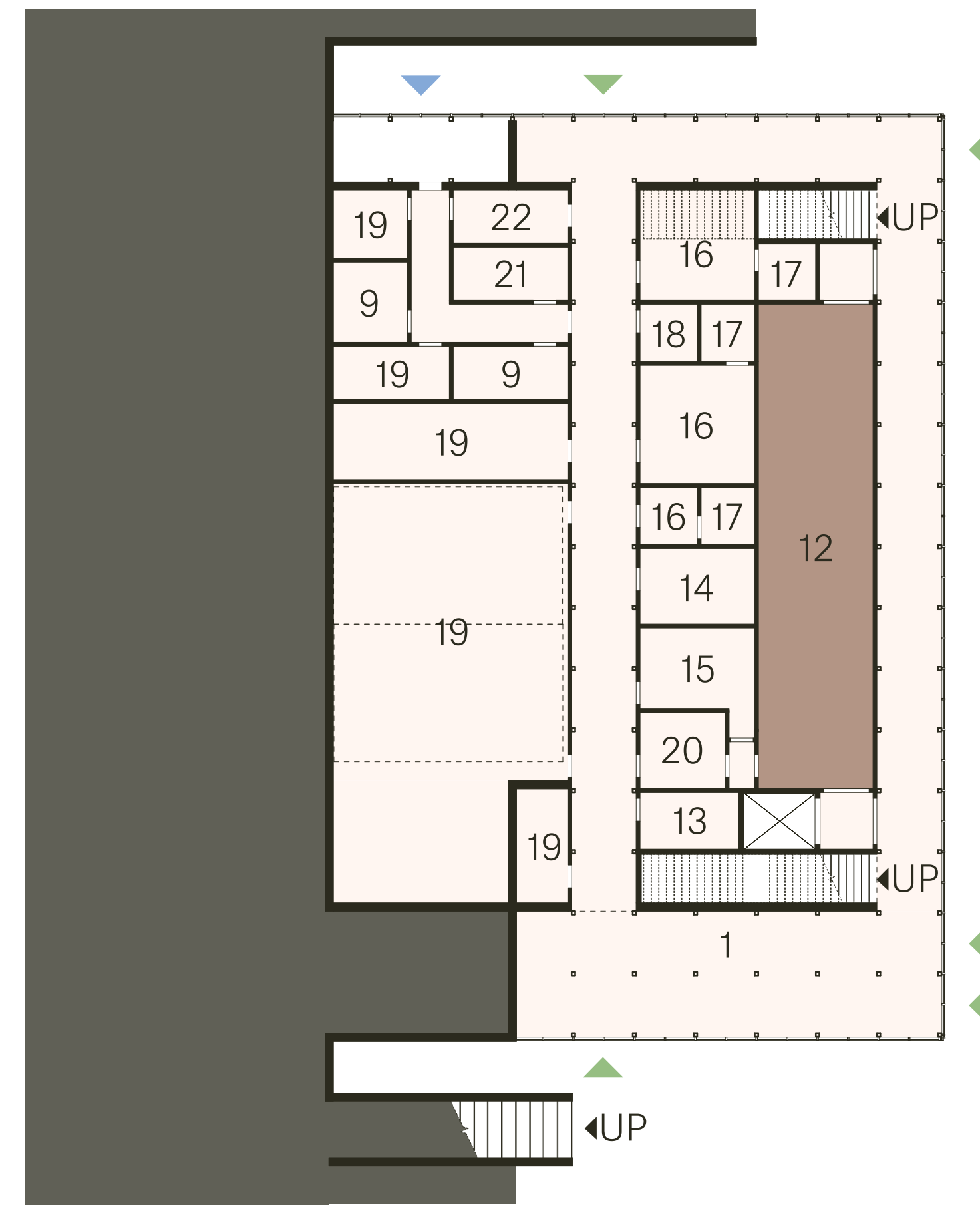
Design - Building Planning

- ▶ Public Entry
- ▶ Loading/Support Entry
- Theater
- Multi-Purpose Room
- Art Gallery
- Lobby/Circulation/Support Spaces

- 1 Lobby
- 2 Auditorium
- 3 Stage
- 4 Wing
- 5 Sound & Light Lock
- 6 Back Stage/Storage
- 7 Seating Storage
- 8 Multi-Purpose Room
- 9 Storage
- 10 Women's Restroom
- 11 Men's Restroom
- 12 Art Gallery
- 13 Catering Support
- 14 Staff Kitchenette
- 15 Office
- 16 Dressing Room
- 17 Dressing Room Restroom
- 18 Gender-Neutral Restroom
- 19 Mechanical/Electrical/Plumbing Room
- 20 Gallery Prep Space
- 21 Maintenance Workshop
- 22 Waste Management



Level 1



Level 0

If you host events, what other kind of things in the facility would be helpful?

