



Floor Plan Draft Options Survey Summary

On March 1, the City of Austin Parks and Recreation Department and the Austin/Travis County Health and Human Services Department, in partnership with design consultant McKinney York Architects, released three (3) floor plan draft options for community feedback to inform the design planning for the new Montopolis Recreation and Community Center. The floor plan drafts were based on earlier community feedback received during December 2015's "Community and Project Team Meet and Greet" and the "Community Visioning Workshops" held this January.

To increase community awareness, the floor plan drafts (Attachment 1) were displayed on large boards at four locations in the Montopolis neighborhood from March 1 through the 14. During that time, community feedback was gathered through paper surveys (Attachment 2) available at each site. The survey's goal was to understand which floor plan the community preferred. Survey questions were developed according to the community feedback received from the Adjectives Exercise during the "Community and Project Team Meet and Greet" event, when we asked, "how would you like your community to describe the new Recreation and Community Center?"

For those who could not visit one of the four locations, the floor plan drafts and survey were made available online in English and Spanish from March 1-14. The community was also invited to request small group sessions or to make comments over the phone by calling Austin 3-1-1, the City of Austin services line.

A total of 193 surveys (Attachment 3) were submitted through a combination of paper surveys, online submittals, and in-person survey intercepts. Upon request, the project team also presented the boards to the Montopolis Neighborhood Association. Feedback received during the survey period is intended to inform and help guide the final schematic design. None of the three floor plan drafts is to be considered as final. On the evening of May 4, the final schematic design will be presented at the Montopolis Recreation Center's Cinco de Mayo celebration.

Montopolis neighborhood floor plan drafts display locations

- Montopolis Recreation Center – 1200 Montopolis Dr.
- Allison Elementary School – 512 Vargas Rd.
- Southeast Health and Wellness Center – 2901 Montopolis Dr.
- Ruiz Branch Library – 1600 Grove Blvd.

Recreation and Community Center Project Proyecto del Centro Comunitario y Recreacional



First Floor and Site Plan
Plano - Primer Piso y Sitio

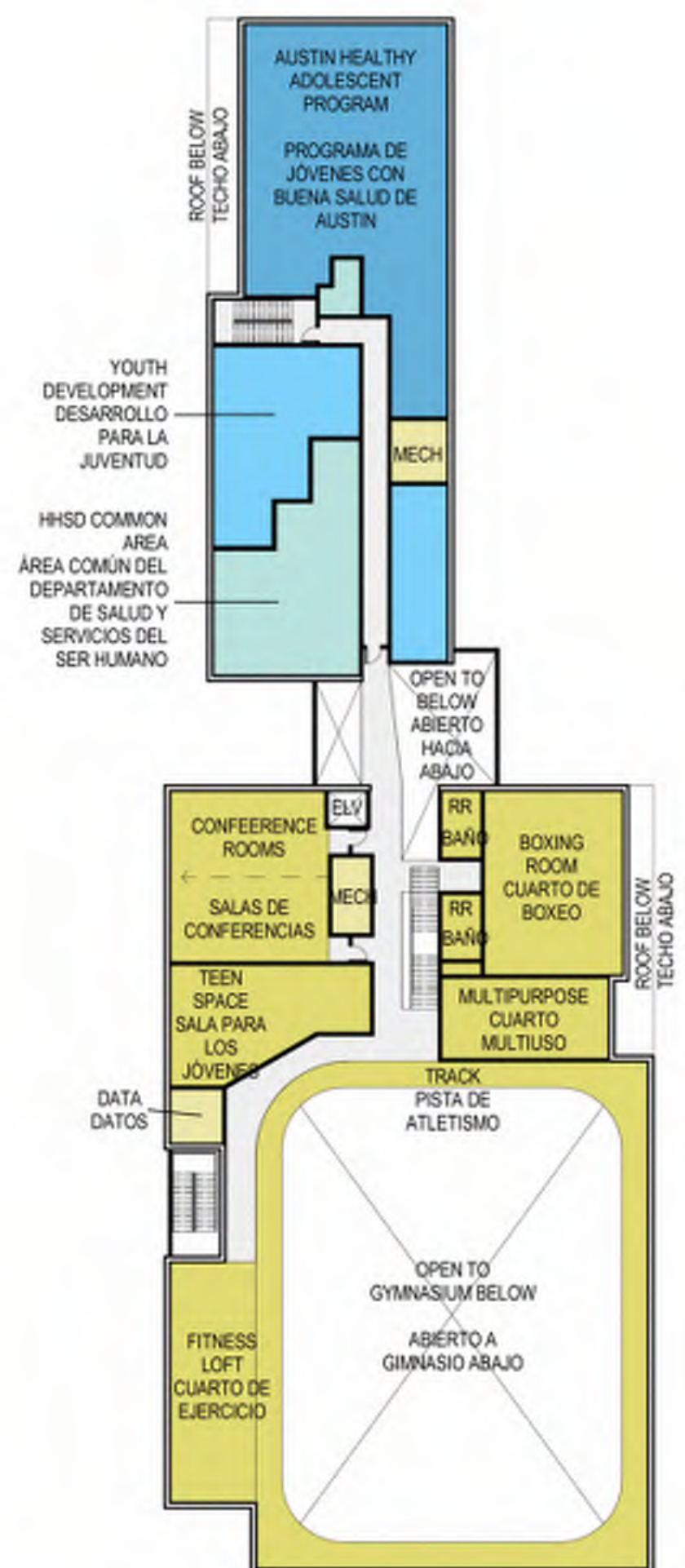
Description

- Front entry faces Montopolis and connects visually with the Church across the street
- Drop-off area is close to entry
- Front and Back entry are protected from sun and rain
- Front and Back entry connect to a central lobby/reception area
- Building has a prominent presence along the street, engages the sidewalk to create an active streetscape, and conceals the parking lot
- Shaded sitting area off gym to view play areas
- Parking lot entry/exit aligns with Palm Circle
- Reception desk has a visual connection with the gymnasium
- Boxing room perches on the second floor corner with a view from entry plaza and Montopolis Dr.
- Locker rooms are convenient to the gymnasium
- Separate entry to Health Services
- Kitchen is convenient to the gymnasium and outdoor covered area overlooking playgrounds
- Future expansion is logical
- Fitness area is adjacent to track and is open to the gymnasium

Descripción

- La entrada principal hace frente a Montopolis y conecta visualmente con la iglesia a través de la calle.
- Zona de descarga ubicada cerca de la entrada.
- Entrada delantera y trasera protegida contra el sol y la lluvia.
- Entrada delantera y trasera liga con un área central del lobby y de la recepción.
- El edificio tiene una presencia superior a lo largo de la calle, se engancha con la banqueta para crear un paisaje urbano y esconde el estacionamiento.
- Área sombreada al lado del gimnasio para ver áreas de juego.
- La entrada y salida del estacionamiento alinea con Palm Circle.
- La mesa de recepción tiene una conexión visual con el gimnasio.
- El cuarto de boxeo se ubica en la esquina de la segunda planta con una vista desde la plaza de la entrada y Montopolis Dr.
- Los vestuarios son convenientes al gimnasio.
- Entrada apartada a los servicios médicos.
- La cocina es conveniente al gimnasio y al área cubierta de afuera con vista al patio de recreo.
- La expansión futura es lógica.
- Zona de ejercicio se coloca enseguida de la pista de atletismo y está abierto al gimnasio.
- Opción más energéticamente eficiente.

option A



Second Floor Plan
Plano - Segundo Piso

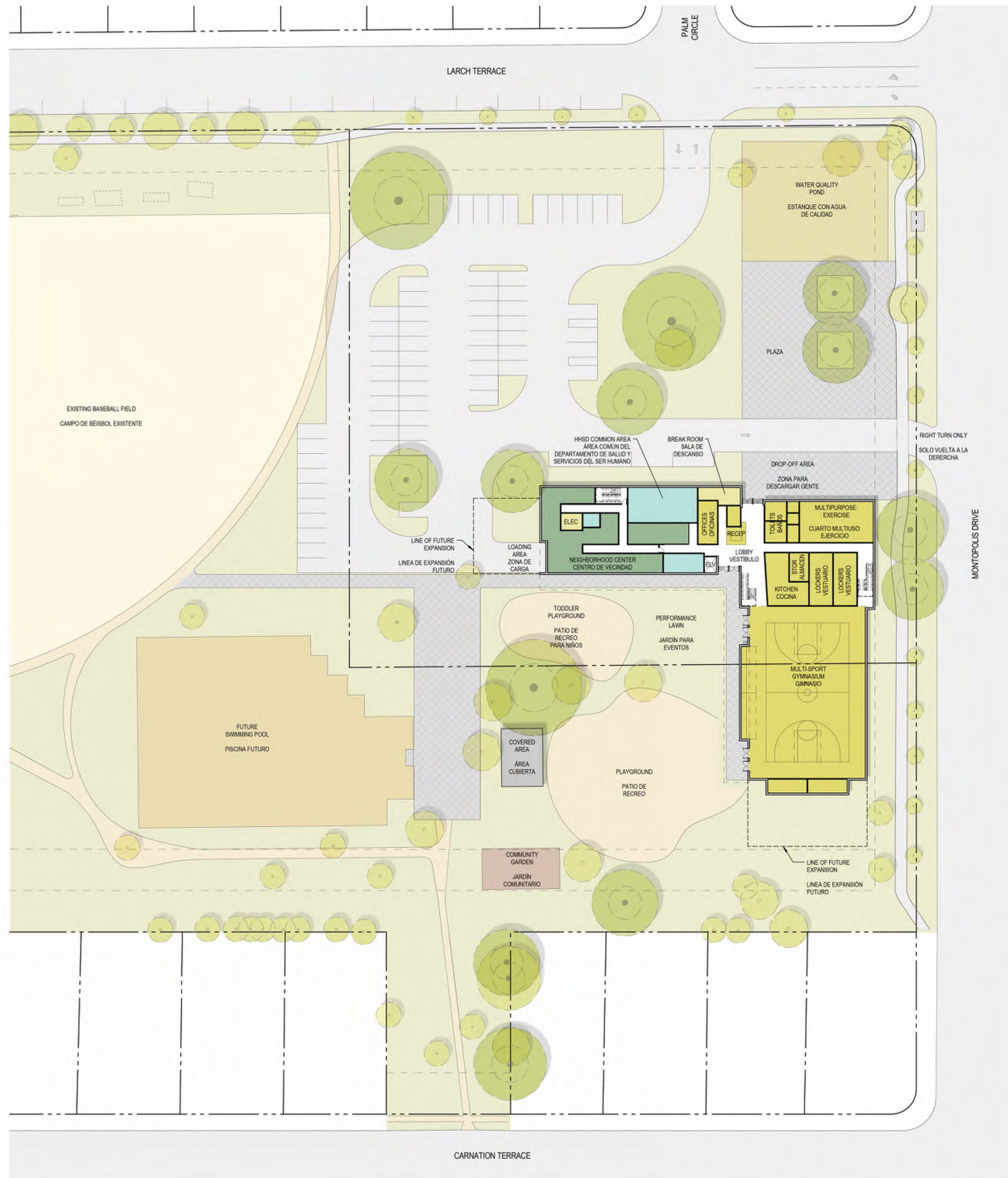
Legend Leyenda

- Recreation Center
Centro de Recreación
- Shared Spaces
Espacios Compartidos
- Neighborhood Center
Centro de Vecindad
- Austin Healthy Adolescent Program
Programa de Jóvenes con Buena Salud de Austin
- Youth Development
Desarrollo Para la Juventud
- HHSD Common Areas
Área Común del Departamento de Salud y Servicios del Humano



Aerial Perspective from Montopolis Drive
Perspectiva Aérea desde Montopolis Drive

Recreation and Community Center Project Proyecto del Centro Comunitario y Recreacional



First Floor and Site Plan
Plano - Primer Piso y Sitio

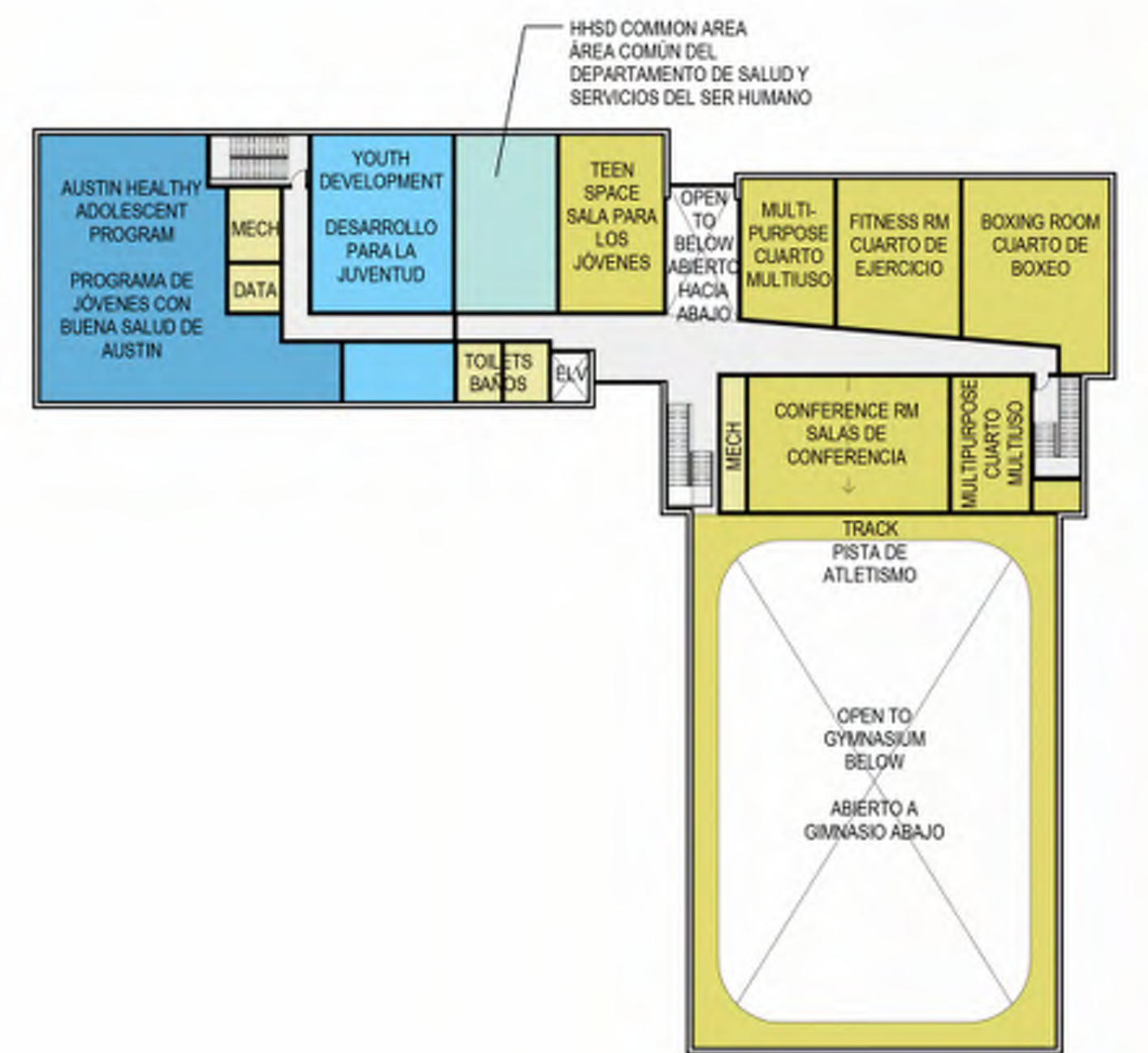
Description

- Front entry faces a large plaza that visually connects with the Church across the street
- Parking lot entry/exit aligns with Palm Circle.
- A right-turn-only exit is provided onto Montopolis
- Front and Back entry are protected from sun and rain
- Front and Back entry connect to a central lobby/reception area
- The building's L-shape frames an outdoor space for the playground with a shaded walkway at the perimeter
- Long side of health department wing faces north optimizing opportunity for office daylighting
- Long side of gymnasium faces Montopolis, engages the sidewalk to create an active streetscape
- Boxing room perches on the second floor corner with a view from entry plaza and Montopolis Dr.
- Boxing room and fitness room are conveniently located next to each other.
- Reception desk has a visual connection with the gymnasium
- Kitchen is convenient to both the lobby and gymnasium

Descripción

- La entrada principal hace frente a una plaza grande que conecta visualmente con la iglesia a través de la calle.
- La entrada y salida del estacionamiento alinea con Palm Circle.
- Solo una salida de giro a la derecha se presta hacia Montopolis.
- Entrada delantera y trasera protegida contra el sol y la lluvia.
- Entrada delantera y trasera liga con un área central del lobby y de la recepción.
- La forma del edificio enmarca un espacio para el patio de recreo con una calzada sombreada en el perímetro.
- El lado extenso de la ala del departamento de la salud está ubicado hacia el norte, aumentando la oportunidad de iluminación natural para las oficinas.
- El lado extenso del gimnasio hace frente a Montopolis y se engancha con la banqueta para crear un paisaje urbano.
- El cuarto de boxeo se ubica en la esquina de la segunda planta con una vista desde la plaza de la entrada y Montopolis Dr.
- El cuarto de boxeo y cuarto de ejercicio se localizan convenientemente uno al lado del otro.
- La mesa de recepción tiene una conexión visual con el gimnasio.
- La cocina es conveniente al lobby y al gimnasio.
- Segunda opción más energéticamente eficiente.

option B



Second Floor Plan
Plano - Segundo Piso

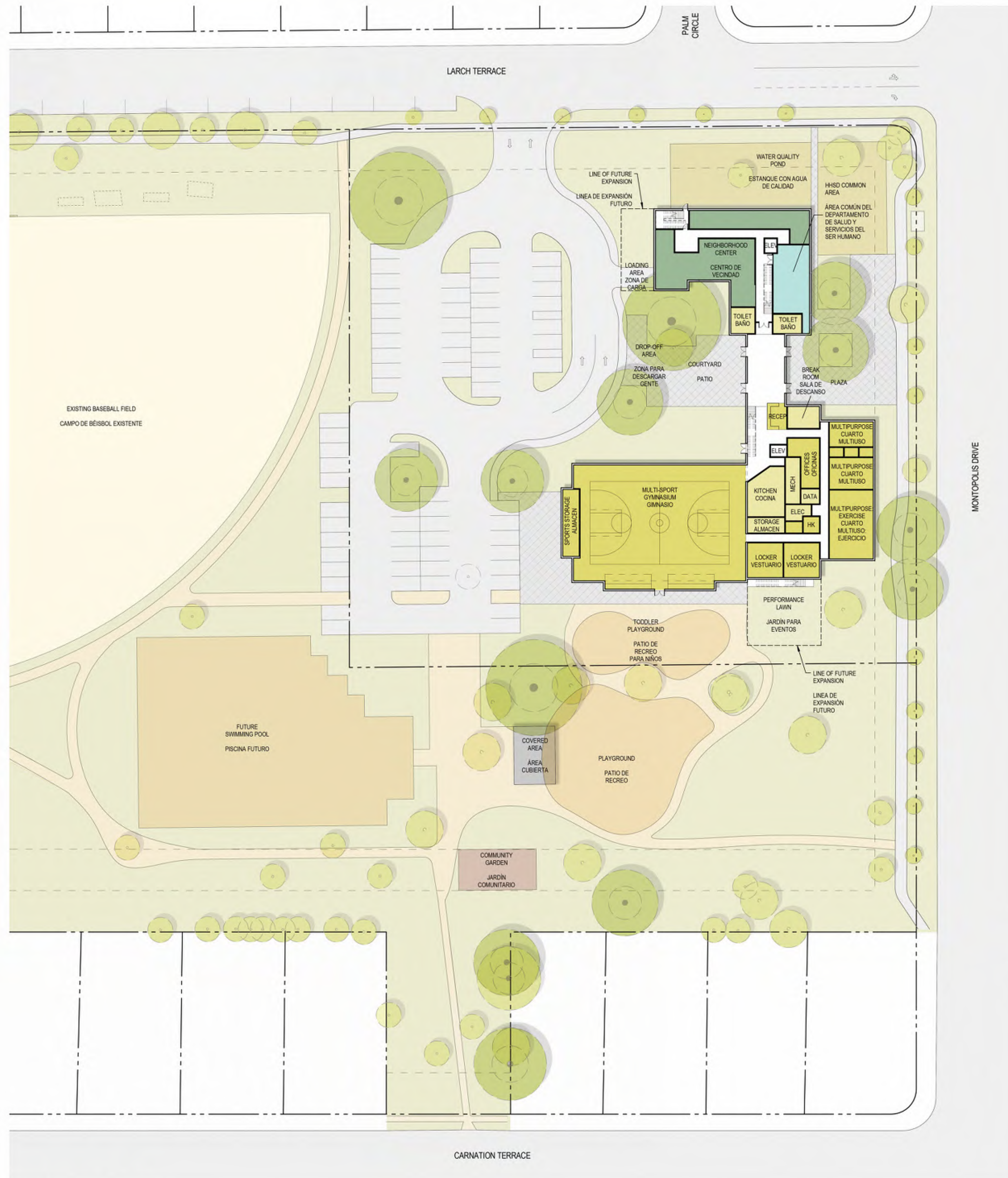
Legend Leyenda

- Recreation Center
Centro de Recreación
- Shared Spaces
Espacios Compartidos
- Neighborhood Center
Centro de Vecindad
- Austin Healthy Adolescent Program
Programa de Jóvenes con Buena Salud de Austin
- Youth Development
Desarrollo Para la Juventud
- HHSD Common Areas
Área Común del Departamento de Salud y Servicios del Humano



Aerial Perspective from Montopolis Drive
Perspectiva Aérea desde Montopolis Drive

Recreation and Community Center Project Proyecto del Centro Comunitario y Recreacional



First Floor and Site Plan
Plano - Primer Piso y Sitio

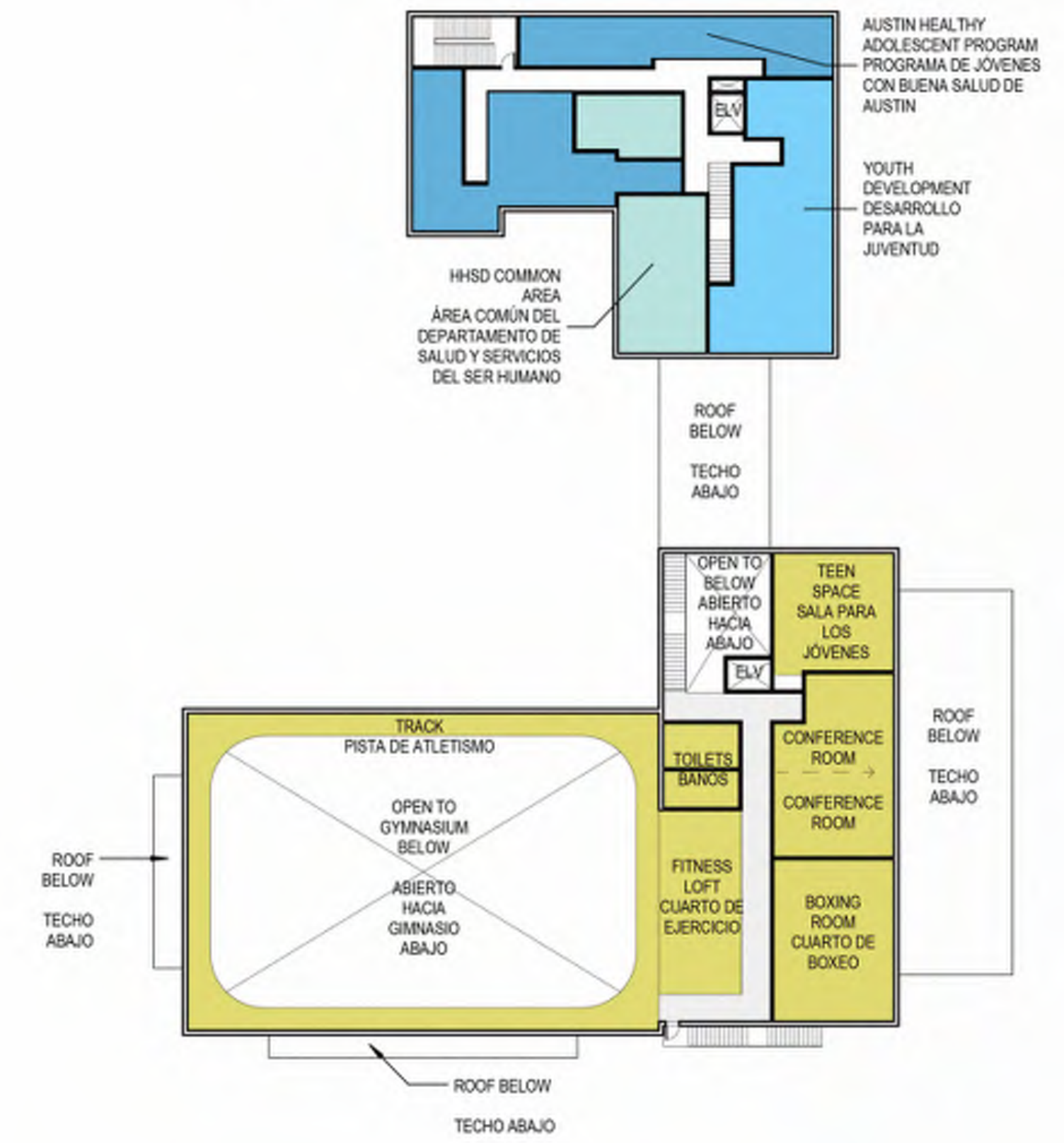
Description

- Front entry faces Montopolis
- Building located close to the corner of Larch Terrace and Montopolis
- Orientation of the entry plaza has visual connection to the Church across the street
- Parking lot entry/exit is off of Larch Terrace further away from Montopolis
- Building form creates a protected and tree-shaded courtyard and plaza
- Front and Back entry connect to a central lobby/reception area
- Long side of gymnasium faces north for daylighting potential
- Gymnasium has a connection to the outdoor spaces; courtyard to the north and playground to the south
- Multipurpose rooms line up along Montopolis to create a visual connection with the street edge
- Fitness area is adjacent to track and is open to the gymnasium
- Kitchen is convenient to both the lobby and gymnasium

Descripción

- La entrada principal hace frente a Montopolis.
- Edificio situado cerca de la esquina de Larch Terrace y Montopolis.
- La orientación de la plaza de la entrada tiene conexión visual a la iglesia a través de la calle.
- La entrada y salida del estacionamiento se ubica por Larch Terrace y lejos de Montopolis.
- La forma del edificio crea un patio y plaza protegida con árboles.
- Entrada delantera y trasera liga con un área central del lobby y de la recepción.
- El lado extenso del gimnasio está ubicado hacia el norte, aumentando la oportunidad de iluminación natural para las oficinas.
- El gimnasio tiene una conexión a los espacios al aire libre; patio al norte y patio hacia el sur.
- Los cuartos multiusos se alinean a lo largo de Montopolis para crear una conexión visual con la calle.
- Zona de ejercicio se coloca enseguida de la pista de atletismo y está abierto al gimnasio.
- La cocina es conveniente al lobby y al gimnasio.

option C



Second Floor Plan
Plano - Segundo Piso

Legend Leyenda

- Recreation Center
Centro de Recreación
- Shared Spaces
Espacios Compartidos
- Neighborhood Center
Centro de Vecindad
- Austin Healthy Adolescent Program
Programa de Jóvenes con Buena Salud de Austin
- Youth Development
Desarrollo Para la Juventud
- HHSD Common Areas
Área Común del Departamento de Salud y Servicios del Humano



Aerial Perspective from Montopolis Drive
Perspectiva Aérea desde Montopolis Drive



Name: _____

Zip Code: _____

Address: _____

Email: _____

Phone Number: _____

Your feedback is important to us! Please answer the following questions to tell us which design you prefer for the new Montopolis Recreation and Community Center. The questions are based on the community feedback received from the Adjectives Exercise earlier this winter, when we asked, "how would you like your community to describe the new Recreation and Community Center?"

1) Which option do you think is the most "inviting?"

- a. Option A
- b. Option B
- c. Option C

2) Which option do you think is the "safest?"

- a. Option A
- b. Option B
- c. Option C

3) Which option do you think is the most "respectful?"

- a. Option A
- b. Option B
- c. Option C

4) Which option do you think is the most "humble?"

- a. Option A
- b. Option B
- c. Option C

5) Which option do you think is the most "balanced?"

- a. Option A
- b. Option B
- c. Option C

6) Which option do you think is the most "innovative?"

- a. Option A
- b. Option B
- c. Option C

7) Which option do you prefer the most?

- a. Option A
- b. Option B
- c. Option C

Additional Comments:



Nombre: _____

Código Postal: _____

Dirección: _____

Correo Electrónico: _____

Teléfono: _____

¡Tu opinión es importante para nosotros! Por favor, contesta las siguientes preguntas para decirnos que diseño prefieres para el nuevo Centro Comunitario y Recreacional Montopolis. Las preguntas están basadas en retroalimentación recibida de parte de la comunidad durante el Ejercicio de Adjetivos que se llevó acabo a principios de este invierno, cuando preguntamos, "¿Cómo te gustaría que tu comunidad describiera el nuevo Centro Comunitario y Recreacional?"

1) ¿Qué opción te parece que es la más "acogedora?"

- a. Opción A
- b. Opción B
- c. Opción C

2) ¿Qué opción te parece que es la más "segura?"

- a. Opción A
- b. Opción B
- c. Opción C

3) ¿Qué opción te parece que es la más "respetuosa?"

- a. Opción A
- b. Opción B
- c. Opción C

4) ¿Qué opción te parece que es la más "humilde?"

- a. Opción A
- b. Opción B
- c. Opción C

5) ¿Qué opción te parece que es el más "balanceada?"

- a. Opción A
- b. Opción B
- c. Opción C

6) ¿Qué opción te parece que es la más "innovadora?"

- a. Opción A
- b. Opción B
- c. Opción C

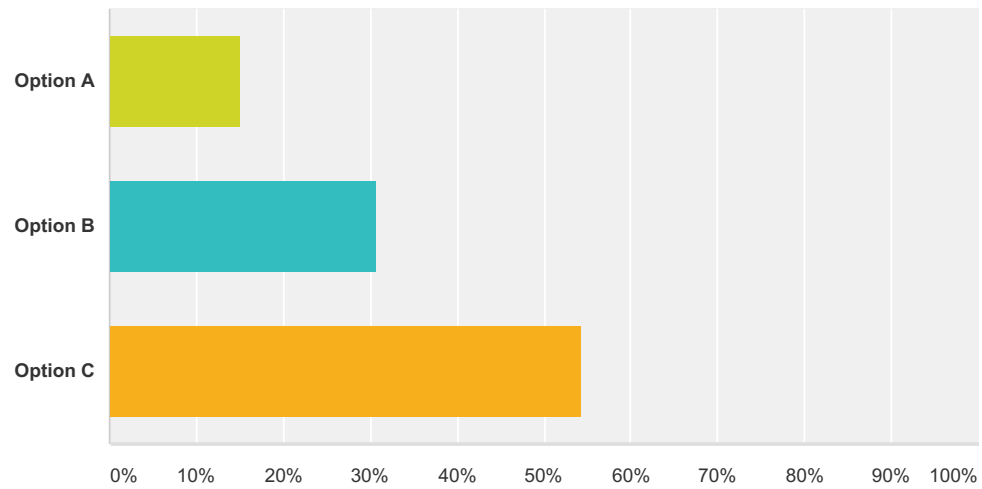
7) ¿Qué opción prefieres?

- a. Opción A
- b. Opción B
- c. Opción C

Comentarios:

Q1 Which option do you prefer the most?

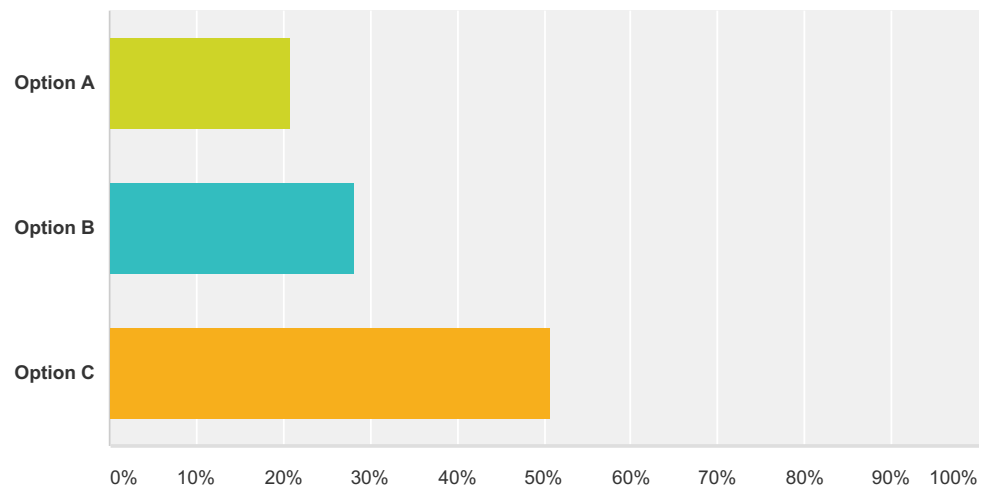
Answered: 186 Skipped: 7



Answer Choices	Responses	
Option A	15.05%	28
Option B	30.65%	57
Option C	54.30%	101
Total		186

Q2 Which option do you think is the most “inviting?”

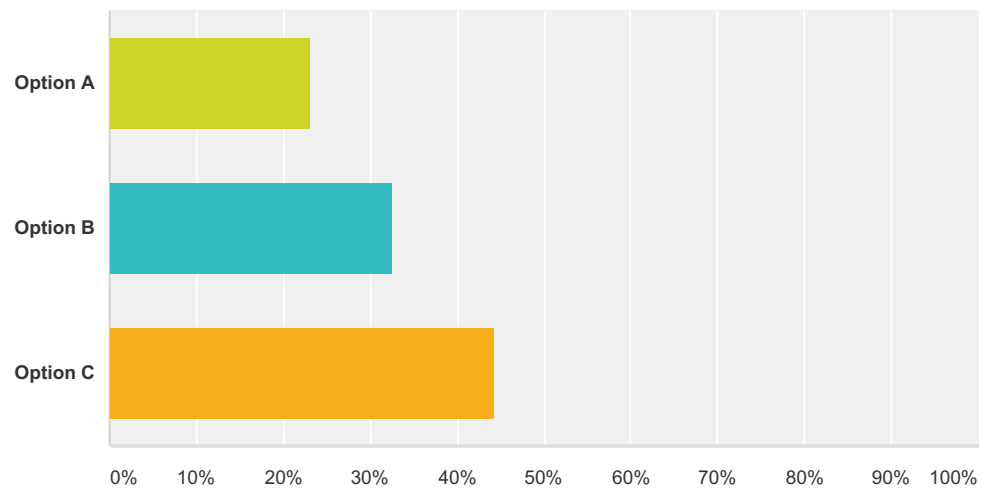
Answered: 191 Skipped: 2



Answer Choices	Responses	
Option A	20.94%	40
Option B	28.27%	54
Option C	50.79%	97
Total		191

Q3 Which option do you think is the "safest?"

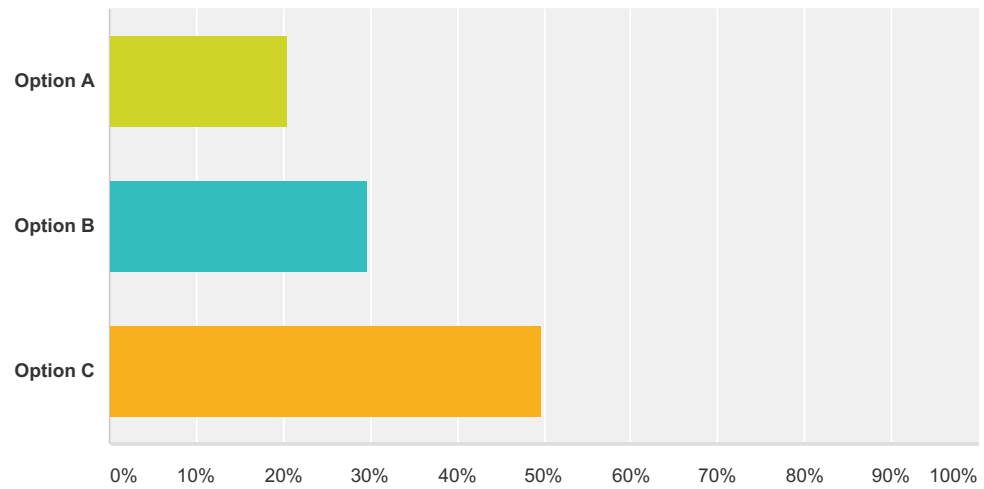
Answered: 190 Skipped: 3



Answer Choices	Responses	
Option A	23.16%	44
Option B	32.63%	62
Option C	44.21%	84
Total		190

Q4 Which option do you think is the most "respectful?"

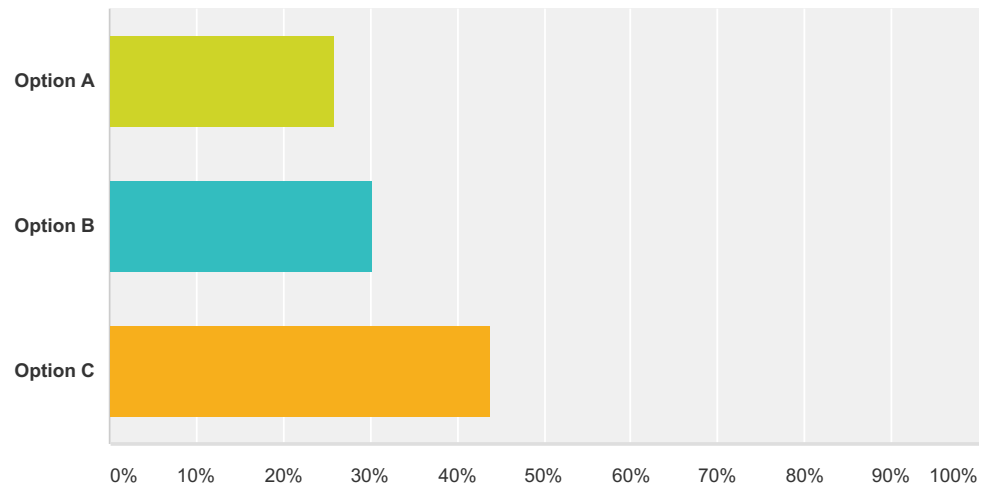
Answered: 185 Skipped: 8



Answer Choices	Responses	
Option A	20.54%	38
Option B	29.73%	55
Option C	49.73%	92
Total		185

Q5 Which option do you think is the most "humble?"

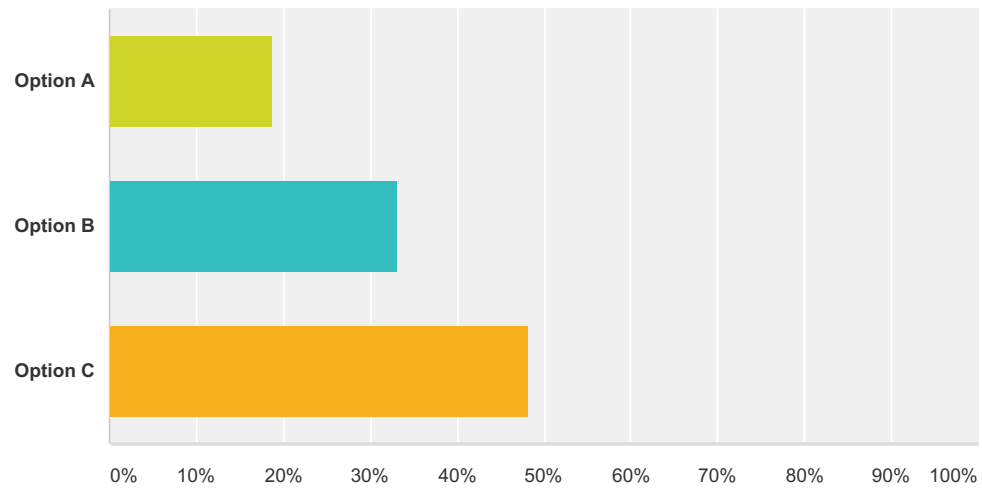
Answered: 185 Skipped: 8



Answer Choices	Responses	
Option A	25.95%	48
Option B	30.27%	56
Option C	43.78%	81
Total		185

Q6 Which option do you think is the most "balanced?"

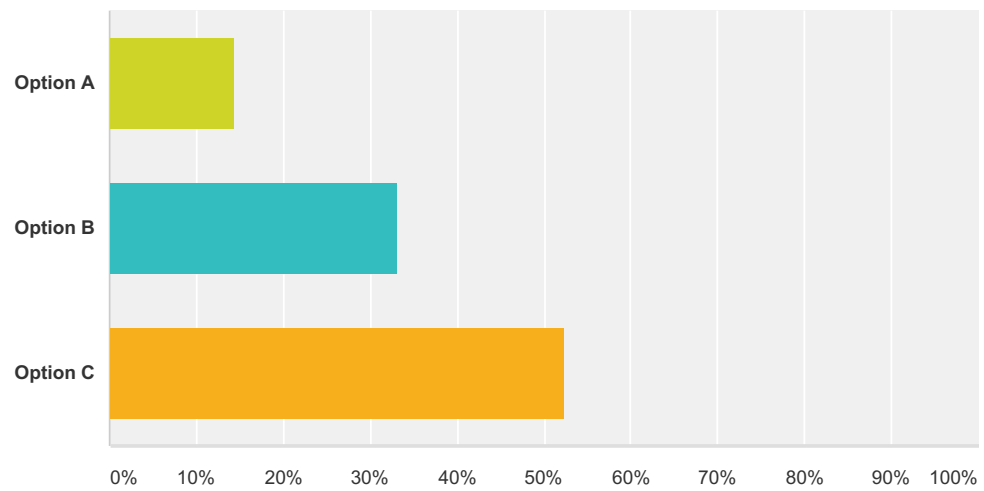
Answered: 187 Skipped: 6



Answer Choices	Responses	
Option A	18.72%	35
Option B	33.16%	62
Option C	48.13%	90
Total		187

Q7 Which option do you think is the most "innovative?"

Answered: 187 Skipped: 6



Answer Choices	Responses	
Option A	14.44%	27
Option B	33.16%	62
Option C	52.41%	98
Total		187