



Public Parks Master Plan for The Grove at Shoal Creek

Public Meeting #1

March 21, 2017

Meeting 1 Agenda

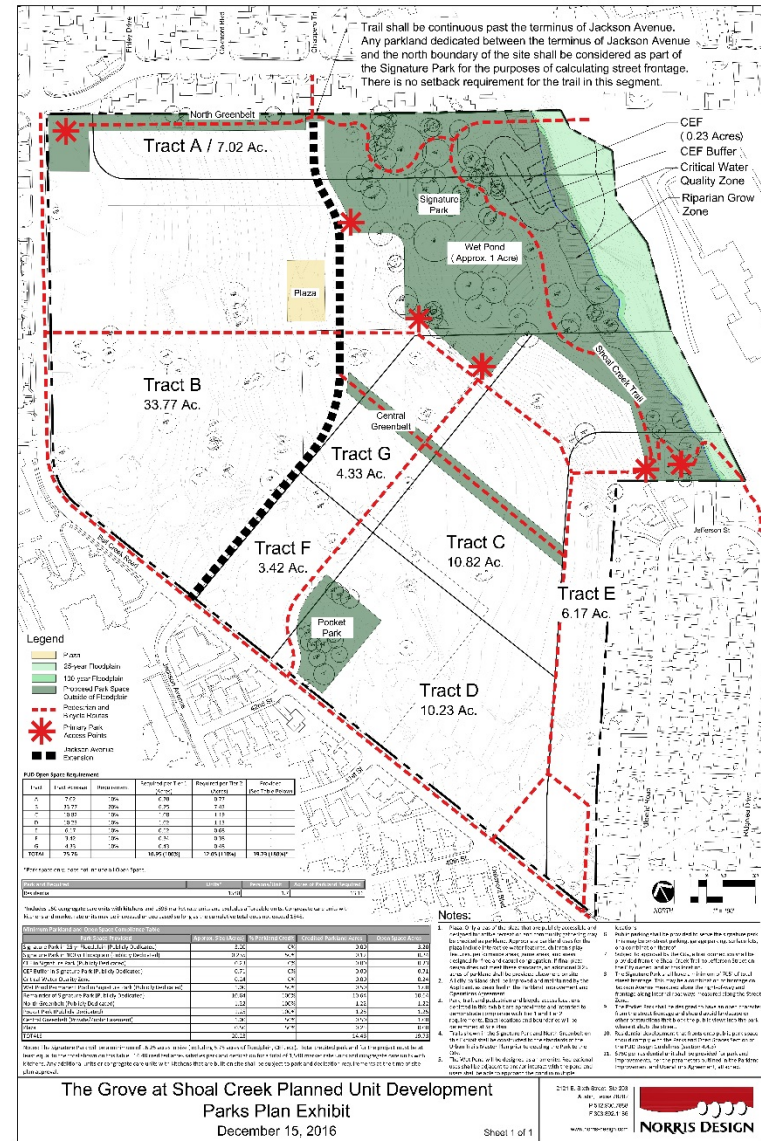
Item	Duration	Leader
Introduction <ul style="list-style-type: none">• Purpose• Parameters of PUD Approval• Roles & Responsibilities	5 min	PARD
Existing Conditions Review <ul style="list-style-type: none">• Location & Context• Physical Conditions & Constraints	10 min.	Norris Design
Precedent Park Review	10 min.	ARG
Stakeholder Brainstorm	15 min.	ARG
Brainstorm Organization/Categorization	15 min.	ARG
Report Back	25 min.	ARG
Next Steps	5 min.	ARG

Purpose

- The Public Parks Master Plan for The Grove at Shoal Creek is being developed by the property owner in collaboration with the Parks and Recreation Department (PARD) with input from the community. The project goal is to develop a Master Plan for the public parks at The Grove at Shoal Creek including the 16.25-acre Signature Park and the Pocket Park in compliance with City Parkland Improvement and Operations Agreement for The Grove at Shoal Creek Planned Unit Development (PUD).
-

Parameters of the PUD

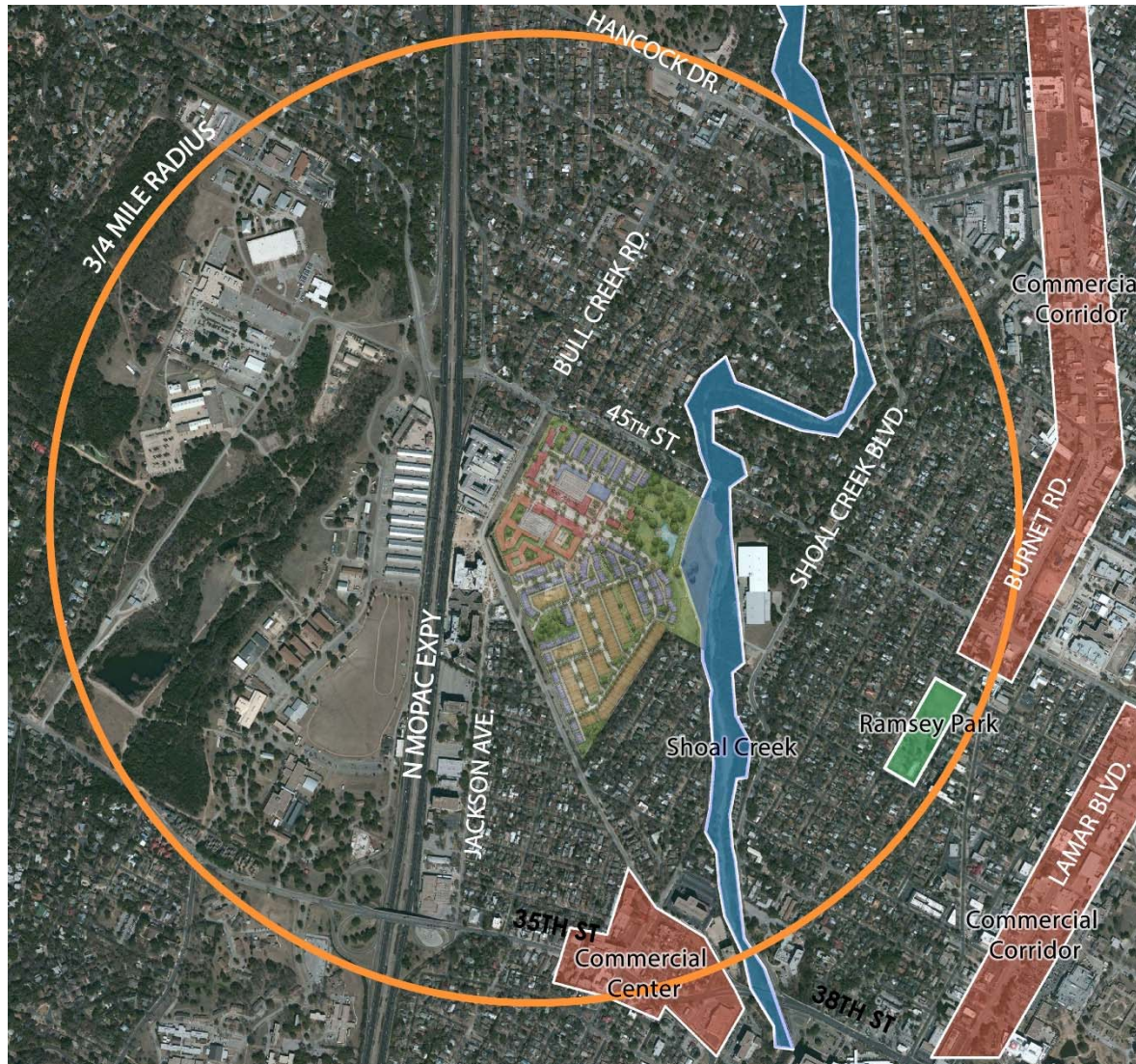
- Signature Park is a minimum of 16.25 acres
- Signature Park will have a minimum of 705 LF of street frontage
- Pocket Park is approximately 1.25 acres
- Master Plan will include
 - Information on existing environmental conditions
 - Proposed easements for the pond and access and utilities
 - Demographic analysis of surrounding community
 - Community Input
 - Park Amenities, location, and programming
- Park improvements shall include
 - Shoal Creek concrete Urban Trail
 - Connection from Jefferson Street
 - Active recreational amenities for all ages
 - Multi-purpose field area



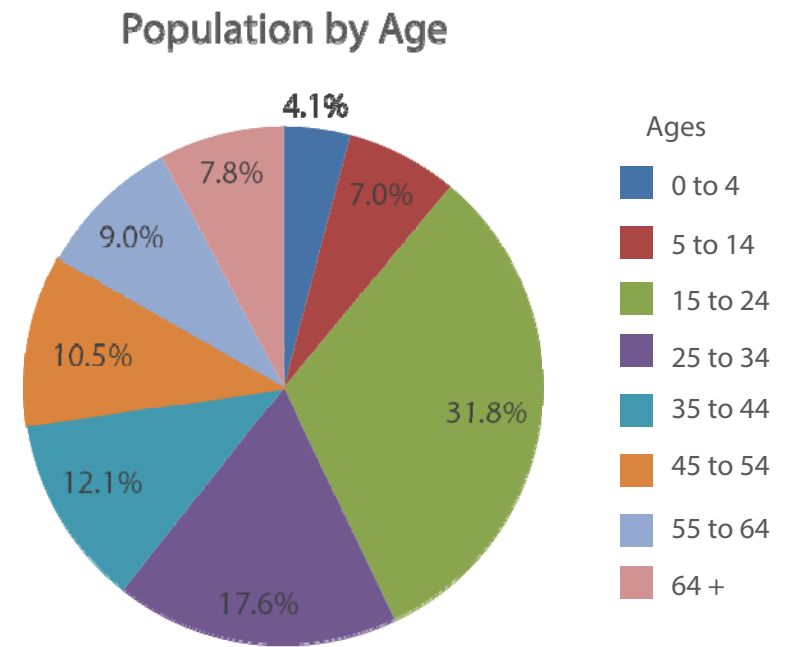
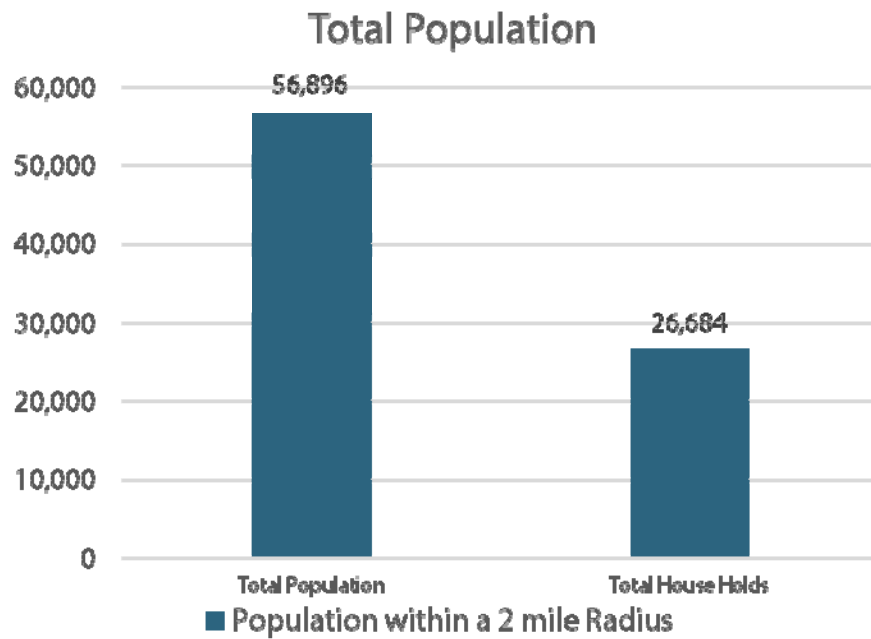
Roles and Responsibility

- Property Owner (ARG/Property Owner's Association)
 - Develop a Public Parks Master Plan in consultation with PARD and the community
 - Construct Improvements required in the PUD and detailed in the approved Master Plan (Shoal Creek Trail, pond, bridge, pedestrian connections, and approximately \$1 million in additional improvements)
 - Publicly Dedicate the public parks after improvements are completed
 - Ongoing maintenance of the parks
 - Parks and Recreation Department (PARD)
 - Assist in facilitating the public outreach process
 - Collaborate with ARG and the community to develop the Public Parks Master Plan
 - Approval of the Public Parks Master Plan
 - Review and Approval of subsequent site plans
 - Permanent Ownership of Public Parklands
 - Management Committee
 - Includes representatives of PARD, ARG, The Property Owners Association, and the surrounding community
 - Approves Annual Management Plan for park maintenance
 - Approves Annual Programming Plan for programming and special events
-

Park Location



Demographics



Park Context



Existing Conditions



Existing Conditions



Discovery Green

- Location: Houston, Texas
- Size: 12 acres
- Amenities: Interactive fountain, Great Lawn, Playground, Botanical Gardens, Landform Amphitheater, Outdoor Stage, Pond and Water Gardens, Restaurant, and Café.



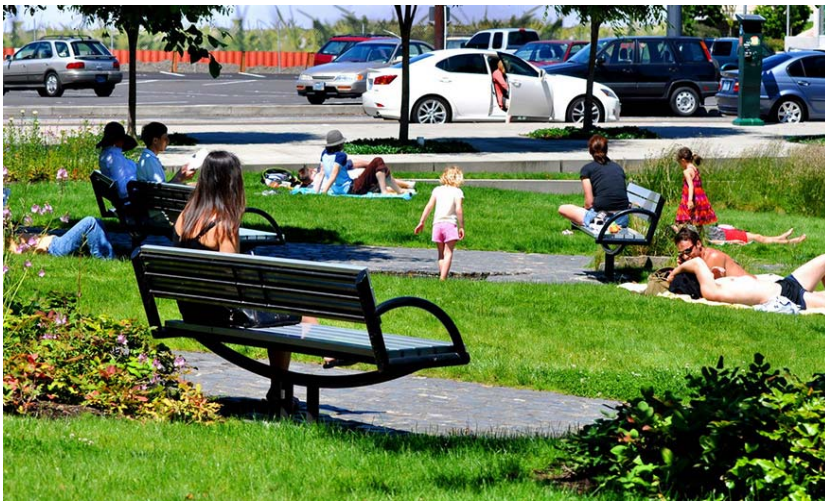
Discovery Green

- Location: Houston, Texas
- Size: 12 acres
- Amenities: Interactive fountain, Great Lawn, Playground, Botanical Gardens, Landform Amphitheater, Outdoor Stage, Pond and Water Gardens, Restaurant, and Café.



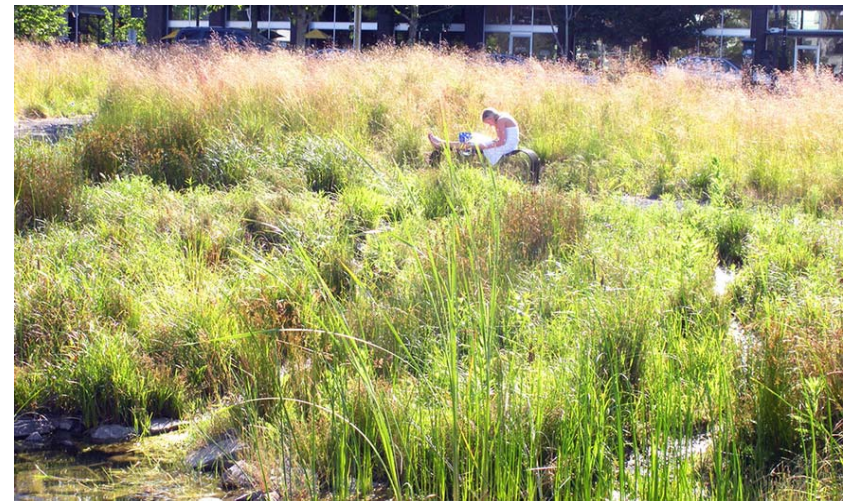
Tanner Springs Park

- Location: Portland, Oregon
- Size: 1 acre
- Amenities: Wetlands, Art Wall, Floating Deck, Children's Splash and Explore, Seating Steps, Cobbled Paths, and Seating Nodes.



Tanner Springs Park

- Location: Portland, Oregon
- Size: 1 acre
- Amenities: Wetlands, Art Wall, Floating Deck, Children's Splash and Explore, Seating Steps, Cobbled Paths, and Seating Nodes.



Tongva Park

- Location: Santa Monica, California
- Size: 6 acres
- Amenities: Walking Paths, Open Lawn, Natural Amphitheater, Children's Discovery Play Area with Splash Pad, Shaded Picnic Areas, Art Installations, Gardens, and Overlook..



Tongva Park

- Location: Santa Monica, California
- Size: 6 acres
- Amenities: Walking Paths, Open Lawn, Natural Amphitheater, Children's Discovery Play Area with Splash Pad, Shaded Picnic Areas, Art Installations, Gardens, and Overlook..



Klyde Warren Park

- Location: Dallas, Texas
- Size: 5.2 acres
- Amenities: Promenade, Great Lawn, Plaza, Covered Seating Areas, Performance Pavilion, Children's Parks with Interactive Water Features, Reading and Games Room, Putting Green, Pet Friendly Area, Botanical Garden, and a Restaurant.



Klyde Warren Park

- Location: Dallas, Texas
- Size: 5.2 acres
- Amenities: Promenade, Great Lawn, Plaza, Covered Seating Areas, Performance Pavilion, Children's Parks with Interactive Water Features, Reading and Games Room, Putting Green, Pet Friendly Area, Botanical Garden, and a Restaurant.



Mueller Lake Park

- Location: Austin, Texas
- Size: 30 acres
- Amenities: Historic Hangar, Water Quality Pond, Amphitheater, Lake Overlook, Open Lawn, Hike and Bike Trail Loop, Art Installations, Food Truck Area, Playground, Picnic Areas, and a Park Pavilion.



Mueller Lake Park

- Location: Austin, Texas
- Size: 30 acres
- Amenities: Historic Hangar, Water Quality Pond, Amphitheater, Lake Overlook, Open Lawn, Hike and Bike Trail Loop, Art Installations, Food Truck Area, Playground, Picnic Areas, and a Park Pavilion.



Stakeholder Brainstorm

1. Brainstorm Needs and Desires

Open level lawn
areas

Build community
by partnering
with local
organizations

Playground

Stakeholder Brainstorm

2. Organize into Categories

Goals

Encourage active recreation

Build community by partnering with local organizations

Amenities

Open level lawn areas

Plaza space for Farmers Market

Programs

Exercise and yoga groups on open lawn

Partnership with local farmers market, such as Sustainable Food Center



Stakeholder Brainstorm

3. Report Back

Next Steps

- Public Meeting #2 | Monday April 24, 2017
 - Review results of this meeting
 - Present resulting Goals and Program
 - Present and discuss conceptual Master Plan / Vision Plan alternatives for park
- Public Meeting #3 | Tuesday May 30, 2017
 - Review results from Meeting #2
 - Update Goals, Program, and Vision Plan
 - Present and discuss preferred Master Plan
- Completion and approval of Master Plan anticipated this summer.

For more information, questions or to view this presentation again:
Visit www.austintexas.gov/parksatthegrove or contact Charles Mabry,
charles.mabry@austintexas.gov, 512.974.9481
