



CITY OF AUSTIN PUBLIC WORKS

# PRESENTATION OF BURNET “BLONDIE” PHARR TENNIS CENTER RENOVATION



**PUBLIC  
WORKS**

# PRESENTATION OUTLINE

---

1. Welcome and Survey
2. Introduction of City of Austin Project Team
3. Project Background and Process
  - Promise to Public
  - Project Purpose/ Decision makers
  - Tennis Background
  - Overall Goals
  - Introduction of Consultant Team
4. Site Information and Site Studies
  - Feasibility Study: Infrastructure Key Findings + Site Analysis
  - Critical Project Constraints
  - Feasibility Study: Design Phase Drawings
5. Schedule
6. Project Questions + Answers
7. Art in Public Places (AIPP)
  - AIPP Questions + Answers

# CITY OF AUSTIN PROJECT TEAM

**George Maldonado**, Parks and Recreation Department,  
Project Manager, Development Division

**Audra Biediger**, Public Works Department,  
Project Manager, Architectural Project Management Division

**Lonnie Lyman**, Parks and Recreation Department,  
Event Coordinator Senior

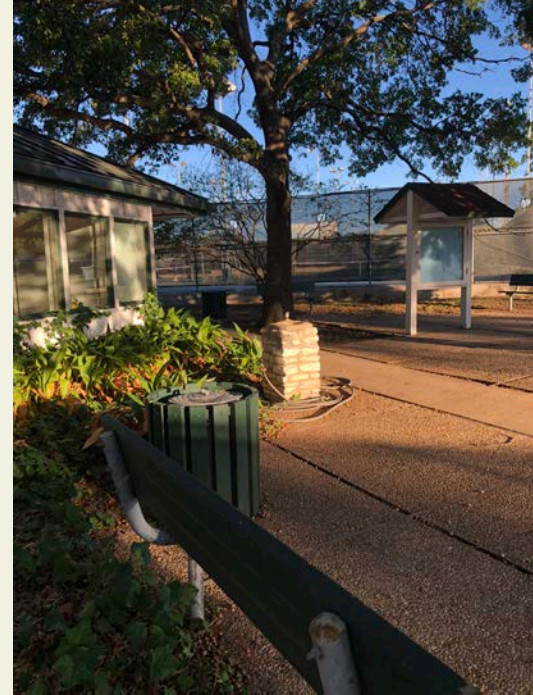
**Justin Schneider**, Parks and Recreation Department,  
Community Engagement Specialist

**Alex Irrera**, Economic Development Department,  
Art in Public Places Coordinator



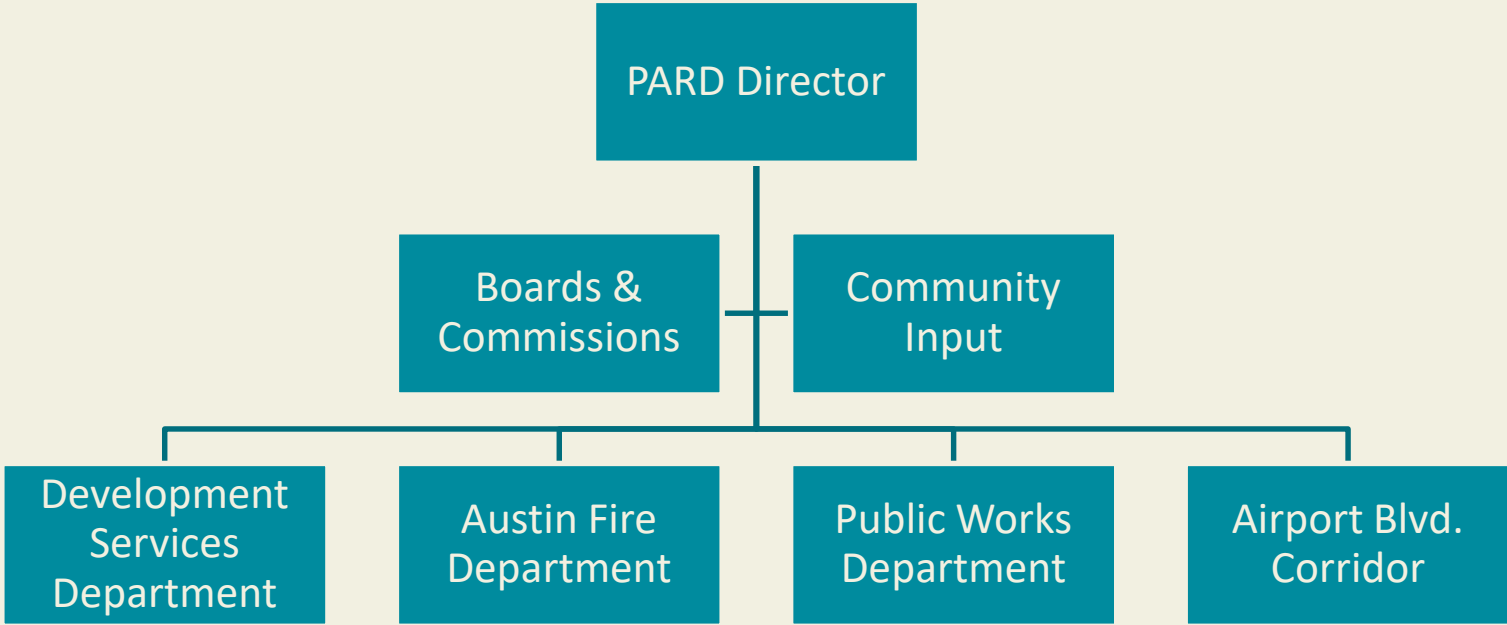
# Promise To The Public

*We will keep you informed, listen and acknowledge concerns and aspirations, and provide feedback on how community input influenced decisions.*



# DECISION MAKERS

## CITY APPROVALS AND REVIEW BOARDS



# PROJECT PURPOSE

The project seeks to renew the forty-plus year tennis courts and pro shop building facility with new improvements meeting accessibility compliance and address various site issues.

---



# BRIEF HISTORY



# PROJECT GOALS

In addition to the renovation of the existing Tennis Pro Shop and existing tennis courts, this project sets out to meet these goals:

---

- Make all areas of the site accessible
- Eliminate flood issues within the Pro Shop and the tennis courts
- Achieve LEED Silver as required by City Ordinance
  - Focusing on reduction of water and power usage, sites credits (protect and restore landscape, open spaces, night sky, rainwater management) and improve storm water retention and quality.
- Be a good steward of city budget and resources
- Community Engagement throughout the design process to keep users and Neighborhood informed
- AIPP will engage with the Community for Artwork Design Process



# FEASIBILITY STUDY

## INFRASTRUCTURE KEY FINDINGS + SITE ANALYSIS

### CONTENTS

---

- Site Flooding Map
- Site Access Map
- Environmental Improvements / LEED (Leadership in Energy & Environmental Design)
- Airport Improvements

# SITE FLOODING

- Lack of on-site water detention
- On-site waterflow = south/southwest

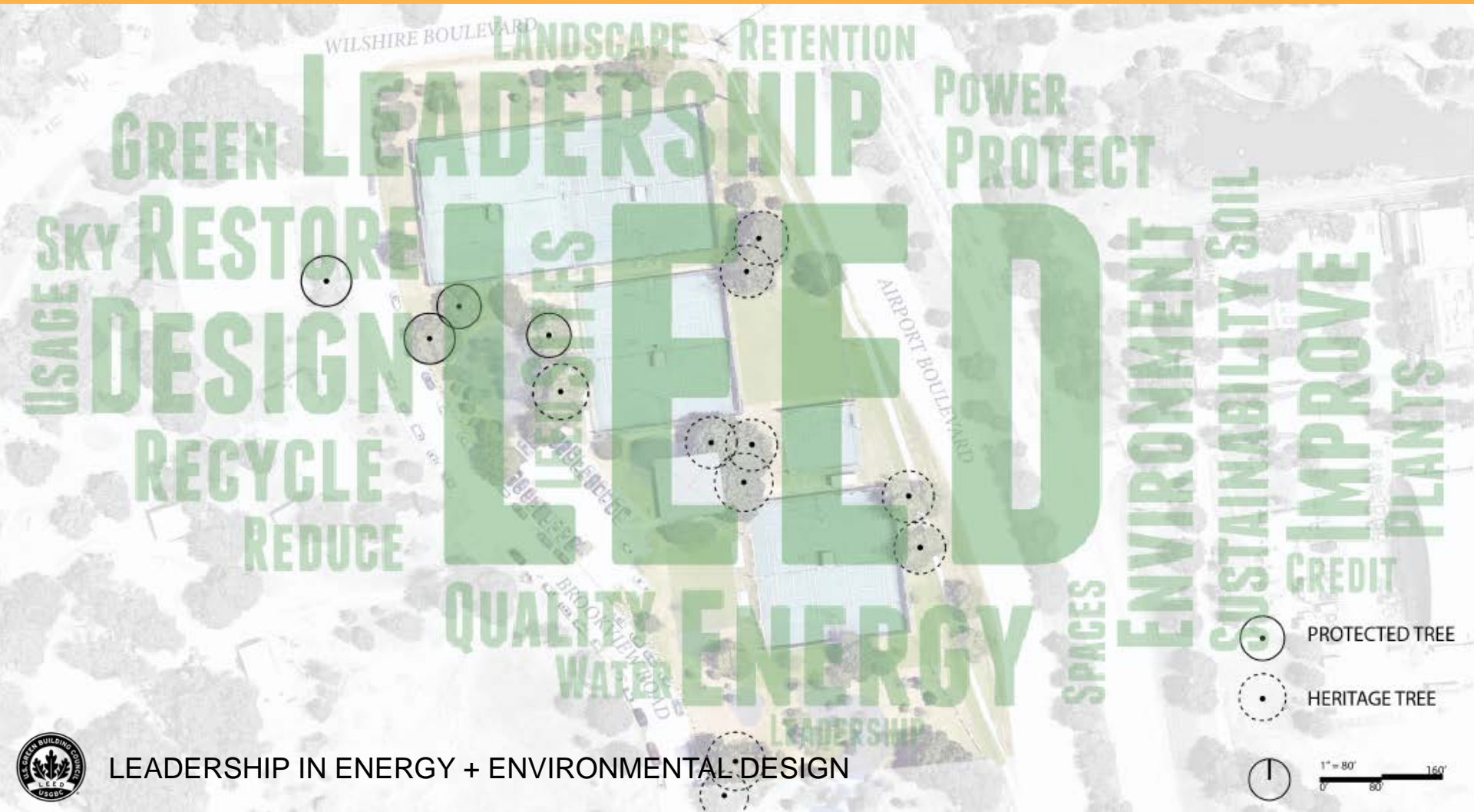


# SITE ACCESS



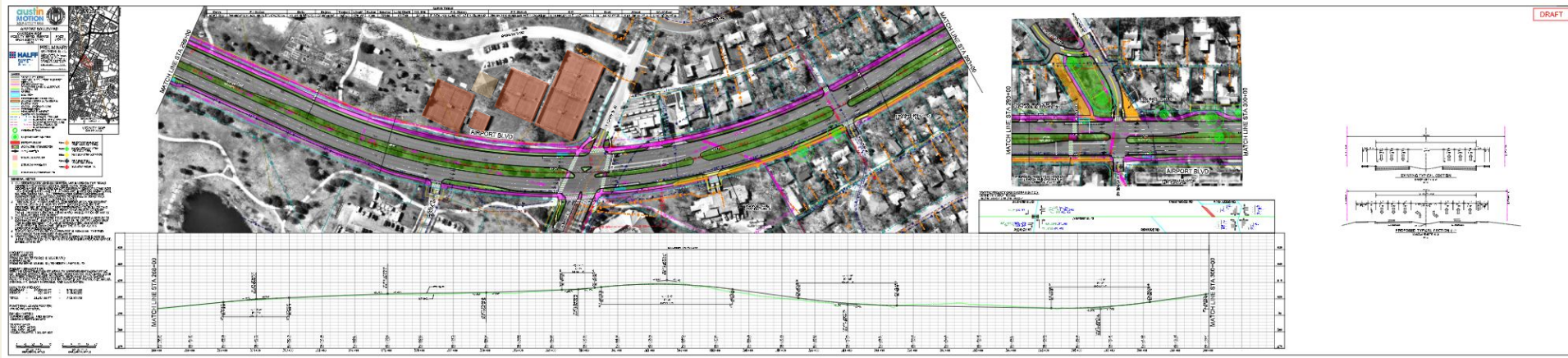


# ENVIRONMENTAL IMPROVEMENTS



LEADERSHIP IN ENERGY + ENVIRONMENTAL DESIGN

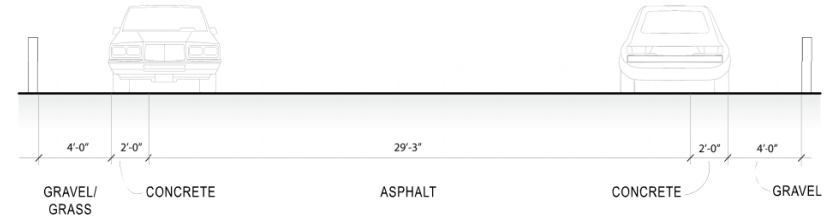
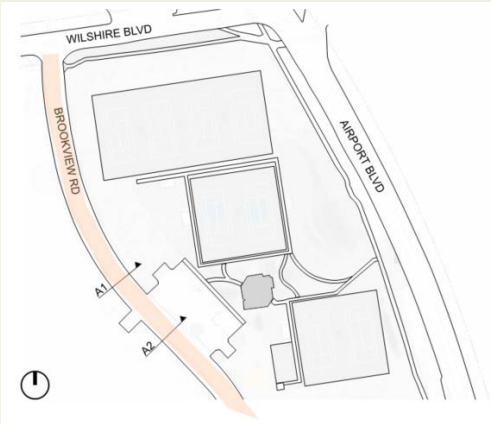
# AIRPORT IMPROVEMENTS



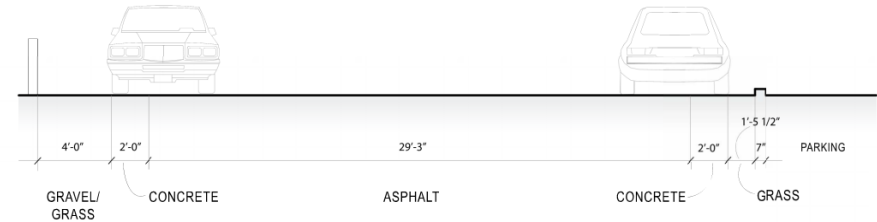
1. New Curb + Gutter on Airport, Improve Drainage
2. New Shared Use Path – 8'-12' Wide, Bikes + Pedestrian
3. New Landscape Buffer – 8'-12' Wide, between Airport and Shared Use Path
4. New Signalization – early 2021 DSD Review

# CRITICAL PROJECT CONSTRAINTS

- \$ 2 Million Budget
- Fire and ADA Access
- Site Permit Timeline – 9 Months



Section A1



Section A2

# SCHEMATIC DESIGN PROPOSAL

## DESIGN PHASE DRAWINGS

### CONTENTS

---

- Landscape Site Plan
- Landscape Design Images
- Landscape Plants
- Civil Site Plan
- Pro-Shop Demo Plan
- Pro-Shop Plan



# LANDSCAPE SITE PLAN



# LANDSCAPE DESIGN IMAGES



Rain Garden



Example of artistic re-use of existing concrete from site



Meadow – Wildflower Planting



Bio Swale



Courtyard – Decomposed Granite



Meadow – Wildflower Planting



# PLANTING PALETTE

## Planting Palette Raingarden Plants



MUHLY, GULF



BIG MUHLY



LITTLE BLUESTEM



SEA OATS



PANICUM



BALD CYPRESS



RED TURKS CAP

## Planting Palette Meadow Plants



PURPLE CONEFLOWER



GALLARDIA



BEE BALM



LIATRIS



LITTLE BLUESTEM



INDIAN GRASS



SIDE OATS GRAMMA

## Planting Palette Courtyard/Tennis Center Plants



POSSUM HAW HOLLY



MEXICAN PLUM



ANACACHO ORCHID



RED YUCCA



SEA OATS



TURKS CAP



BIG MUHLY

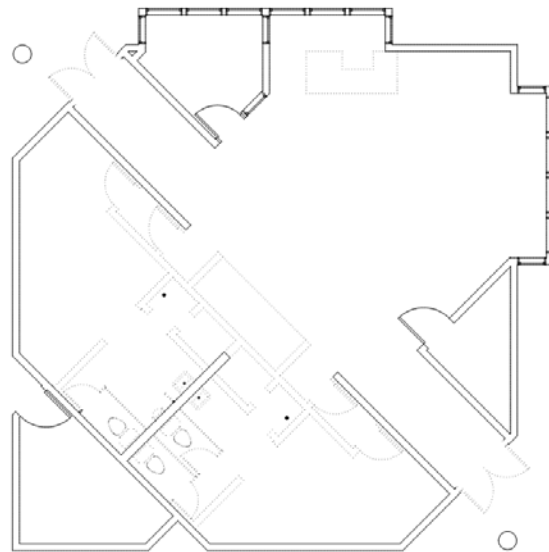
# CIVIL SITE PLAN



# EXISTING PROSHOP PLAN



1 EXISTING FLOOR PLAN



1 DEMOLITION PLAN



- EXISTING TO BE REMOVED
- == EXISTING TO REMAIN

# PROPOSED PROSHOP PLAN





# EXISTING PROSHOP





# MATERIAL RE-USE



REFINISHED, REINSTALLED WOOD PANELING



# SALES & DISPLAY



SALES DISPLAY



REFINISHED CORK



# SALES & SERVICES



**SALES**



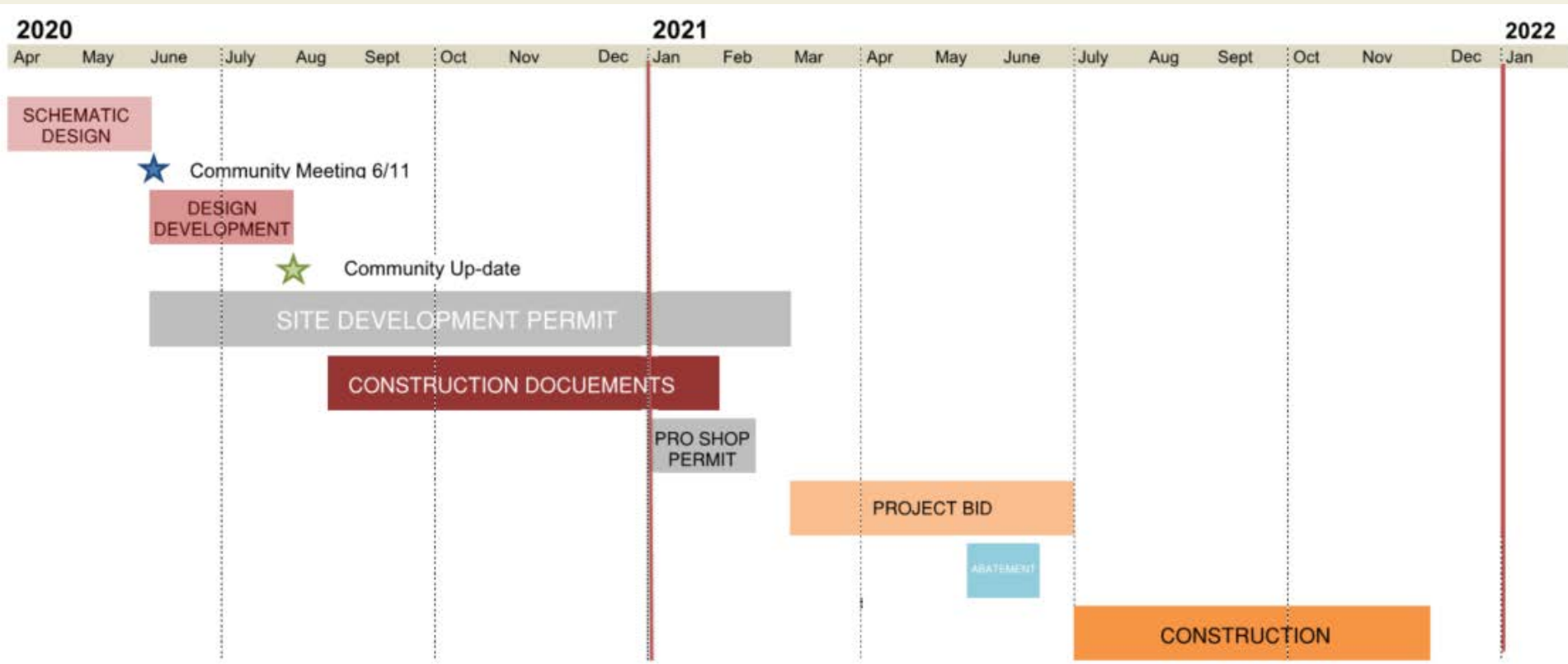
**EXISTING SERVICE**



**SALES DESK AS KIOSK**



# ANTICIPATED SCHEDULE







# QUESTIONS + ANSWERS

---

CITY OF AUSTIN  
PUBLIC WORKS DEPARTMENT  
CONNECTING YOU ALL AROUND AUSTIN



**PUBLIC  
WORKS**

# Art in Public Places Program



CULTURAL ARTS DIVISION

---

CITY OF AUSTIN ECONOMIC DEVELOPMENT DEPARTMENT

JUNE 2020

PHARR TENNIS CENTER



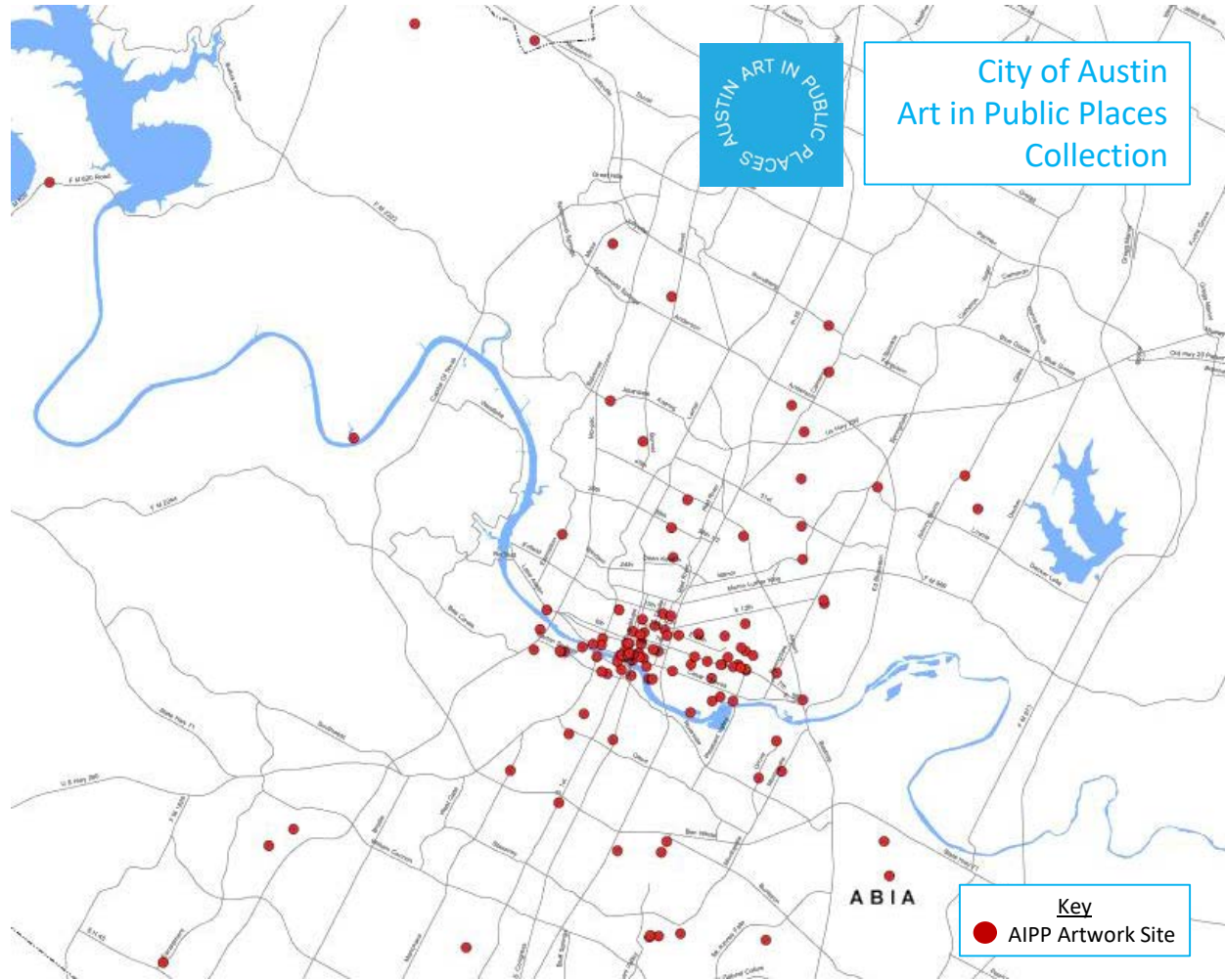
# AIPP Ordinance

Launched in 1985

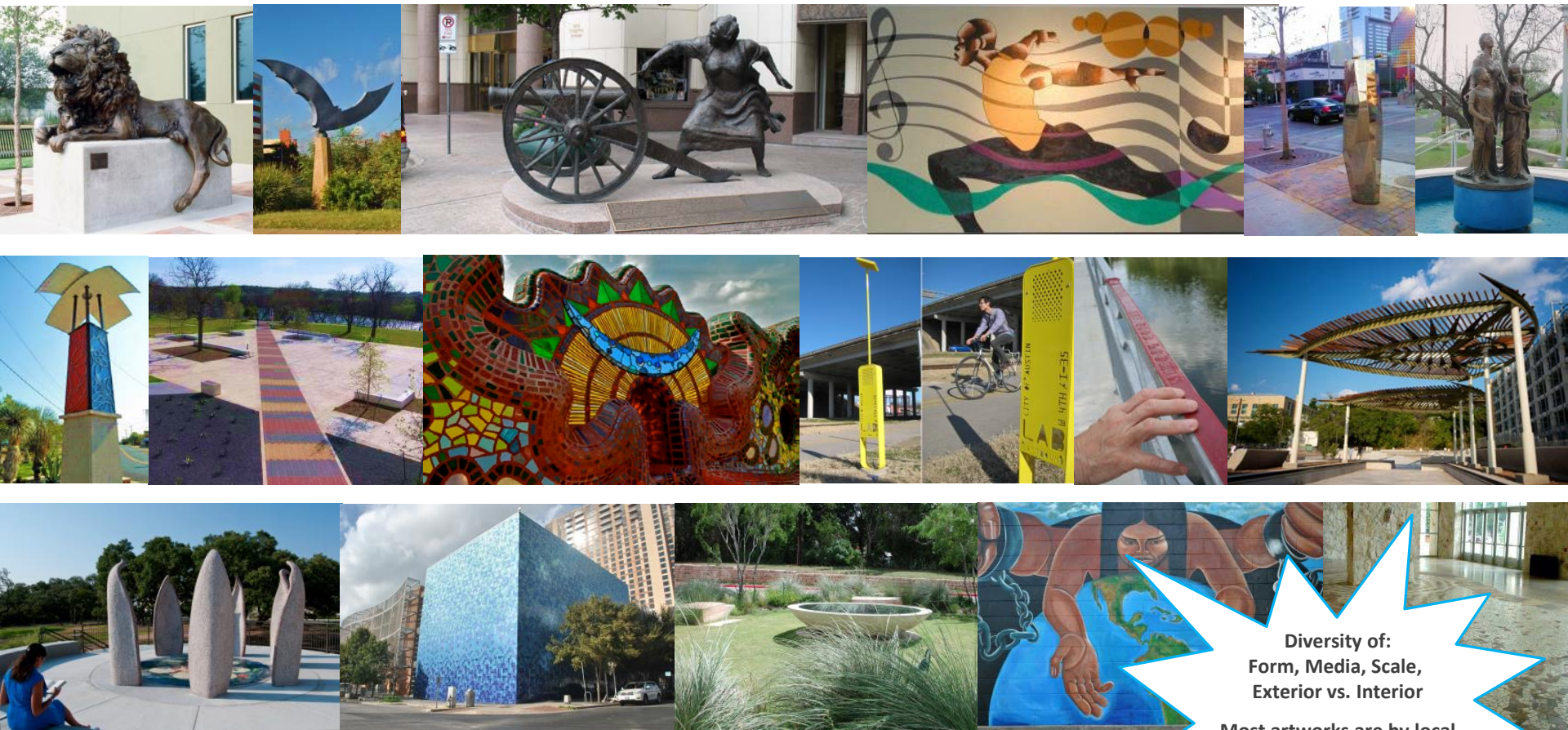
2% of eligible CIP

City Improvement Project (CIP)  
eligible = buildings, parks,  
streetscapes, bridges and more

- *Artwork must be sited at funding project/facility*
- *AIPP staff works with the AIPP Panel, sponsor department staff (e.g. the Parks Department), project teams, and the community*







Diversity of:  
Form, Media, Scale,  
Exterior vs. Interior

Most artworks are by local  
artists!

## Austin's Art in Public Places Collection

# AIPP Process Snapshot



## PUBLIC INPUT KEY

Box 2 = Community input is used to write artwork goals

Box 5 = Community input on artist selection via project advisor(s)

Box 9 = Artist's community engagement

Box 10 = Opportunity for community feedback before final artwork design approval

Box 11 = Community can attend the final design approval meetings



OPPORTUNITY FOR PUBLIC INPUT

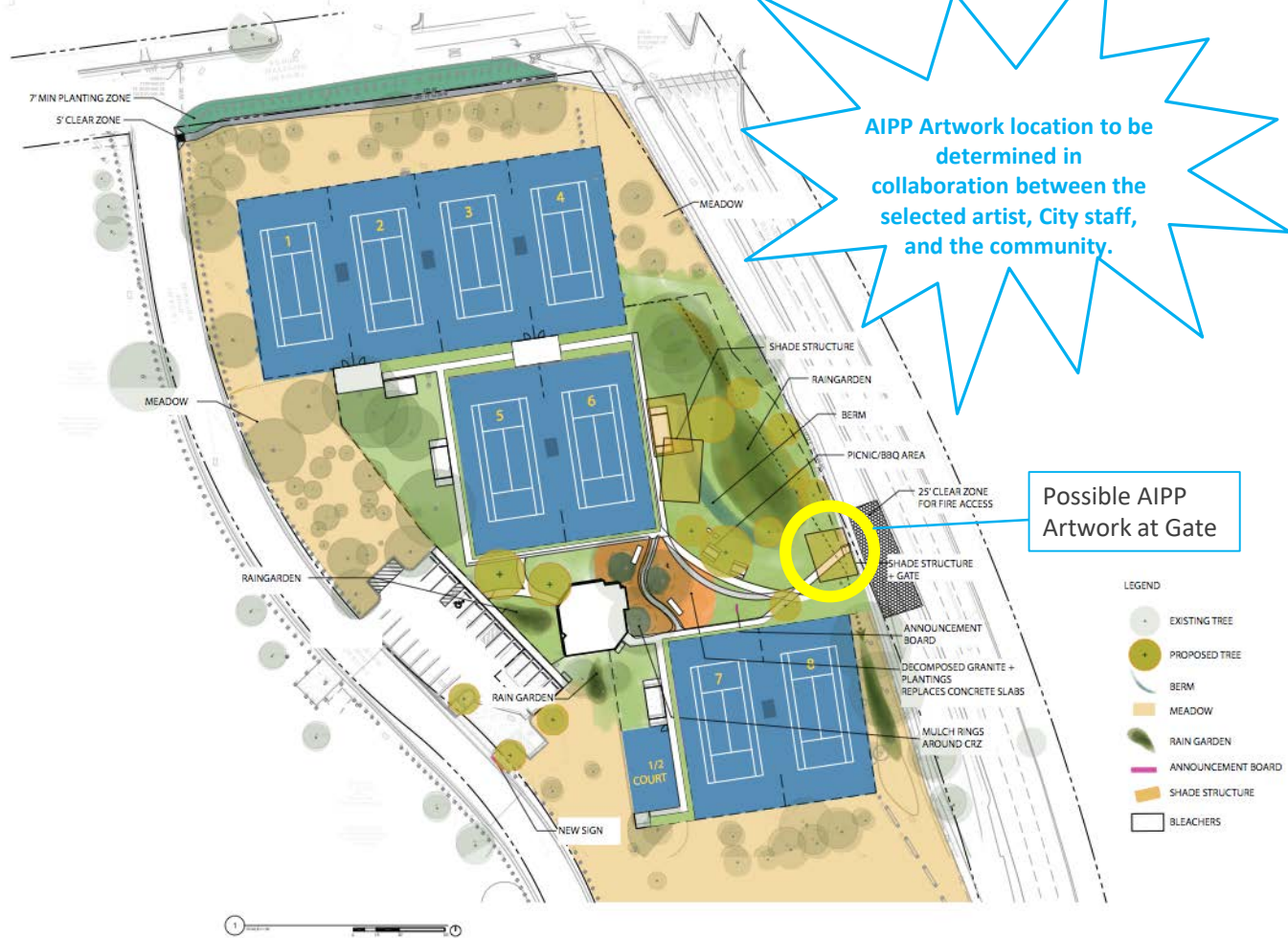
# Pharr Tennis Center – AIPP Project

---

ART BUDGET: \$30,000



**ART BUDGET:  
\$30,000**







# AIPP Artwork – Inspiration

---

COMMUNITY INPUT NEEDED!

# Think about what you would like the artwork to express...

What is **important** to your community?

What might you want include to **help guide the artist** when he or she is creating art for Pharr Tennis Center?

## Now share some words with me!

What **values or qualities** are you hoping for—visibility, aesthetic appeal, celebration, health and activity, curiosity?



## Public art should...

Write down 3 words to describe how artwork can enhance the Pharr Tennis Center:



# Questions?

---



Alex Irrera

Art in Public Places Project & Collection Manager

➔ [alex.irrera@austintexas.gov](mailto:alex.irrera@austintexas.gov)

512.974.7860

## Stay Connected:

- Art in Public Places Monthly Newsletter
- Cultural Arts Division Monthly Newsletter
- [www.facebook.com/AustinAIPP](http://www.facebook.com/AustinAIPP)
- [www.austincreates.com](http://www.austincreates.com)

*Art goal input due  
Sunday, June 21!*

# THANK YOU!



# QUESTIONS + ANSWERS

---

CITY OF AUSTIN  
PUBLIC WORKS DEPARTMENT  
CONNECTING YOU ALL AROUND AUSTIN

---

George Maldonado, PARD Project Manager  
PARD Development  
[Geore.Maldonado@austintexas.gov](mailto:Geore.Maldonado@austintexas.gov)  
512.974.9525



**PUBLIC  
WORKS**