

DESIGN REVIEW

Concept A

10TH STREET
Visually connect to the courthouse and extend the walk for a flexible event space

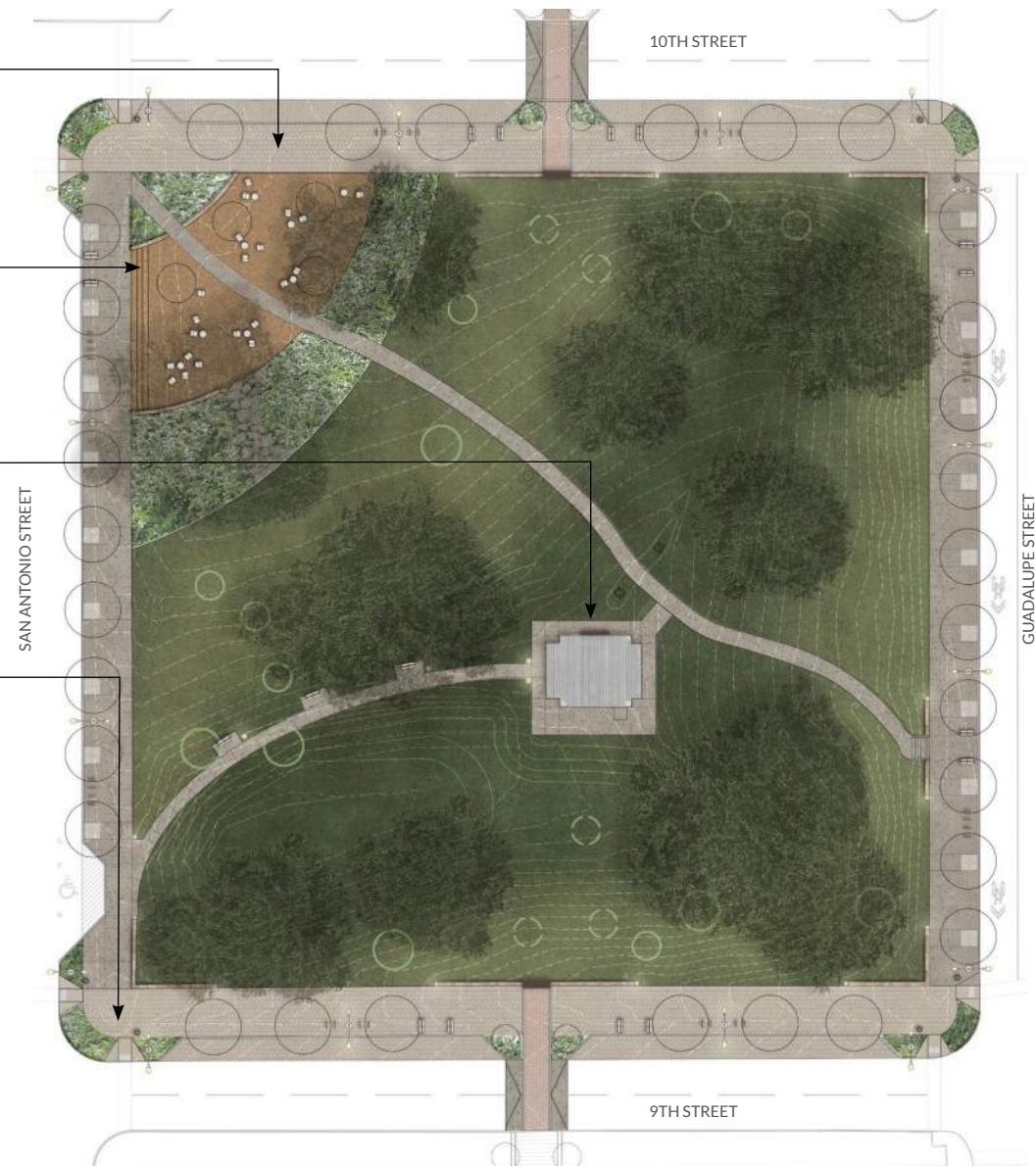
COMMUNITY SPACE
Expand the existing plaza and connect to San Antonio Street

HISTORIC BANDSTAND
Provide a modest ADA path to the Bandstand and historic walk

9TH STREET
Activate the edges with Great Streets design principles

INTERPRETIVE SIGNAGE
Reveal the history of Wooldridge Square

LIGHTING
Enhance site lighting to promote safety and visibility





10th Street

support the Square's presence in the community

A. 18' Civic Promenade

Parallel parking on both sides of 10th Street with upgraded paving, street trees and furnishings support a pedestrian friendly experience

B. 18" Vertical Element for Interpretive Signage

C. Vendor Parking Zone

Temporary pull-in, pull-out

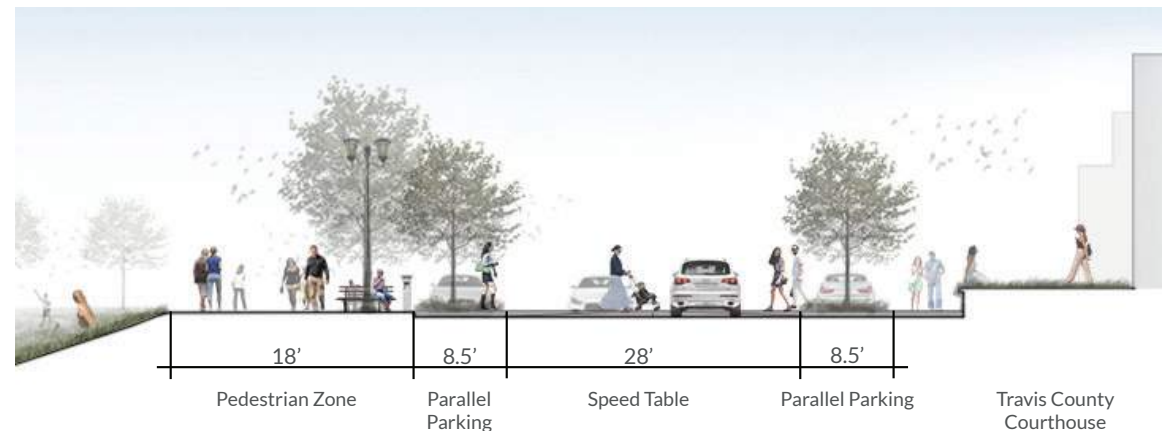
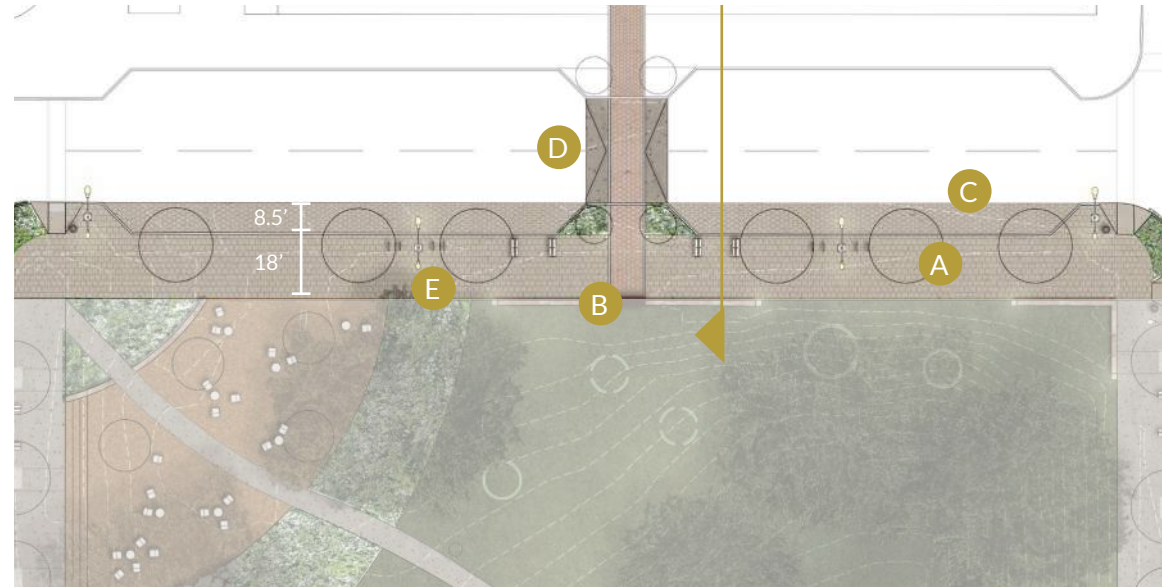


D. Speed Table

Mid block pedestrian crossing and traffic calming device

E. Upgraded Street Lighting and Furnishings

CONCEPT A



10TH STREET



Community Space

support the Square's presence in the community

CONCEPT A



A. Flat Seating Area with Gravel Terrace and Shade Trees



B. Gravel Terrace



C. Native Planting Bed

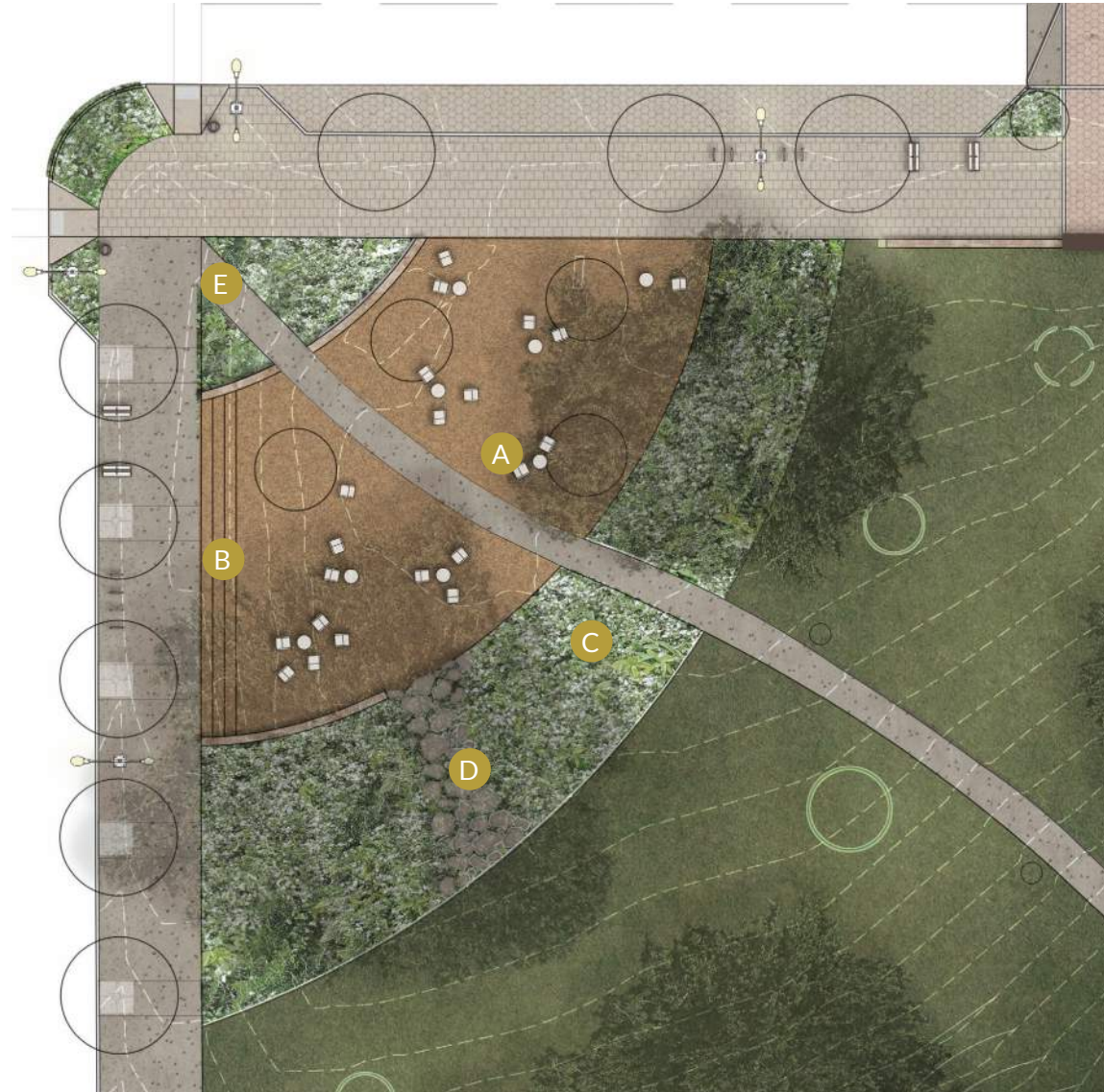


D. Stepping Stones



E. Historic Walk

Preserve the original alignment, but modify the slope of the historic walk to accommodate a level plaza

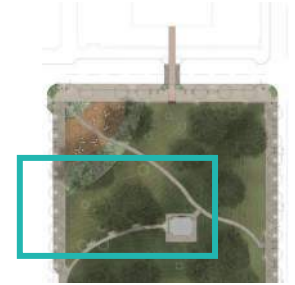




Historic Bandstand

achieve universal access

CONCEPT A



A. ADA Walk and Parking Zone



B. Resting Area

Bench, path lighting and new shade trees along proposed walk provide shaded resting area

C. Wheelchair Lift

Outdoor rated lift for access onto Bandstand

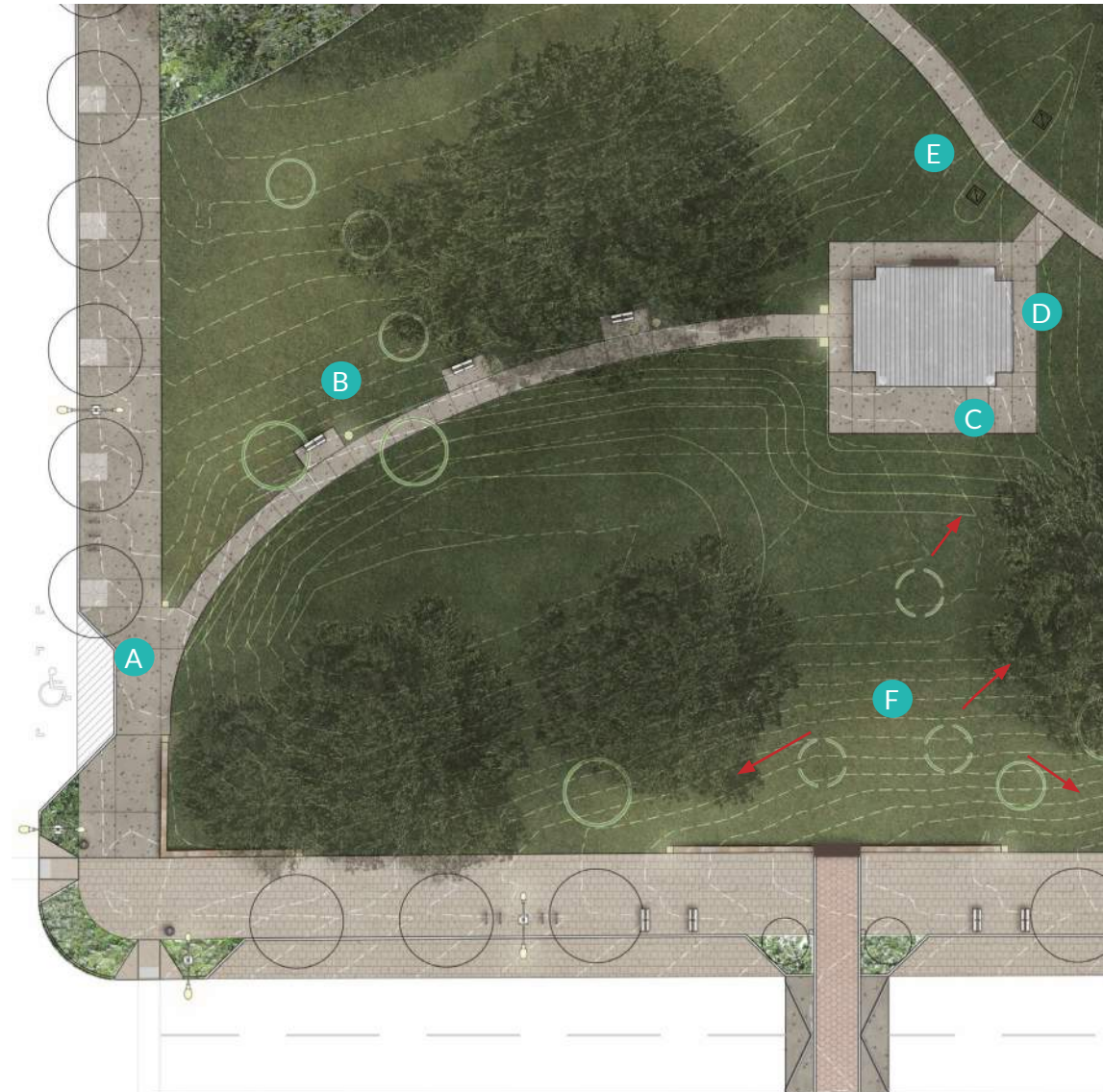
D. 5' Decorative Hardscape

Provide an accessible arrival point to the Bandstand and historic walk

E. Area Drains

F. Relocated Trees

Relocate trees to maintain viewshed to AHC



A. 18' Civic Promenade

Extended sidewalk, parallel parking and street trees

B. Sharrow Lane

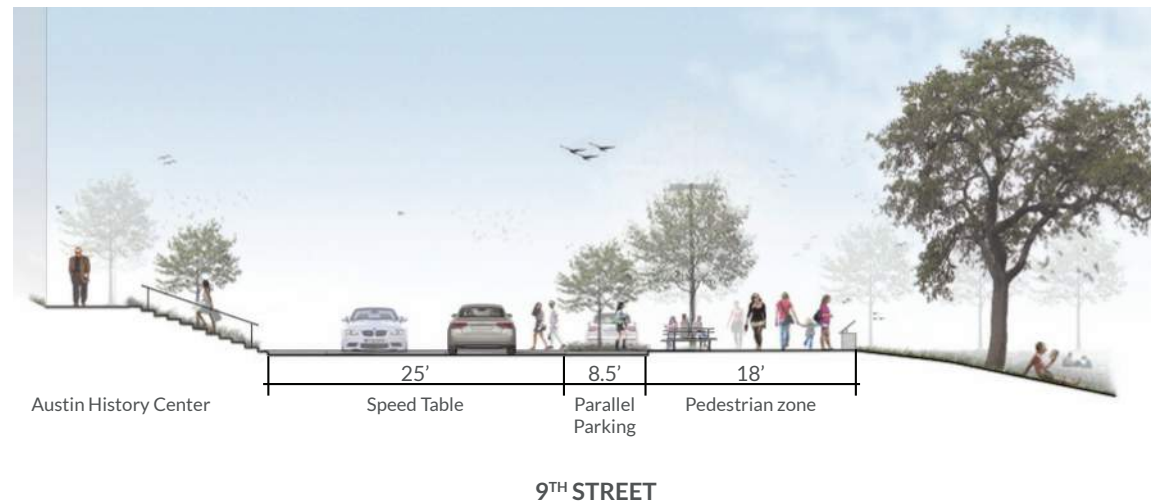
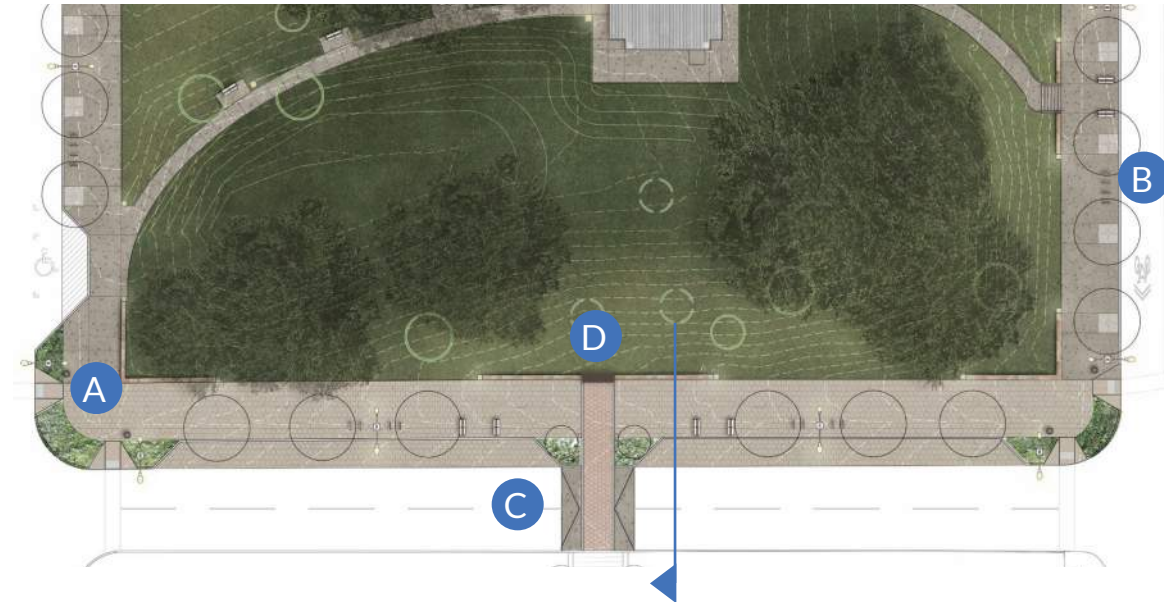


C. Speed Table



D. 18" Vertical Element for Signage and Wayfinding

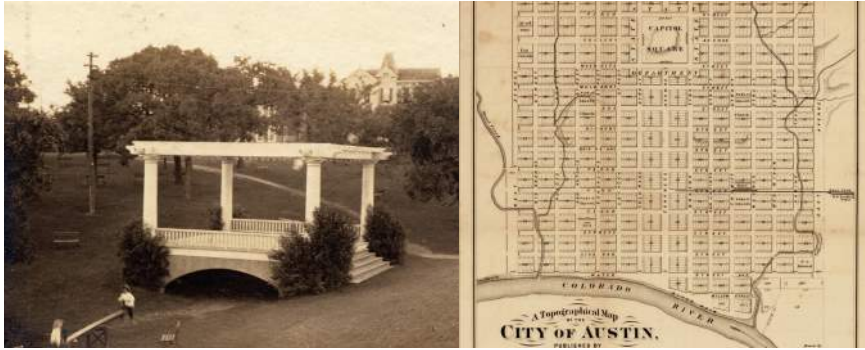
CONCEPT A



Interpretive Signage

tell the story

A. Little Shoal Creek



B. Historic Designations

C. The Bandstand



D. Mayor Wooldridge

E. The Historic Walk

CONCEPT A



Lighting

promote safety and visibility

A. Existing Path Light

B. Upgraded Street Light

C. Proposed Path Light



D. Tree Uplight



E. Illuminated Vertical Element

CONCEPT A



Concept B

10TH STREET

Reimagine 10th Street as a festival street with temporary street closures and a curbless condition

COMMUNITY SPACE

Maximize gathering space and protect existing heritage trees with wood decks

HISTORIC BANDSTAND

Celebrate the Bandstand's civic past with a native planting band and a 10' walk

9TH STREET

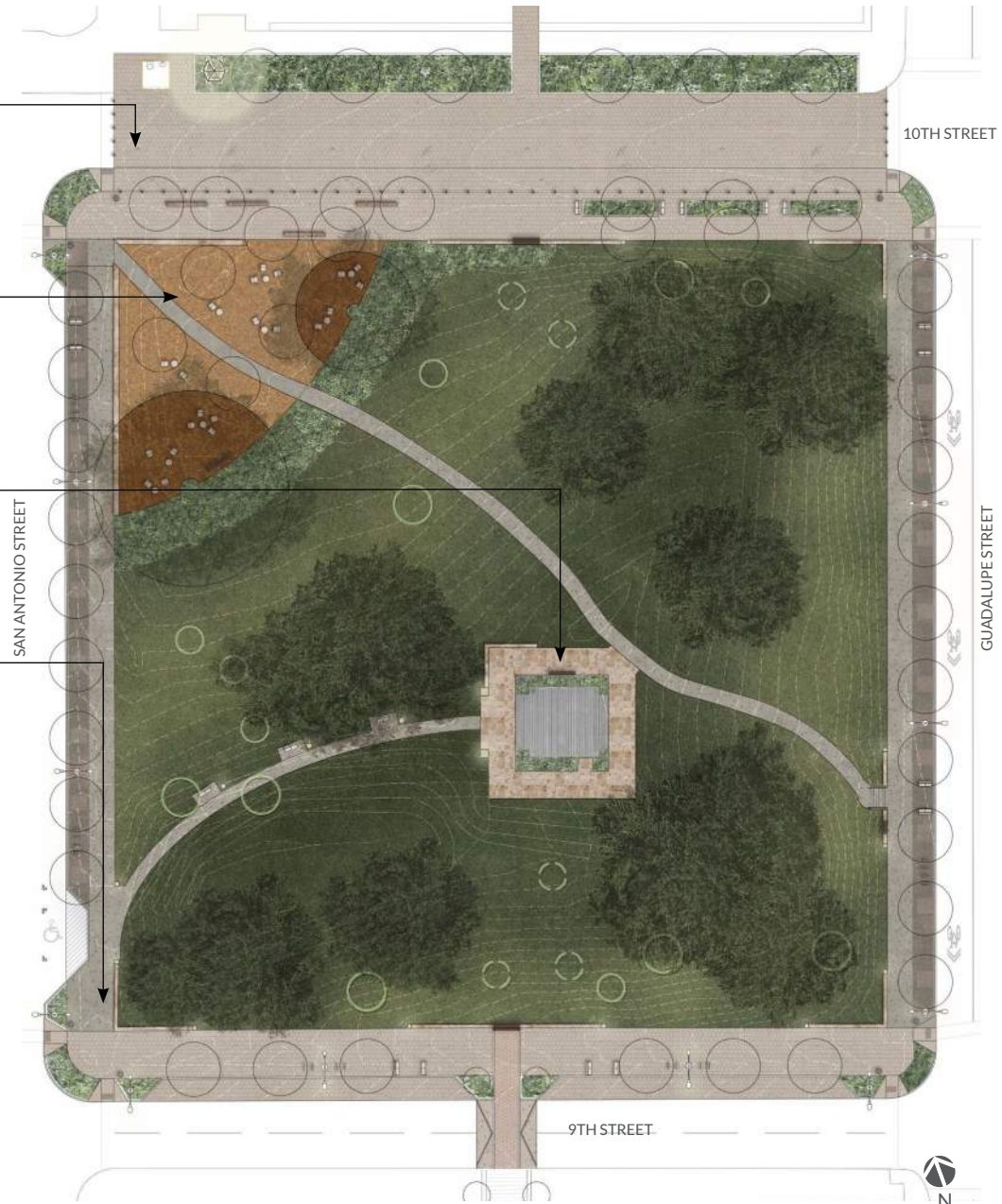
Institute sustainable principles with Silva Cells and porous paving to promote street tree health

INTERPRETIVE SIGNAGE

Tell the story of Wooldridge Square

LIGHTING

Relocate a Moon Tower to 10th Street





10th Street

support the Square's presence in the community

A. Civic Event Plaza

Parallel parking, upgraded paving and a curbless condition transform 10th into a festival street for special events on the weekend



B. Tree Grove + Seating Zone



C. Free Standing Public Restroom



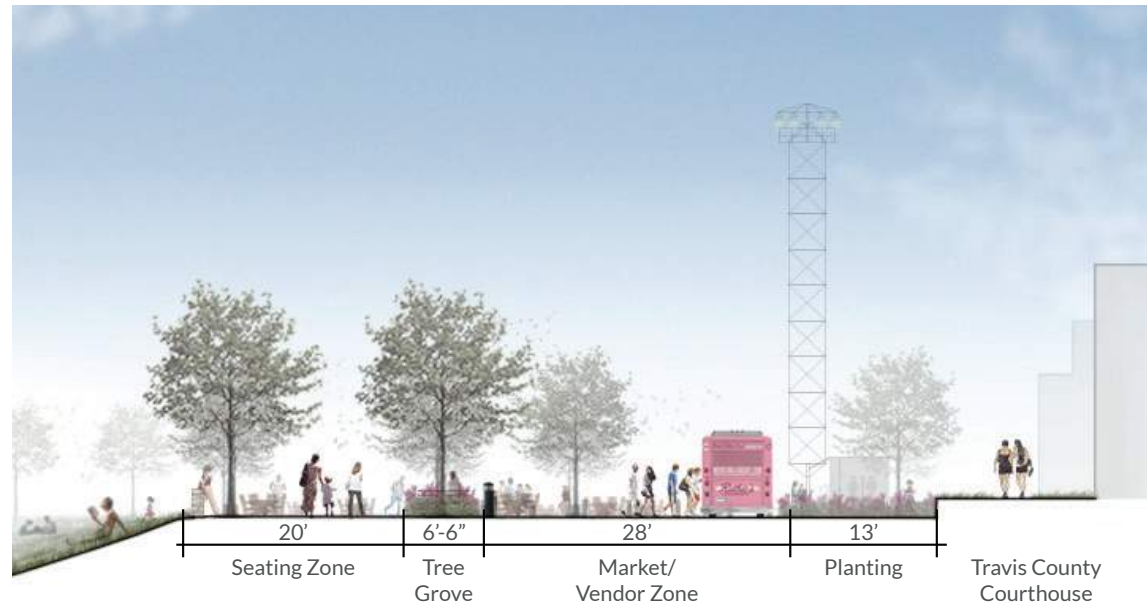
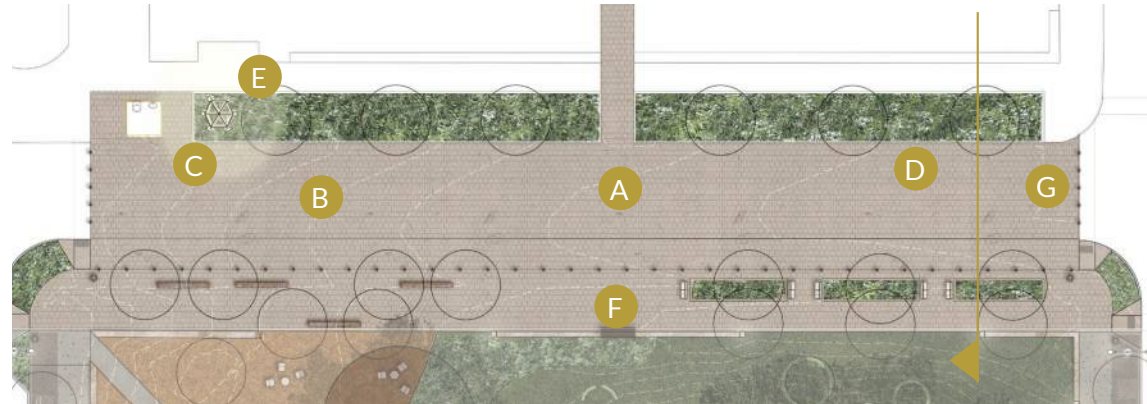
D. Market + Vendor Zone

E. Restored Moon Tower

F. 18" Vertical Element for Interpretive Signage

G. Removable Bollards

CONCEPT B



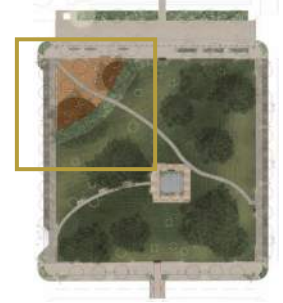
10TH STREET



Community Space

support the Square's presence in the community

CONCEPT B



A. Wood Deck + Viewing Platform



B. Low Stone Seatwall

Low stone seatwall accommodates grade change

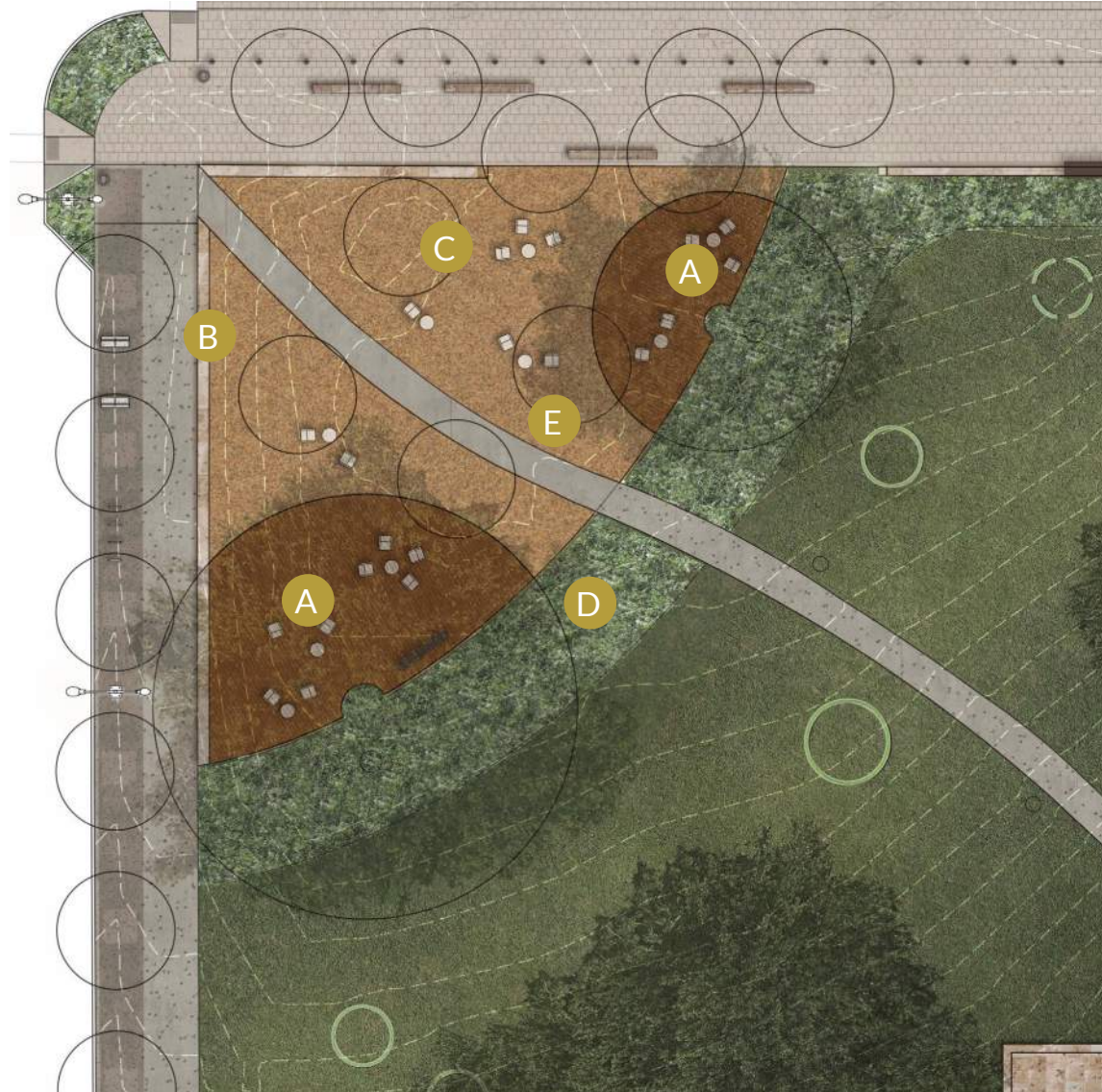
C. Gravel Plaza + Ornamental Tree Grove

D. Native Planting

Provides visual screen of community space from the Bandstand

E. Historic Walk

Slope of historic walk is modified to accommodate a level plaza while original alignment is preserved





A. Illuminated Stone Pedestal

B. Upgraded Paving

C. Planting Bed + Interpretive Signage



D. Low Seatwall

Low stone seatwall accommodates grade change

E. Resting Area

Bench, path lighting and new shade trees along proposed walk provide shaded resting area

F. ADA Walk and Parking Zone

G. Relocated Trees

Relocate trees to maintain viewshed to AHC





A. Existing Grade

The existing grade would impose upon and make impossible the proposed 10-foot walk.



B. Partially Graded with Low Seatwall

Grading beyond the new walk remains as existing, retained by a 2-foot seatwall. Some terrain within the boundaries of the walk is cut.



C. Fully Graded with No Wall

In order to resolve grade differences without the addition of a seatwall, terrain in and around the boundary of the new walk is cut.



A. 18' Great Street Sidewalks
With Silva Cells and porous paving



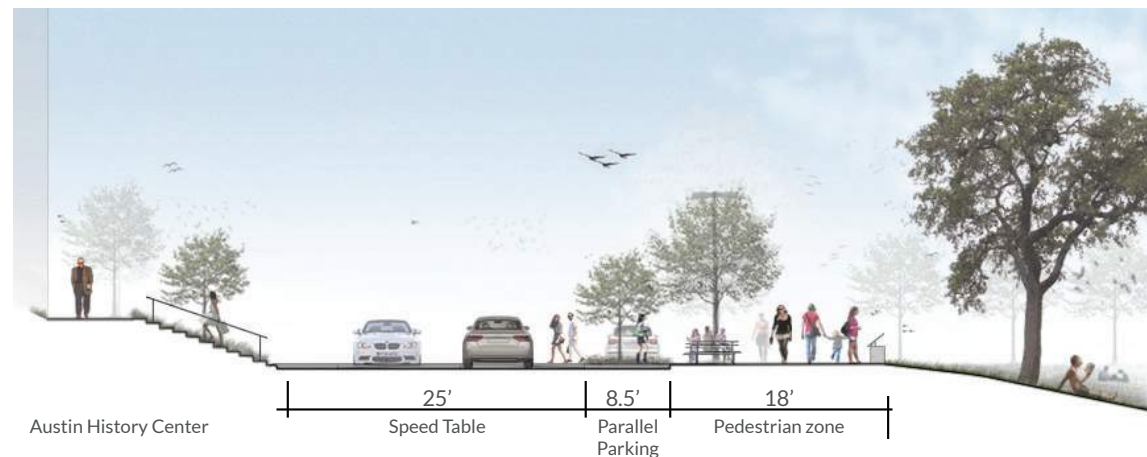
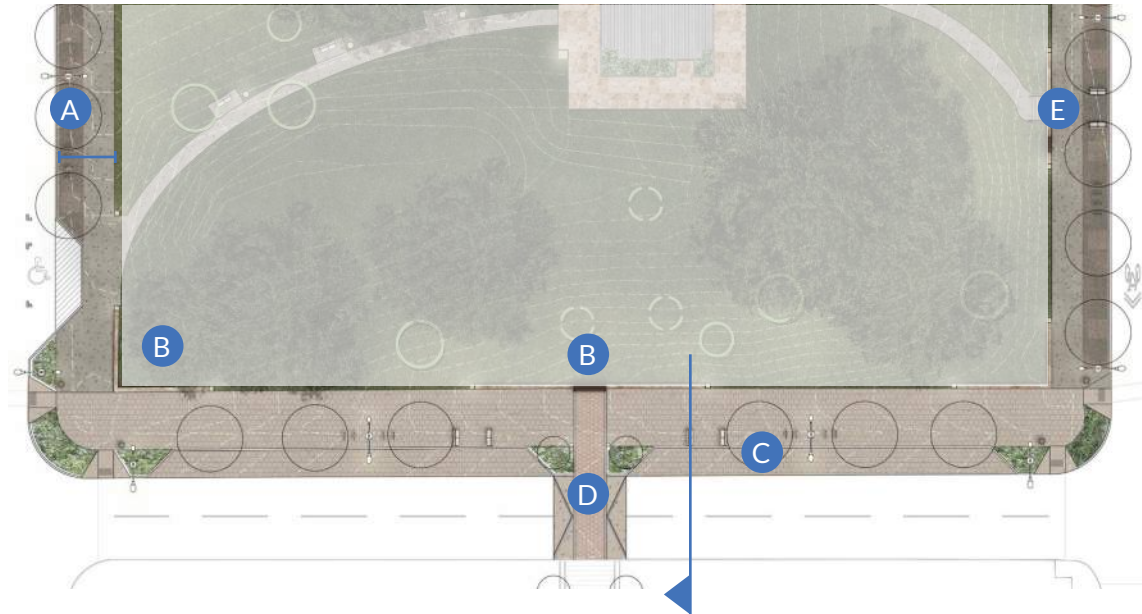
B. Interpretive Signage and Wayfinding

C. Upgraded Paving

D. Speed Table

Mid-block, aligned to stairs of the Austin History Center

E. New handrails



Interpretive Signage

tell the story

CONCEPT B



A. Little Shoal Creek

B. Historic Designations

C. The Bandstand

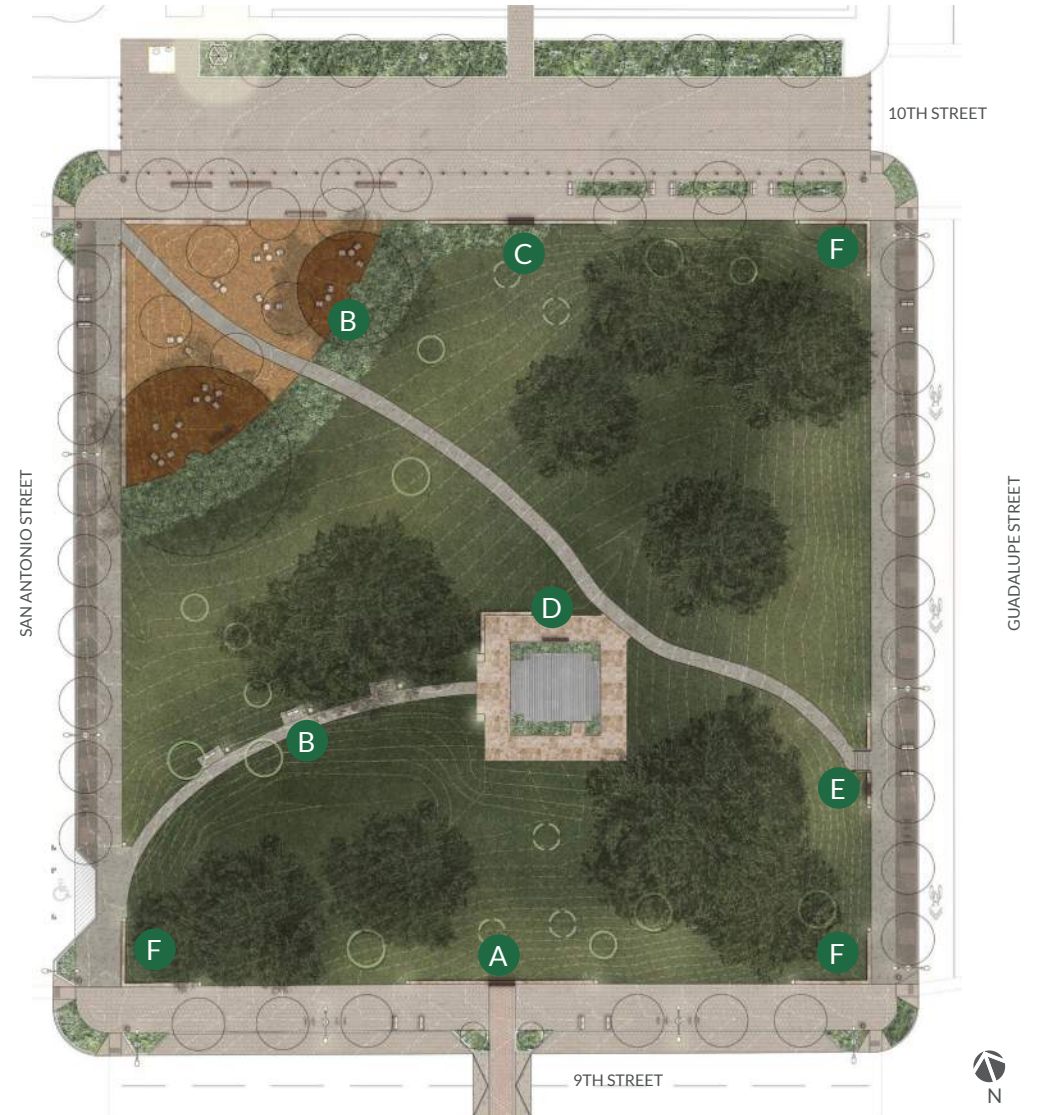
D. Mayor Wooldridge



E. The Historic Walk



F. COA Wayfinding Project



Lighting

promote safety and visibility

CONCEPT B



A. Restored Moon Tower



B. Street Light

C. Illuminated Vertical Element

D. Pedestal Light

E. Tree Uplight

F. Existing Path Light



Concept A



10TH STREET

A civic promenade with upgraded paving, parallel parking, and furnishings



COMMUNITY SPACE

A gravel plaza, terrace, shade trees, and native planting



HISTORIC BANDSTAND

A 5-foot concrete walk with illuminated pedestal lights



9TH STREET

18-foot walks with Great Streets improvements

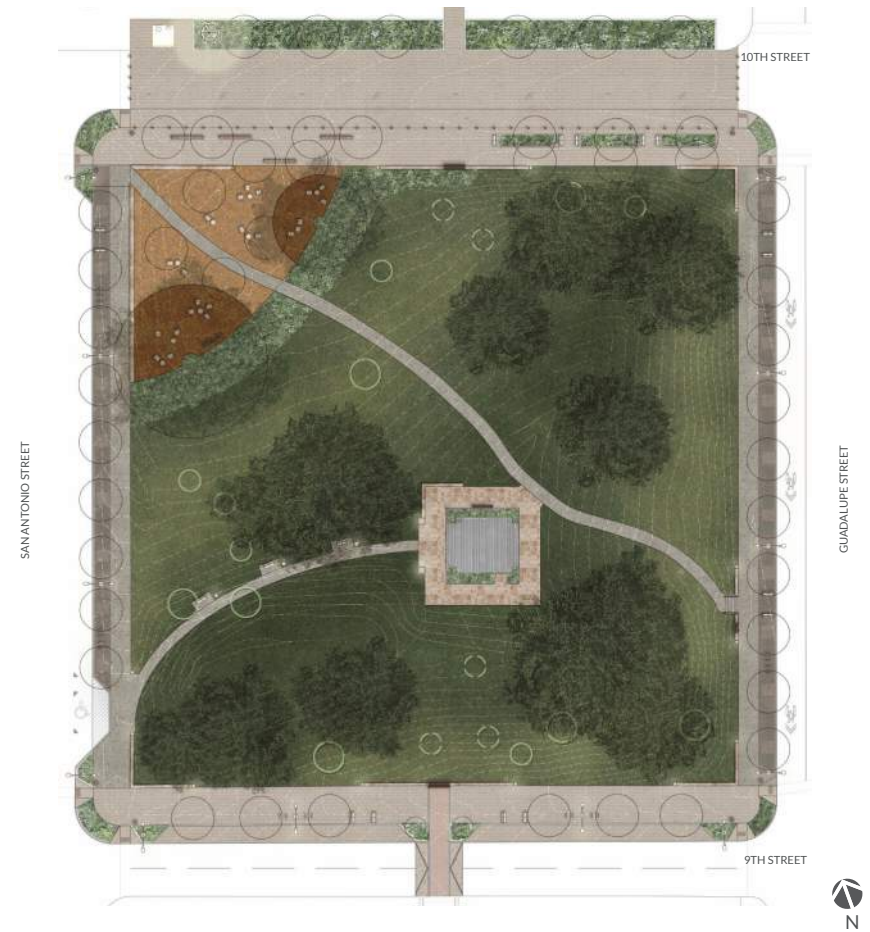


INTERPRETIVE SIGNAGE



LIGHTING

Concept B



10TH STREET

A civic event plaza with temporary street closures for special events



COMMUNITY SPACE

A gravel plaza and wood decks to protect existing critical root zones



HISTORIC BANDSTAND

A 10-foot walk with upgraded paving, planting and illuminated pedestals



9TH STREET

18-foot walks with Great Streets improvements and porous paving



INTERPRETIVE SIGNAGE



LIGHTING