

WOOLDRIDGE SQUARE PRELIMINARY PLAN

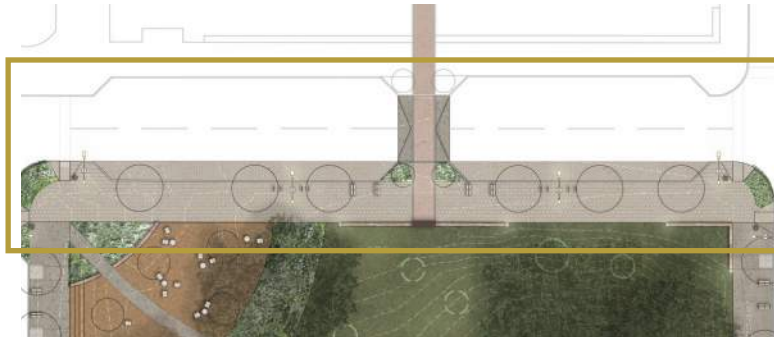
PUBLIC MEETING #2
COMMUNITY FEEDBACK FORM
AUGUST 4, 2016

WOOLDRIDGE SQUARE PRELIMINARY PLAN

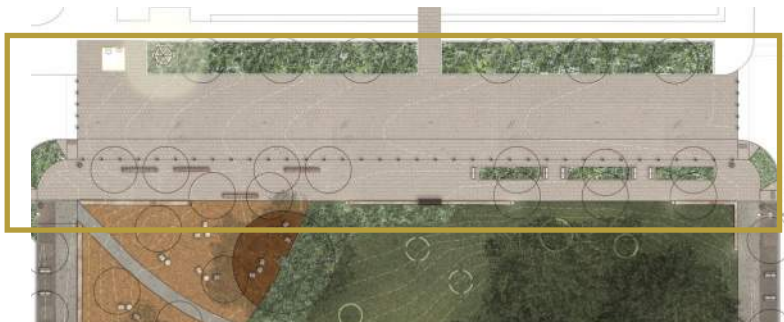
COMMUNITY FEEDBACK FORM

Concepts A and B below show two overall design concepts for Wooldridge Square. The final preliminary plan will be based on these concepts and may include elements from both A and B. Please use the space below to provide feedback on these concepts, and let us know of any preferences or concerns that are important to you.

10TH STREET



- A**
- Civic promenade with upgraded paving,
 - Parallel parking on both sides of the street
 - Street furniture + bike racks
 - Tree spacing adjusted to ensure clear view of Travis County Courthouse
 - Speed table on 10th Street
 - 18" vertical element for signage



- B**
- Civic event plaza available for temporary event closure
 - Parallel parking on south side of street
 - Street furniture + bike racks
 - Tree spacing adjusted to ensure clear view of Travis County Courthouse
 - Curbless between sidewalk and street
 - Custom benches + tree grove
 - Moon Tower relocated to new planting area (Moon Tower currently in storage)
 - Free standing public restroom
 - 18" vertical element for signage

Provide your thoughts here:



COMMUNITY SPACE



- A**
- Gravel plaza with terrace steps and seating
 - Additional shade trees
 - Native planting band on perimeter
 - Stepping stones through planting bed



- B**
- Gravel plaza with seating and tree decks to protect existing critical root zone
 - Low seatwall to accommodate grade
 - Additional shade trees
 - Native planting band on perimeter

Provide your thoughts here:

HISTORIC BANDSTAND



- A**
- 5-foot concrete walk around bandstand
 - Illuminated pedestal lights
 - Interpretive sign at bandstand
 - ADA walk to bandstand and existing walk
 - Feathered grade around bandstand walk
 - Outdoor Rated Lift

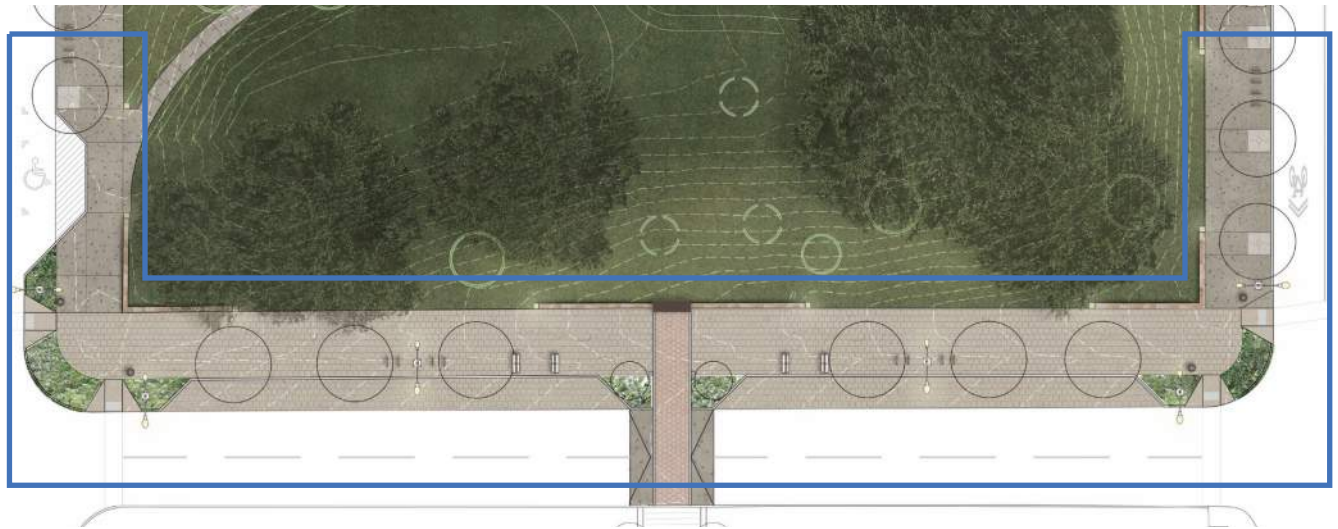


- B**
- 10-foot walk with upgraded paving
 - Illuminated pedestal lights
 - Interpretive sign at Bandstand
 - ADA walk to Bandstand and existing walk
 - Planting directly around bandstand
 - Low seatwall to accommodate grade
 - OR
 - Additional grading on northwest corner
 - Outdoor Rated Lift

Provide your thoughts here:



9TH STREET



- | | | | |
|----------|--|----------|---|
| A | <ul style="list-style-type: none">• 18-foot walks with Great Streets Improvements• Parallel parking on San Antonio St, north side of 9th St.• Tree spacing adjusted to ensure clear view of Austin History Center• Speed table on 9th street• Sharrow lane for bike & bus on Guadalupe St.• 18" vertical element for interpretive signage | B | <ul style="list-style-type: none">• 18-foot walks with Great Streets Improvements• Parallel parking on north side of 9th St., along San Antonio St.• Tree spacing adjusted to ensure clear view of History Center• Speed table on 9th street• Sharrow lane for bike & bus on Guadalupe St.• Silva Cells and porous pavement to promote tree health• 18" vertical element for interpretive signage |
|----------|--|----------|---|

Provide your thoughts here:

INTERPRETIVE SIGNAGE

Provide your thoughts here:

LIGHTING

Provide your thoughts here: