



Brownie Neighborhood Park Schematic Development and Implementation

Aerial image of the park looking South

Virtual Community Meeting #1

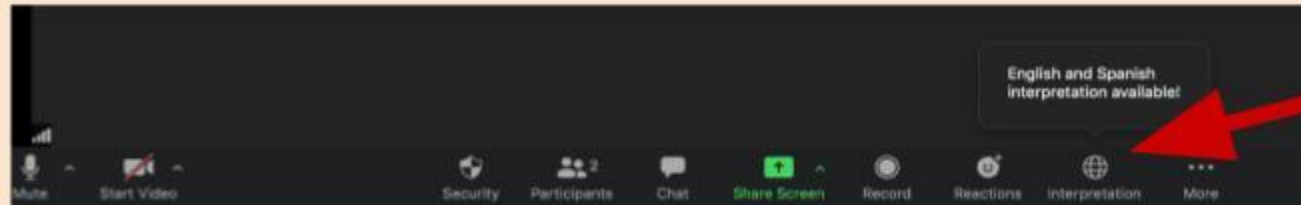
April 22, 2021

Meeting is being recorded



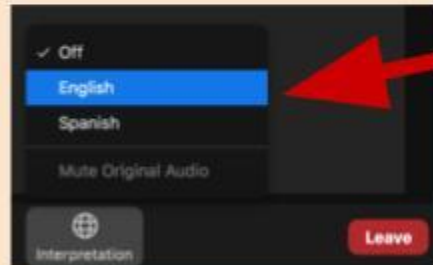
Accessing interpretation

1



Click the globe icon

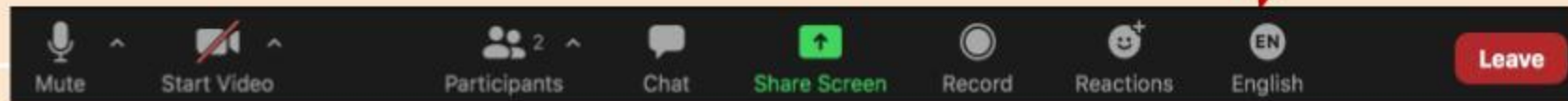
2



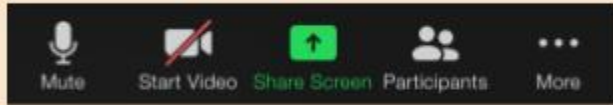
Select your preferred language

You are set!

3

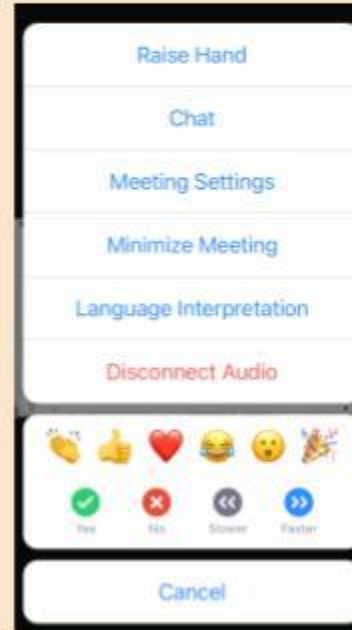


Accessing from a cell phone (or tablet)

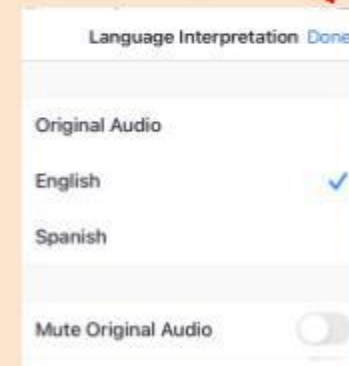


1. Click MORE to find interpretation

2. Click language interpretation

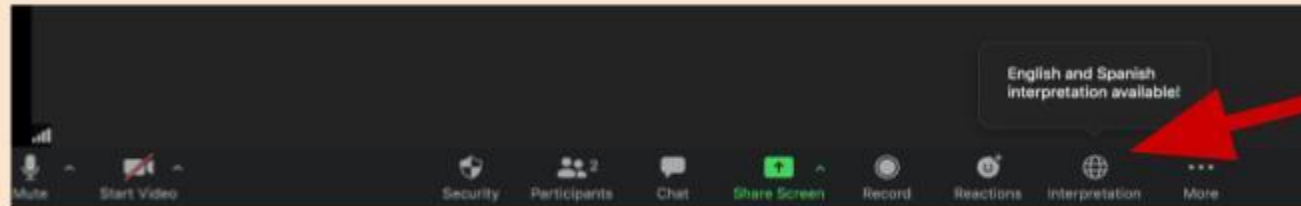


3. Click DONE and you're all set!



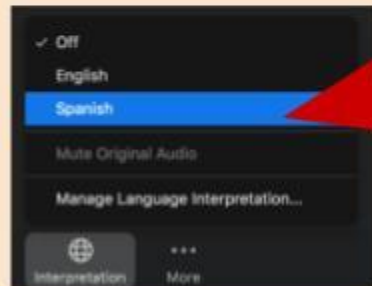
Cómo acceder a la interpretación

1



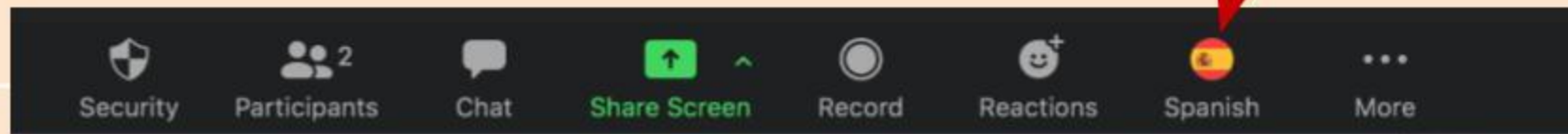
Haz click en el ícono del globo

2



Elige tu idioma de preferencia

3



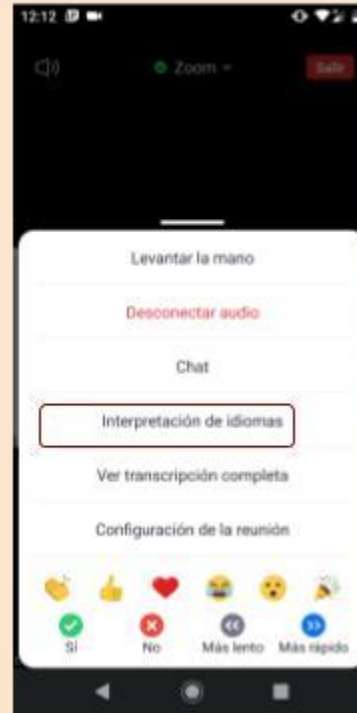
¡Listo!

¿Cómo me conecto desde mi celular o tableta?



1. Haz clic en **MÁS** para encontrar interpretación

2. Haz clic en **interpretación de idiomas**. Podrás elegir tu idioma.



3. Después de elegir español, no olvides presionar **Listo**.



Virtual Info: Zoom Housekeeping

- Participants can join by computer and/or phone
- This session is being recorded and will be posted at the conclusion.
- Participants will stay muted through the presentation.
- Questions can be shared in the comments section.
- “Raise hand” for sharing comments during questions session at end of presentation.

Agenda

- Welcome and Introduction
- Meeting Overview: Virtual Meeting Info and Agenda
- Project Team introduction
- Park Information: History of the Park, Park Classification, and Phase 2 Scope
- Project Timeline
- Overview of Existing Conditions
- Schematic Design Variation A
- Schematic Design Variation B
- Guided Questions
- Questions and Comments



View of the playground on original piece of parkland

Introductions: Meeting Team



Merritt Nolte-Roth, PARD Community Services Coordinator



Patrick Beyer, PARD Project Manager



Robert Deegan, Rialto Studio, Principal/Project Design Consultant



Keely Rizzato, Rialto Studio, Associate/Project Design Consultant

Introductions: Primary Contact

Primary Project Contact

Parks and Recreation Department

Patrick Beyer, PLA

Project Manager

Patrick.beyer@austintexas.gov



Project information provided at

<http://www.austintexas.gov/BrowniePark>

Project Consultant

Rialto Studio

Robert Deegan, PLA

Principal

RIALTO STUDIO
LANDSCAPE ARCHITECTURE



Brief History of the Park

- 2005 – Playground installed in small parcel
- 2014 – Approximately 5 acres of additional parkland were acquired for a total of 7.8 acres.
- 2017- 3 community engagement meetings held to plan the future park.
- 2018 – [Concept Plan](#) developed with SSAU Stiphany Sowell Architecture + Urbanism
- 2020 - PARD installed the new multipurpose field and irrigation system



Workshop at Gus Garcia YMCA: PARD, SSAU, and Neighborhood Residents

Park Classification: Neighborhood Park

Classification	Size (acres)	Service Area	Access	Description	Features Mix
Metropolitan	201+	Citywide		Typically located in the center of a single neighborhood or in conjunctions with an elementary school or a greenbelt. Local Recreation focus.	Compact Multi-Purpose Outdoor Athletics, Trails, Picnic Areas, Gardens, Playscapes, Nature Play, Passive Users
District	31-200	2 miles			
Neighborhood	2-30	1 mile	Collector streets (bike and pedestrian)		
Pocket	Under 2	1/4 mile			
Button	.25 or less	1/4 mile			

Brownie Park services a larger area because of parkland deficits in North Austin.
Typically, neighborhood parks do not include vehicular parking beyond ADA parking.

Anticipated Scope of Phase 2

- Addition of a loop walking trail
- Addition of solar security lighting
- Addition of new playground features
- Addition of picnic pavilion
- Addition of ADA parking spaces
- Removal of the playground
- Removal of the fence
- Art in Public Places – City of Austin Program



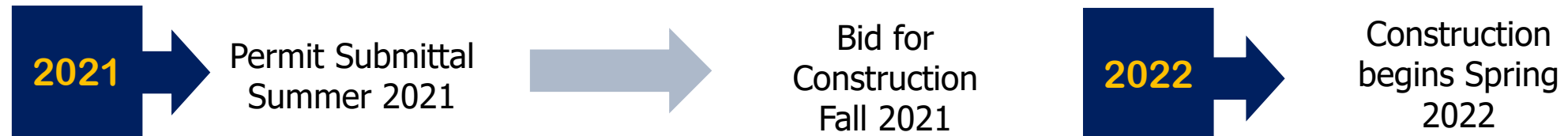
BROWNIE NEIGHBORHOOD PARK MASTERPLAN 2018

Project Timeline

Design



Permitting and Construction



Anticipated Park Opening – Spring 2023

Existing Site Conditions

LEGEND

-  Site Boundary
-  Drainage
-  Inlets
-  Heritage Tree
-  Good Quality Tree
-  Poor Quality Tree



Existing Conditions



① EXISTING PLAYGROUND



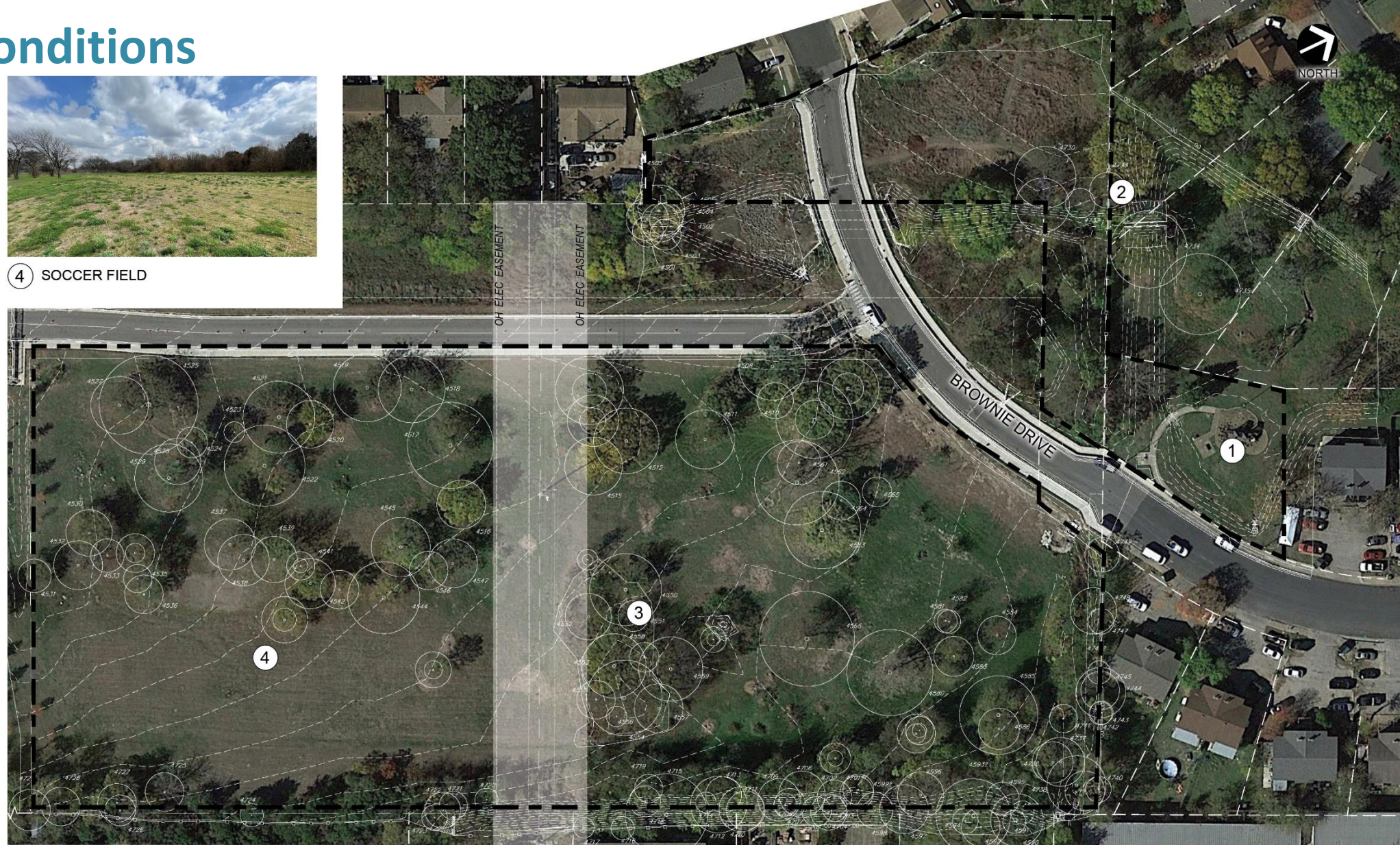
④ SOCCER FIELD



② GATE IN FENCE



③ SPOILS PILE



Key Themes

1. CREATE ONE PARK

Establish an identity for the park that celebrates the surrounding neighborhood. Utilize consistent materials to establish a coherent design language.

2. FOSTER MULTIGENERATIONAL PLAY

Support a range of recreational programs for different ages, interests and community needs. Design play spaces that are challenging, encourage curiosity, stimulate imagination and enable dynamic rather than prescriptive interaction.

3. AMPLIFY RESOURCES

Function as a central social space for the community. Include spaces for neighborhood groups, programs and activities. Preserve significant existing trees for shade and beauty.

4. ENSURE SAFETY

Provide open sightlines across the park to provide visibility. Utilize lighting to create a safe and comfortable space and illuminate the park.

5. ENHANCE ECOLOGY

Establish areas for water infiltration and enhance water quality in the tributary. Support habitat for pollinators, birds and other fauna.

2018 Concept Plan



Schematic Design Variation A

LEGEND

- ① RAIN GARDEN
- ② GRASS BERM
- ③ SPORTS COURT
- ④ PARKING (21 SPACES)
- ⑤ PICNIC AREA
- ⑥ ENTRY SIGN/ART WALL
- ⑦ COMMUNITY ORCHARD
- ⑧ WATER SPIGOT
- ⑨ EXISTING WATER FOUNTAIN
- ⑩ VEGETATED FILTER STRIP
- ⑪ MAIN LAWN/GATHERING SPACE
- ⑫ PAVILION
- ⑬ BAMBOO JUNGLE
- ⑭ FITNESS AREA
- ⑮ 5-12 YEAR PLAY AREA
- ⑯ SWING AREA
- ⑰ 2-5 YEAR PLAY AREA
- ⑱ NATURE PLAY
- ⑲ MEADOW/UNMOWED AREA
- ⑳ SOCCER FIELD 150'x240'
- ㉑ EXISTING TREES, TYP.
- ㉒ PROPOSED TREES, TYP.
- ㉓ SALVAGED BOULDERS
- ㉔ BBQ GRILLS
- ㉕ WATER FOUNTAIN
- ㉖ WALKING PATH



Schematic Design Variation B

LEGEND

- ① RAIN GARDEN
- ② OPEN LAWN
- ③ SPORTS COURT
- ④ PARKING (21 SPACES)
- ⑤ PICNIC AREA
- ⑥ ENTRY SIGN/ART WALL
- ⑦ COMMUNITY ORCHARD
- ⑧ WATER SPIGOT
- ⑨ EXISTING WATER FOUNTAIN
- ⑩ VEGETATED FILTER STRIP
- ⑪ MAIN LAWN/GATHERING SPACE
- ⑫ PAVILION
- ⑬ BAMBOO JUNGLE
- ⑭ EXERCISE EQUIPMENT
- ⑮ 5-12 YEAR PLAY AREA
- ⑯ SWING AREA
- ⑰ 2-5 YEAR PLAY AREA
- ⑱ NATURE PLAY
- ⑲ MEADOW/UNMOWED AREA
- ⑳ SOCCER FIELD 150'x240'
- ㉑ EXISTING TREES, TYP.
- ㉒ PROPOSED TREES, TYP.
- ㉓ SALVAGED BOULDERS
- ㉔ BBQ GRILLS
- ㉕ WATER FOUNTAIN
- ㉖ WALKING PATH



Variation A Walking Trail



① LOOP TRAIL | 1,888 Linear Feet | 0.36 Mile



② RAIN GARDEN



③ PARKING | 21 SPACES

④ LIGHTING



Variation B Walking Trail



① LOOP TRAIL | 2,064 Linear Feet | 0.4 Mile

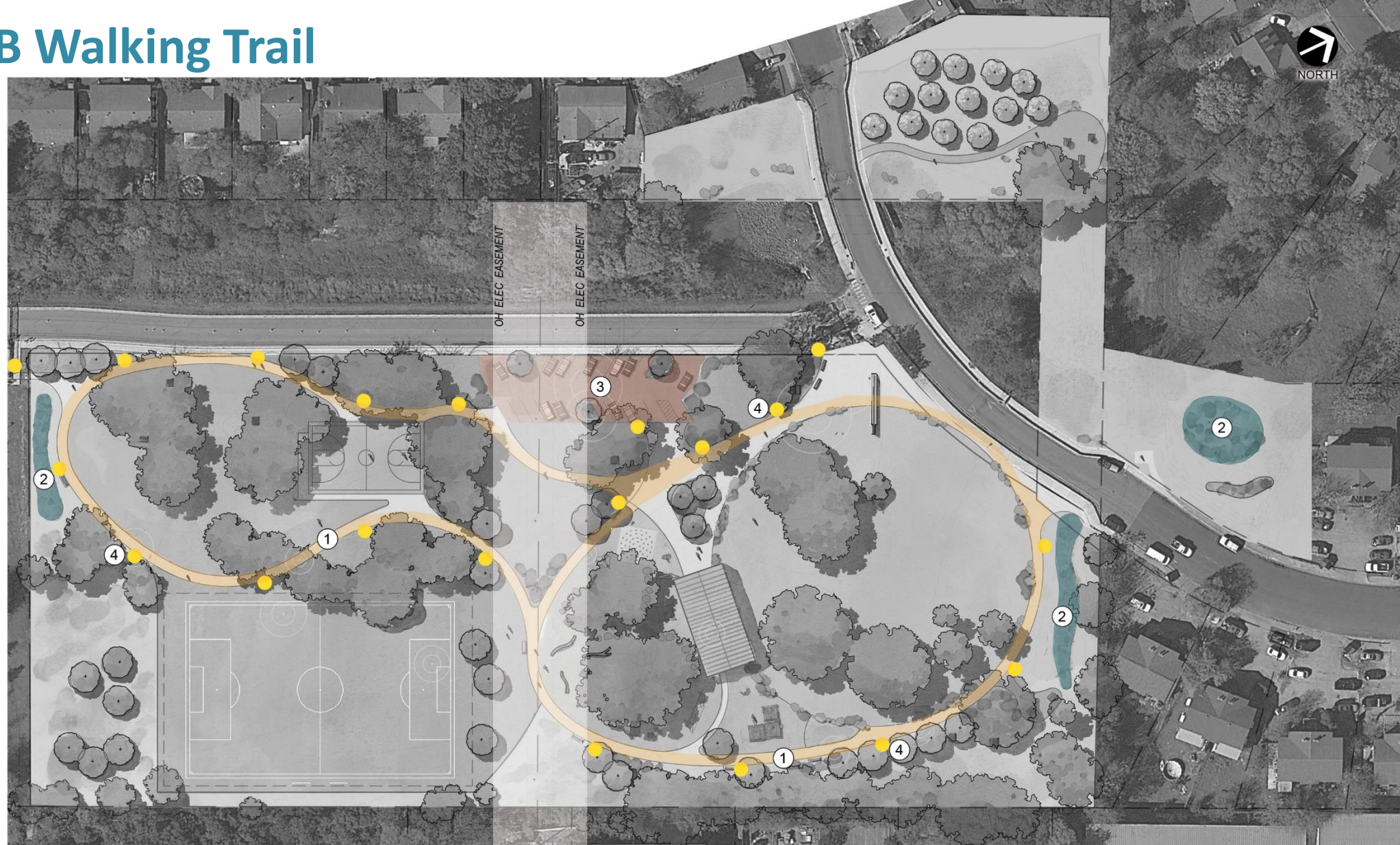


② RAIN GARDEN



③ PARKING | 21 SPACES

④ LIGHTING



Variation A Site Furnishings



① PICNIC AREA



⑤ BICYCLE PARKING

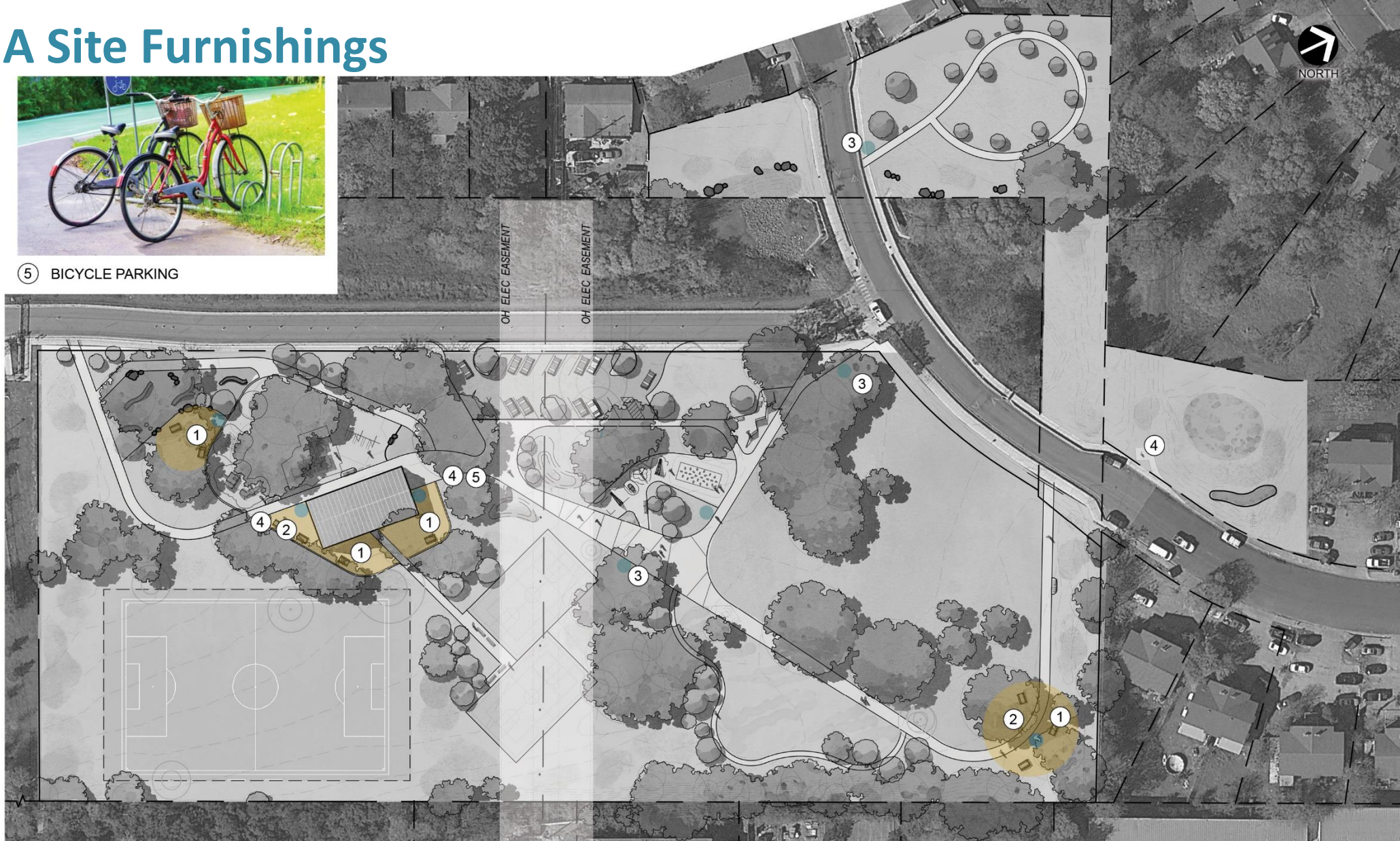


② CHARCOAL BBQ



③ LITTER RECEPTACLES

④ DRINKING FOUNTAIN



Variation B Site Furnishings



① PICNIC AREA



⑤ BICYCLE PARKING

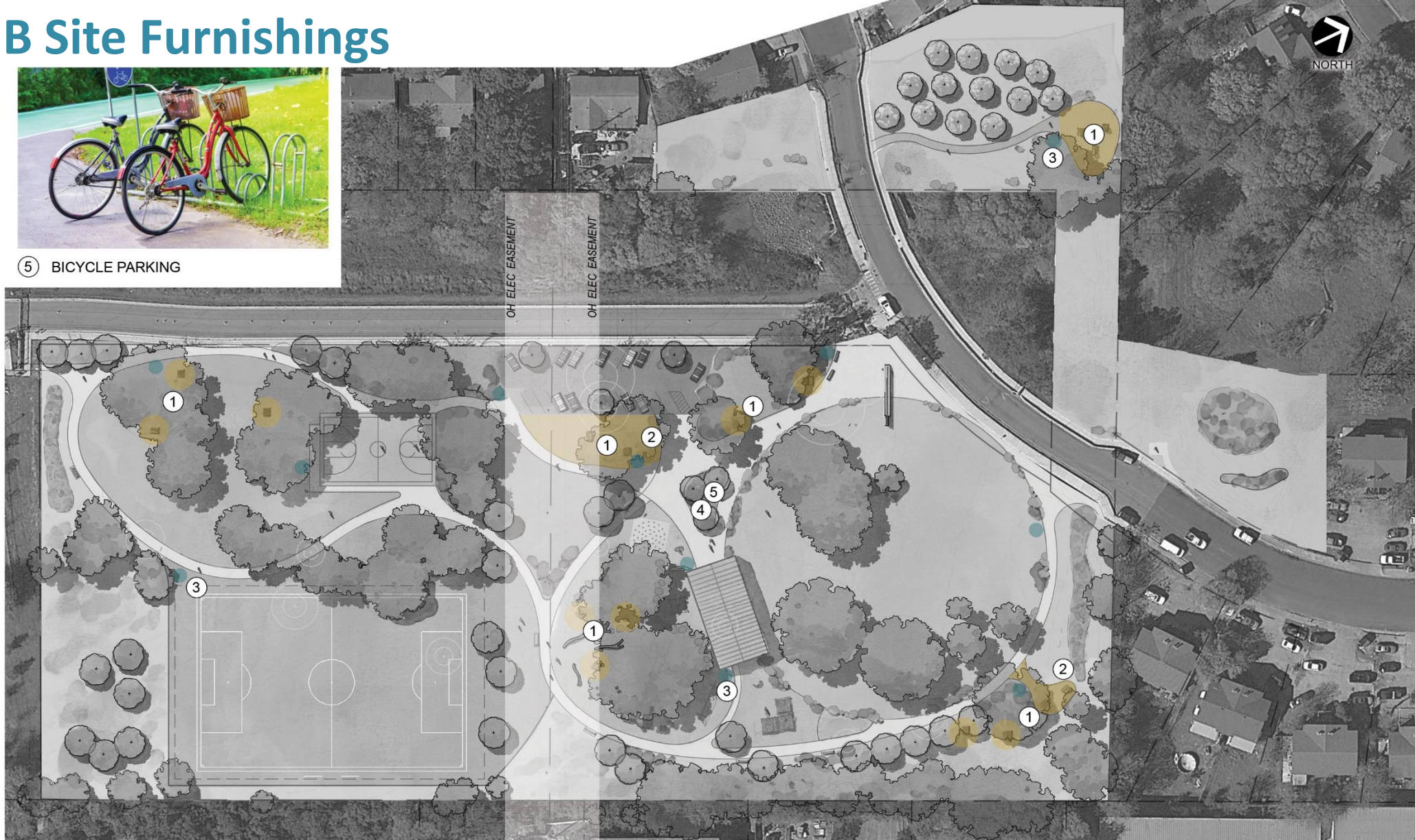


② CHARCOAL BBQ



③ LITTER RECEPTACLES

④ DRINKING FOUNTAIN



Variation A Open Lawn + Soccer Field



① OPEN LAWN



④ BOULDER SEATING



⑤ ORCHARD



② POLLINATOR MEADOW



③ SOCCER FIELD



Variation B Open Lawn + Soccer Field



① OPEN LAWN



④ BOULDER SEATING



⑤ ORCHARD



② POLLINATOR MEADOW



③ SOCCER FIELD



Variation A Community Gathering



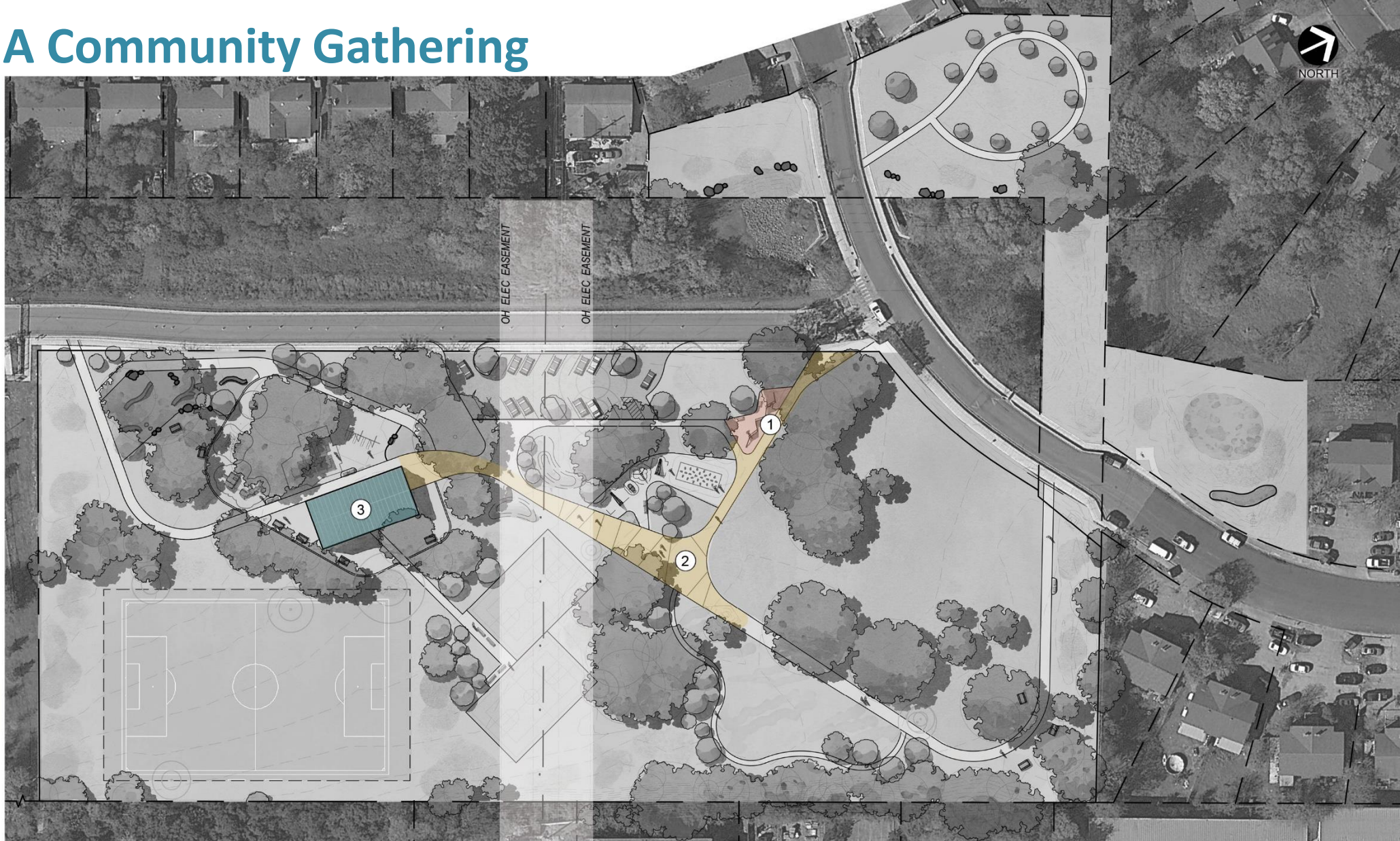
① ART WALL



② PLAZA SPACE



③ PAVILION



Variation A Art Wall



Variation B Community Gathering



① ART WALL



② PLAZA SPACE



③ PAVILION



Variation B Art Wall



Variation A Active Recreation



① SPORT COURT



④ DYNAMIC FITNESS



② PLATFORM PLAYSCAPE



③ NATURE PLAY



Variation B Active Recreation



① SPORT COURT



④ DYNAMIC FITNESS



② PLATFORM PLAYSCAPE



③ NATURE PLAY



Play Types



① PLATFORM PLAY



② SWINGS



③ ADVENTURE PLAY



④ NET CLIMBERS



⑤ NATURE PLAY-UNSTRUCTURED



⑥ NATURE PLAY STRUCTURED



⑦ ADVANCED CLIMBING



⑧ DYNAMIC FITNESS

Pause to set up Poll Everywhere

PollEv.com/austinparks512, or
Text AUSTINPARKS512 to 22333

When Questions are activated, respond at **PollEv.com/austinparks512**, or
Text **AUSTINPARKS512** to **22333** once to join



1. Art in Public Paces Program - Goals

What words would you like an artist to be inspired by in creating public art for the park? Your words will be used to create goals for the project.

When Questions are activated, respond at PollEv.com/austinparks512, or
Text **AUSTINPARKS512** to **22333** once to join



2. What do you like to do when you are at the park?

Select all that apply:

- **Playground**
- **Sports field (recently opened)**
- **Picnicking**
- **Walking/jogging**
- **Passive uses (sitting, lounging, relaxing)**
- **Community Orchard**
- **I currently do not use the park**

When Questions are activated, respond at [PollEv.com/austinparks512](https://poll-ev.com/austinparks512), or
Text **AUSTINPARKS512** to **22333** once to join



3. What is your preferred playground style? Select three:



① PLATFORM PLAY



② SWINGS



③ ADVENTURE PLAY



④ NET CLIMBERS



⑤ NATURE PLAY-UNSTRUCTURED



⑥ NATURE PLAY STRUCTURED



⑦ ADVANCED CLIMBING



⑧ DYNAMIC FITNESS

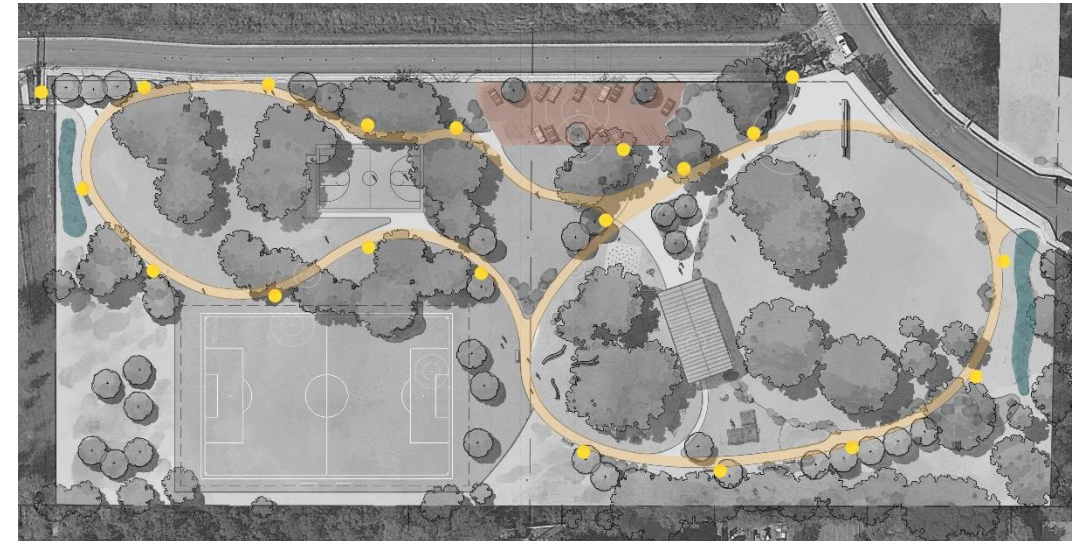
When Questions are activated, respond at [PollEv.com/austinparks512](https://www.poll-ev.com/austinparks512), or Text **AUSTINPARKS512** to **22333** once to join

4. Park Circulation

Which park circulation route would encourage more active use of the trail by the community?



Variation A – A linear trail that links activity areas from the IDEA school to Brownie Drive with smaller loops at either end.



Variation B – A curvilinear loop trail that links activity areas in between the IDEA school to Brownie Drive.

5. Flexible Lawn Space

Which flexible lawn space would be the most versatile for the needs of the community?



Variation A – A large open area near the North end of the main parcel and nearby picnic areas.



Variation B – A large formal lawn area on the North end and smaller lawn area on the South end with picnic areas throughout.

6. Community Gathering Space

Which location of the community gathering area would encourage the most use of the included amenities?



Variation A – Amenities are grouped together toward the South end of the park near the IDEA school.



Variation B – Amenities are grouped together toward the North end of the park closer to Brownie Drive.

7. Activity Area

Which activity layout would best activate the park?



Variation A – Locate the playground equipment closer to the IDEA school with the sports court and older age group activities centrally located.



Variation B – Locate the playground equipment centrally with the sport court closer to the IDEA school.

8. Additional Scope

The proposed scope of Phase 2 of the concept plan implementation anticipates the installation of a loop trail, playground, pavilion and parking. Additional features and amenities shown in the concept plan will be implemented in consideration of Phase 2 budget limitations. **If additional funding is available, what amenities or features should be prioritized for the community? (select 2):**

- Entry/Visibility enhancement
- Event Plaza
- Picnic Areas
- Tree and landscape enhancements
- Fitness Equipment
- Sports Court

Next Steps

Share with others

- provide additional feedback and view a recording of tonight's meeting by visiting the Parks and Recreation Departments project webpage:
- <http://www.austintexas.gov/browniepark>

PARD site visit

- PARD staff on-site 3pm on Wednesday, April 28th to promote the online survey

More information

- Survey: <https://publicinput.com/R6627> (open now through May 13, 2021)

Community Meeting #2: Late June 2021

An aerial photograph of a park area. The foreground and middle ground are filled with lush green trees and grass. A paved road with a red curb runs diagonally through the upper right portion of the image. In the background, some buildings and more trees are visible under a clear sky.

Questions & Comments



Project Contact
Patrick Beyer, PLA
Patrick.beyer@austintexas.gov

Schematic Design Variation A

LEGEND

- ① RAIN GARDEN
- ② GRASS BERM
- ③ SPORTS COURT
- ④ PARKING (21 SPACES)
- ⑤ PICNIC AREA
- ⑥ ENTRY SIGN/ART WALL
- ⑦ COMMUNITY ORCHARD
- ⑧ WATER SPIGOT
- ⑨ EXISTING WATER FOUNTAIN
- ⑩ VEGETATED FILTER STRIP
- ⑪ MAIN LAWN/GATHERING SPACE
- ⑫ PAVILION
- ⑬ BAMBOO JUNGLE
- ⑭ FITNESS AREA
- ⑮ 5-12 YEAR PLAY AREA
- ⑯ SWING AREA
- ⑰ 2-5 YEAR PLAY AREA
- ⑱ NATURE PLAY
- ⑲ MEADOW/UNMOWED AREA
- ⑳ SOCCER FIELD 150'x240'
- ㉑ EXISTING TREES, TYP.
- ㉒ PROPOSED TREES, TYP.
- ㉓ SALVAGED BOULDERS
- ㉔ BBQ GRILLS
- ㉕ WATER FOUNTAIN
- ㉖ WALKING PATH



Schematic Design Variation B

LEGEND

- ① RAIN GARDEN
- ② OPEN LAWN
- ③ SPORTS COURT
- ④ PARKING (21 SPACES)
- ⑤ PICNIC AREA
- ⑥ ENTRY SIGN/ART WALL
- ⑦ COMMUNITY ORCHARD
- ⑧ WATER SPIGOT
- ⑨ EXISTING WATER FOUNTAIN
- ⑩ VEGETATED FILTER STRIP
- ⑪ MAIN LAWN/GATHERING SPACE
- ⑫ PAVILION
- ⑬ BAMBOO JUNGLE
- ⑭ EXERCISE EQUIPMENT
- ⑮ 5-12 YEAR PLAY AREA
- ⑯ SWING AREA
- ⑰ 2-5 YEAR PLAY AREA
- ⑱ NATURE PLAY
- ⑲ MEADOW/UNMOWED AREA
- ⑳ SOCCER FIELD 150'x240'
- ㉑ EXISTING TREES, TYP.
- ㉒ PROPOSED TREES, TYP.
- ㉓ SALVAGED BOULDERS
- ㉔ BBQ GRILLS
- ㉕ WATER FOUNTAIN
- ㉖ WALKING PATH

