



Highland Neighborhood Park Schematic Development and Phase 2 Implementation

Aerial image of the park looking South

Virtual Community Meeting #1

March 31, 2021

Meeting is being recorded



Virtual Info: Zoom Housekeeping

- Participants can join by computer and/or phone
- This session is being recorded and will be posted at the conclusion.
- Participants will stay muted through the presentation.
- Questions can be shared in the comments section.
- “Raise hand” for sharing comments during questions session at end of presentation.

Agenda

- Welcome and Introduction
- Meeting Overview: Virtual Meeting Info and Agenda
- Project Team introduction
- Park Information: History of the Park, Park Classification, and Phase 2 Scope
- Project Timeline
- Overview of adopted concept plan
- Schematic Design Variation A
- Schematic Design Variation B
- Guided Questions
- Questions and Comments



View from the West side of the park looking East

Introductions: Meeting Team



Merritt Nolte-Roth, PARD Community Services Coordinator



Patrick Beyer, PARD Project Manager



Robert Deegan, Rialto Studio, Principal/Project Design Consultant



Keely Rizzato, Rialto Studio, Associate/Project Design Consultant

Introductions: Primary Contact

Primary Project Contact

Parks and Recreation Department

Patrick Beyer, PLA

Project Manager

Patrick.beyer@austintexas.gov



Project information provided at

<http://www.austintexas.gov/HighlandParkProject>

Project Consultant

Rialto Studio

Robert Deegan, PLA

Principal

RIALTO STUDIO
LANDSCAPE ARCHITECTURE



History of the Park

- July 1, 2014 - 7.46 acres transferred from Watershed Protection to the Parks and Recreation Department
- 2015 - Council provided funding for a Concept Plan
- 2016 [Concept Plan](#) developed with Norris Design - 3 community engagement meetings held
- 2019 - PARD installed the new playground, first phase of concept plan implementation
- 2020 - Watershed Protection storm water improvements complete, now in Warranty
- 2020 - PARD initiates Project for second phase of concept plan implementation



Adopted Concept Plan, Norris Design

Park Classification: Neighborhood Park

Classification	Size (acres)	Service Area	Access	Description	Features Mix
Metropolitan	201+	Citywide		Typically located in the center of a single neighborhood or in conjunctions with an elementary school or a greenbelt. Local Recreation focus.	Compact Multi-Purpose Outdoor Athletics, Trails, Picnic Areas, Gardens, Playscapes, Nature Play, Passive Users
District	31-200	2 miles			
Neighborhood	2-30	1 mile	Collector streets (bike and pedestrian)		
Pocket	Under 2	1/4 mile			
Button	.25 or less	1/4 mile			

Highland Park, one of a kind

- Neighborhood Parks do not typically include restrooms, unless they're existing or called for in a concept plan
- Neighborhood parks do not typically include parking lots, unless property connects to high-use trails.
- League sports are typically not encouraged at Neighborhood Parks

Anticipated Scope of Phase 2

- Improved sports fields with fencing in the northwest corner of the park
- Removal of the existing kickball field in the south east corner of the park.
- Removal of the two story building, plus the modest improvements to the single story building
- Field lighting for the improved kickball fields
- Loop walking trail and pedestrian circulation route
- Improved parking area
- Utility improvements including a designated area for future pavilion and restroom.
- New drinking fountain (Austin Parks Foundation Funding)



Adopted [Concept Plan](#), Norris Design

Project Timeline

Design



Permitting and Construction



Anticipated Park Opening – Spring 2023

Concept Plan Opportunities and Restraints



Key Themes from the Concept Plan

1. Safety and visibility
2. Accommodate two complimentary users
3. Relocate fields and center shared spaces
4. Playground and loop trail were neighborhood priorities
5. Kickball and parking were UHO priorities

2016 Concept Plan

LEGEND

- | | | |
|-------------------------------|---|------------------------|
| ① Entry Monument/Marker | ⑭ Swing Area | ⑳ Temporary Fencing |
| ② Parking (58 spaces) | ⑮ Open Lawn | ㉑ Dugout |
| ③ Drop-off | ⑯ Creek Restoration
(Meander and restore creek channel) | ㉒ Bleachers |
| ④ Planting Buffer | ⑰ No-Mow Slope
(Herbaceous restoration on park side slope) | ㉓ Existing Trees, Typ. |
| ⑤ Main Lawn/ Gathering Area | ⑱ Herbaceous & Woody Restoration
(Restoration between creek and property line) | ㉔ Proposed Trees, Typ. |
| ⑥ Central Spine | ㉚ Footbridge | ㉕ Fitness Stations |
| ⑦ Food Truck/Booth Pads | ㉛ Multi-Use Court | ㉖ Low water crossing |
| ⑧ Large Pavilion | ㉜ Pond Overlook | ㉗ Trail-head |
| ⑨ Picnic Area | ㉝ Bio-filtration Pond | ㉘ Rain Garden |
| ⑩ 2-5 Year Toddler Playground | ㉞ Storage Facility
(Refurbished existing Building) | ㉙ Bioswale |
| ⑪ Sand Play Area | ㉟ Maintenance Access | ㉚ 6' Privacy Fence |
| ⑫ 5-12 Year Playground | ㊱ Open Lawn/Multi-Use Fields | |
| ⑬ Nature Play Area | ㊲ Permanent Fencing | |



Improvements to Date



① WATERSHED IMPROVEMENTS



② PLAYGROUND IMPROVEMENTS



Schematic Design Variation A

LEGEND

- | | |
|----------------------------------|-----------------------------------|
| ① ENTRY MONUMENT/MARKER | ②① MULTI-USE COURT |
| ② PARKING (56SPACES) | ②① POND OVERLOOK |
| ③ DROP-OFF | ②② BIO-FILTRATION POND (EXISTING) |
| ④ PLANTING BUFFER | ②③ STORAGE FACILITY |
| ⑤ MAIN LAWN/GATHERING AREA | ②④ MAINTENANCE ACCESS |
| ⑥ CENTRAL SPINE | ②⑤ OPEN LAWN/MULTI-USE FIELDS |
| ⑦ FOOD TRUCK/BOOTH PADS | ②⑥ PERMANENT FENCING |
| ⑧ LARGE PAVILION | ②⑦ TEMPORARY FENCING |
| ⑨ PICNIC AREA | ②⑧ DUGOUT |
| ⑩ 2-5 YEAR PLAY AREA (EXISTING) | ②⑨ BLEACHERS |
| ⑪ SAND PLAY AREA (EXISTING) | ③① EXISTING TREES, TYP. |
| ⑫ 5-12 YEAR PLAY AREA (EXISTING) | ③① PROPOSED TREES, TYP. |
| ⑬ NATURE PLAY AREA | ③② FITNESS STATIONS |
| ⑭ SWING AREA | ③③ LOW WATER CROSSING |
| ⑮ OPEN LAWN | ③④ TRAIL-HEAD |
| ⑯ CREEK RESTORATION | ③⑤ RAIN GARDEN |
| ⑰ NO-MOW SLOPE | ③⑥ BIOSWALE |
| ⑱ HERBACEOUS & WOODY RESTORATION | ③⑦ 6' PRIVACY FENCE |
| ⑲ FOOTBRIDGE | |



Schematic Design Variation B

LEGEND

- | | |
|----------------------------------|-----------------------------------|
| ① ENTRY MONUMENT/MARKER | ②① MULTI-USE COURT |
| ② PARKING (26 SPACES) | ②① POND OVERLOOK |
| ③ DROP-OFF | ②② BIO-FILTRATION POND (EXISTING) |
| ④ PLANTING BUFFER | ②③ STORAGE FACILITY |
| ⑤ MAIN LAWN/GATHERING AREA | ②④ MAINTENANCE ACCESS |
| ⑥ OVERFLOW PARKING (43 SPACES) | ②⑤ OPEN LAWN/MULTI-USE FIELDS |
| ⑦ FOOD TRUCK PARKING | ②⑥ PERMANENT FENCING |
| ⑧ LARGE PAVILION | ②⑦ TEMPORARY FENCING |
| ⑨ PICNIC AREA | ②⑧ DUGOUT |
| ⑩ 2-5 YEAR PLAY AREA (EXISTING) | ②⑨ BLEACHERS |
| ⑪ SAND PLAY AREA (EXISTING) | ③① EXISTING TREES, TYP. |
| ⑫ 5-12 YEAR PLAY AREA (EXISTING) | ③② PROPOSED TREES, TYP. |
| ⑬ NATURE PLAY AREA | ③③ FITNESS STATIONS |
| ⑭ SWING AREA | ③④ LOW WATER CROSSING |
| ⑮ OPEN LAWN / FLEX FIELD | ③⑤ TRAIL-HEAD |
| ⑯ CREEK RESTORATION | ③⑥ RAIN GARDEN |
| ⑰ NO-MOW SLOPE | ③⑦ BIOSWALE |
| ⑱ HERBACEOUS & WOODY RESTORATION | ③⑧ 6" PRIVACY FENCE |
| ⑲ FOOTBRIDGE | |



Variation A Parking/Loop Trail



① LOOP TRAIL | 2,951 Linear Feet



② PARKING LOT - BIORETENTION | 0.6 acres
56 parking spaces



Variation B Parking/Loop Trail



① LOOP TRAIL | 2,653 Linear Feet



② PARKING LOT - BIORETENTION | 0.4 acres
26 parking spaces

③ OVERFLOW PARKING | 0.38 acres
43 parking spaces



Variation A Open Lawn/Fields



① SPORTS FIELD | 1.5 acres



② OPEN LAWN | 0.6 acres

③ OPEN LAWN | 0.4 acres



Variation B Open Lawn/Fields



① SPORTS FIELD | 1.5 acres



② OPEN LAWN | 0.9 acres

③ OPEN LAWN | 0.4 acres



Variation A Community Hub



① SWINGS | 0.05 acres



② NATURE PLAY | 0.09 acres



③ SPORT COURT | 0.09 acres



④ SHADE PAVILION | 0.06 acres



⑤ FITNESS | 0.01 acres

⑥ PICNIC AREA | 0.12 acres

⑦ EXISTING PLAYGROUND | 0.1 acres



Variation B Community Hub



① SWINGS | 0.05 acres



④ SHADE PAVILION | 0.06 acres



② NATURE PLAY | 0.13 acres



⑤ FITNESS | 0.05 acres



③ SPORT COURT | 0.09 acres

⑥ PICNIC AREA | 0.12 acres

⑦ EXISTING PLAYGROUND | 0.1 acres



Broader Concept



Pause to answer community questions from the chat

Pause to set up Poll Everywhere

PollEv.com/austinparks512, or
Text AUSTINPARKS512 to 22333

When Questions are activated, respond at **PollEv.com/austinparks512**, or
Text **AUSTINPARKS512** to **22333** once to join



1. What do you like to do when you are at the park?

Select all that apply:

- A. Playground
- B. Open playfield (soccer, kickball, etc)
- C. Picnicking
- D. Walking
- E. Passive uses (sitting, lounging, relaxing)

When Questions are activated, respond at [PollEv.com/austinparks512](https://www.poll-ev.com/austinparks512), or
Text **AUSTINPARKS512** to **22333** once to join

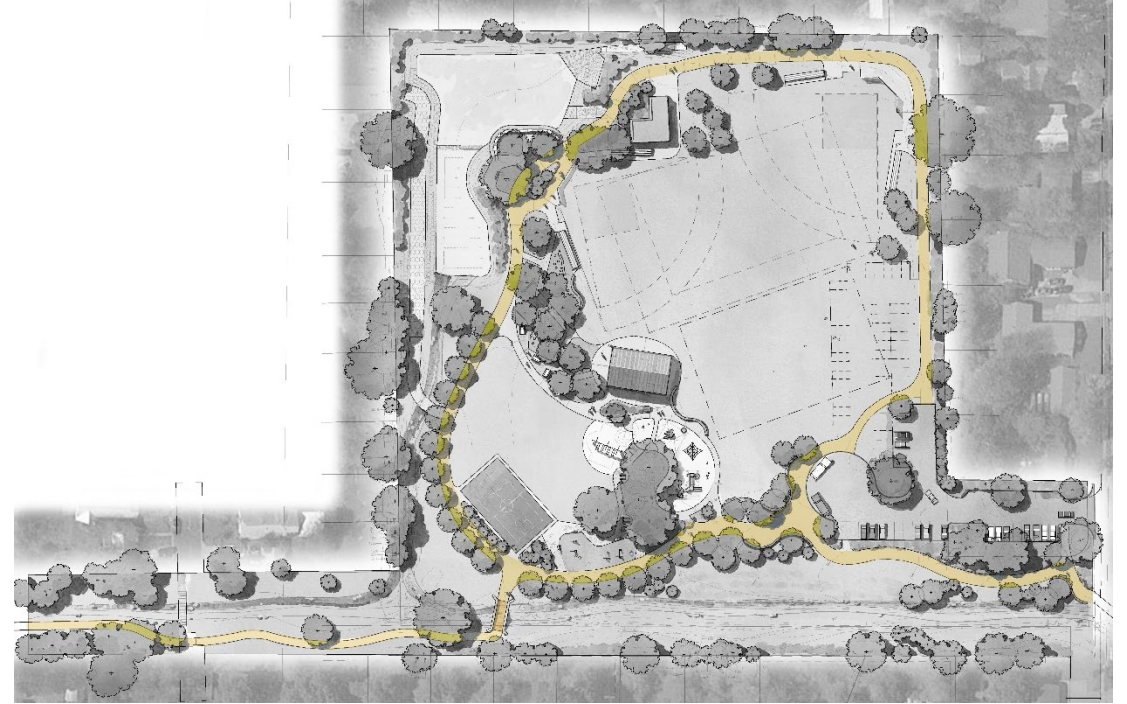


2. Loop trail question

Which loop trail would encourage more active neighborhood use of the trail?



Variation A - Shorter loop around the sports field and meanders around the playground, open lawn area and sport court.



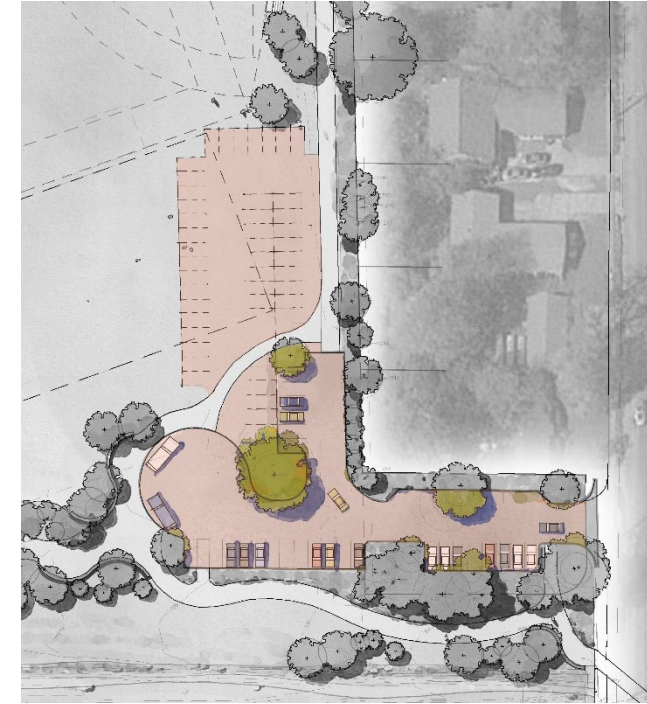
Variation B – Larger loop around the outer edges of the park, encircling the sports fields, playground, open lawn area and sport court.

3. Parking lot question

Which parking lot would best balance the need for parking and the need for active park space?



Variation A – Traditional parking lot layout (56 asphalt spaces).



Variation B – Parking layout that accommodates peak demand with optional overflow parking (26 asphalt spaces and 43 grass spaces).

4. Open lawn/ sports field question

Which open lawn and sports field layout would be the most versatile for the needs of the neighborhood?



Variation A – Includes the sports field and two smaller open lawn areas on either side of the community hub. Total grass area is 2.5 acres.



Variation B – Includes a large combined sports field and open lawn area on the North and East sides of the park, and a smaller open lawn area on the south side of the community hub. Total grass area is 2.8 acres.

5. Community Hub Layout

Which community hub layout would encourage the most usage of the included amenities? The community hub amenities may include a swing area, a nature play area, sports court, shade pavilion, fitness area, picnic area, and the existing playground.



Variation A – includes the community hub in a concentrated area in the center of the park, with fitness areas dispersed along the trail loop.



Variation B – includes the community hub amenities spread out along the central portion of the park and trail loop, encircling the smaller open lawn area. Variation B features a slightly larger nature play area and fitness area.

6. Additional Scope

The proposed scope of Phase 2 of the concept plan implementation anticipates the installation of a loop trail, improved sports fields, and parking. If additional funding became available, what small improvements or amenities would you like to see? (select 2):

- A. Entry/Visibility enhancement
- B. Swings
- C. Picnic Areas
- D. Tree and landscape enhancements
- E. Fitness Equipment
- F. Low-water crossing

Next Steps

Share with others

- Can provide additional feedback and view a recording of tonight's meeting by visiting the Parks and Recreation Departments project webpage:
- <http://www.austintexas.gov/HighlandParkProject>

More information

- Survey: <https://publicinput.com/HighlandParkProject>
(open now through April 21, 2021)

Community Meeting #2: Late Spring 2021

An aerial photograph of a park. In the center-left, there is a circular playground with a green slide and a small structure. To the right of the playground is a large, open grassy area, likely a sports field. In the background, there are more trees and a building. The text "Questions & Comments" is overlaid in white on the right side of the image.

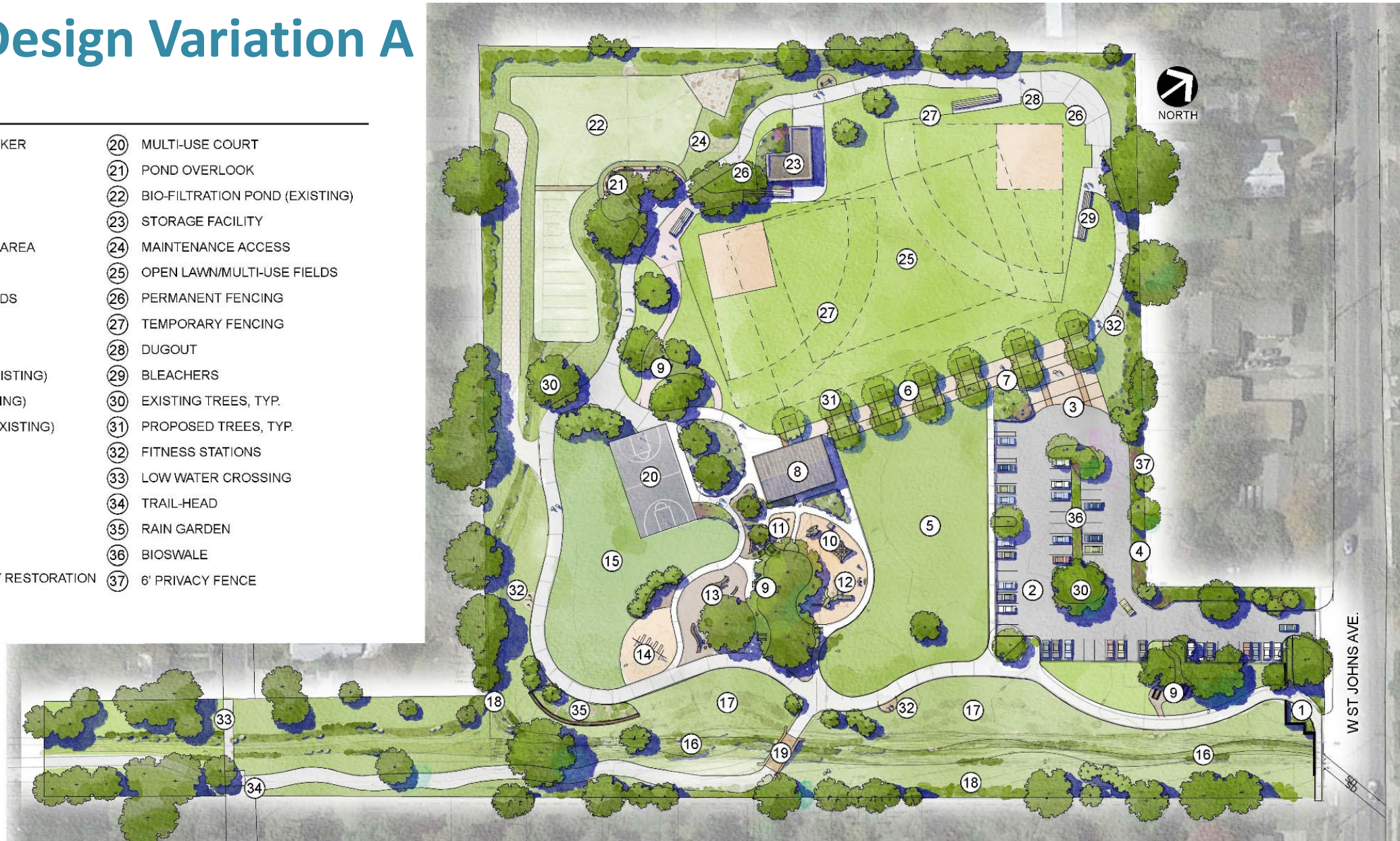
Questions & Comments

Project Contact:
Patrick Beyer, PLA
Patrick.beyer@austintexas.gov

Schematic Design Variation A

LEGEND

- | | |
|----------------------------------|-----------------------------------|
| ① ENTRY MONUMENT/MARKER | ②⑩ MULTI-USE COURT |
| ② PARKING (56SPACES) | ②① POND OVERLOOK |
| ③ DROP-OFF | ②② BIO-FILTRATION POND (EXISTING) |
| ④ PLANTING BUFFER | ②③ STORAGE FACILITY |
| ⑤ MAIN LAWN/GATHERING AREA | ②④ MAINTENANCE ACCESS |
| ⑥ CENTRAL SPINE | ②⑤ OPEN LAWN/MULTI-USE FIELDS |
| ⑦ FOOD TRUCK/BOOTH PADS | ②⑥ PERMANENT FENCING |
| ⑧ LARGE PAVILION | ②⑦ TEMPORARY FENCING |
| ⑨ PICNIC AREA | ②⑧ DUGOUT |
| ⑩ 2-5 YEAR PLAY AREA (EXISTING) | ②⑨ BLEACHERS |
| ⑪ SAND PLAY AREA (EXISTING) | ③⑩ EXISTING TREES, TYP. |
| ⑫ 5-12 YEAR PLAY AREA (EXISTING) | ③① PROPOSED TREES, TYP. |
| ⑬ NATURE PLAY AREA | ③② FITNESS STATIONS |
| ⑭ SWING AREA | ③③ LOW WATER CROSSING |
| ⑮ OPEN LAWN | ③④ TRAIL-HEAD |
| ⑯ CREEK RESTORATION | ③⑤ RAIN GARDEN |
| ⑰ NO-MOW SLOPE | ③⑥ BIOSWALE |
| ⑱ HERBACEOUS & WOODY RESTORATION | ③⑦ 6' PRIVACY FENCE |
| ⑲ FOOTBRIDGE | |



Schematic Design Variation B

LEGEND

- | | |
|----------------------------------|-----------------------------------|
| ① ENTRY MONUMENT/MARKER | ②⑩ MULTI-USE COURT |
| ② PARKING (26 SPACES) | ②① POND OVERLOOK |
| ③ DROP-OFF | ②② BIO-FILTRATION POND (EXISTING) |
| ④ PLANTING BUFFER | ②③ STORAGE FACILITY |
| ⑤ MAIN LAWN/GATHERING AREA | ②④ MAINTENANCE ACCESS |
| ⑥ OVERFLOW PARKING (43 SPACES) | ②⑤ OPEN LAWN/MULTI-USE FIELDS |
| ⑦ FOOD TRUCK PARKING | ②⑥ PERMANENT FENCING |
| ⑧ LARGE PAVILION | ②⑦ TEMPORARY FENCING |
| ⑨ PICNIC AREA | ②⑧ DUGOUT |
| ⑩ 2-5 YEAR PLAY AREA (EXISTING) | ②⑨ BLEACHERS |
| ⑪ SAND PLAY AREA (EXISTING) | ③① EXISTING TREES, TYP. |
| ⑫ 5-12 YEAR PLAY AREA (EXISTING) | ③② PROPOSED TREES, TYP. |
| ⑬ NATURE PLAY AREA | ③③ FITNESS STATIONS |
| ⑭ SWING AREA | ③④ LOW WATER CROSSING |
| ⑮ OPEN LAWN / FLEX FIELD | ③⑤ TRAIL-HEAD |
| ⑯ CREEK RESTORATION | ③⑥ RAIN GARDEN |
| ⑰ NO-MOW SLOPE | ③⑦ BIOSWALE |
| ⑱ HERBACEOUS & WOODY RESTORATION | ③⑧ 6' PRIVACY FENCE |
| ⑲ FOOTBRIDGE | |

