

Appendix A: Case Study and Project Prioritization Presentation



PARD Recreation and Senior Centers Assessment and Gap Analysis

**Equity focused framework for the
2024 bond cycle development**

Date: March 8, 2023

Presented By: Alyssa Tharrett, RA | PARD Architectural Development Division | Project Manager

Recording

Please be advised that this meeting is being recorded.
If anyone has objections, please voice them now.



Anticipated Road Map



Equity

Austin's history of segregationist policies, modern day gentrification, and racial inequity have created and perpetuated institutional disparities in communities of color. Addressing these disparities requires commitment to developing systems that promote a community where every Austinite can thrive.

We are committed to developing and implementing policies and practices that address systemic inequities throughout the City in terms of economics, working conditions, local area outcomes, and participation in city affairs. We are committed to creating and sustaining government that goes beyond reflecting the diversity of the community, and is inclusive and equitable in service outcomes and quality of life.

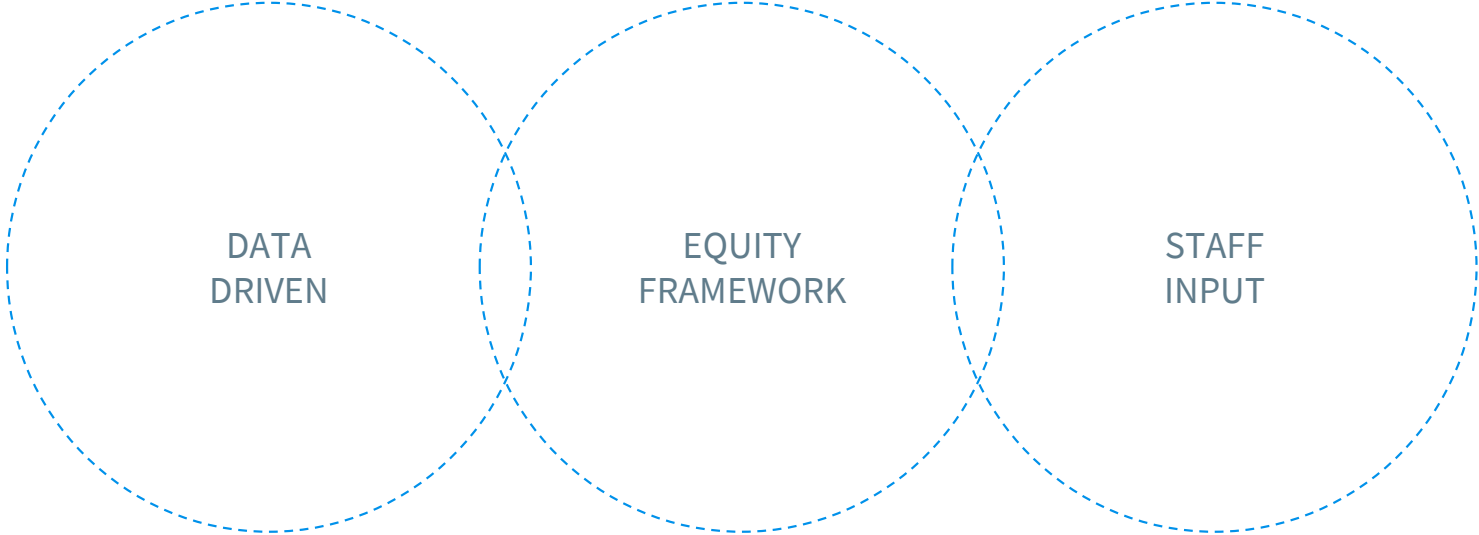


Racial Equity Vision Statement

How is the City and PARD addressing Equity

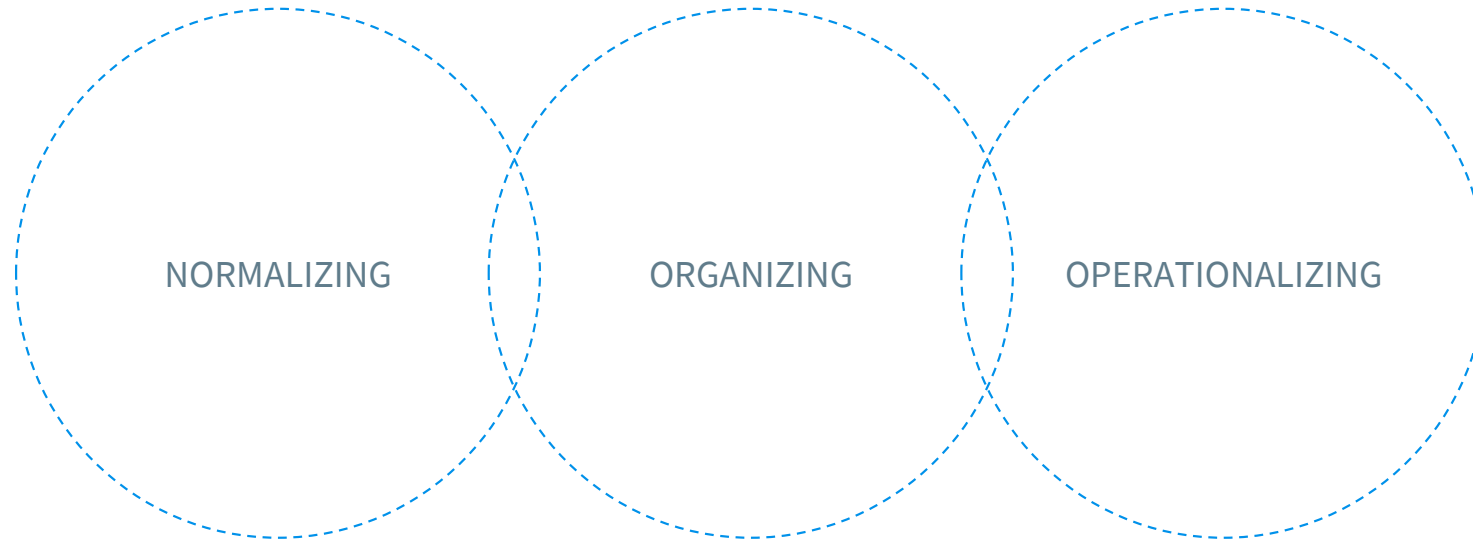
- ⦿ Equity office created in 2016
- ⦿ Departments began hiring for Equity Inclusion Managers 2021
- ⦿ PARD Long Range Plan
- ⦿ Interim City Manager

Project Framework



SUGGESTED PRIORITIZATION OF RECREATION AND SENIOR CENTER **CAPITAL NEEDS**

Equity Framework



Agenda

- 1. Three Case Studies**
- 2. City Of Austin Parks And Recreation Comparison**
- 3. Gap Analysis Prioritization Tool**
- 4. Additional Metrics And Data**
- 5. Next Steps**
- 6. Feedback**



1. Case Studies

- Minneapolis
- District of Columbia
- Portland

Minneapolis Parks and Recreation Board (MPRB)



The Minneapolis Parks and Recreation Board is the first park agency in the nation to incorporate a racial and economic equity mandate and measures into its **ordinances** that guides the capital improvement program. 2015 – Present.



20-Year Neighborhood Park Plan Criteria:

MPRB has developed a set of equity-based criteria for prioritizing capital investment and large rehabilitation projects.

Criteria Categories		Maximum Possible Points
Community Characteristics		[12 of 23 Total]
	Racially Concentrated Areas of Poverty	5
	Neighborhood Population Density	3
	Youth Population of Neighborhood	2
	Neighborhood Crime Statistics	2
Park Characteristics		[11 of 23 Total]
	Park Asset Condition	5
	Age of Park Assets	3
	Proportion of Value	3

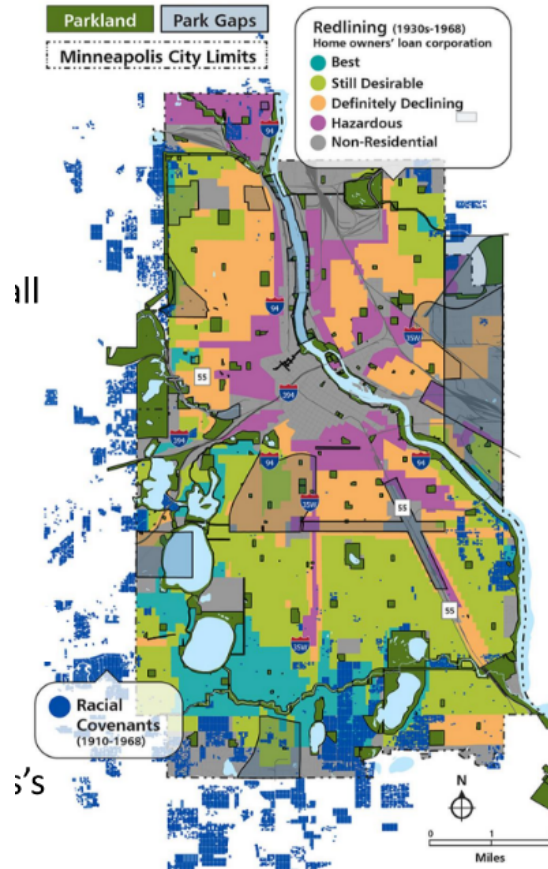
Results:

The scoring of parks results in a matrix that ranks all parks by overall Need

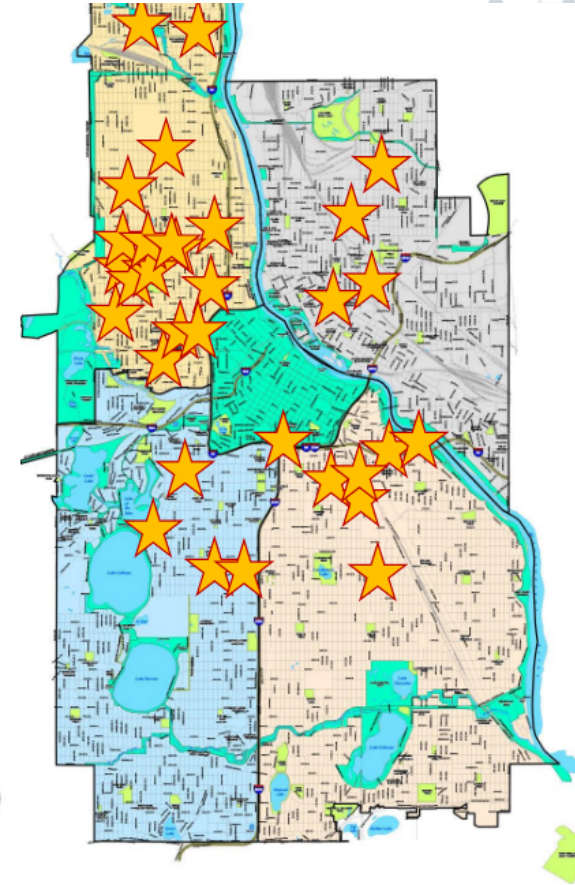
- Asset/facility need
- Community need

Map shows early equity projects. Note correlation with Minneapolis's historic context.

Historic Context

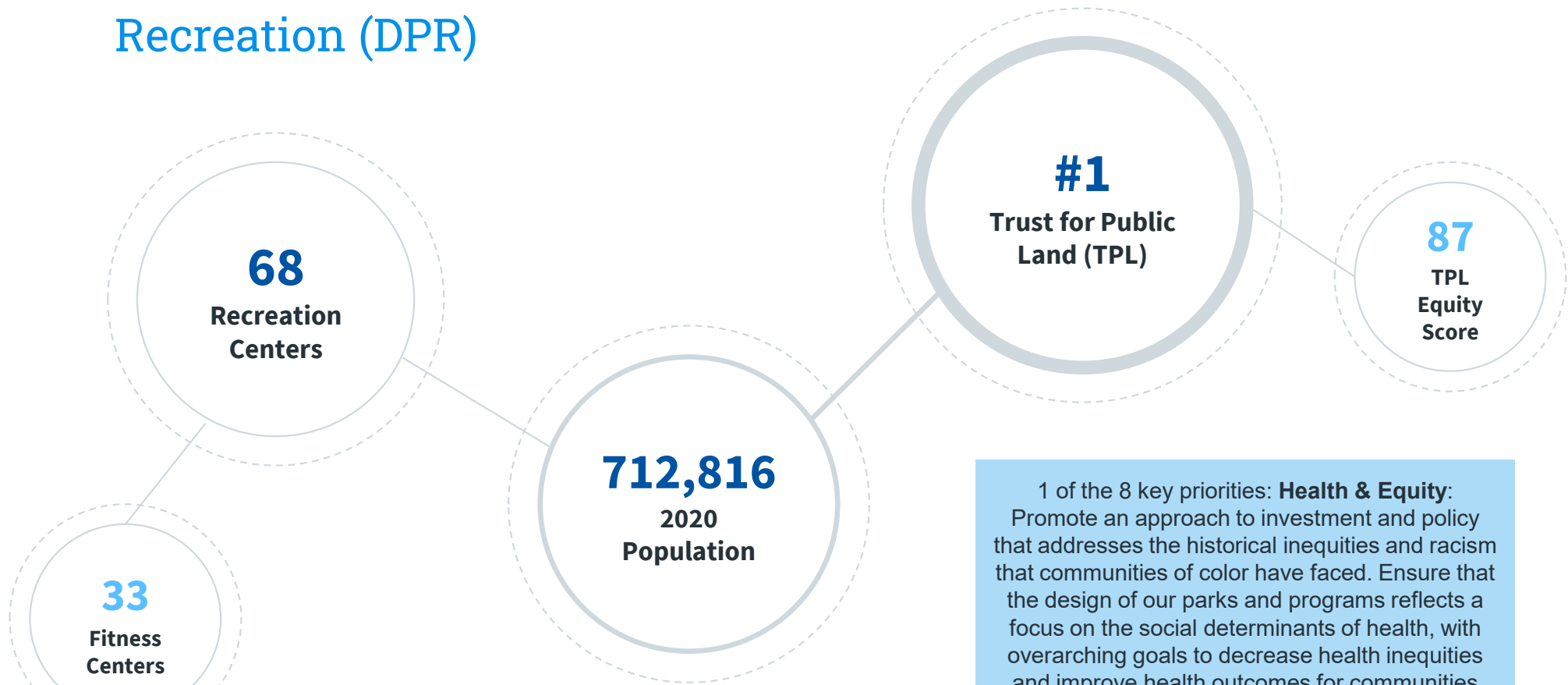


Identified Projects



* Source: Equitable Park Investments 3 Cities, 3 Stories, NRPA Conference 2022 **12**

District of Columbia Parks and Recreation (DPR)



1 of the 8 key priorities: **Health & Equity:**
Promote an approach to investment and policy that addresses the historical inequities and racism that communities of color have faced. Ensure that the design of our parks and programs reflects a focus on the social determinants of health, with overarching goals to decrease health inequities and improve health outcomes for communities suffering from long-standing, systemic inequities.

Results:

EQUITY FRAMEWORK

Site	Ward	Equity Index	Growth Index	Community Engagement	Community Need	Community Score	Site Use	Facility Condition	Site Engagement	Site Need	Site Score	All	Lack of recent investment
Stead Park Recreation Center	2	0.34	0.30	0.12	0.88	0.40	0.09	0.13	0.15	0.45	0.28	0.37	
Swampoodle Park	6	0.46	0.98	0.39	0.96	0.93	0.00	0.03	0.03	0.82	0.30	0.87	
T St., Park	2	0.34	0.50	0.35	0.69	0.52	0.00	0.00	0.00	0.27	0.09	0.31	●
Takoma Recreation Center	4	0.52	0.11	0.12	0.55	0.25	0.77	0.84	1.00	0.00	0.89	0.79	
The Park at LeDroit	1	0.43	0.23	0.19	0.76	0.39	0.00	0.08	0.06	0.36	0.17	0.26	
Town Center Parks	6	0.51	0.45	0.35	0.40	0.43	0.00	0.00	0.00	0.18	0.06	0.20	
Trinidad Recreation Center	5	0.81	0.22	0.10	0.77	0.52	0.42	0.42	0.13	0.36	0.46	0.64	
Turkey Thicket Recreation Center	5	0.57	0.12	0.27	0.58	0.36	1.00	0.95	0.79	0.18	1.00	0.99	●



Equity Index – One of the Eight Equity Framework Metrics

A guiding factor in site selection and a critical strategy to ensure that equity is infused throughout this plan and these investment recommendations. All data categories were normalized on a zero-to-one scale with zero being the least prioritized from an equity perspective, and one being the most prioritized.

1 Percent of individuals living in poverty *

2 Percent of individuals identifying as Black, Indigenous, or People of Color*

3 Percent of individuals living with a disability*

4 Rate of violent crime per resident

5 Percent of individuals under age 18*

6 Percent of individuals aged 65 or older*

7 Percentage of individuals who are obese**

8 Percentage of individuals over 5 who speak English “less than very well” *

9 Percentage of households with no vehicle access divided by the number of metro entrances within a half-mile walkshed plus 1

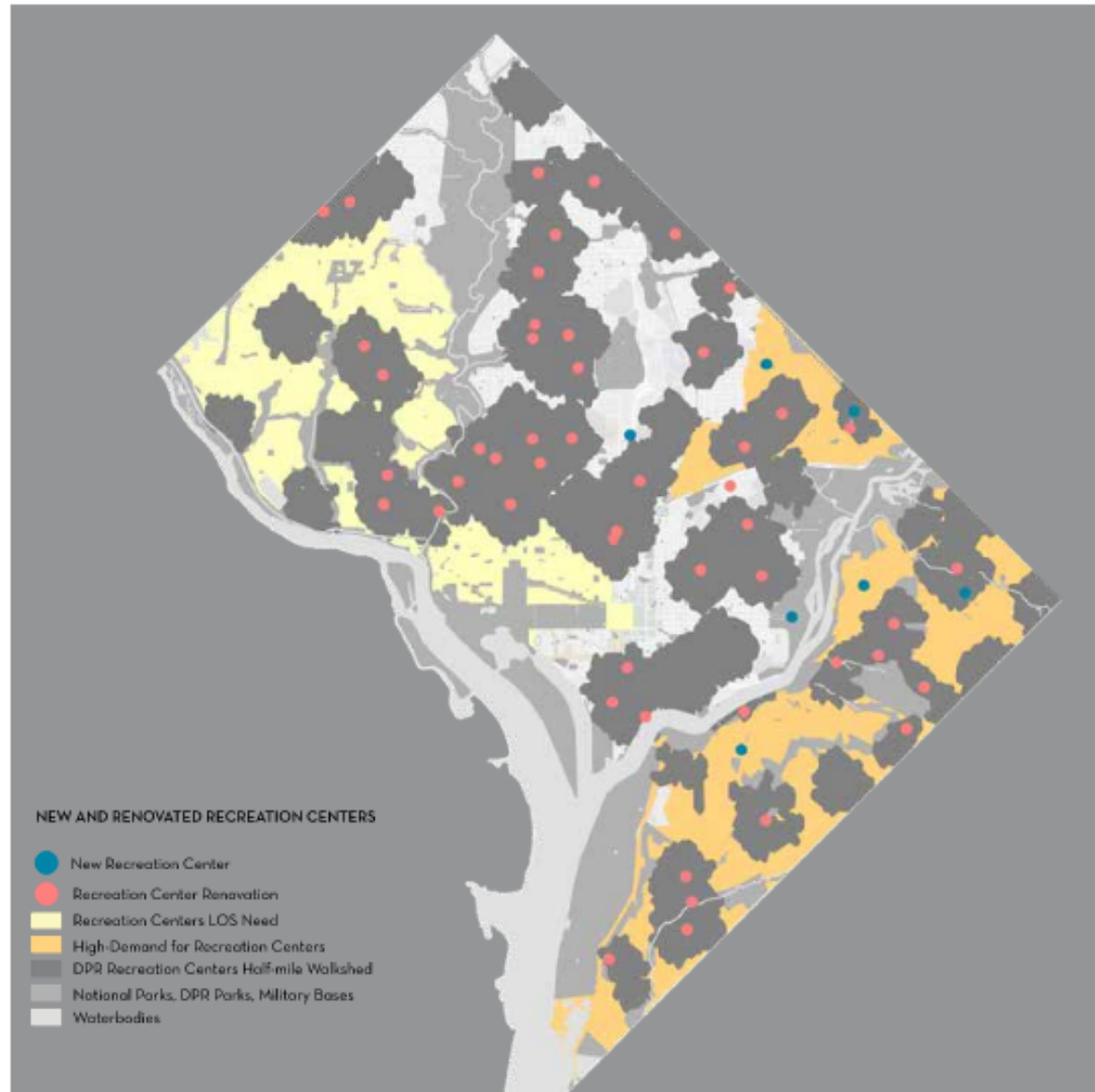
*Sourced from 2015–2019 ACS Census

**Sourced from 2021 CDC PLACES

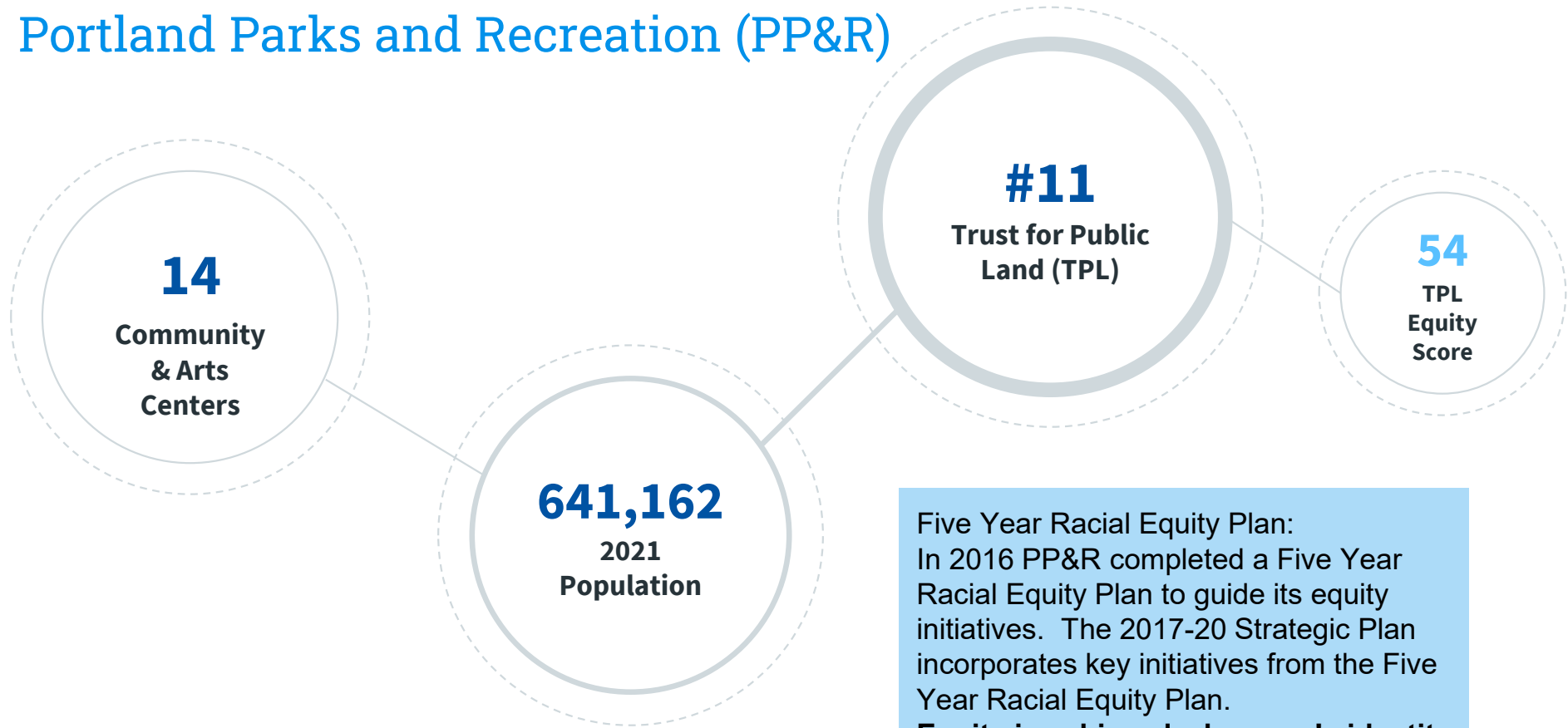


Results:

Recommendations
for New and
Renovated
Recreation Centers



Portland Parks and Recreation (PP&R)



Five Year Racial Equity Plan:
In 2016 PP&R completed a Five Year Racial Equity Plan to guide its equity initiatives. The 2017-20 Strategic Plan incorporates key initiatives from the Five Year Racial Equity Plan.
Equity is achieved when one's identity cannot predict the outcome. [Working definition from The City of Portland's Office of Equity and Human Rights](#)

Racial Equity Toolkit (RET)

Developed by Portland's Office of Equity and Human Rights

RACIAL EQUITY TOOLKIT



PP&R 5-Year Racial Equity Plan: Six Goals

The plan outlines the bureau strategy and key actions, with measurable performance measures and a timeline for completion of each strategy. Each strategy outlined has an identified champion and other bureau staff that will be responsible for its implementation.

1 Change existing services within the bureau using racial equity best practices.

2 End disparities in City government hiring and promotions.

3 Strengthen outreach and public engagement for communities of color and refugee and immigrant communities.

4 Increase access to culturally and linguistically responsive services for communities of color and refugee and immigrant communities.

5 Provide equitable access to City services to all residents.

6 Meet or exceed Citywide contracting goals for Minority Business Enterprises (MBE).

Some of the Strategies

- ❖ 80% of employees report in the annual employee survey that they agree or strongly agree the work environment values racial diversity.
- ❖ Utilize census data disaggregated by race to specify goals to address demographic and economic needs of community center service areas.
- ❖ Ensure CIP rating for all capital projects includes Vulnerability Index score. Identify priority investments in properties that reduce the service gap to communities of color and refugee and immigrant communities.

Results: No data published.

Process Implementation Timeline Objective 4—Strategy 1				
2017 >	2018 >	2019 >	2020	2021
Evaluation Tool: Equity & Inclusion Quarterly Report				
Due Date: 2019				
Lead Staff: Equity & Inclusion Outreach Coordinator				
Champion: Principal Management Analyst				

Process Implementation Timeline Objective 5—Strategy 1				
2017 >	2018 >	2019 >	2020 >	2021
Evaluation Tool: GIS map of completed projects				
Due Date: 2020				
Lead Staff: Project Construction Managers				
Champion: Asset, Development & Planning Manager				



2. City of Austin

How do we Compare

Austin Parks and Recreation



We strive to reflect diversity, equity and inclusion in all of our programs and services.



of Facility Comparisons

Source: National Recreation and Parks Association (NRPA)

	Austin	National Median # Residents per facility for Populations over 250,000B	Austin – Above or Below median
# people per recreation center*	74,167	65,639	Below
# people per community & activity center**	107,131	118,333	Above
# people per senior center	482,089	310,410	Below

*PARD facilities with a gymnasium

**PARD facilities without a gymnasium



3. **Prioritization Tool**

CoA PARD CIP Suitability Modeler

PARD Equity Tool – CIP Prioritization

GIS based suitability modeler.

Description

Utilize GIS software paired with weighted metrics to help facilitate an equity model that produces heat maps to identify prioritized areas of CIP development and/or expansions.

Strategy

Facilitate discussion groups to identify applicable metrics and their associated weight.

Results

Color coded maps and tables listing high prioritized areas in need of development or improvements.



Example Gap Analysis of Parkland - Metrics

20%

People of Color

Inverse of percent white alone, non-hispanic population

20%

Dist. From Parks

Distance from existing developed parks.

20%

Population Density

Calculated using internal CoA maintained land use layer and estimated population per residential unit.

10%

Below Median Income

Percent of population earning below Austin median income of \$78,000/year

10%

Children

Percent of population ages 18 or below

10%

Health Outcomes

National percentile for health outcomes including rates of asthma, diabetes, and heart disease

5%

Urban Heat Island

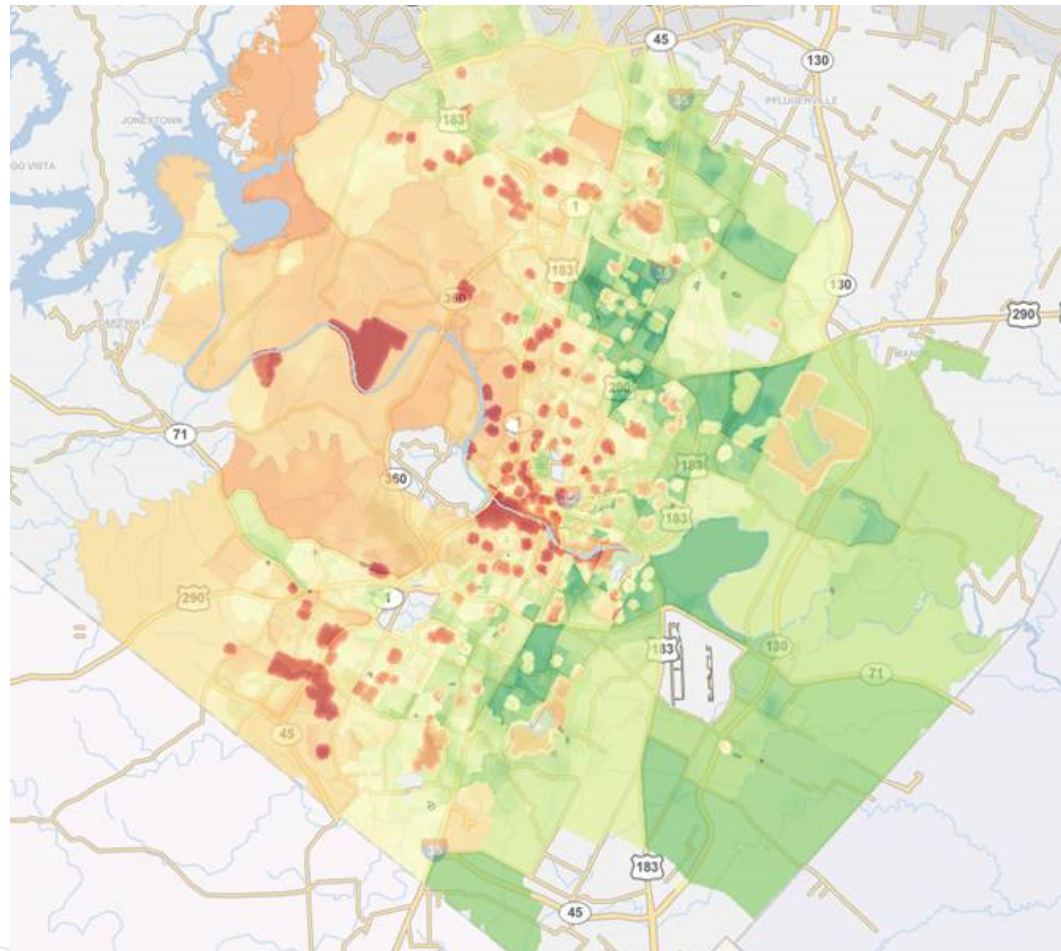
Increased surface and air temperatures as a result of the conditions of the natural and built environment.

5%

Linguistic Isolation

Percent of population 5 years and over in limited English household

Example Gap Analysis of Parkland – Map Result



- Higher Priority Area
- Lower Priority Area

Example Gap Analysis of Parkland – Table Result

Undeveloped parks

Rank	Park Name	Park Score	Service Area Score
1	Jamestown Neighborhood Park	77	73
2	Woodland Pocket Park	75	70
3	Georgian Pocket Park	74	71
4	Elroy Neighborhood Park	68	67
5	Old Moore's Crossing Neighborhood Park	66	62
6	Barwood Neighborhood Park	66	71
7	Austin's Colony Neighborhood Park	65	63
8	Pioneer Crossing Neighborhood Park	62	62
9	Grand Meadow Neighborhood Park	62	56
10	Musket Valley Neighborhood Park	62	61
11	Tahoe Trail Pocket Park	62	58
12	Marble Creek Neighborhood Park	61	59
13	Cooper Neighborhood Park	59	59
14	Red Bluff Neighborhood Park	57	57
15	Archstone Pocket Park	57	57
16	Clawson Neighborhood Park	57	55
17	Westcreek Pocket Park	54	54
18	Ricky Guerrero Neighborhood Park	54	51
19	Texas Oaks Neighborhood Park	53	53
20	Walnut Bend Neighborhood Park	53	57
21	Wunneburger Neighborhood Park	52	54
22	College Row Pocket Park	52	55
23	Davis Hill Neighborhood Park	50	48
24	Lantana Neighborhood Park	49	51
25	Moccasin Neighborhood Park	48	47
26	Swede Hill Pocket Park	47	46
27	Salt Springs Neighborhood Park	46	45





4. **Assessment Data**

Additional Prioritization Metrics

Facility Condition Index (FCI) Scores

Pickfair Community Center	2%	Good
Dottie Jordan Recreation Center	6%	Fair
Alamo Recreation Center	6%	Fair
Rodolfo "Rudy" Mendez Recreation Center	1%	Good
Lorraine "Grandma" Camacho Activity Center	2%	Good
Delores Duffie Recreation Center	1%	Good
Danny G McBeth Recreation Center	4%	Good
Hancock Recreation Center	1%	Good
Dorris Miller Auditorium	14%	Poor
Austin Recreation Center	0.4%	Good
Parque Zaragoza Recreation Center	1%	Good
South Austin Recreation Center	2%	Good
Givens Recreation Center	12%	Poor
Turner-Roberts Recreation Center	1%	Good

George Morales Dove Springs Recreation Center	1%	Good
Gustavo "Gus" L. Garcia Recreation Center	1%	Good
Dittmar Recreation Center	1%	Good
Northwest Recreation Center	2%	Good
Oswaldo A.B. Cantu/Pan American Recreation Center	0.3%	Good
Montopolis Recreation and Community Center	0.3%	Good
Virginia L. Brown Recreation Center	0.3%	Good
City of Austin/YMCA North Austin Community Recreation Center	0.4%	Good

Conley Guerrero Senior Activity Center	1%	Good
Lamar Senior Activity Center	2%	Good
South Austin Senior Center	1%	Good

*Based on CoA GTW.B.2 measure to evaluate City Buildings.
For more information: <https://data.austintexas.gov/stories/s/ry4y-hdrx>

*Good = < 5%
*Fair = 5% to 10%
*Poor = >10%

Available Assessment Data

- ⊙ **Population:** Population within service area of the facility
- ⊙ **Location amenities:** Near outdoor recreation opportunities like trails, courts, pools?
- ⊙ **Building amenities:** Types of rooms available, gyms, dance, kitchens, art, boxing, track, etc.
- ⊙ **Sustainability:** Energy useage, available daylighting
- ⊙ **Accessibility:** Are all program areas accessible?
- ⊙ **Emergency Shelter:** Can it be used as a warming or cooling shelter and other emergencies?
- ⊙ **Safety:** Violent Crime within defined area around facility
- ⊙ **Walkability, Bike, & Transit Ratings:** Site specific raitings exploring access/transit
- ⊙ **# of Rentals / Permits:** Amount of comunnity use
- ⊙ **Work Orders:** Amount of maintenance issues over the past 10 years
- ⊙ **Historic Investment:** Amount of funding at each facility over the past 10 years
- ⊙ **Programs:** # of programs offered at each facility
- ⊙ **Users:** # of annual users at each facility



Additional Assessment Data

- ⦿ How do we group our facilities for comparison of equitable distribution of services?
- ⦿ Limit of Service: What are the service areas for each facility that we should explore?
- ⦿ What other data should we Include?



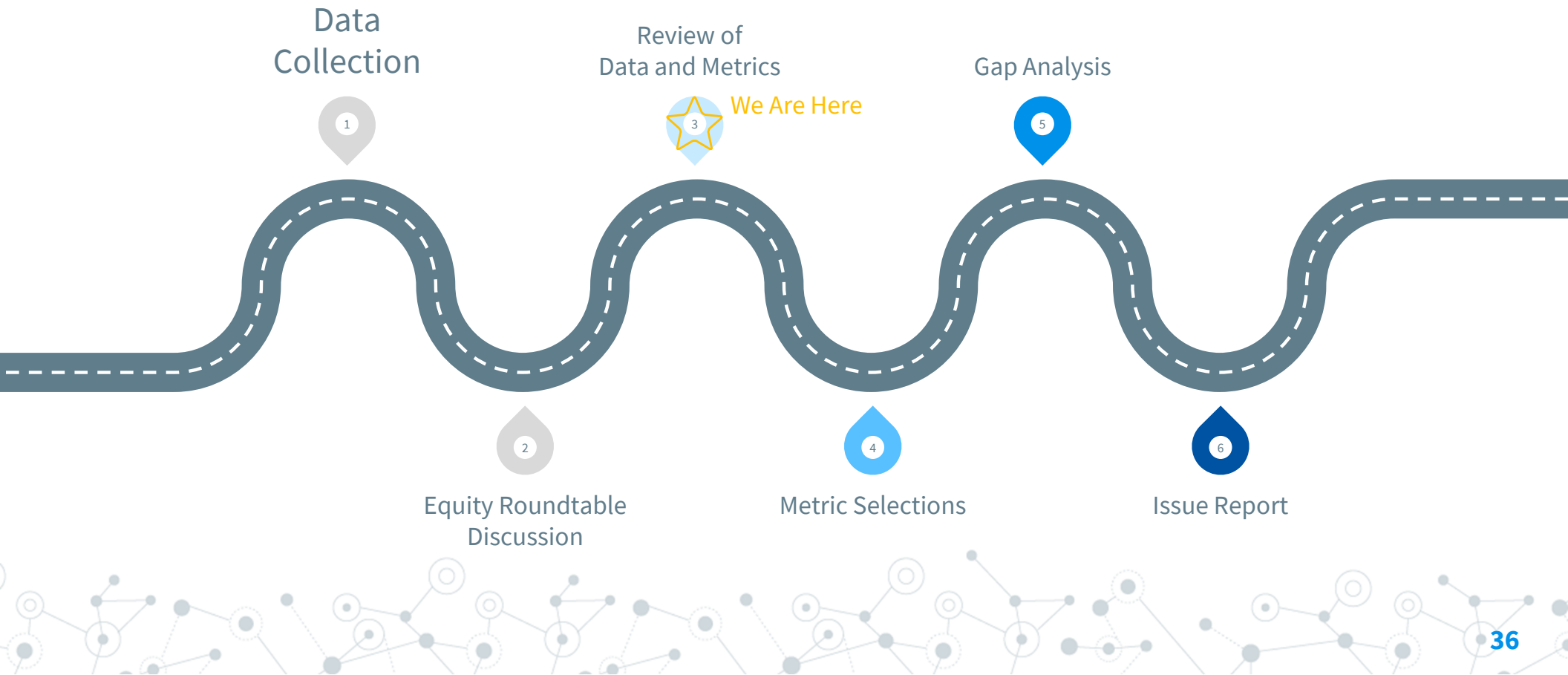
What is missing?



A decorative network diagram in the top-left corner, consisting of various sized circles (nodes) connected by thin lines (edges). Some nodes are solid grey, while others are hollow with a dashed border. The network is more dense on the left and tapers off towards the right.

5. Next Steps

Anticipated Road Map



Next Steps After The Final Report



Thank you!

Any questions?

