

Concept A



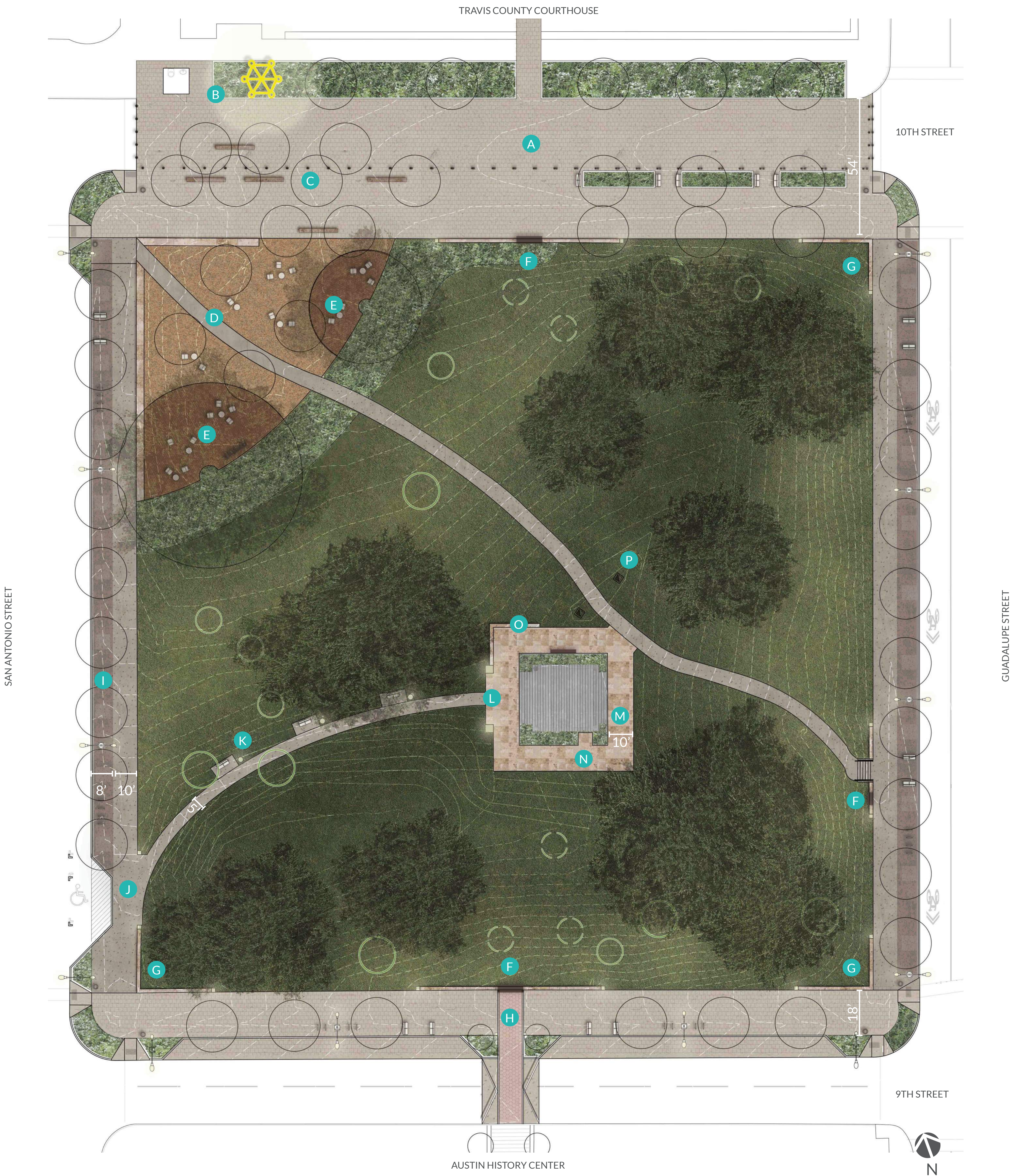
SYMBOLS

	Street Light		Existing Tree
	Bike Rack		Proposed Tree
	Bench		Native Planting Bed
	Trash Can		Interpretive Signage
	Cafe Table + Chairs		
	Sharrow Lane		

LEGEND

A Civic Promenade- 18' sidewalk with concrete unit pavers, vendor parking zone and speed table	I 9th Street- upgraded paver w/ parallel parking, speed table and street trees
B Off Site Public Restroom in Travis County Courthouse	J Silva Cells
C Parallel Parking w/ upgraded paving	K ADA Walk + Parking Zone
D Community Space- flat seating area with gravel terrace and shade trees	L Resting Area- park bench, lighting and new shade tree
E Stone Retaining Wall	M Illuminated Stone Pedestals
F Stepping Stones	N Concrete Walk
G Viewing Wall- 18" stone wall w/ interpretive signage	O Wheelchair Lift
H Corner Wall- 18" stone wall w/ lights and wayfinding	P Area Drains

Concept B



SYMBOLS

	Street Light		Existing Tree
	Bike Rack		Proposed Tree
	Bench		Native Planting Bed
	Trash Can		Interpretive Signage
	Cafe Table + Chairs		
	Sharrow Lane		

LEGEND

A	Civic Event Plaza- curbless plaza w/ upgraded pavers, vendor hookups and seating area	I	Silva Cells + Porous Paving
B	On Site Public Restroom w/ relocated Moon Tower	J	ADA Walk + Parking Zone
C	Tree Grove + Seating Zone	K	Resting Area- park bench, lighting and new shade tree
D	Community Space- signature stone wall, flat seating area and shade trees	L	Illuminated Stone Pedestals
E	Wood Deck- located under the shade of existing heritage trees to protect root zones	M	Cut Stone Walk
F	Viewing Wall- 18" stone wall w/ interpretive signage	N	Wheelchair Lift
G	Corner Wall- 18" stone wall w/ lights and wayfinding	O	Stone Retaining Wall
H	9th Street- concrete and stone pavers with parallel parking, speed table and formal row of street trees	P	Area Drains