

## BARTON SPRINGS POOL MASTER PLAN

### GOALS STATEMENT

- Return site to its rightful glory with cleaner water and more enjoyable experience
- Propose appropriate additions and renovations to pool, buildings and grounds
- Respect unique natural and historical setting
- Accommodate significant demands on Austin's most popular park amenity



## ZILKER BATHHOUSE ZONE

### PROJECT PLANNING PRIORITIES

- Focus on grounds and facilities on the north side of Barton Springs Pool and how they interact
- Provide safe, durable park facilities capable of handling increasing use for 50 years
- Appreciate the special environment and history of the Barton Springs area
- Increase capability of facilities and staff to deliver enjoyable programs and amenities
- Plan for exemplary, sustainable facilities
- Leverage resources with public/private partners



- Assess condition of facilities on north side of BSP from trailhead through Pecan Grove area
- Review developmental constraints
- Identify critical program needs
- Inform stakeholders and engage public to develop priorities
- Discuss rehabilitation of the historical facilities with particular attention to the Bathhouse
- Present alternatives with schematics and budgets
- Develop recommendations



- Public safety
- Impervious cover at limit
- Inadequate water quality elements
- Major facilities in flood zone
- Critical species habitat and corresponding educational commitments
- Historical designations
- Heritage trees



- Water quality elements should be added
- Pedestrian circulation is conflicted and major pathways are inadequate
- Zephyr conflicts with playscape and primary path
- Tree management and replacement plan should be developed
- Public restrooms and amenities need improvement
- Primary electric supply is old and loaded



- Signage should be enhanced
- Parking often exceeds capacity; overflow area needs Operations & Maintenance plan
- Vehicle circulation is often difficult; consider realignment and develop transit options
- Bike facilities could be improved
- Ped/bike western bridge needed to improve circulation
- Concession facilities could be improved



- Splash/Sheffield, attic workshop and some storage elements are non-conforming use and construction
- Ingress/egress needs improvement
- Six lanes of controlled entry, mostly automated
- More exits for building and pool users
- Plumbing systems should be replaced
- Additional family restrooms are needed
- Visitor/information function needs staffing and possibly improved location



- Aquatics needs expanded spaces for staff, first aid and storage
- Dressing areas are larger than current usage
- Most changing stalls need major repairs/ modifications
- Shower stalls could be increased
- Canopy structures need significant repairs
- Some (western) walls may need reinforcing





- S/S must remain in vicinity of Barton Springs Pool, Eliza and natural elements
- If S/S remain in Bathhouse as non-conforming use and construction, improvements and replacement would be severely restricted
- Egress (above flood plain) and accessible pathway need minor improvements
- Exhibits are somewhat dated



- Additional space for workshop, offices and education would enhance program delivery
- Any replacement facility should offer expanded capabilities
  - Possible visitor's/info center
  - Toilets for children and staff
  - Updated display, possibly underneath
- If moved, use of the vacated spaces is severely restricted



- Playscape should be safe and best in Austin
- Playscape area should be expanded with age appropriate elements
- Playscape should reflect natural environment with durable, faux natural design
- Seating, shade, water, fencing and family or children's restrooms should be nearby
- Safe bus loading zone is needed
- Possible Zephyr terminal relocation (at or east of maintenance barn) would enhance safety and circulation



- Funded projects
- Potential projects
- Bathhouse Repairs
- Bathhouse Rehabilitation

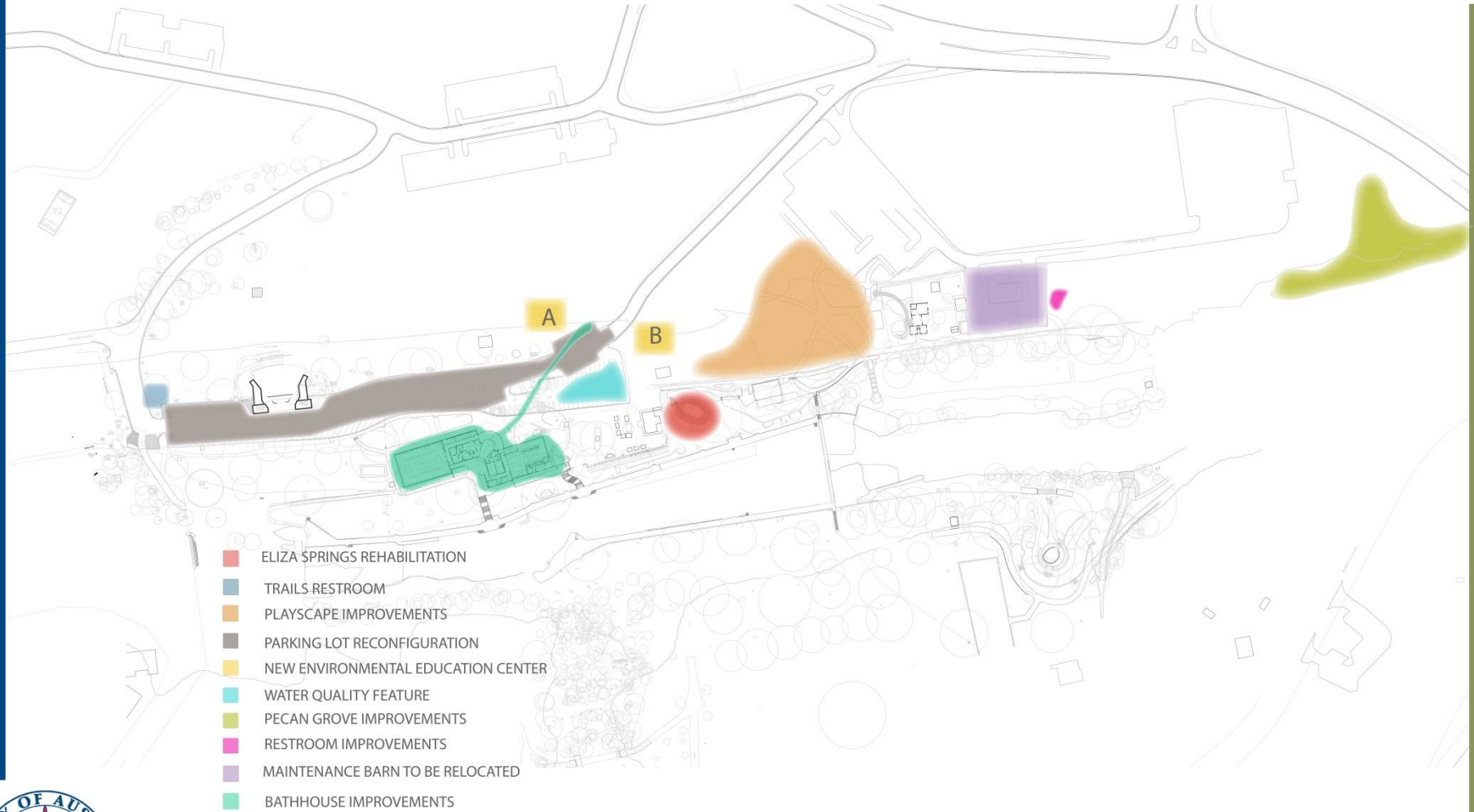


# SITE PLAN FUNDED PROJECTS



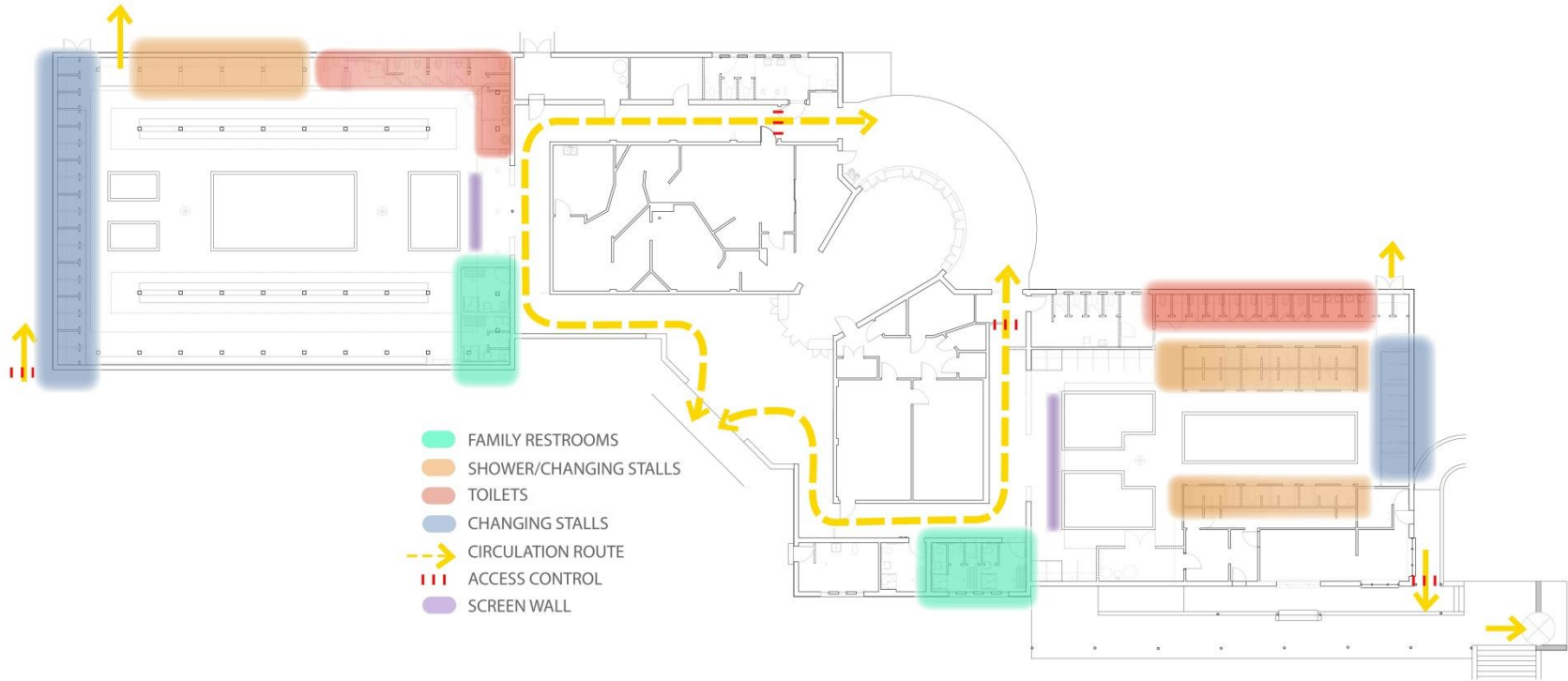
## ZILKER PARK IMPROVEMENTS AT THE BATHHOUSE ZONE

## SITE PLAN POTENTIAL PROJECTS

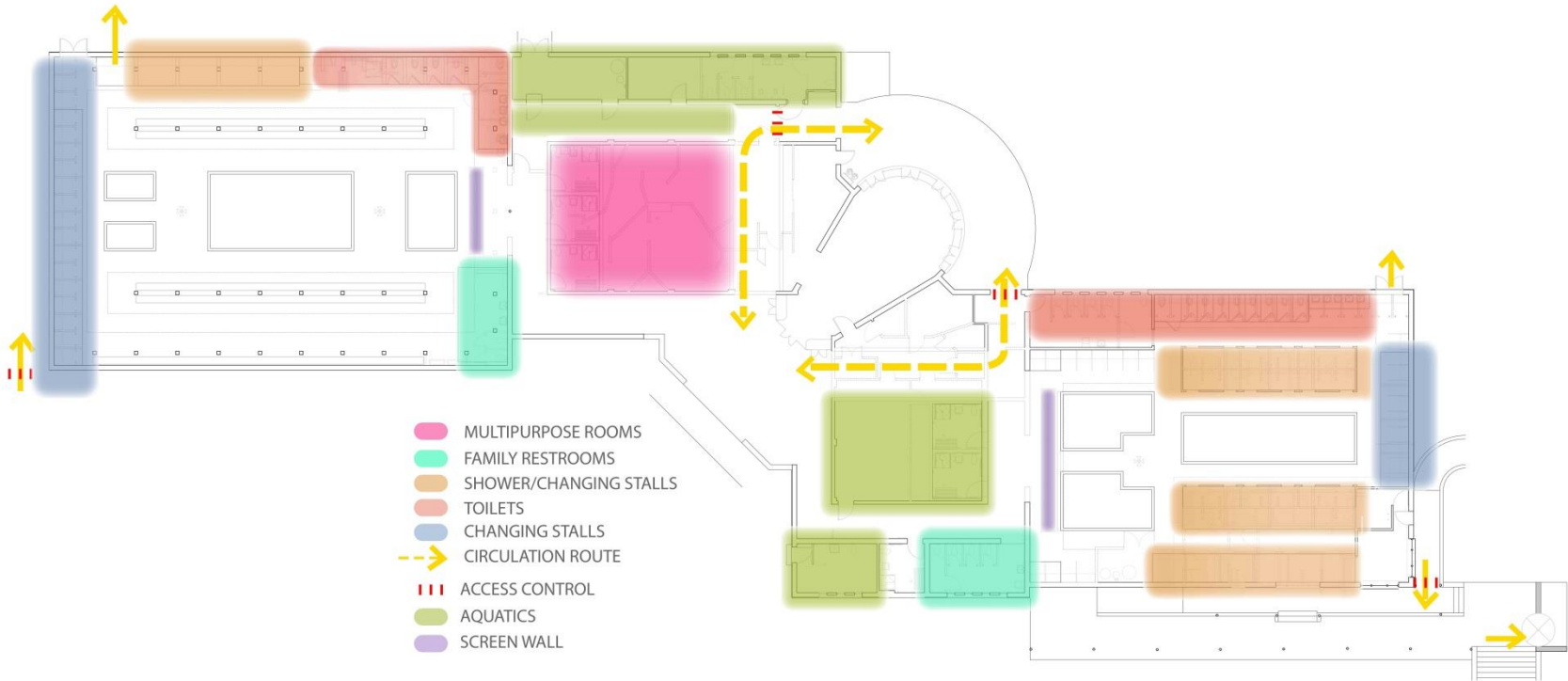


### ZILKER PARK IMPROVEMENTS AT THE BATHHOUSE ZONE

# BATHHOUSE REPAIRS



# BATHHOUSE REHABILITATION



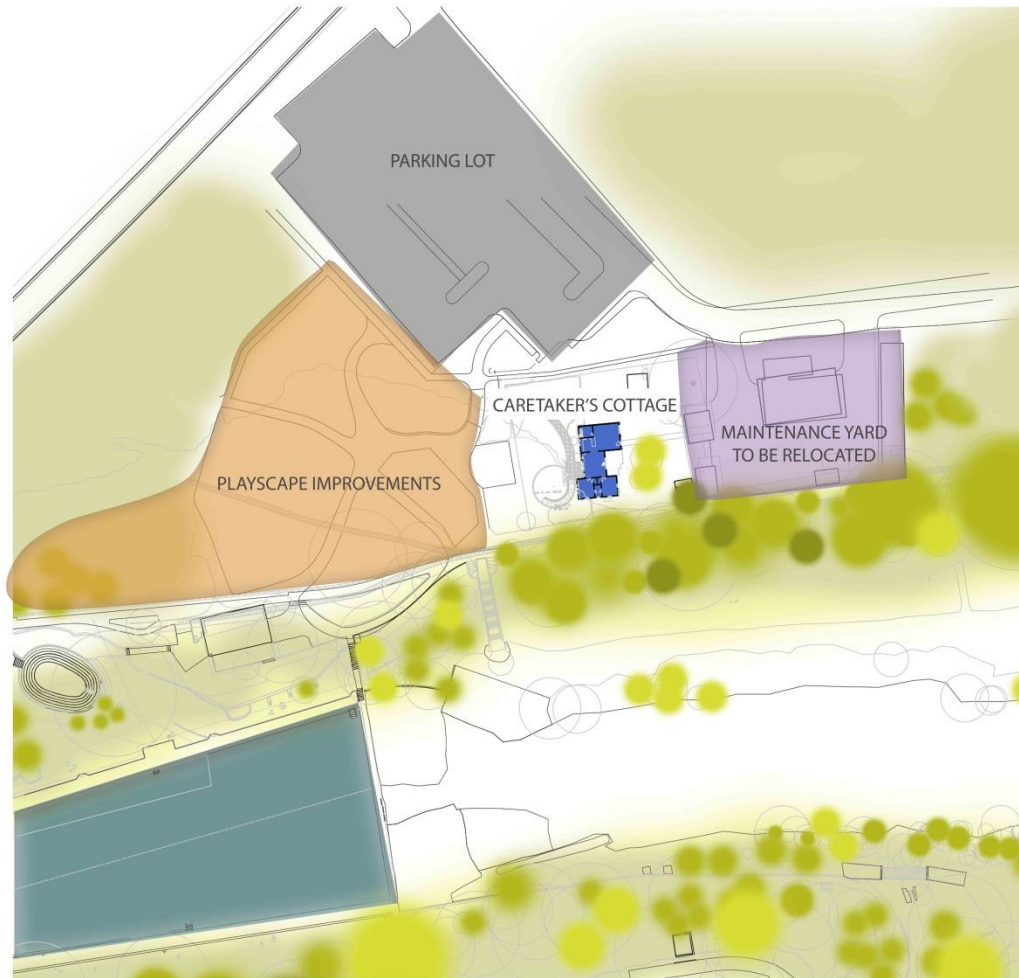
ZILKER PARK IMPROVEMENTS AT THE BATHHOUSE ZONE



# PARKING LOT RECONFIGURATION

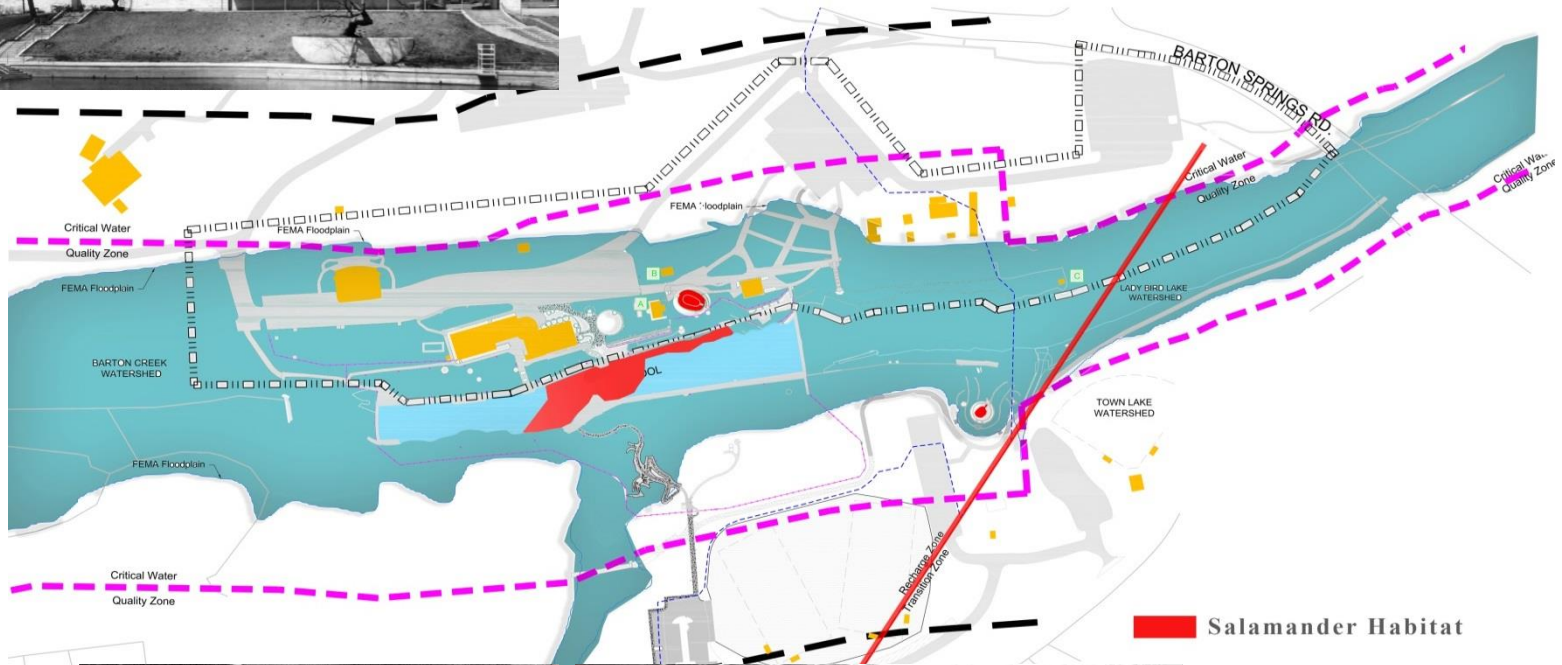


## PLAYSCAPE IMPROVEMENTS





# CONSTRAINTS



ZILKER PARK IMPROVEMENTS AT THE BATHHOUSE ZONE