

DESIGN REVIEW

Concept A

10TH STREET

Widen the sidewalk from 6' to 18' and realign the parking on both sides of the street to parallel

COMMUNITY SPACE

Regrade and flatten the existing seating area to promote gathering and maximize use of shade from the large existing trees. Steps along San Antonio street resolve grading at the sidewalk.



HISTORIC Bandstand

Provide a modest, accessible path to and around the Bandstand and historic walk



9TH STREET

Implement design principles of Great Streets to activate the edges



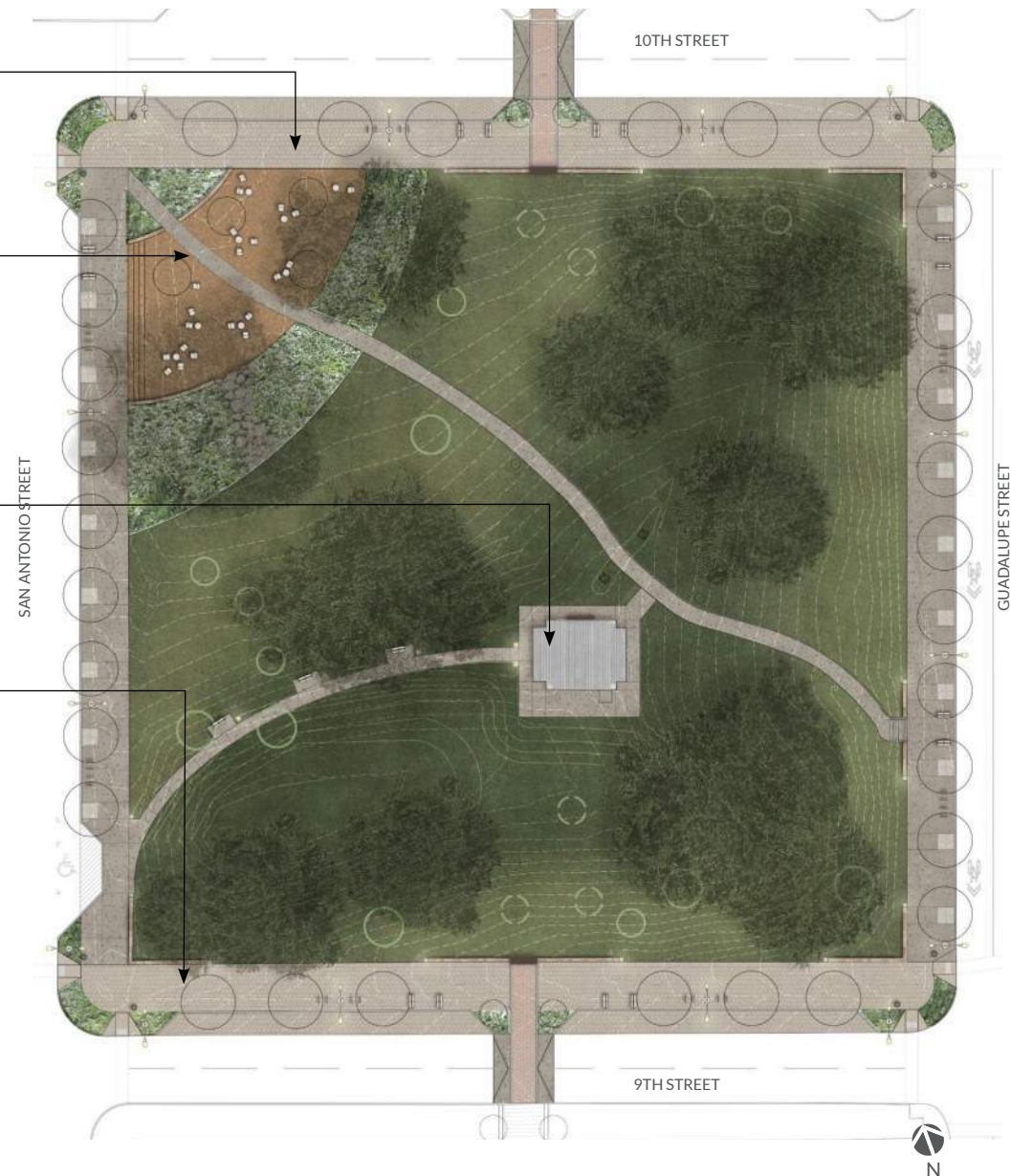
INTERPRETIVE SIGNAGE

Tell the story of Wooldridge with strategically placed signage



LIGHTING

Enhanced park standard lighting along historic and new ADA walk, as well as great streets standard ROW illumination





10th Street

support the Square's presence in the community

A. 18' Civic Promenade

Concrete unit paver sidewalk and parallel parking spaces; street trees with Silva Cells & structural soil

B. 18" Viewing Wall with Interpretive Signage



B1. Low cut stone wall with stone cap; match the cut & finish of the courthouse stone veneer; install interpretive signage plaque

B2. Low cut stone corner wall with stone cap; install "Wooldridge Square" est. 1839 letters

C. Vendor Parking Zone

Temporary pull-in, pull-out



D. Speed Table

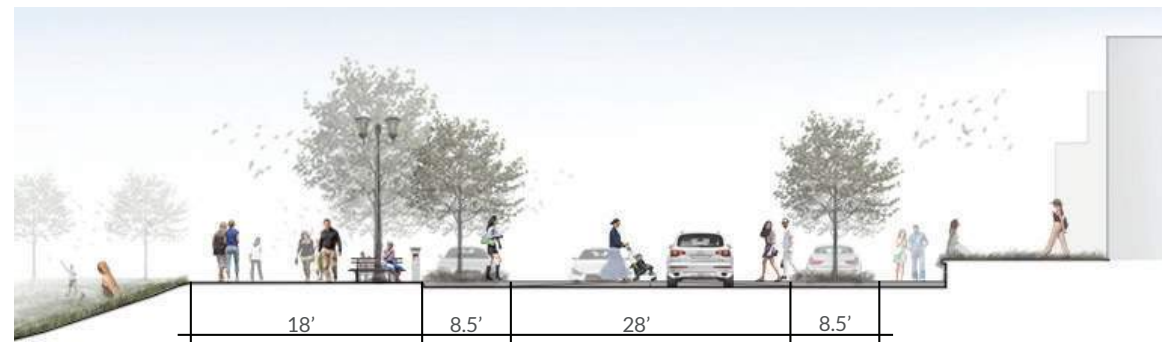
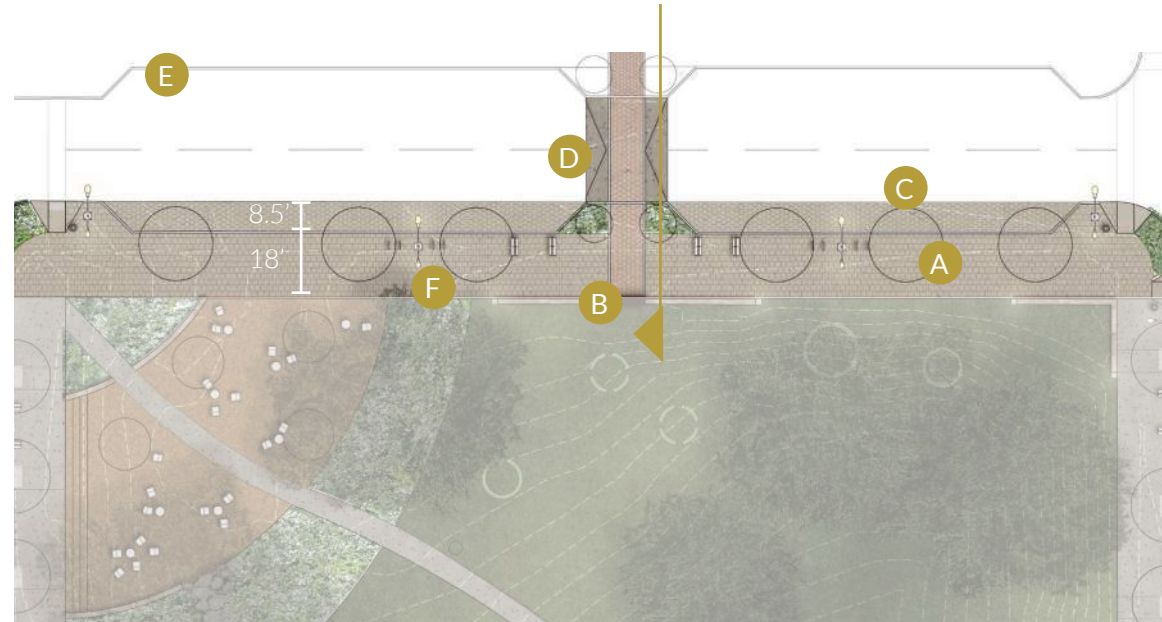
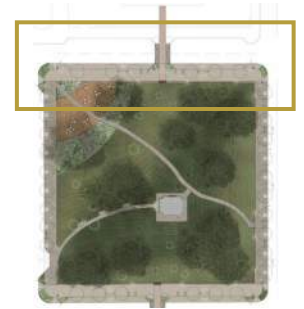
Mid block pedestrian crossing and traffic calming device

E. Off Site Public Restroom inside Courthouse

F. Upgraded Street Lighting and Furnishings

Meet Great Streets Standards

CONCEPT A



Pedestrian Zone

Parallel Parking

Speed Table

Parallel Parking

Travis County Courthouse

10TH STREET



Community Space

support the Square's presence in the community

CONCEPT A



A. Flat Seating Area with Gravel Terrace and Shade Trees



B. Gravel Terrace



C. Native Planting Bed



D. Stepping Stones



E. Stone Retaining Wall

Low cut stone veneer and cap seat wall to match the cut and finish of the courthouse stone veneer.

F. Historic Walk

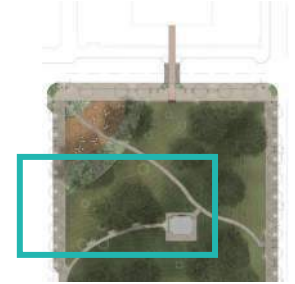
Alignment is preserved, but slope of historic walk is modified to accommodate level plaza



Historic Bandstand

achieve universal access

CONCEPT A



A. ADA Walk and Parking Zone



B. Resting Area

Provide three new benches along proposed walk; align new tree locations to benches to ensure shade; align new lighting along the walk at bench locations

C. Wheelchair Lift

Provide an outdoor rated lift on the south side of the Bandstand; modify Bandstand railing accordingly

D. Five Foot Decorative Hardscape

Provide accessible arrival point all around the Bandstand, as well as access to the existing path

E. Area Drains

Use grading to route water away from the Bandstand and toward new site low points

F. Relocated Trees

Relocate small existing trees to maintain viewshed and provide new walk with cooling shade



9th Street

elevate the pedestrian

A. 18' Civic Promenade

Concrete unit paver sidewalk and parallel parking spaces; street trees with Silva Cells and structural soil

B. Sharrow Lane



C. Speed Table



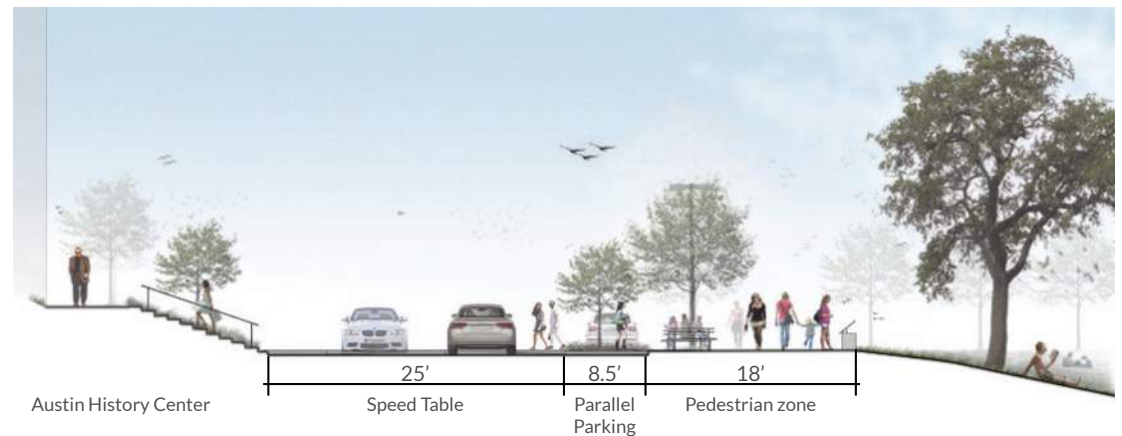
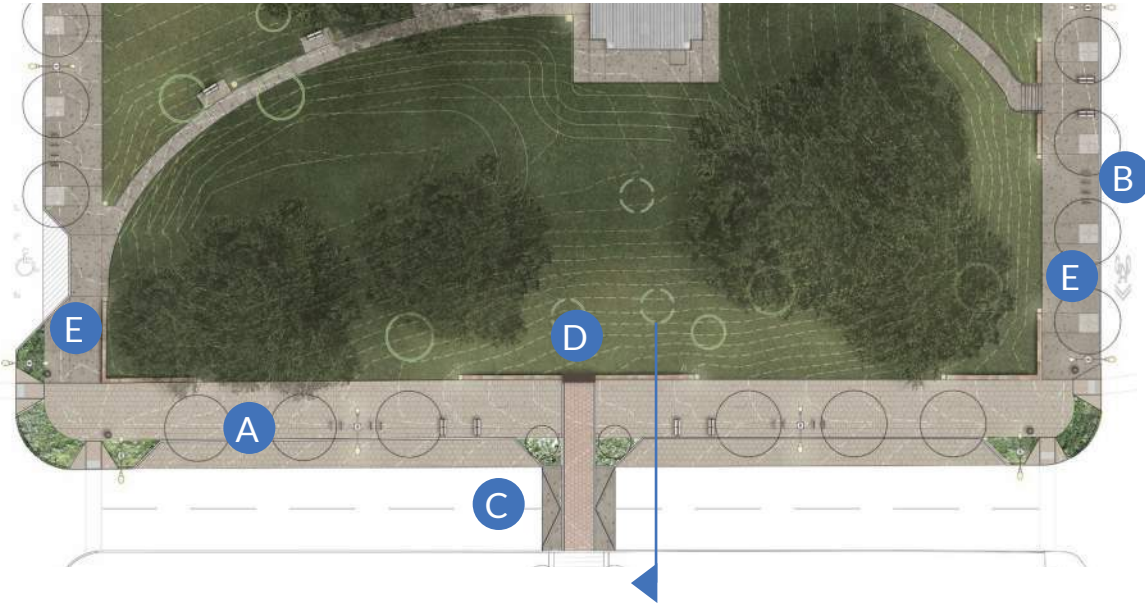
D. Low Stone Wall, Interpretive Signage, and Wayfinding

Cut stone veneer and cap to match the cut and finish of the Austin History Center veneer

E. Enhanced Paving

18' standard great street section- concrete sidewalk with tree grates, furnishings, and lighting

CONCEPT A



9TH STREET

CONCEPT A

Interpretive Signage

tell the story

A. Little Shoal Creek

Little Shoal Creek's original alignment daylighted at the Square and ran underneath the Bandstand

B. Environmental Design

Investment in native tree plantings and tree protection methodologies ensures the Square's longevity

C. The Bandstand

Texas politicians used the Bandstand for public addresses including prominent leaders such as President LBJ

D. The Walk

Gently curved sidewalk built in 1910 is unique for its material and scoring patterns and alignment

E. Mayor Wooldridge

The mayor played a prominent role in the Square rehabilitation as well as the artificial moonlight towers

F. Wayfinding

Welcome sign located at each corner of the Square

G. Historic Designations

The Square is noted as a historic feature both nationally and statewide



Concept B

10TH STREET

Close 10th street to vehicular traffic (retaining access for emergency vehicles only); upgrade the street to a pedestrian plaza with curbsless conditions and concrete unit pavers; a tree “grove” provides additional shade; a new restroom building is added into the plaza; vendor hookups provide power and water for festivals and special events

COMMUNITY SPACE

Regrade and flatten out the existing seating area to maximize gathering and use of shade from the large existing trees; stone steps are required along SA street to resolve grading at the sidewalk; wood decks are added under the shade of the existing trees to protect the root zones of the adjacent heritage trees

HISTORIC BANDSTAND

Celebrate the Bandstand’s civic character with a new ADA parking zone walk, and seating area; planting band and 10’ stone walk enhance Bandstand perimeter

9TH STREET

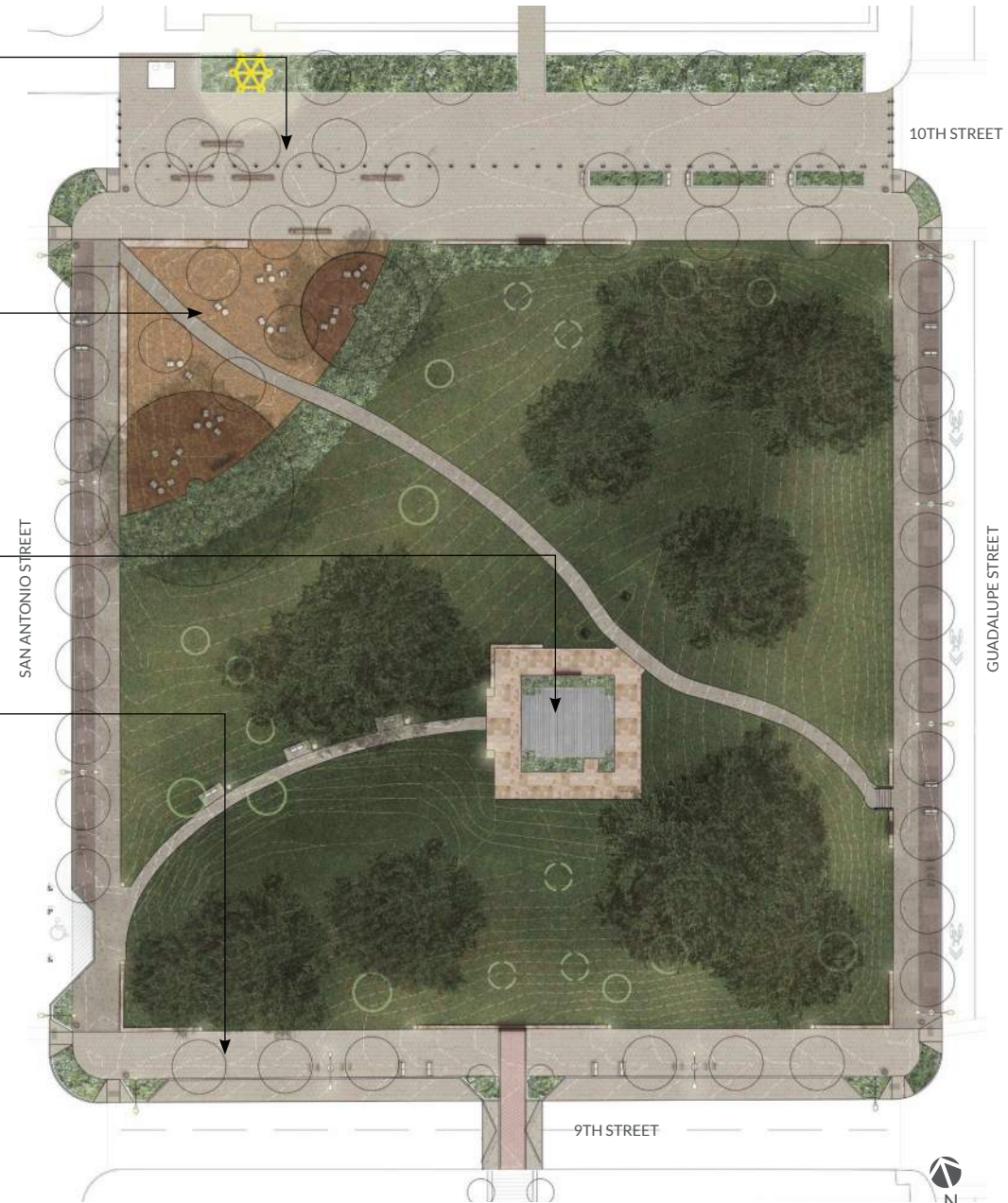
Institute sustainable principles with Silva Cells and porous paving around the street trees; parking on south side is removed to accommodate wider walk; cut stone sidewalks upgrades

INTERPRETIVE SIGNAGE

Tell the story of Wooldridge with strategically placed signage

LIGHTING

Relocate a moontower to the 10th street plaza; install standard lighting along new ADA walk; Great Street lighting on perimeter streets





10th Street

support the Square's presence in the community

A. Civic Event Plaza

Close 10th street to vehicular traffic; upgrade the street to a pedestrian plaza with curbless conditions and concrete unit pavers; tree 'grove' provides additional shade; a new restroom building is added into the plaza



B. Tree Grove + Seating Zone

With stone blocks and movable furnishings



C. Market + Vendor Zone

Vendor hookups with power and water for markets and special events

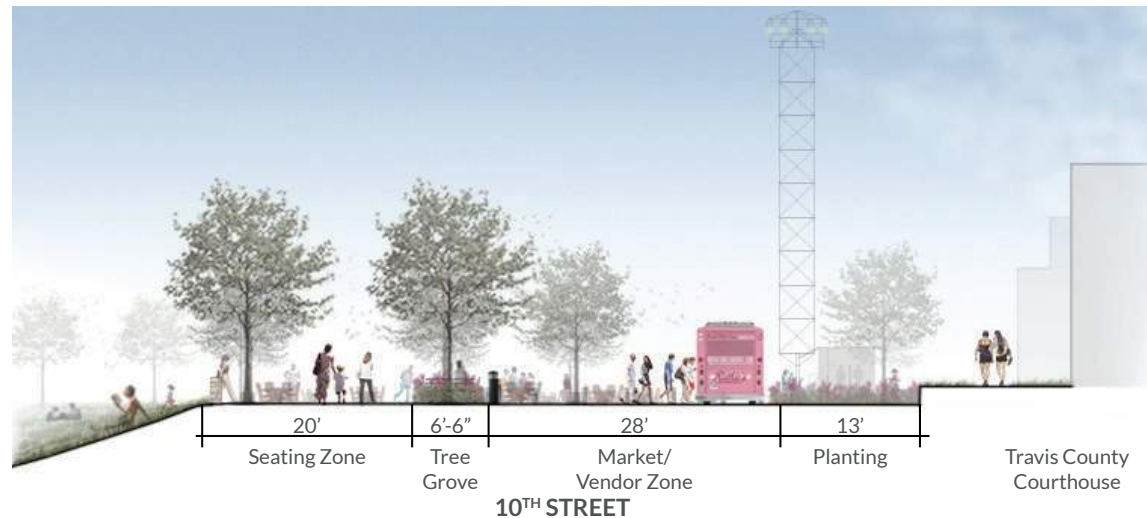
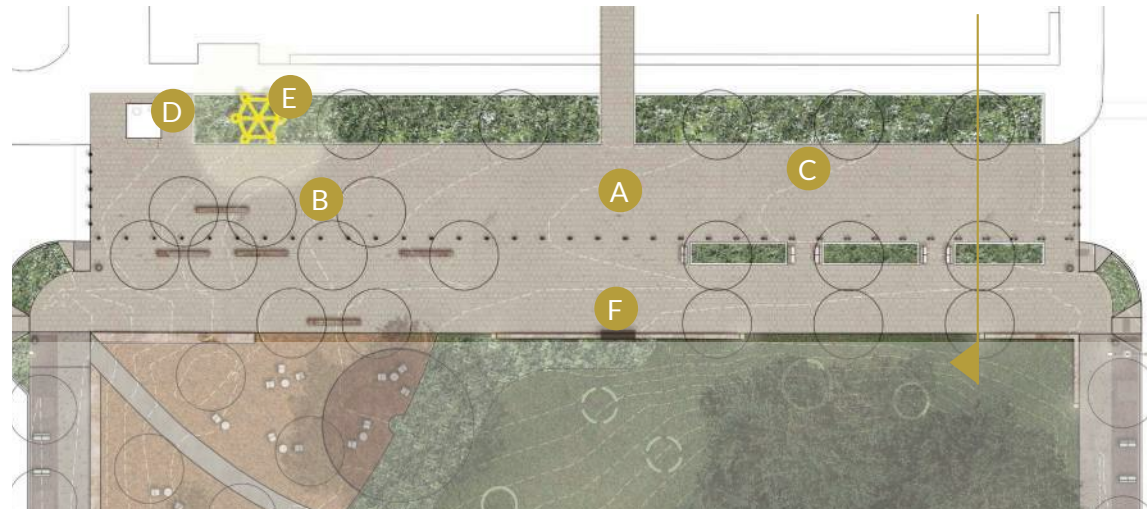
D. On Site Public Restroom

E. Relocated Moon Tower

F. 18" Viewing Wall with Interpretive Signage

Cut stone veneer & cap to match courthouse stone veneer

CONCEPT B

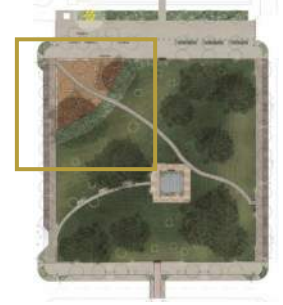




Community Space

support the Square's presence in the community

CONCEPT B



A. Wood Deck + Viewing Platform



B. Stone Retaining Wall

Low stone wall with solid stone blocks, sawn tops and split faces

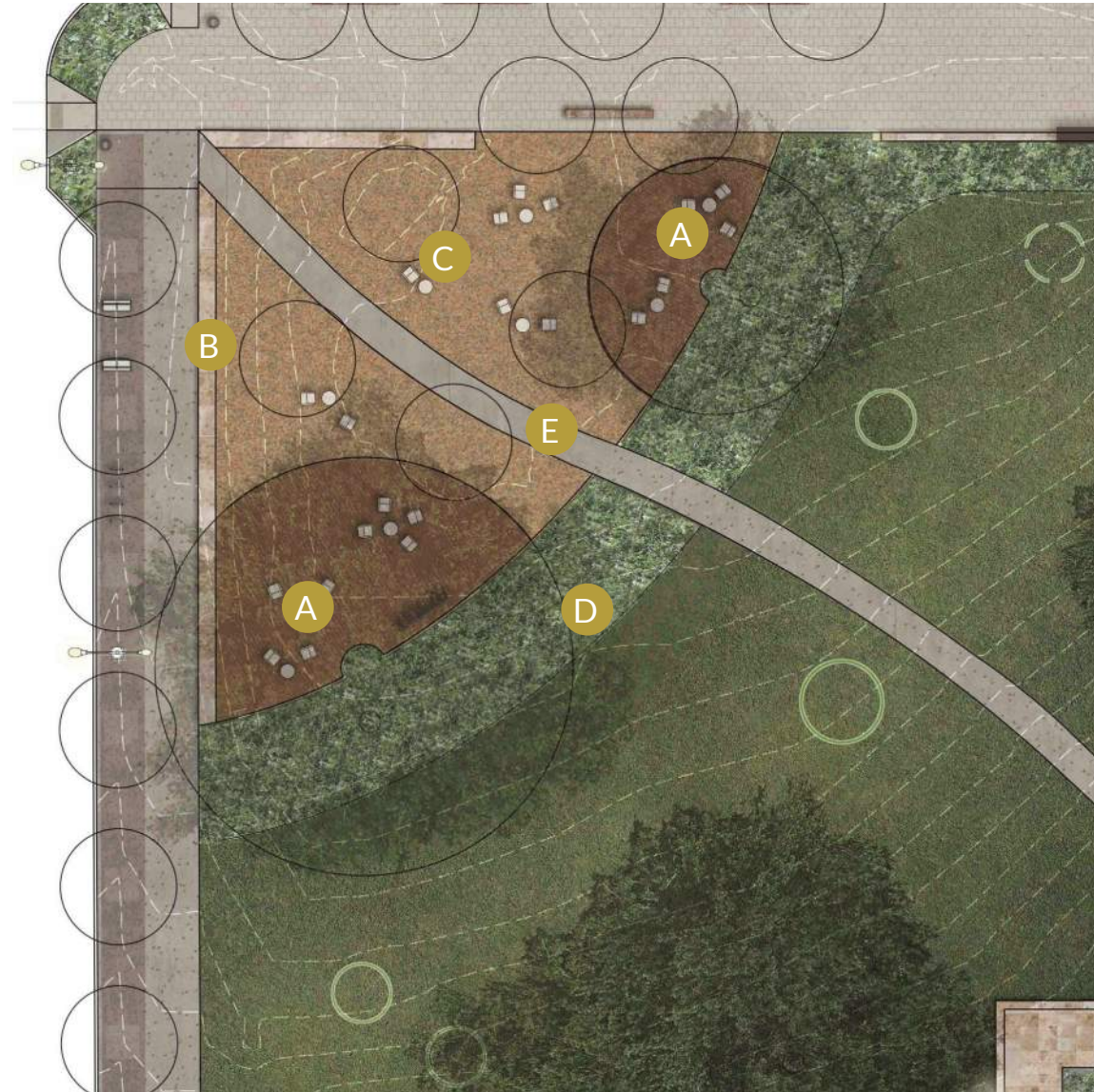
C. Gravel Plaza + Ornamental Tree Grove

D. Native Planting

Provide visual screen of community space from Bandstand

E. Historic Walk

Slope of historic walk is modified to accommodate level plaza while alignment is preserved





A. Illuminated Stone Pedestal

B. Cut Stone Paving

C. Planting Bed + Interpretive Signage



D. Stone Retaining Wall

E. Feathered Slope

F. Area Drains

Deflect water from Bandstand into new atrium drains

G. Resting Area

Shaded seating area with relocated tree, bench and lighting

H. ADA Parking

I. Relocated Trees

Relocate existing trees to maintain viewshed and provide shade for the new ADA walk



Historic Bandstand

grading study



A. Existing Grade

The existing grade would impose upon and make impossible the proposed 10-foot walk.



B. Partially Graded with Retaining Wall

Grading beyond the new walk remains as existing, retained by a 2-foot wall. Some terrain within the boundaries of the walk is cut.



C. Fully Graded

In order to resolve grade differences without the addition of a wall, terrain in and around the boundary of the new walk is cut.



A. 18' Great Street Sidewalks

With Silva Cells and porous paving



B. Interpretive Signage and Wayfinding

C. 18' Great Street Sidewalks

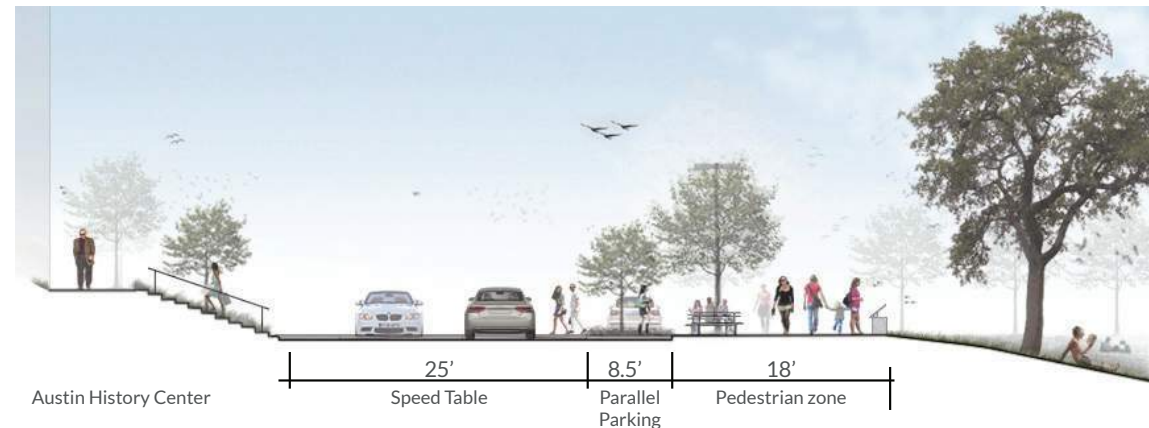
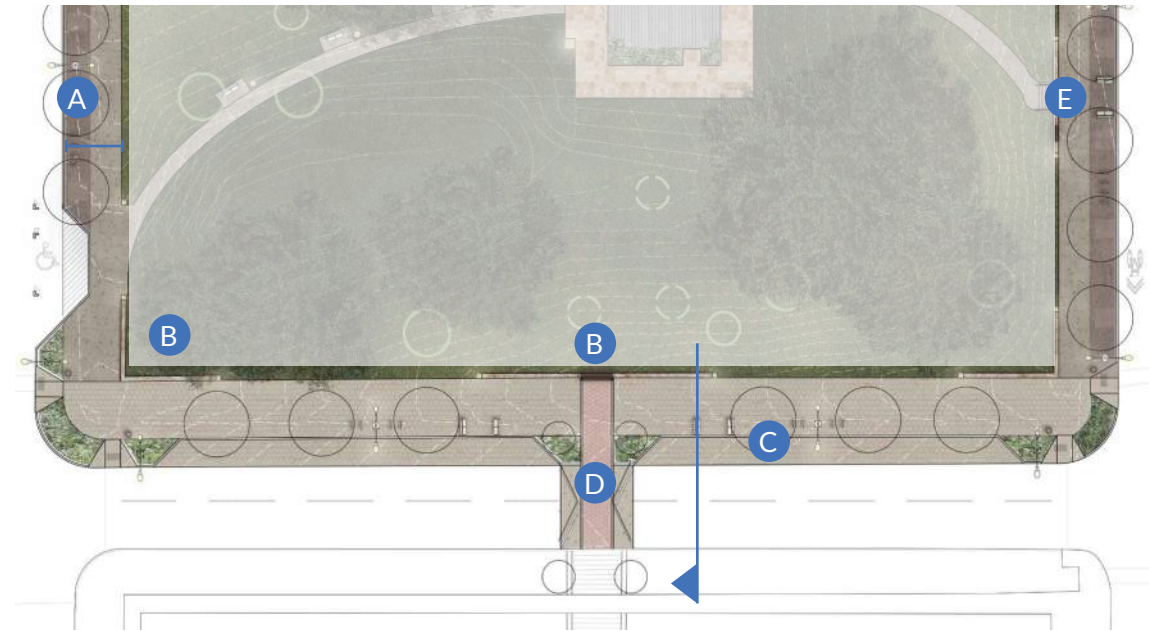
With cut stone paving, Silva Cells, upgraded lighting, and furnishings

D. Speed Table

Mid-block, aligned to stairs at Austin History Center

E. New handrails

Added to existing historic staircase



CONCEPT B

Interpretive Signage

tell the story

A. Little Shoal Creek

Little Shoal Creek's original alignment daylighted at the Square and ran underneath the Bandstand

B. Environmental Design

Investment in native tree plantings and tree protection methodologies ensures the Square's longevity

C. The Bandstand

Texas politicians used the Bandstand for public addresses including prominent leaders such as President LBJ

D. The Walk

Gently curved sidewalk built in 1910 is unique for its material and scoring patterns and alignment

E. Mayor Wooldridge

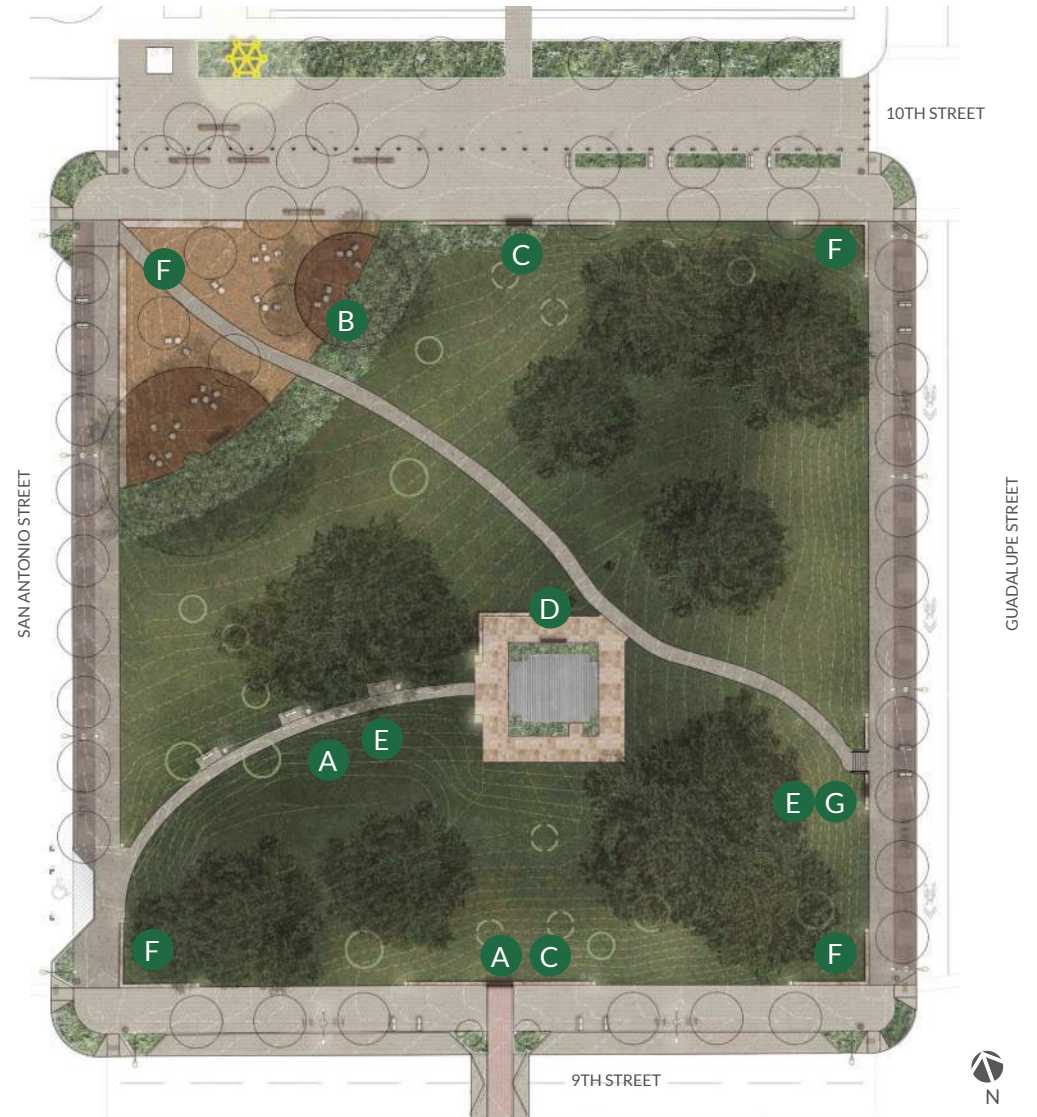
The mayor played a prominent role in the Square rehabilitation as well as the artificial moonlight towers

F. Wayfinding

Welcome sign located at each corner of the Square

G. Historic Designations

The Square is noted as a historic feature both nationally and statewide



Concept A



10TH STREET
A civic promenade with upgraded paving, parallel parking, and furnishings

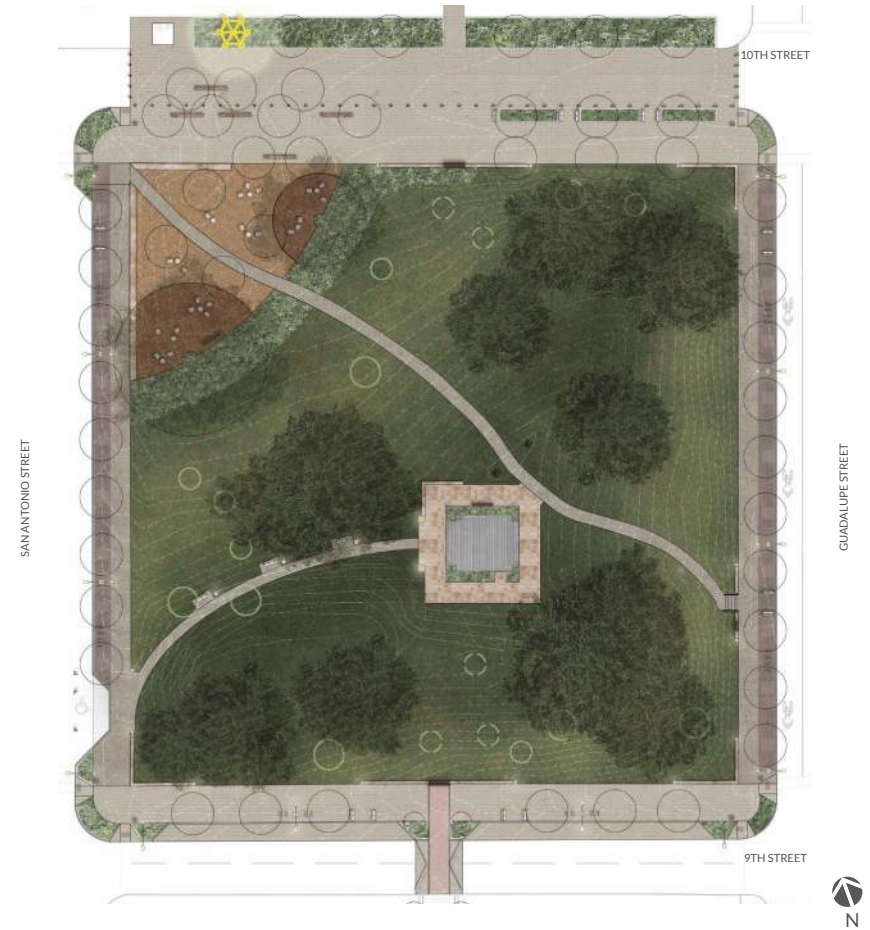
COMMUNITY SPACE
A gravel plaza, terrace, shade trees, and new native planting

HISTORIC Bandstand
A 5-foot concrete walk with illuminated pedestal lights

9TH STREET
18-foot walks with Great Streets improvements

INTERPRETIVE SIGNAGE
LIGHTING

Concept B



10TH STREET
A civic event plaza closed to vehicular traffic

COMMUNITY SPACE
A gravel plaza and tree decks to protect existing critical root zones

HISTORIC Bandstand
A 10-foot cut stone walk with planting and illuminated pedestal lights

9TH STREET
18-foot walks with Great Streets improvements and porous paving

INTERPRETIVE SIGNAGE
LIGHTING

BREAKOUT