



## Interactive 2018 Zilker Park Area Schedules

**(Click on the DATE RANGE to view the appropriate map)**

*This document is provided to assist in planning a visit to the park. It will help indicate parking availability, show planned road or lane closures, and help guide you in making choices relative to your visit.*

### Austin City Limits Music Festival

<a href="#"><u>September 24 – 30</u></a>	<a href="#"><u>Load In Period</u></a>
<a href="#"><u>October 1-4</u></a>	<a href="#"><u>Load In Period</u></a>
<a href="#"><u>October 5-7</u></a>	<a href="#"><u>EVENT DAYS</u></a>
<a href="#"><u>October 8-11</u></a>	<a href="#"><u>Between Event Weekends</u></a>
<a href="#"><u>October 12-14</u></a>	<a href="#"><u>EVENT DAYS</u></a>
<a href="#"><u>October 15-19</u></a>	<a href="#"><u>Load Out Period</u></a>

### Maintenance Week and Transition Period

<a href="#"><u>October 20-26</u></a>	<a href="#"><u>Park Maintenance</u></a>
<a href="#"><u>October 27 – 31</u></a>	<a href="#"><u>Transition Period</u></a>

## 2018 Zilker Park Area OPEN Area Schedule at a Glance

All subject to weather conditions during the subject time period.

ACL Music Festival (Festival Days Oct 5-7, and 12-14)

Time Period  
September 24-30

[Main Menu](#)

**Closed Areas Shown in Red**

**Areas Open:** Picnic Areas,  
Rugby Field, Polo Field,  
Playscape, Greenbelt

**Facilities Open:** McBeth, Zilker  
Botanical Garden, Austin  
Nature and Science Center,  
Barton Springs Pool

**Park Access:** Utilize the south  
side main park entrances and  
parking areas.

**Road Closures Information:**

[www.austintexas.gov/ace](http://www.austintexas.gov/ace)

**see red line**

**Expect higher pedestrian/  
vehicular traffic in area.**



### Stratford Closures

Sept 25, 26, 27 7 am – 10 pm

### Stratford Flagging

#### Assisted Traffic Movements

Sept 24, 28, 8 am – 6 pm

### Barton Springs Road – Closure

Sept 29 3 am – 7 am

### Barton Springs – 1 Lane Closure

Sept 29 7 am – 6 pm eastbound  
7 am – 7 pm westbound



## 2018 Zilker Park Area OPEN Area Schedule at a Glance

All subject to weather conditions during the subject time period.

ACL Music Festival (Festival Days Oct 5-7, and 12-14)

Time Period

October 1-4

[Main Menu](#)

**Closed Areas Shown in Red**

**Areas Open:** Picnic Areas,  
Rugby Field, Polo Field,  
Playscape, Greenbelt

**Facilities Open:** McBeth,  
Zilker Botanical Garden,  
Austin Nature and Science  
Center, Barton Springs Pool

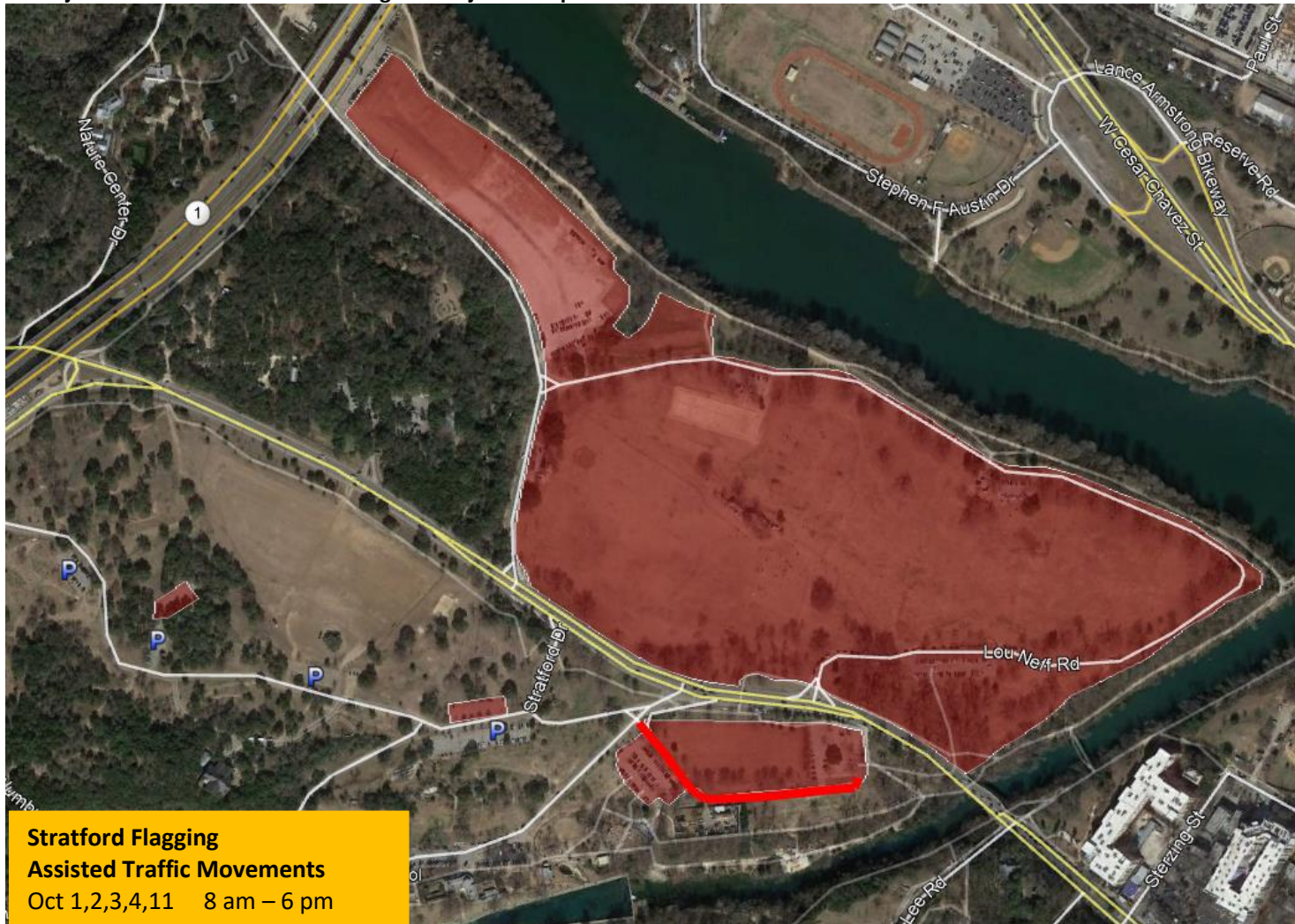
**Park Access:** Utilize the  
south side main park  
entrances and parking areas.

**Road Closures Information:**

[www.austintexas.gov/ace](http://www.austintexas.gov/ace)

**see red line**

**Expect higher pedestrian/  
vehicular traffic in area.**



**Stratford Flagging**  
**Assisted Traffic Movements**  
Oct 1,2,3,4,11 8 am – 6 pm

**Barton Springs – 1 Lane Closure**  
Oct 3, 4 9 am – 3 pm westbound



## 2018 Zilker Park Area OPEN Area Schedule at a Glance

All subject to weather conditions during the subject time period.

ACL Music Festival (Festival Days Oct 5-7, and 12-14)

Time Period

Event Days

Oct. 5-7, & 12-14

[Main Menu](#)

**Closed Areas Shown in Red**

### Areas Open:

(walk or bike-in access only)  
Polo Field, Playscape,  
Greenbelt

### Facilities Open:

Barton Springs Pool  
(access via South Lamar –  
see map [website](#))

### Park Access (Pool only):

Pool parking at south gate  
lot via Lamar. ADA access  
via Mopac, or new south  
gate lot.

### Road Closures Information:

[www.austintexas.gov/ace](http://www.austintexas.gov/ace)

**see red line**

**Expect higher pedestrian/  
vehicular traffic in area.**



### Stratford Closures

Oct 5-7, 12-14 event days

### Barton Springs Road – Closure

Oct 5-7, 12-14 event days



## 2018 Zilker Park Area OPEN Area Schedule at a Glance

All subject to weather conditions during the subject time period.

ACL Music Festival (Festival Days Oct 5-7, and 12-14)

Time Period

Oct 8-11

October 15-19

[Main Menu](#)

**Closed Areas Shown in Red**

### Areas Open:

(walk or bike-in access only)  
Polo Field, Playscape,  
Greenbelt

### Facilities Open:

Barton Springs Pool  
(access via South Lamar – see  
map [website](#))

### Park Access:

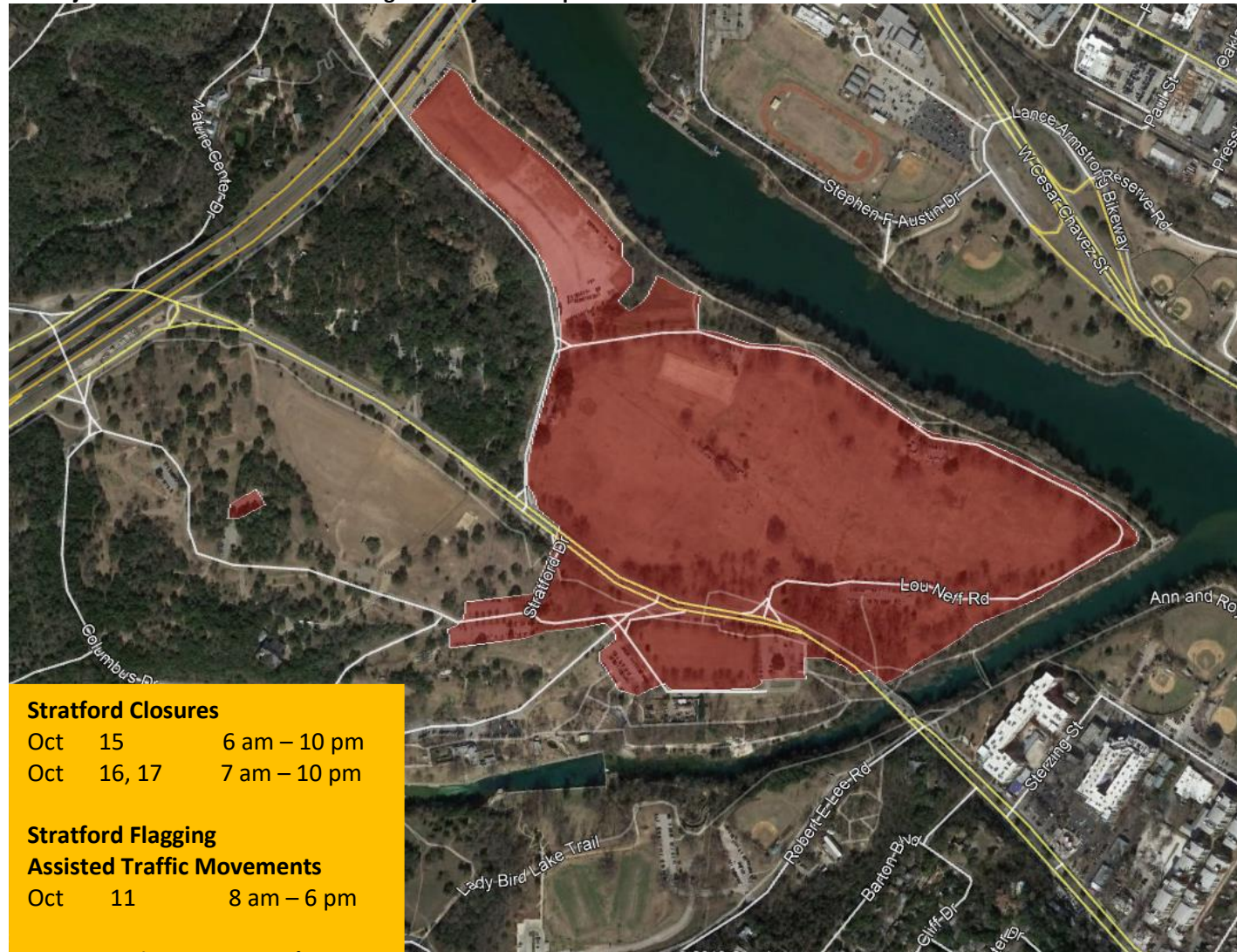
Pool parking at south gate lot  
via Lamar. ADA access via  
Mopac, or new south gate lot.

### Road Closures Information:

[www.austintexas.gov/ace](http://www.austintexas.gov/ace)

**see red line**

**Expect higher pedestrian/  
vehicular traffic in area.**



### Stratford Closures

Oct	15	6 am – 10 pm
Oct	16, 17	7 am – 10 pm

### Stratford Flagging

#### Assisted Traffic Movements

Oct	11	8 am – 6 pm
-----	----	-------------

### Barton Springs – 1 Lane Closure

Oct 11	10 am – 3 pm westbound
Oct 15	10 am – 2 pm eastbound
	10 am – 3 pm westbound
Oct 16	10 am – 2 pm eastbound



## 2018 Zilker Park Area OPEN Area Schedule at a Glance

All subject to weather conditions during the subject time period.

ACL Music Festival (Festival Days Oct 5-7, and 12-14)

Time Period  
October 20-26  
October 27-31

[Main Menu](#)

**Closed Areas Shown in Red**

### Areas Open:

Picnic Areas, Rugby Field, Polo Field, Playscape, Greenbelt, Stratford Field

### Facilities Open:

McBeth, Zilker Botanical Garden, Austin Nature and Science Center, Barton Springs Pool

**Park Access:** Utilize the south side main park entrances and parking areas.

**Fall and post event turf maintenance occurs weather permitting.**

**Expect higher pedestrian/vehicular traffic in area.**

