



## Emma Long Metropolitan Park - Camping Guidebook

1600 City Park Road, Austin, Texas 78730



### GUIDBOOK MENU

[Booking](#)

[Check In/Out](#)

[Cancellation](#)

[Campsites](#)

- [Bluff Sites \(tent camping\)](#)
- [Grove Sites](#)
- [Utility Sites](#)

[Utility Site Comparison Table](#)

[Map & Driving Directions Link](#)

[Online Resources](#)

[Park Campsite Map Overview](#)

[Park Rules Overview](#)

[Park Wide Amenities](#)

### ONLINE RESOURCES

**Read up!**

[Emma Long Park Website](#)

**Find us!**

[Google Driving directions](#)

**See us!**

[Photo gallery of the park](#)

[Google Map of park sites, features, and campsites \(with images\)](#)

**Book us!**

[Online calendar availability! Select "campsites".](#)



## Booking, Check In/Out, Cancellations

**Campsite Booking:** Book a site online up to 6 months before intended arrival time based upon availability. All bookings are first-come first-served. Please be aware that during peak season, “drive up” booking at the park may be affected by online reservations.

- Campsites may be booked up to 14 consecutive nights in any 30-day period.
- Campers must leave the park for at least 1 night after 14 consecutive nights
- Extend a reservation through the [online portal](http://www.austintexas.gov/parksonline) - [www.austintexas.gov/parksonline](http://www.austintexas.gov/parksonline).
- Reservations for more than 2 sites per household/account/day must email for assistance.
- A person under 18 years of age in a park between 10 p.m. and 5 a.m. must be accompanied or supervised by an adult. The ratio of adults to minors shall not be less than one adult for every eight minors.

**On Site Staff Hours:** Staff are available at park from 8 am to 4 pm daily.

**Check-In:** 3 pm for all sites.

**Check-Out:** Check out time is 10 am.

NO check-out extensions are granted.

<b>NOTICE – TOW AWAY</b>	Vehicles/campers occupying sites beyond check out time, or sites rented by other users are subject to immediate towing at the owner’s expense.
------------------------------	--

**Payments:** Payment is due at the time the reservation is made and is paid [online](#).

### Cancellations or Transfers:

- **14 days or more** – full refund of fees.      **Less than 14 days** – 50% refund of fees.
- **No Show/Less than 24-hour notice (3 pm day before)** - NO refund.
- **CANCELLATION EMAIL:** send requests to [reservations@austintexas.gov](mailto:reservations@austintexas.gov)
- A reservation can be transferred to a future date with a 14-day notice. Send requests to [reservations@austintexas.gov](mailto:reservations@austintexas.gov).

### Park Entry Fee per Day:

- A park entrance fee for 1 vehicle is INCLUDED at the time of reservation per day per car.
- Campers pay fees for additional vehicles/motorcycles at the pay station at check-in. **Pay at the automated pay stations** - ONLY credit cards are accepted.
- Day visitors pay fees for local or visiting guest vehicles
  - November – February: pay by card at the kiosk upon arrival
  - March – October: MUST be done [online](#) in advance by each visitor. See the park reservation website “browse tickets” section. Passes do sell out. Sales start 14 days prior.
- **FEE:** \$5 per day, Monday through Thursday. \$10 per day Friday through Sunday, & Holidays



## Park Rules and Laws

- **Quiet time** is: 10 pm – 8 am.
  - All radios and generators must be turned **OFF** during this time.
  - **NO MUSIC MAY BE PLAYED FROM CARS/TRUCKS PARKED ON SITE.**
  - As a courtesy to all campers, **vehicles should be in the park by 9:30 pm.**
- **Pets** must remain on leash under the control of the owner at all times.
- **Styrofoam** is prohibited. **Glass containers** are prohibited by law.
- Collection of firewood at the park is prohibited.
- All camping items must remain within the reserved area in an orderly and sanitary condition.
- Rules and restrictions regarding firearms may be found in the park rules.
- **Minors:** A person under 18 years of age in the park between the hours of 10 p.m. and 5 a.m. must be accompanied or supervised by an adult. The ratio of adults to minors shall not be less than 1 adult for every 8 minors.
- **Waterslides or temporary wading pools are NOT allowed in the parks..**
- **Park Wide Rules:** [www.austintexas.gov/parks](http://www.austintexas.gov/parks)

### Common City of Austin Laws:

- **Alcohol** may be consumed directly at an approved (paid) campsite reservation. Alcohol is not permitted in other park locations. Sales are NOT allowed.
- **Glass containers** are prohibited in the entire park system.
- **Smoking** and vaping is prohibited in all park areas. Violations are a Class C Misdemeanor.
- Amplified music/sounds/dj's and/or bands all require a sound permit, and are ONLY issued for the picnic table areas with a reservation.
- **Watercraft and amplified sound:** A person may not operate sound equipment in a watercraft audible or causing a vibration 100 feet from the equipment.
- **Conduct:** If a person's conduct violates park rules, or is unlawful, disruptive, destructive, or hazardous, the person may be warned and asked to stop the conduct immediately by any park employee. If a person persists in the conduct after a warning, a park employee may eject the person from the park. If a person's conduct is criminal, poses an imminent threat of injury or property damage, or prevents the public enjoyment of the premises, a park employee may eject the person from the park.
- **8-5-81 - WATERCRAFT AND OTHER MOTORIZED CRAFT ON LAKE AUSTIN.** (A) A person may not use or possess a jet ski, wet bike, motorized surfboard, or similar device on Lake Austin: (1) from sunset on the Friday before Memorial Day until sunrise on the Tuesday after Memorial Day; (2) from sunset on the Friday before Labor Day until sunrise on the Tuesday after Labor Day; or (3) from sunset on July 3 until sunrise on July 5.

**For Emergencies or Illegal Activity please dial 911,  
After hour non-emergency please Dial 311.**

## Park Amenities and Accessibility



Emma Long Metropolitan Park has a **sanitary sewer pump out** station located inside the park, along the main entry road near the main restroom complex. GRAY WATER AND BLACK WATER MUST BE DISCHARGED ONLY AT DUMP STATION



**2 restroom complexes** on site with hot/cold water. There are additional portable units throughout the park. The main restroom complex and showers are ADA accessible.



**1 shower complex** located in the central restroom complex on site with hot and cold water. There are 2 women's shower stalls, and 2 men's shower stalls in the main complex.



**2 sand volleyball courts** with nets are available for first-come first-served use. BRING YOUR OWN VOLLEYBALL.



**Swimming** is allowed in the marked swimming area only and is at your own risk. There is no lifeguard on duty.



**Boats/watercraft** may NOT beach/anchor on the shoreline, or tie off to any trees, or in any of the areas along the camping grounds. This creates erosion issues along the shoreline and harms beneficial plants. By law, a person may not operate sound equipment in a watercraft audible or causing a vibration 100 feet from the equipment.





- Grove Campsites 5, 6, 10, 15, and 19 are ADA accessible via a sidewalk to the tent pad area at the site.
- The west (upstream) pier is ADA accessible via the sidewalk from the main restroom complex.
- The main restroom complex is ADA accessible, and the showers are roll-in accessible.



There is **NO Wi-Fi** at this park location.

## The Bluff-30 primitive (tent) sites-\$10 per site

<b>Tents</b>  2 or less tents	<b>RV's</b> 	<b>Group Size</b> 8 or less people	<b>Vehicles at Site</b> 2
--	--	--	------------------------------

A park entrance fee for 1 vehicle is charged per day with the reservation.

### Site Information:



- **Picnic table(s):** At all sites except Bluff 30 Site.
- **Grill:** See chart below. Bring your own fire wood/charcoal.
- **Electrical:** No electricity is available at these sites.
- **Water:** 1 standard hose bib connection available for communal/shared use every 2-3 sites.
  - Backflow preventers are NOT provided at hose bib connections.
  - Campers may NOT exclusively use or block a communal water connection.

**Waterslides or temporary wading pools are NOT allowed in the parks.**

Campsite Number	Box Grill	Fire Ring	Picnic Table		Campsite Number	Box Grill	Fire Ring	Picnic Table
B1	Y	Y	Y		B16	Y	Y	Y
B2	Y	N	Y		B17	Y	Y	Y
B3	Y	Y	Y		B18	Y	Y	Y
B4	Y	Y	Y		B19	Y	N	Y
B5	Y	Y	Y		B20	Y	Y	Y
B6	Y	Y	Y		B21	Y	Y	Y
B7	Y	N	Y		B22	Y	Y	Y
B8	Y	Y	Y		B23	Y	Y	Y
B9	Y	Y	Y		B24	Y	Y	Y
B10	Y	Y	Y		B25	Y	Y	Y
B11	Y	Y	Y		B26	Y	N	Y
B12	Y	Y	Y		B27	Y	Y	Y
B13	Y	Y	Y		B28	Y	Y	Y
B14	Y	Y	Y		B29	Y	Y	Y
B15	Y	Y	Y					

\*Water is communal along the Bluff sites and is located every 2-3 sites. No camper may solely use or block use of the communal water connections.

## The Grove Walk-In Sites - 26 sites-\$10 per site

<b>Tents</b>  2 or less tents/site	<b>RV's</b> 	<b>Group Size</b> 6 or less people/site	<b>Vehicles at Site</b> 0
---	--	---	------------------------------

A park entrance fee for 1 vehicle is charged per day with the reservation. All cars must park in general parking spots at the park. **There is no at-site parking at any grove camping site.**

### Site Information:

- **Camping Pad:** 16'x16' granite camping pad, except sites 1-4, and 24-26
- **Picnic table(s):** At all sites except 4.
- **Grill:** See chart below. Bring your own firewood/charcoal.
- **Electrical:** No electricity is available at these sites.
- **Water:** No water is available at these sites.

**Waterslides or temporary wading pools are NOT allowed in the parks.**



Site Number	Granite Pad 16'x16'	Box Grill	Fire Ring with cooking grate	Picnic Table(s)	Site Number	Granite Pad 16'x16'	Box Grill	Fire Ring with cooking grate	Picnic Table(s)
G1	N	Y	Y	Y	G14	Y	N	Y	Y
G2	N	Y	Y	Y	G15-ADA	Y	N	Y	Y
G3	N	Y	N	Y	G16	Y	N	Y	Y
G4	N	Y	N	N	G17	Y	Y	Y	Y
G5 - ADA	Y	N	Y	Y	G18	Y	N	Y	Y
G6 - ADA	Y	Y	Y	Y	G19-ADA	Y	N	Y	Y
G7	Y	Y	N	Y	G20	Y	N	Y	Y
G8	Y	Y	Y	Y	G21	Y	N	Y	Y
G9	Y	N	Y	Y	G22	Y	N	Y	Y
G10 - ADA	Y	N	Y	Y	G23	Y	N	Y	Y
G11	Y	N	Y	Y	G24	N	Y	Y	Y
G12	Y	N	Y	Y	G25	N	Y	Y	Y
G13	Y	N	Y	Y	G26	N	Y	Y	Y



## Utility Sites- 20 sites

**\$20 non-waterfront/\$25 waterfront per site**

**ONLY Sites 2, 4 and 7 are eligible for tent camping. All other sites require an RV.**

Tent Only Use	RV's	Group Size	Vehicles at Site
 ONLY at site 2, 4, 7 Limit 4 tents <i>All other sites REQUIRE an RV/Camper.</i>	 Limit 1 RV and 2 tents	8 or less people	2

A park entrance fee for 1 vehicle is charged per day with the reservation.

### Site Information:

- [Utility Site Photo Gallery](#)
- **Improved pad:** 32' deep x 26' wide. All sites are back-in only.  
Maximum RV/trailer length - 32 feet (bumper to bumper/hitch)
- **Picnic table(s):** A table is at all sites. Site 3 and 19 have 3 picnic tables.
- **Grill:** A box grill is at all sites. Bring your own firewood/charcoal.
- **Electrical at All Sites:** 50 Amp 4-prong grounded, 30 Amp 3-prong grounded, and a 20 Amp duplex outlet (2 Edison outlets)
- **Water:** At all sites. 1 potable water spigot (faucet) per site, back of pad.
  - Backflow preventers are NOT provided.

**Waterslides or temporary wading pools are NOT allowed in the parks.**

Side by side comparison table located on the next page.



## Utility Campsites Side by Side Comparison Table

Campsite Number	Camping Device Type Allowed	Box Grill	Fire Ring	Picnic Table (s)	Water Back of Pad	Electrical Right or Left Side of Pad (facing pad from street)
U1	RV only	Y	Y	1	Y	Right
U2	RV or tent	Y	Y	1	Y	Right
U3	RV only	Y	Y	3	Y	Left
U4	RV or tent	Y	Y	1	Y	Right
U5	RV only	Y	Y	1	Y	Left
U6	RV only	Y	Y	1	Y	Right
U7	RV or tent	Y	Y	1	Y	Right
U8	RV only	Y	Y	1	Y	Left
U9	RV only	Y	Y	1	Y	Left
U10	RV only	Y	Y	1	Y	Left
U11	RV only	Y	Y	1	Y	Right
U12	RV only	Y	Y	1	Y	Right
U13	RV only	Y	Y	1	Y	Right
U14	RV only	Y	Y	1	Y	Right
U15	RV only	Y	Y	1	Y	Right
U16	RV only	Y	Y	1	Y	Left
U17	RV only	Y	Y	1	Y	Right
U18	RV only	Y	Y	1	Y	Right
U19	RV only	Y	Y	3	Y	Right
U20	RV only	Y	Y	1	Y	Right



## Park Overview Map

### Interactive Campsite Amenity and Picnic Site Map - Google Map

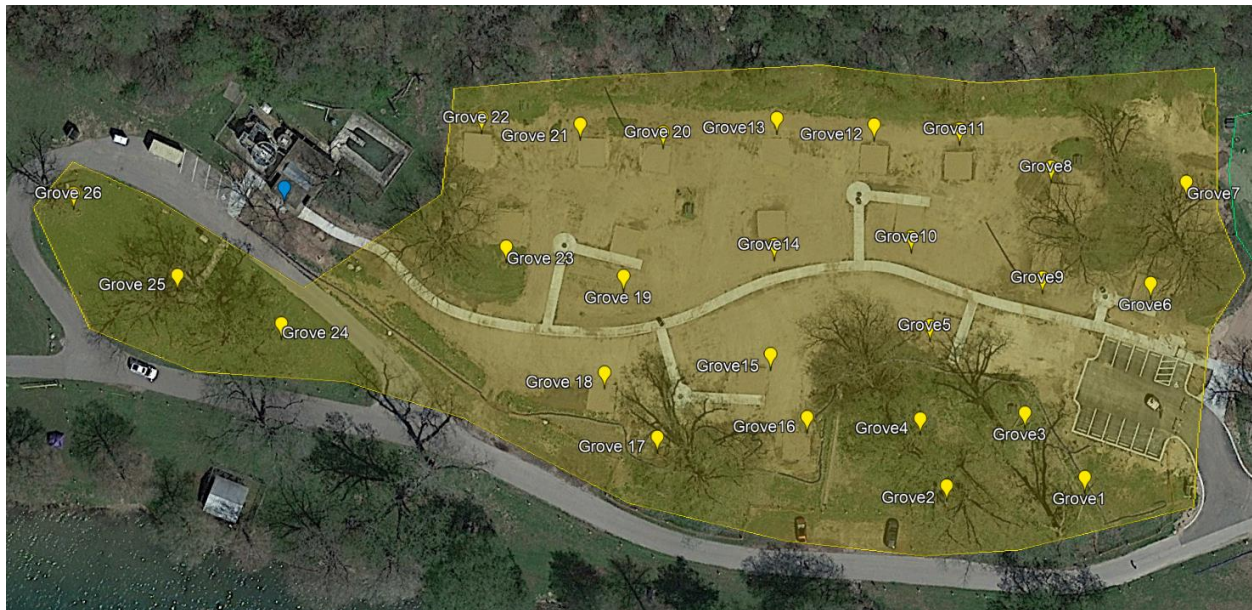


### RV/Utility Sites





## Grove Tent Sites



## Bluff North Tent Sites



## Bluff South Tent Sites



## Emma Long Metropolitan Park – Driving Directions

1600 City Park Road, Austin, Texas 78730

[Google Driving directions to the park](#)

