



Interactive 2016 Zilker Park Area Schedules **(Click on the DATE RANGE to view the appropriate map)**

Austin City Limits Festival

[September 19 – 29](#) - load in period

[September 30 – October 2 Event Days](#)

[October 3 - 6](#) - in-between period

[October 7 - 9 Event Days](#)

[October 10 – 14](#) - load out period

[October 15 – 21](#) - park maintenance

Transition Period

[October 22 – 30](#)

Trail of Lights

[October 31 – November 16](#) – load in period

[November 17 – December 23](#) – load in (cont.) and event period

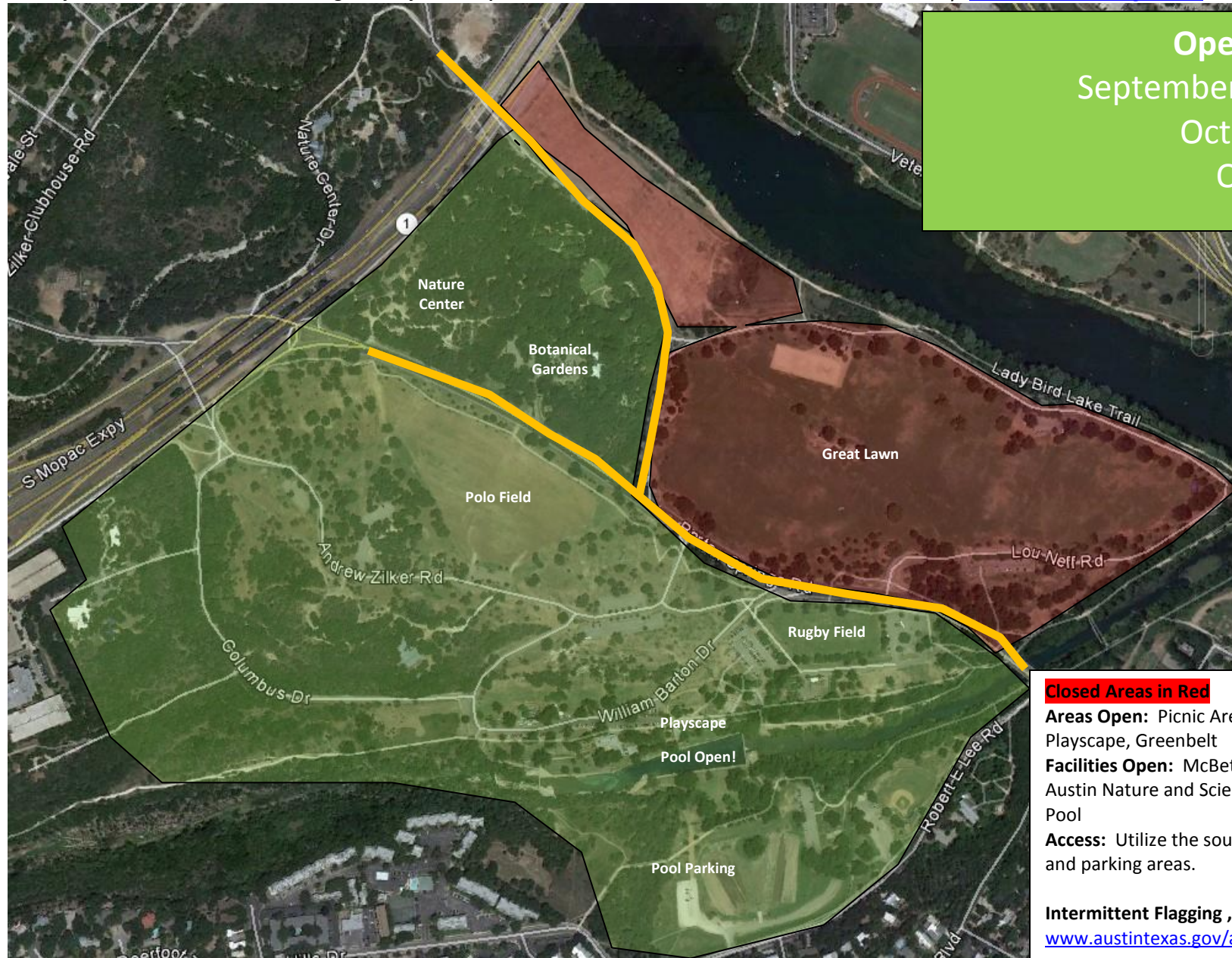
(Event Days December 3 (fun run),
and 10-23 are within this period.)

2016 Zilker Park Area OPEN Area Schedule at a Glance

All subject to weather conditions during the subject time period.

ACL Music Festival (Festival Days Sept 30 – Oct 2, and 7-9)

Road closures vary. www.austintexas.gov/ace for detailed information.



Open Areas (green)
September 19 – 29, and
October 3-6, and
October 10-14

Closed Areas in Red
Areas Open: Picnic Areas, Rugby Field, Polo Field, Playscape, Greenbelt
Facilities Open: McBeth, Zilker Botanical Garden, Austin Nature and Science Center, Barton Springs Pool
Access: Utilize the south side main park entrances and parking areas.

Intermittent Flagging , Lane/Road Closures:
www.austintexas.gov/ace **see orange lines**

Expect higher pedestrian/vehicular traffic in area.

2016 Zilker Park Area OPEN Area Schedule at a Glance

All subject to weather conditions during the subject time period.

ACL Music Festival (Festival Days Sept 30 – Oct 2, and 7-9)

Road closures vary. www.austintexas.gov/ace for detailed information.



Open Areas (green)
Event Days
Sept 30 – Oct 2, &
Oct 7-9

Closed Areas in Red

Areas Open: Polo Field, Playscape, Greenbelt (walk-in access only)
Facilities Open: Barton Springs Pool (drive in via Lamar)
Access: Pool general parking at south gate lot via Lamar. ADA access via Mopac, or new south gate lot.

Full Road Closures Barton Springs and Stratford:
www.austintexas.gov/ace see red line

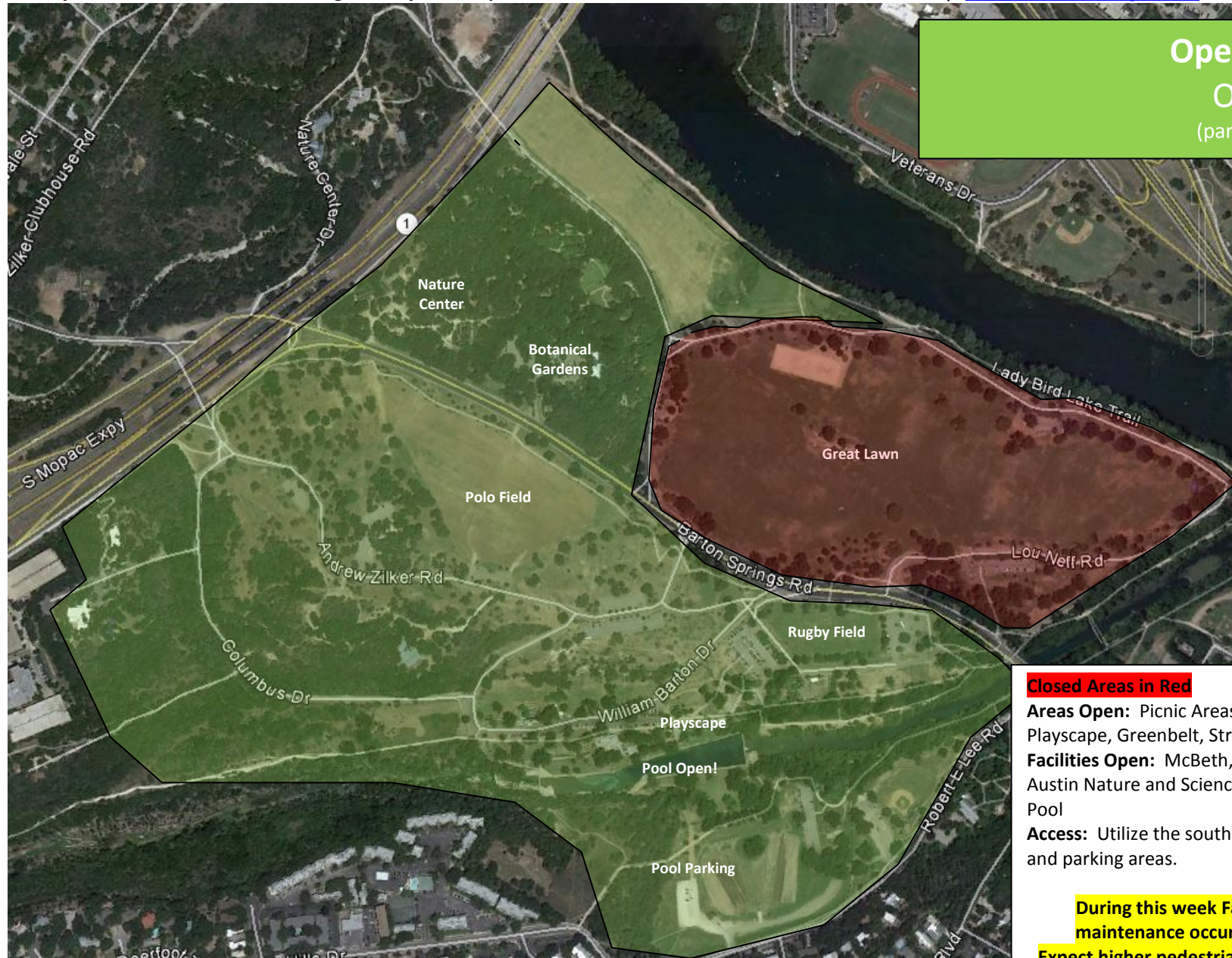
Expect higher pedestrian/vehicular traffic in area.

2016 Zilker Park Area OPEN Area Schedule at a Glance

All subject to weather conditions during the subject time period.

ACL Music Festival (Festival Days Sept 30 – Oct 2, and 7-9)

Road closures vary. www.austintexas.gov/ace for detailed information.



Open Areas (green)

October 15-21

(park maintenance week)

Closed Areas in Red

Areas Open: Picnic Areas, Rugby Field, Polo Field, Playscape, Greenbelt, Stratford Field

Facilities Open: McBeth, Zilker Botanical Garden, Austin Nature and Science Center, Barton Springs Pool

Access: Utilize the south side main park entrances and parking areas.

During this week Fall and post event turf maintenance occurs weather permitting.

Expect higher pedestrian/vehicular traffic in area.

2016 Zilker Park Area OPEN Area Schedule at a Glance

All subject to weather conditions during the subject time period.

Trail of Lights Festival (Event Nights Dec 3, and 10-23)

Road closures vary. www.austintexas.gov/ace for detailed information.



Open Areas (green)
October 22 – 30
(open period)

Transitional Feneline in Red
Areas Open: Great Lawn, Picnic Areas, Rugby Field, Polo Field, Playscape, Greenbelt, Stratford Field
Facilities Open: McBeth, Zilker Botanical Garden, Austin Nature and Science Center, Barton Springs Pool
Access: Utilize all north and south side main park entrances and parking areas, including Lou Neff.

2016 Zilker Park Area OPEN Area Schedule at a Glance

All subject to weather conditions during the subject time period.

Trail of Lights Festival (Event Nights Dec 3, and 10-23)

Roads closures vary. www.austintexas.gov/ace for detailed information.



2016 Zilker Park Area OPEN Area Schedule at a Glance

All subject to weather conditions during the subject time period.

Trail of Lights Festival (Event Nights Dec 3, and 10-23)

Roads closures vary. www.austintexas.gov/ace for detailed information.

