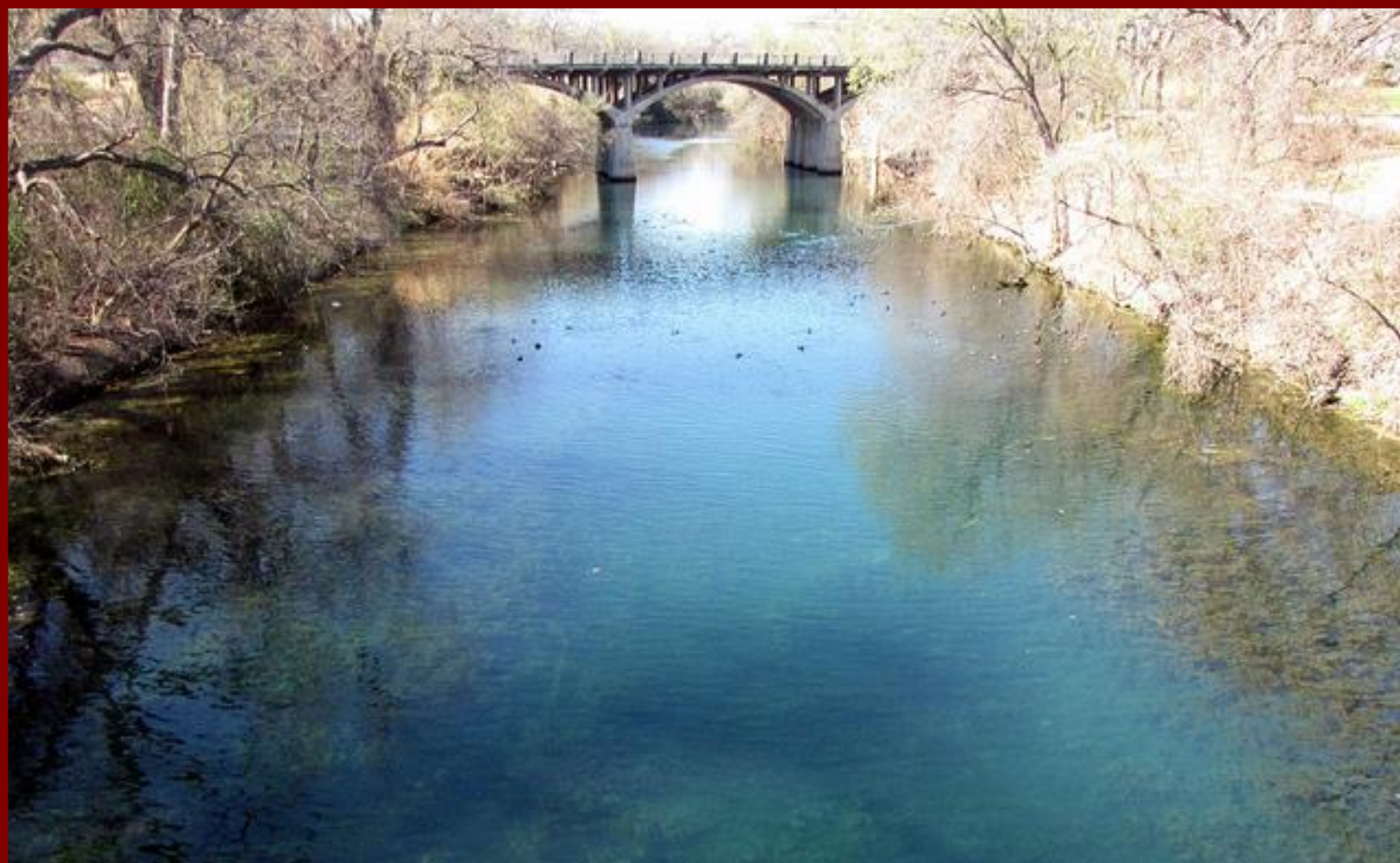


City of Austin

# SPECIAL OPERATIONS PLAN



## Waterway Restriction Guide

Revised June 2014



Office of Homeland  
Security and Emergency  
Management





City of Austin

Special Operations Plan

# Waterway Restriction Guide

Revised June 2014

Approved by:

A handwritten signature in blue ink, reading "Otis J. Latin, Sr.".

Otis J. Latin, Sr.  
Director

Homeland Security and Emergency Management

This Page Intentionally Left Blank

## RECORD OF CHANGES

[illegible]

## TABLE OF CONTENTS

Record of Changes .....	3
1. Overview of Plan .....	5
2. Waterway Restriction Action Guide .....	7
Closing Waterways .....	7
Monitoring and Reopening Waterways .....	8
3. Barton Creek .....	11
Special Notes .....	11
4. Other Creeks .....	12
5. Timing of Restrictions .....	13
6. Notification .....	14
7. Facilities Along Area Waterways .....	15
8. Mansfield Dam and Downstream Floodgate Operations .....	18
Overview .....	18
9. Sample Waterway Restriction Orders .....	19
Creeks Only .....	19
4 Gates and All Creeks .....	20
4 Gates .....	21
3 Gates .....	22
2 Gates .....	23
Large Watercraft Authorized .....	24
Tom Miller (Only) .....	25
Appendix 1: City of Austin Code .....	26
Appendix 2: Maps of the Colorado River and Barton Creek .....	28

## 1. OVERVIEW OF PLAN

The City of Austin is located along the Texas Colorado River. The Lower Colorado River Authority (LCRA) operates various flood control dams long the river. LCRA, under rules set by the U.S. Corps of Engineers, regulates the water flow through the various dams by the use of floodgates.

During heavy rain periods in the Austin area or upstream from Austin, the LCRA may open floodgates on Mansfield Dam and Tom Miller Dam. Similarly, the City of Austin operates the floodgates on Longhorn Dam.

Open floodgates cause water levels to rise and currents to increase on Lake Austin and on Lady Bird Lake, as well as on the portion of the Colorado River below Longhorn Dam.

These increased water levels and rapid currents can endanger the safety of persons and their property along the waterway as well as those who use the waterway for commercial or recreational purposes.

Additionally, local creek and stream flooding can quickly create dangerous conditions along these waterways.

Other factors such as debris and the effect of hydrilla and other vegetation on the waterway can create additional hazards.

Under Sections 8-5-21 and 8-5-22 of the City of Austin Code, the Fire Chief may restrict use of waterways within the City limits.

The goal of this document is to establish guidelines that can be used by the Fire Chief and the other involved Departments in determining what restrictions are needed on the various waterways. These restrictions are designed to:

- Protect the public from unsafe conditions on and along waterways.
- Protect public and private property on and along the waterways.
- Minimize waterway rescues and maintain available emergency resources during flood events.

This document is only a guideline. Each flooding incident must be evaluated on its own merits and appropriate orders must be issued.

This document has been jointly developed by the following Departments:

The City of Austin Fire Department  
The City of Austin Parks and Recreation Department  
The City of Austin Police Department- Parks Division  
The City of Austin Watershed Protection Department  
The City of Austin Office of Homeland Security and Emergency Management

This plan has also been coordinated with the Lower Colorado River Authority Office Emergency Management.

Following a major rain or flooding event, the City of Austin, Office of Homeland Security and Emergency Management (HSEM) will convene a Situation Assessment Team of personnel from the above departments to review waterway issues and make waterway restriction recommendations to the City of Austin Fire Chief. The Chief, or his/her designee, will issue all Waterway Restriction Orders.

## 2. WATERWAY RESTRICTION ACTION GUIDE

### CLOSING WATERWAYS

Havey rainfall occurs, impacting any of the below.

- Local streams and creeks
- The Texas Colorado River

HSEM works with the Situation Assessment Team to assess the event and recommends actions needed to be taken by the Fire Chief. This may include immediate closure of any or all of the below:

- Lake Austin
- Lady Bird Lake
- Colorado River below Longhorn Dam
- (All) Streams and Creeks

Typically this ban expires at 4PM the day following the event if storms are expected to subside, allowing for a detailed “eyes-on” assessment. In other situations, the ban may expire at 8 PM or another selected date/time.

As soon as practical and safe to do so (typically the morning after the event), the Situation Assessment Team reviews information from:

- Rain, stream levels, water flow, and FEWS data
- Eyes-on assessment from APD and PARD personnel. Including debris, water flow rates, waterway levels, and potential shoreline/property damage
- LCRA flood gate opening, projected gate openings, and other data
- Weather forecasts

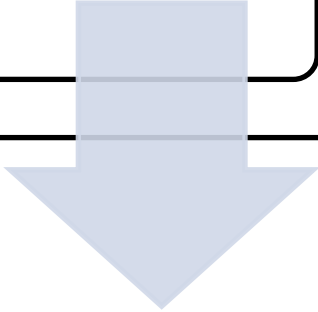
The Fire Chief reviews the Assessment Team’s recommendation and issues appropriate ban(s).

- Bans may not extend past the 5<sup>th</sup> day after being posted. (They can be reissued).
- Bans must be posted at City Hall and meet other conditions (see guide).
- Bans typically end at Noon on the designated day. This allows the Situation Assessment Team to review data in the morning and make recommendations prior to ban expiration.

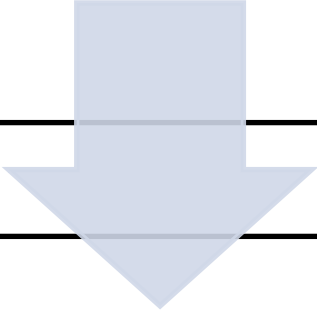


## MONITORING AND REOPENING WATERWAYS

The Situation Assessment Team will continue to monitor waterway conditions and make further recommendations to the Fire Chief.



Considerations in reopening include, but are not limited to:

- Height of water in waterway and potential damage to banks, public and private property.(Particularly upper Lake Austin)
  - Debris in the waterway that may create a safety hazard to boaters
  - Waterway flow rates that may cause a dangerous situation if a watercraft loses power or may overpower non-motorized watercraft such as canoes and paddleboats on Lady Bird Lake
  - Flood gate operations that may create danger above and/or below Tom Miller or Longhorn Dam
  - Note: After Lake Austin stabilizes, some consideration may be given to allowing commercial boating activity between the Loop 360 Bridge and Walsh Landing. No activity should be allowed near dams during gate operations
- 

The Fire Chief reviews the recommendation of the Situation Assessment Team and:

- Reissues ban(s)
- Modifies and reissues ban(s)
- Allows ban(s) to expire
- Cancels ban(s)

EFFECT OF MANSFIELD GATE OPERATIONS							
FEATURE (Mapsco Page)	GENERATION	1 GATE	2 GATES	3 GATES	4 GATES	5 GATES OR MORE	NOTES
Water flow added	7,500 cfs	5,700 cfs	5,700 cfs	5,700 cfs	5,700 cfs	5,700 each	
Total water flow from Mansfield	7,500 cfs	13,200 cfs	18,900 cfs	24,600 cfs	30,300 cfs	36,000 cfs +	
Mansfield Dam (491E)							
Low Water Crossing Bridge (491E)				Bridge Floods (Close)??			
Docks Along Waterway (491, 521, 520)			Docks 3'- 4' underwater		Docks Completely Underwater		
Homes and Spa on N. Side (550 C & D)				Water near or in Homes - w\Hydrilla	Water in homes		
Tom Miller Dam (584A)							Any gate operations may cause safety concerns for boaters near face of dam. Waterflow/ Gates may reflect additional flow from Austin Creeks.
Park at Red Bud Island (584A)			Close				
Red Bud Trail (584A)						Roadway overtops	
Ceaser Chavez Under Lamar (584Z)				Water over Road (Check ASAP and Close lane or Road)	Water over Road	Water over Road	
South bank past Congress (615)						Est. 9 Gates. Water in buildings (not confirmed)	
Longhorn Dam (615H)						>45,000 cfs total, Dam Overtops	

<b>TYPICAL WATERWAY CLOSURES BASED ON MANDSFIELD DAM GATES</b>							<b>TYPICAL WATERWAY CLOSURES BASED ON TOM MILLER DAM GATES</b>
<b>TYPICAL CLOSURE INFORMATION</b>	<b>GENERATION</b>	<b>1 GATE AT MANSFIELD</b>	<b>2 GATES AT MANSFIELD</b>	<b>3 GATES AT MANSFIELD</b>	<b>4 GATES AT MANSFIELD</b>	<b>5 OR MORE GATES AT MANSFIELD</b>	<b>ANY GATE OPERATION (PARTIAL OR FULL)</b>
Typical Effect	Increased Water Levels Near Mansfield Dam	Dock and Shoreline effected from Mansfield to MM 14	Docks Flooded and potential Wake problems to property from Mansfield to Emma Long Park (MM 4.5)	Low Water Crossing Bridge Closed. Water over docks and near homes from Mansfield to MM 14	Water in homes near MM 15. Upstream Docks completely covered.		Increased current on Lake Austin near upper face of Dam
Required Closure (Per City Code 8-5-22 A)	None	None	None	-Close L.A Between Mansfield and Loop 360	-Close L.A.	-Close L.A.	None
Typical Closure ordered by Fire Chief	None	Close: -L.A. From Walsh Landing to Tom Miller -T.L From Tom Miller to Red Bud Trail. Consider Closure: -L.A. From Mansfield to Commons Ford depending on Hydrilla - All of T.L. depending on flow from creeks, etc. -* See Note	Close: -L.A. From Mansfield to Commons Ford. - L.A. From Walsh Landing (include Walsh Landing) to Tom Miller. - All of Lady Bird Lake. - Colorado River Below Longhorn Dam. -*See Note	Close: - Lake Austin -Lady Bird Lake -Colorado River below Longhorn.	Same as 3 Gates	Same as 3 Gates: Permit Property Recovery only if property may threaten structures (Bridges, Dams).	Close: -L.A. Downstream of Oyster Landing boat docks to Tom Miller Dam.
Typical "Special Permit" Use (Per City Code 8-5-22 C)	N/A	Property Recovery only.	Property recovery only	Property recovery only	Property recovery only	Hi-risk property recovery only.	Property Recovery Only.

\*Note: After event and debris in the waterway stabilizes, consideration may be given to authorizing motorized commercial watercraft with a length of forty (40) feet or greater, on Lake Austin between Walsh Boat Landing and the Loop 360 Bridge.

### 3. BARTON CREEK

Barton creek can rise very quickly after a storm. Areas above Barton Springs Pool are known for challenging whitewater. During low flow conditions, the creek is typically not navigable. During high flow conditions the creek can quickly move from challenging to extremely dangerous.

Flow rates on Barton Creek at Loop 360 can be viewed at:

[http://waterdata.usgs.gov/tx/nwis/uv?format=html&period=2&site\\_no=08155300](http://waterdata.usgs.gov/tx/nwis/uv?format=html&period=2&site_no=08155300)

<b>BARTON CREEK</b>				
USGS Sensor on Barton Creek at Loop 360	0-350 CFS	350 -750 CFS	750- 1500 CFS	> 1500 CFS
Action by Fire Chief	Open	Open	Open	Waterway is CLOSED
Condition:	Recreational Flow	Challenging Flow	Dangerous Flow	Closed
Typical use of Waterway: (May be helpful in public information and outreach).	-Kayaks: YES -Canoes and other watercraft: YES -Swimming Tubing: YES	-Kayaks: YES -Canoes and other watercraft: YES -Swimming Tubing: NO	-Hard-shell Kayaks with helmet and Type III PFD: YES -No other use.	Closed

#### SPECIAL NOTES

The below factors, in addition to the stream flow rates, must be considered when determining the closure or reopening plan for Barton Creek:

- The amount of debris in and along the waterway.
- Upstream rainfall.
- Additional predicted rainfall on the creek.

## 4. OTHER CREEKS

The status of Streams and Creeks, other than Barton Creek, should be reviewed after any major storm and closed if needed. Generally, levels on these waterways will drop fairly quickly and can be reopened within 24 to 48 hours after the flooding event.

## 5. TIMING OF RESTRICTIONS

Generally, restrictions will be placed in-effect as soon as possible after an event.

By City Code, restrictions must include an expiration date no later than the 5<sup>th</sup> day after being posted. However, the Fire Chief may issue another ban if conditions persist (City Code 8-5-22 A2).

The Office of Homeland Security and Emergency Management and the Situation Assessment Team should coordinate closely with LCRA to determine when gates are likely to be closed.

Stream, Creek, and Barton Creek restrictions will typically last 1-2 days and may be issued on an Order separate from those for Lake Austin and Lady Bird Lake. This will allow these stream restrictions to be modified or cancelled as soon as conditions warrant.

It takes approximately 2 hours for water levels to drop after a gate is closed at Mansfield Dam. Restrictions should be timed appropriately.

Many times LCRA will close more than one gate within a few hours. Depending on the closure schedule, it may be best to time modification of Orders to expire at the end of a closing sequence. Frequent changes in Orders are confusing to the public and difficult to post / enforce.

Typically, ongoing restrictions will be designed to expire at Noon. This gives the team time make an early-morning assessment, hold a coordination meeting at 10 AM and post new restrictions prior to Noon.

## 6. NOTIFICATION

The following steps are needed when an order is issued:

- It must be posted at City Hall.
- City PIO must do a news release and send it to all local TV and Radio stations.
- The HSEM Emergency Conditions Web Page must be updated.
- Social Media must be updated
- HSEM should send an AWACS News Page
- City 3-1-1 and 9-1-1 staff as well as APD, AFD, A/TCEMS and TCSO dispatch must be notified.

## 7. FACILITIES ALONG AREA WATERWAYS

### **LAKE TRAVIS:**

- **Quick Facts:**
  - Elevation when full: 681 feet above mean sea level (msl)
  - Normal operating range: at or below 681 feet above msl
  - Spillway elevation: 714 feet above msl
  - Top of dam: 750 feet above msl
  - Volume when full: 1,131,650 acre-feet
  - Historic high: 710.4 feet above msl on Dec. 25, 1991
  - Historic low: 614.2 feet above msl on Aug. 14, 1951
  - 100-year flood level at dam: 716 feet above msl
  - 500-year flood level at dam: 728.5 feet above msl
- **LCRA Lake Level and Flow Data:**  
<http://hydromet.lcra.org/full.aspx>
- **Political Jurisdiction:**
  - Travis County
- **Normal Emergency Response**
  - Law Enforcement: LCRA Rangers / Travis County Sheriff
  - Fire: Various
  - EMS: Austin- Travis County EMS

### **MANSFIELD DAM:**

- **Mapsco:** 491E
- **Quick Facts:**
  - Floodgates: 24
  - Total discharge capacity: 130,000 cubic feet per second (cfs)
  - 24 floodgates @ 5,000 cfs each
  - 3 turbines @ 2,500 cfs each
- **LCRA Lake Level and Flow Data:**  
<http://hydromet.lcra.org/full.aspx>
- **Owned by LCRA**
- **Political Jurisdiction:**
  - Travis County above South Face of Dam
  - City of Austin below South Face of Dam
- **Normal Emergency Response**
  - Law Enforcement: LCRA Rangers / Travis County Sheriff (Above).  
Austin Police- Parks Division (Below).
  - Fire: Lake Travis Fire & Rescue (Dam and Above) Austin Fire (Below)
  - EMS: Austin-Travis County EMS

### **LAKE AUSTIN:**

- **Quick Facts:**



- Elevation when full: 492.8 feet above mean sea level (msl)
- Normal operating range: 491.8 to 492.8 feet above msl
- Spillway elevation: 492.8 feet above msl
- Top of dam: 519 feet above msl
- Volume when full: 21,725 acre-feet
- Historic high: 495.2 feet above msl on May 25, 1981
- Historic low: 474.3 feet above msl on Feb. 17, 1963
- 100-year flood level at dam: 493 feet above msl
- 500-year flood level at dam: 503.25 feet above msl
- Dimensions: 20.25 miles long, 1,300 feet at widest point
- **LCRA Lake Level and Flow Data:**  
<http://hydromet.lcra.org/full.aspx>
- **Political Jurisdiction:**
  - City of Austin to a point 10 feet above waterline.
- **Normal Emergency Response**
  - Law Enforcement: Austin Police- Parks Division
  - Fire: Austin Fire
  - EMS: Austin-Travis County EMS

### **TOM MILLER DAM:**

- **Mapsco:** 584A
- **Quick Facts**
  - Floodgates: 9
    - 4 large floodgates @ 15,500 cfs each
    - 5 small floodgates @ 8,800 cfs each
  - Total discharge capacity: 110,000 cubic feet per second (cfs)
  - 2 turbines @ 2,000 cfs each
  - Generating capacity: 17.3 megawatts
- **LCRA Lake Level and Flow Data:**  
<http://hydromet.lcra.org/full.aspx>
- **Owner:** City of Austin- Leased to LCRA until 2020
- **Political Jurisdiction:**
  - City of Austin
- **Normal Emergency Response**
  - Law Enforcement: Austin Police- Parks Division / LCRA Rangers
  - Fire: Austin Fire
  - EMS: Austin-Travis County EMS

### **LADY BIRD LAKE:**

- **Quick Facts:**
  - Elevation 428.25 feet above mean sea level (msl)
  - Normal operating 428.25 feet above msl- constant level
  - Spillway elevation (overflow) 429.7 feet above msl
  - Emergency Spillway Elevation 434 feet above msl
  - Top of dam: 464 feet above msl
  - Dimensions: 5.4 miles long, 3144 feet at widest point
- **Political Jurisdiction:**
  - City of Austin
- **Normal Emergency Response**
  - Law Enforcement: Austin Police- Parks Division
  - Fire: Austin Fire
  - EMS: Austin- Travis County EMS

### **LONGHORN DAM:**

- **Quick Facts:** 615H
  - Floodgates:
    - 2 automatic at @ 3980 cfs each
    - 7 manual gates at 8400 cfs each
  - Total discharge capacity: 62,778 cubic feet per second (cfs)
- **Owner:** City of Austin- Austin Energy
- **LCRA Lake Level and Flow Data:**  
<http://hydromet.lcra.org/full.aspx>
- **Political Jurisdiction:**
  - City of Austin
- **Normal Emergency Response**
  - Law Enforcement: Austin Police- Parks Division
  - Fire: Austin Fire
  - EMS: Austin-Travis County EMS

## 8. MANSFIELD DAM AND DOWNSTREAM FLOODGATE OPERATIONS

### OVERVIEW

LCRA will typically begin to open flood gates on Mansfield dam when the level of Lake Travis is expected to go above the elevation shown below:

January	685 ft. above msl.
February	685 ft. above msl.
March	685 ft. above msl.
April	685 ft. above msl.
May	691 ft. above msl.
June	691 ft. above msl.
July	685 ft. above msl.
August	685 ft. above msl.
September	691 ft. above msl.
October	691 ft. above msl.
November	691 ft. above msl.
December	691 ft. above msl.

When possible, gate operations are adjusted to lower the level of Lake Travis, while minimizing downstream flooding.

Floodgates on Tom Miller Dam and Longhorn dam are adjusted to parallel Mansfield Dam Operations. Additional inflow of water from creeks may cause the need for additional gate openings at these facilities.

Under certain conditions, there may be gate operations at Tom Miller Dam (alone) that cause hazardous conditions on Lake Austin upstream from the dam.

During these gate operations, it may be unsafe to use Lake Austin and Lady Bird Lake for a variety of reasons:

- Debris in the waterway.
- Potential additional damage to property along the lakes.
- Potential hazards around open dam gates.
- Swift currents that may overwhelm non-motorized boats and those with small motors.
- The potential of additional hazards caused by floating hydrilla mats and other vegetation.

## 9. SAMPLE WATERWAY RESTRICTION ORDERS

### CREEKS ONLY

### **(Creeks Only) ORDER**

#### FLOODWATER and WATERCRAFT BAN

#### BE IT KNOWN:

Flooding has occurred from storms that began during the week of November 15, 2004.

These conditions have created high and swift waters, which combined with debris, has made the recreational, commercial, and navigational use of all creeks and streams within the City of Austin unsafe.

Under the Authority of Section 8-5-21 of the Austin City Code, I hereby determine that flood conditions exist in all streams and creeks within the City of Austin.

Said waterways are collectively the "Flood Ban Area."

I hereby ORDER a ban on all commercial or navigational boating in and all recreational use of the Flood Ban Area.

Persons are advised that it is an offense to violate this ORDER or to attempt a low water crossing of any road that has been barricaded.

Watercraft illegally being operated on waters in the Flood Ban Area may be impounded.

Persons should contact the City of Austin Police Headquarters at 715 E. 8th St., Austin, during business hours, to request written authorization to secure property in the Flood Ban Area. Proof of ownership or occupancy is required.

Posted at City Hall on this 23rd day of November, 2004.

This ORDER is effective at 12 Noon, Tuesday, November 22, 2004 and expires at 12 Noon, Wednesday, November 23, 2004.

BY: \_\_\_\_\_

Fire Chief  
City of Austin

## **ORDER**

### FLOODWATER and WATERCRAFT BAN

**BE IT KNOWN:**

Flooding has occurred from storms that began during the week of \_\_\_\_\_. Additional floodwaters are entering City of Austin waterways from waters discharged at Mansfield Dam by the Lower Colorado River Authority.

These conditions have created high and swift waters, which combined with debris, has made the recreational, commercial and navigational use of Lake Austin, Lady Bird Lake, the portion of the Colorado River below Longhorn Dam, and Creeks within the City of Austin unsafe.

Under the Authority of Section 8-5-21 of the Austin City Code, I hereby determine that flood conditions exist in the following described rivers, or lakes:

- Lake Austin
  - Lady Bird Lake
  - Colorado River below Longhorn Dam
  - All creeks within the City of Austin
  - 
  - Said waterways are collectively the "Flood Ban Area."
- I hereby ORDER a ban on all commercial or navigational boating in and all

recreational use of the Flood Ban Area.

Persons are advised that it is an offense to violate this ORDER or to attempt a low water crossing of any road that has been barricaded.

Watercraft illegally being operated on waters in the Flood Ban Area may be impounded.

Persons should contact the City of Austin Police Headquarters at 715 E. 8th St., Austin, during business hours, to request written authorization to secure property in the Flood Ban Area. Proof of ownership or occupancy is required.

Posted at City Hall on this the \_\_\_\_ day of \_\_\_\_\_, 20\_\_.

This ORDER is effective at \_\_\_\_\_(time and date). and expires at (time and date).

BY: \_\_\_\_\_

Fire Chief  
City of Austin

## **ORDER**

### FLOODWATER and WATERCRAFT BAN

#### BE IT KNOWN:

Flooding has occurred from storms that began during the week of November 15, 2004. Additional floodwaters are entering City of Austin waterways from waters discharged at Mansfield Dam by the Lower Colorado River Authority.

These conditions have created high and swift waters, which combined with debris, has made the recreational, commercial, and navigational use of Lake Austin, Lady Bird Lake, the portion of the Colorado River below Longhorn Dam unsafe.

Under the Authority of Section 8-5-21 of the Austin City Code, I hereby determine that flood conditions exist in the following described rivers, or lakes:

- Lake Austin
- Lady Bird Lake
- Colorado River below Longhorn Dam
- 
- Said waterways are collectively the "Flood Ban Area."

I hereby ORDER a ban on all commercial or navigational boating in and all recreational use of the Flood Ban Area.

Persons are advised that it is an offense to violate this ORDER or to attempt a low water crossing of any road that has been barricaded.

Watercraft illegally being operated on waters in the Flood Ban Area may be impounded.

Persons should contact the City of Austin Police Headquarters at 715 E. 8th St., Austin, during business hours, to request written authorization to secure property in the Flood Ban Area. Proof of ownership or occupancy is required.

Posted at City Hall on this 24th day of November, 2004.

This ORDER is effective at 12 Noon, Wednesday, November 24, 2004 and expires at 12 Noon, Monday, November 29, 2004.

BY: \_\_\_\_\_

Fire Chief  
City of Austin

## ORDER

### FLOODWATER and WATERCRAFT BAN

#### BE IT KNOWN:

Flooding has occurred from storms that began during the week of November 15, 2004. Additional floodwaters are entering City of Austin waterways from waters discharged at Mansfield Dam by the Lower Colorado River Authority.

These conditions have created high and swift waters, which combined with debris, has made the recreational, commercial, and navigational use of Lake Austin, Lady Bird Lake, the portion of the Colorado River below Longhorn Dam unsafe.

Under the Authority of Section 8-5-21 of the Austin City Code, I hereby determine that flood conditions exist in the following described rivers, or lakes:

- Lake Austin
- Lady Bird Lake
- Colorado River below Longhorn Dam
- 
- Said waterways are collectively the "Flood Ban Area."

I hereby ORDER a ban on all commercial or navigational boating in and all recreational use of the Flood Ban Area.

Persons are advised that it is an offense to violate this ORDER or to attempt a low water crossing of any road that has been barricaded.

Watercraft illegally being operated on waters in the Flood Ban Area may be impounded.

Persons should contact the City of Austin Police Headquarters at 715 E. 8th St., Austin, during business hours, to request written authorization to secure property in the Flood Ban Area. Proof of ownership or occupancy is required.

Posted at City Hall on this 29th day of November, 2004.

This ORDER is effective at 12 Noon, Monday, November 29, 2004 and expires at 12 NOON, Thursday, December 2, 2004.

BY: \_\_\_\_\_

Fire Chief  
City of Austin

## **ORDER**

### FLOODWATER and WATERCRAFT BAN

#### BE IT KNOWN:

Flooding has occurred from storms that began during the week of November 15, 2004. Additional floodwaters are entering City of Austin waterways from waters discharged at Mansfield Dam by the Lower Colorado River Authority.

These conditions have created high and swift waters, which combined with debris, has made the recreational, commercial, and navigational use of Lady Bird Lake, portions of Lake Austin, and the portion of the Colorado River below Longhorn Dam unsafe.

Under the Authority of Section 8-5-21 of the Austin City Code, I hereby determine that flood conditions exist in the following described rivers, or lakes:

- Lake Austin- Except for the area upstream of Walsh Landing to Commons Ford
- Lady Bird Lake
- Colorado River below Longhorn Dam
- 
- Said waterways are collectively the "Flood Ban Area."

I hereby ORDER a ban on all commercial or navigational boating in and all recreational use of the Flood Ban Area.

Persons are advised that it is an offense to violate this ORDER or to attempt a low water crossing of any road that has been barricaded.

Watercraft illegally being operated on waters in the Flood Ban Area may be impounded.

Persons should contact the City of Austin Police Headquarters at 715 E. 8th St., Austin, during business hours, to request written authorization to secure property in the Flood Ban Area. Proof of ownership or occupancy is required.

Posted at City Hall on this 1st day of December, 2004.

This ORDER is effective at 5 PM, Wednesday, December 1, 2004 and expires at 5 PM, Friday, December 3, 2004.

The Floodwater and Watercraft Ban issued by me on Monday, November 29, 2004 is rescinded effective at 5PM, Wednesday, December 01, 2004.

BY: \_\_\_\_\_

Fire Chief  
City of Austin



## **ORDER**

### FLOODWATER and WATERCRAFT BAN

BE IT KNOWN:

Flooding has occurred from storms that began September 7, 2010.

These conditions have created high and swift waters, which combined with debris, has made the recreational, commercial and navigational use of Lake Austin, Town Lake, the portion of the Colorado River below Longhorn Dam, Barton Creek, and all other Creeks within the City of Austin unsafe.

Under the Authority of Section 8-5-21 of the Austin City Code, I hereby determine that flood conditions exist in the following described rivers, or lakes:

- Lake Austin
- Lady Bird Lake
- Colorado River below Longhorn Dam

Said waterways are collectively the "Flood Ban Area."

I hereby ORDER a ban on all navigational boating in and all recreational use of the Flood Ban Area.

I hereby ORDER a ban on all commercial boating, with the exception of motorized commercial watercraft with a length of forty (40) feet or greater, on Lake Austin between Walsh Boat Landing and the Loop 360 bridge.

Persons are advised that it is an offense to violate this ORDER or to attempt a low water crossing of any road that has been barricaded.

Watercraft illegally being operated on waters in the Flood Ban Area may be impounded. Persons should contact the City of Austin Police Headquarters at 715 E. 8<sup>th</sup> St., Austin, during business hours, to request written authorization to secure property in the Flood Ban Area. Proof of ownership or occupancy is required.

Posted at City Hall on this the 10<sup>th</sup> day of September, 2010.

This ORDER is effective at 12 Noon Friday, September 10, 2010 and expires at 12 Noon, Monday, September 13, 2010.

BY: \_\_\_\_\_

Fire Chief  
City of Austin

## **ORDER**

### WATERCRAFT BAN

BE IT KNOWN:

\_\_\_\_\_ has necessitated floodgate operations at Tom Miller Dam.

These conditions have created and swift waters, which have made the recreational, commercial, and navigational use of a portion of Lake Austin, unsafe.

Under the Authority of Section 8-5-21 of the Austin City Code, I hereby determine that hazardous conditions exist in the following described lake:

Lake Austin- Downstream of Oyster Landing boat docks to Tom Miller Dam.

Said area is known as the "Watercraft Ban Area."

I hereby ORDER a ban on all commercial or navigational boating in and all recreational use of the Watercraft Ban Area.

Watercraft illegally being operated on waters in the Flood Ban Area may be impounded.

Persons should contact the City of Austin Police Headquarters at 715 E. 8th St., Austin, during business hours, to request written authorization to secure property in the Flood Ban Area. Proof of ownership or occupancy is required.

Posted at City Hall on this 1st day of December, 2004.

This ORDER is effective at 5 PM, Wednesday, December 1, 2004 and expires at 5 PM, Friday, December 3, 2004.

The Floodwater and Watercraft Ban issued by me on Monday, November 29, 2004 is rescinded effective at 5PM, Wednesday, December 01, 2004.

BY: \_\_\_\_\_

Fire Chief  
City of Austin

## APPENDIX 1: CITY OF AUSTIN CODE

### § 8-5-21 BAN BY FIRE CHIEF.

(A) The fire chief may ban recreational or commercial boating on or recreational use of all or a part of a lake, river, creek, or other affected area after determining that flooding is occurring or likely to occur. In making a determination, the fire chief shall consider information available from the City's flood early warning system and recognized standards for issuing an advisory flood notice.

(B) If the fire chief orders a ban, the fire chief shall:

- (1) post the ban at city hall;
- (2) publish the ban in a newspaper of city-wide circulation; and
- (3) provide copies of the ban to local radio and television stations.

(C) A ban is effective when posted at city hall.

(D) A ban must include an expiration date that is not later than the fifth day after the posting date.

(E) The fire chief may issue another ban if flood conditions persist.

*Source: 1992 Code Sections 14-2-41 and 14-2-42; Ord. 031009-11; Ord. 031211-11.*

### § 8-5-22 RESTRICTED AREAS.

(A) Except as otherwise provided in this section, a person may not:

(1) enter or be on a lake, river, creek, or other area that is the subject of a ban issued in accordance with this article;

(2) enter or be on Lake Austin between Mansfield Dam and Loop 360 when three or more release gates of Mansfield Dam are open;

(3) enter or be on Lake Austin when four or more release gates of Mansfield Dam are open; or

(4) cross or attempt to cross a low water crossing that has been barricaded by the city.

(B) Subsection (A) does not apply to a city, state, or federal official or employee performing an official duty.

(C) Notwithstanding Subsections (A)(1), (A)(2), and (A)(3), the fire chief may permit a person to enter a restricted area after determining that the person has an ownership or possessory right in property located in the restricted area and that entry into the restricted area is required to remove or secure the property. The fire chief shall issue a permit allowing entry into the restricted area, and the permit holder shall display the permit on request to a city officer or employee responsible for the enforcing this article.

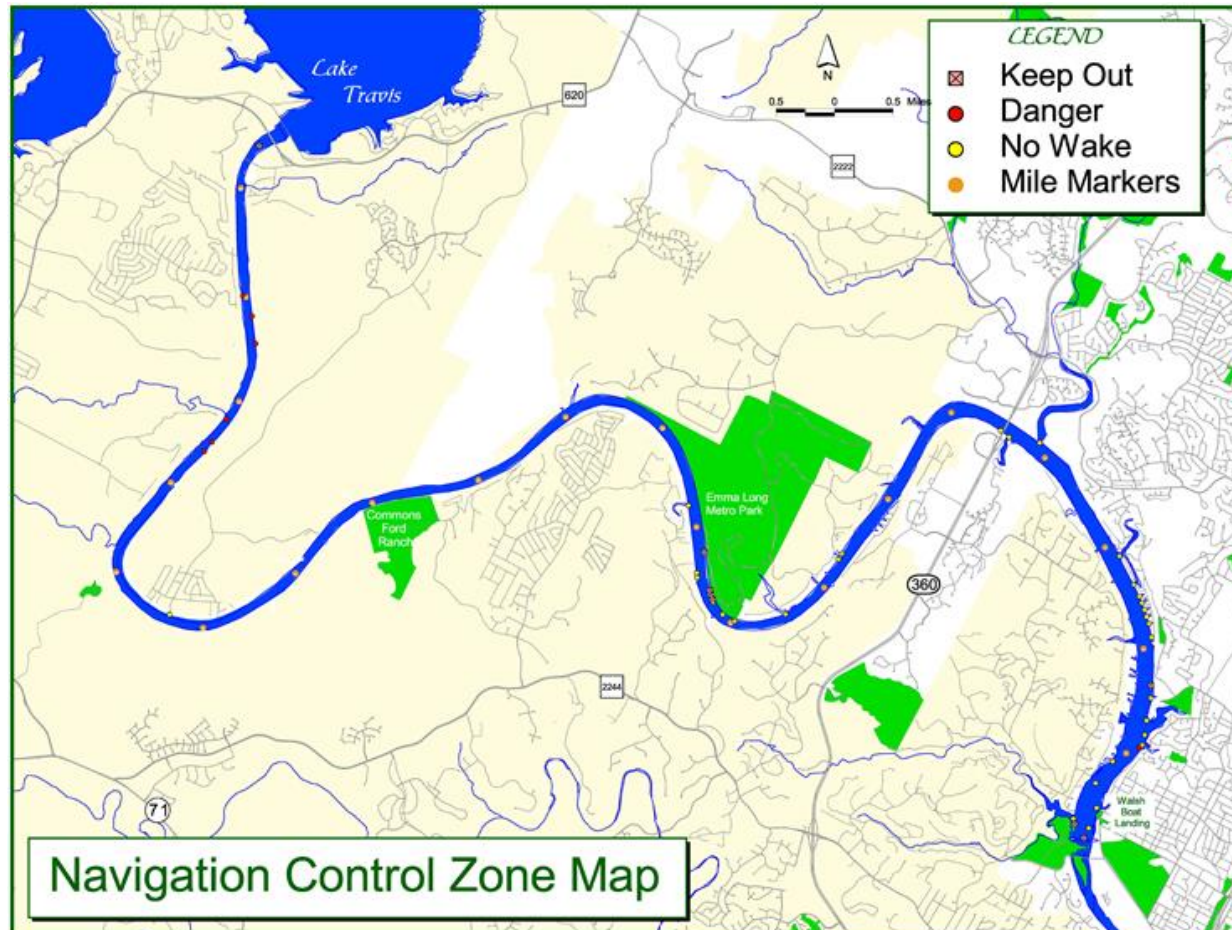
*Source: 1992 Code Sections 14-2-43 and 14-2-44; Ord. 031009-11; Ord. 031211-11.*

#### **§ 8-5-23 TAMPERING WITH BARRIER PROHIBITED.**

A person may not tamper with or remove a barrier placed by the city to prevent entry into an area restricted under Section [8-5-22](#) (*Restricted Areas*). This prohibition does not apply to a city, state, or federal official performing an official duty.

*Source: 1992 Code Section 14-2-45; Ord. 031009-11; Ord. 031211-11.*

## APPENDIX 2: MAPS OF THE COLORADO RIVER AND BARTON CREEK



### Water flow:

- I. Lake Travis
- II. Mansfield Dam
- III. Lake Austin

- IV. Tom Miller Dam
- V. Lady Bird Lake
- VI. Longhorn Dam
- VII. Texas Colorado River



# Barton Creek Greenbelt



## Battalion 6 Special Operations

- 1/4 Mile Marker
- Creek
- Fence
- Power Lines
- Primary Trail
- Secondary trail
- Un-Improved Road
- Preferred Access Point
- R.O.W
- Greenbelt / Parkland
- Point of Interest
- Emergency Access Point

- 1 Campbell's Hole
- 2 The Flats
- 3 Spyglass Access  
2800 Barton Skyway
- 3a Homestead Access  
2010 Homestead
- 4 New Wall
- 5 Gus Frish Wall
- 6 Gus Frish Access  
2842 Barton Hill
- 7 White Face Cliff  
2500 Eastview / 3107 Great Vale
- 8 Spring Springs Trail Head  
3915 S. Lamar
- 9 Spring Springs
- 10 Almer's Cave
- 11 Highline Road Access  
2800 bkt Barton Bluff
- 12 Highline Road Meadow
- 12 Three Falls
- 13 380 Access  
3765-B Capital of Texas Hwy.
- 14 Maggie's Wall



- 15 Gaines Crawl  
Rope Swing
- 16 Gaines Building  
S. Side Access  
4425 MO-PAC
- 17 Gaines Access  
@ MO-PAC  
28000 W. Frontage MO-PAC
- 18 Twin Falls  
3300 bkt S. Capital of Tx.
- 19 Elec Substation Access  
2400 bkt S. Capital of Tx.
- 20 Spring Cave
- 21 Sculpture Falls
- 22 Dena #7
- 23 Camp Craft Access @ creek
- 24 Dena #6
- 25 Camp Craft Access @  
Scottish Woods  
1710 Camp Craft
- 26 Moss Village Access  
4100 bkt Moss Village
- 27 Sendero Access  
4000 bkt

This map is provided for the sole purpose of locating landmarks for the City of Austin. This document, or its contents, are not to be used for any other purpose. The accuracy of the map is not guaranteed. The City of Austin is not responsible for any errors or omissions. Reproduction for any other purpose without permission from the City of Austin is prohibited.