





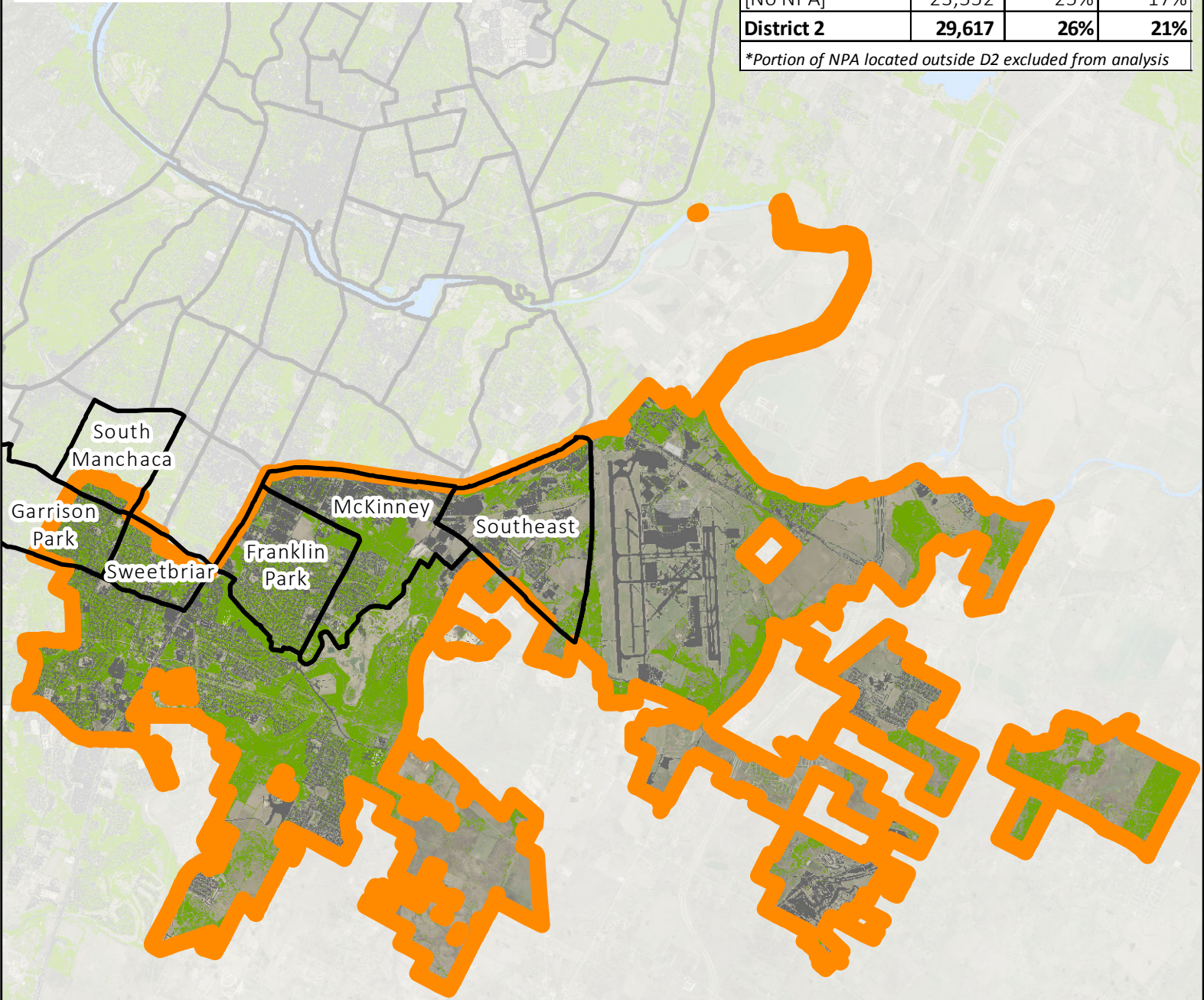
Tree Canopy & Impervious Cover by Neighborhood Planning Area:

District 2

-  District 2 Boundary
-  Neighborhood Planning Areas
-  Tree Canopy (2014)
-  Impervious Cover (IC)

Neighborhood Planning Area	Area (ac)	% Tree Canopy	% IC
Franklin Park	1,402	30%	46%
Garrison Park*	493	38%	45%
McKinney	1,704	29%	40%
South Manchaca*	137	45%	44%
Southeast	1,798	18%	32%
Sweetbriar*	533	29%	47%
[No NPA]	23,552	25%	17%
District 2	29,617	26%	21%

**Portion of NPA located outside D2 excluded from analysis*



This product has been produced by the Watershed Protection Department for the sole purpose of geographic reference. No warranty is made by the City of Austin regarding specific accuracy or completeness.

