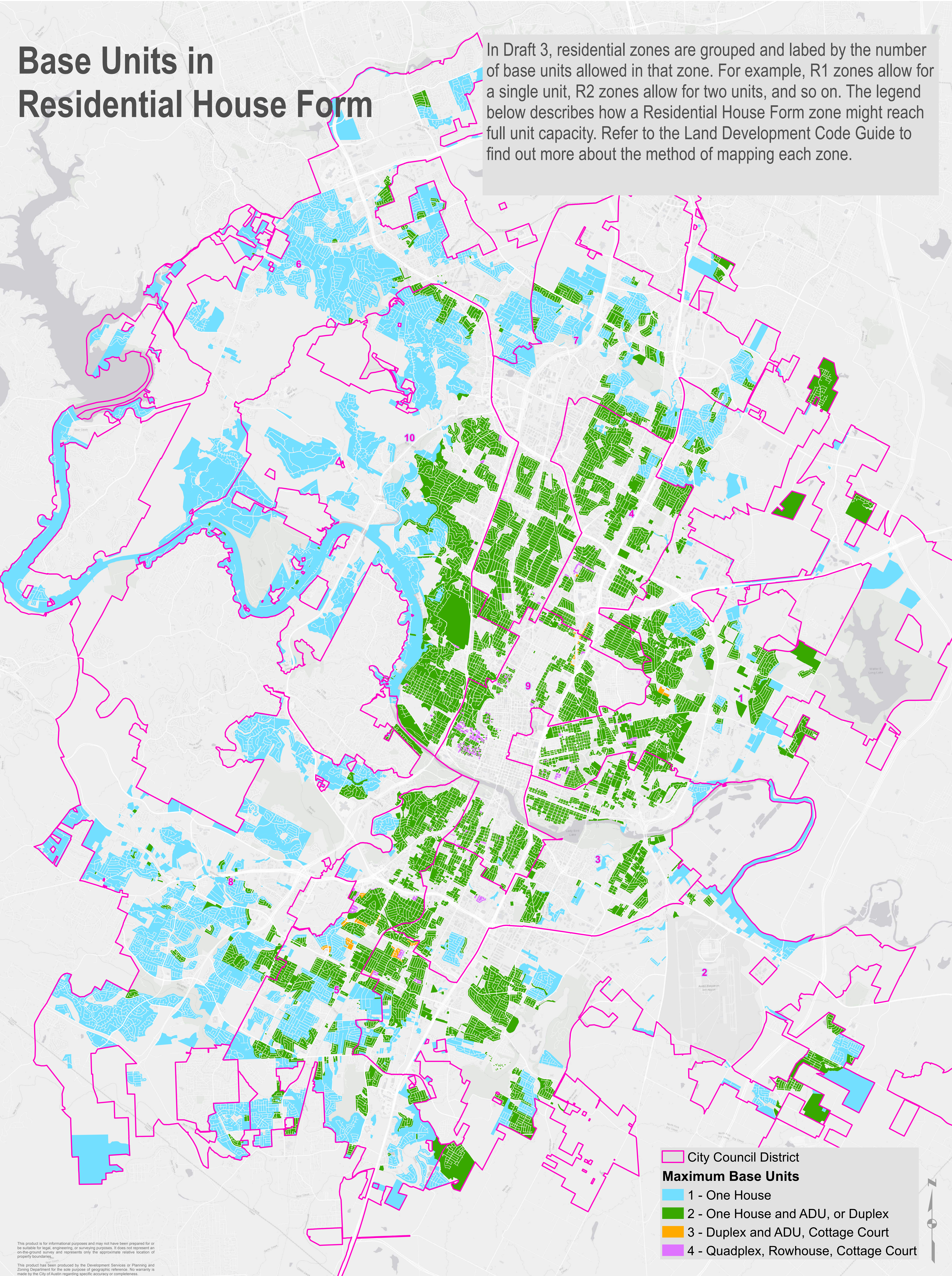


Base Units in Residential House Form

In Draft 3, residential zones are grouped and labeled by the number of base units allowed in that zone. For example, R1 zones allow for a single unit, R2 zones allow for two units, and so on. The legend below describes how a Residential House Form zone might reach full unit capacity. Refer to the Land Development Code Guide to find out more about the method of mapping each zone.



- City Council District
- Maximum Base Units**
- 1 - One House
- 2 - One House and ADU, or Duplex
- 3 - Duplex and ADU, Cottage Court
- 4 - Quadplex, Rowhouse, Cottage Court

This product is for informational purposes and may not have been prepared for or be suitable for legal, engineering, or surveying purposes. It does not represent an on-the-ground survey and represents only the approximate relative location of property boundaries.

This product has been produced by the Development Services or Planning and Zoning Department for the sole purpose of geographic reference. No warranty is made by the City of Austin regarding specific accuracy or completeness.