



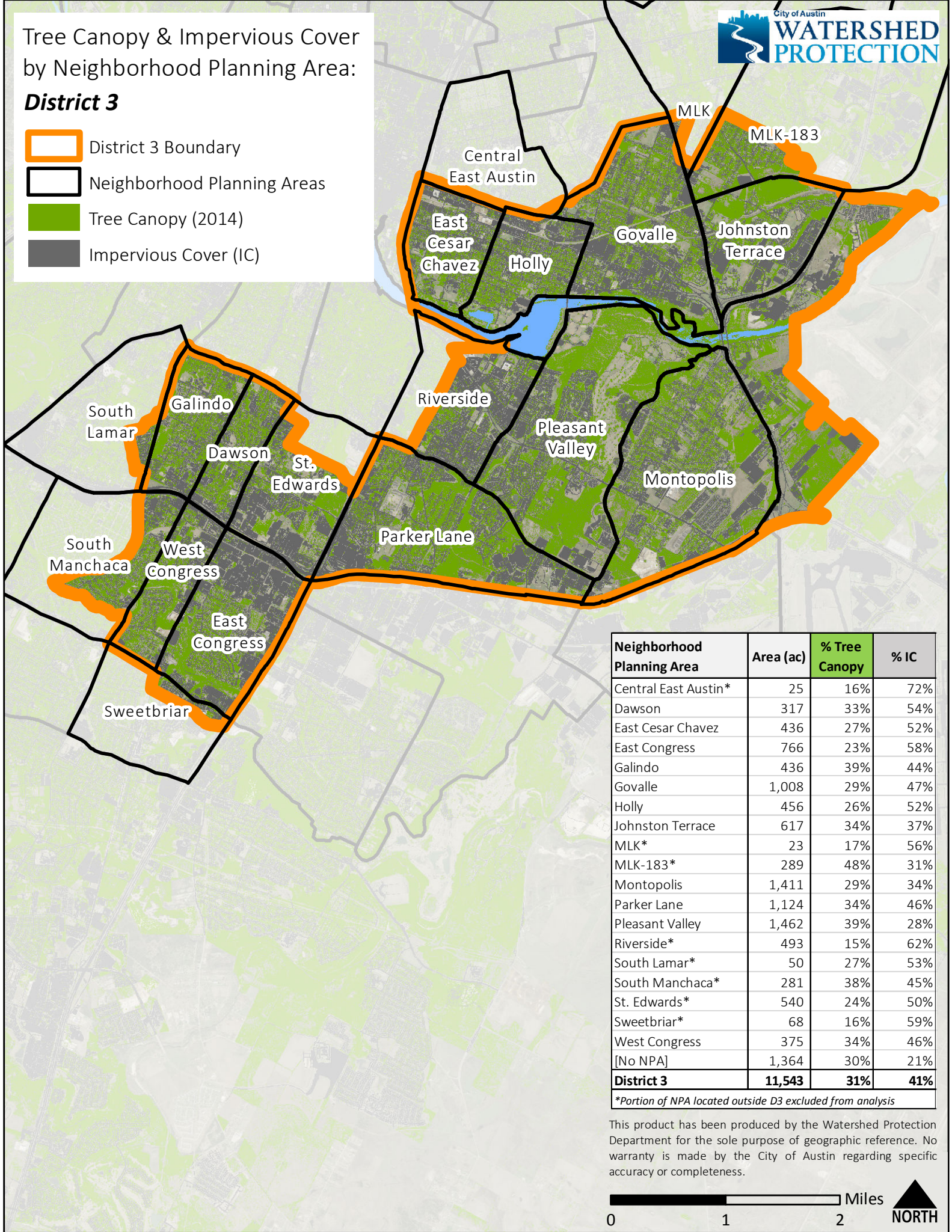


Tree Canopy & Impervious Cover by Neighborhood Planning Area:

District 3

-  District 3 Boundary
-  Neighborhood Planning Areas
-  Tree Canopy (2014)
-  Impervious Cover (IC)



Neighborhood Planning Area	Area (ac)	% Tree Canopy	% IC
Central East Austin*	25	16%	72%
Dawson	317	33%	54%
East Cesar Chavez	436	27%	52%
East Congress	766	23%	58%
Galindo	436	39%	44%
Govalle	1,008	29%	47%
Holly	456	26%	52%
Johnston Terrace	617	34%	37%
MLK*	23	17%	56%
MLK-183*	289	48%	31%
Montopolis	1,411	29%	34%
Parker Lane	1,124	34%	46%
Pleasant Valley	1,462	39%	28%
Riverside*	493	15%	62%
South Lamar*	50	27%	53%
South Manchaca*	281	38%	45%
St. Edwards*	540	24%	50%
Sweetbriar*	68	16%	59%
West Congress	375	34%	46%
[No NPA]	1,364	30%	21%
District 3	11,543	31%	41%

*Portion of NPA located outside D3 excluded from analysis

This product has been produced by the Watershed Protection Department for the sole purpose of geographic reference. No warranty is made by the City of Austin regarding specific accuracy or completeness.