



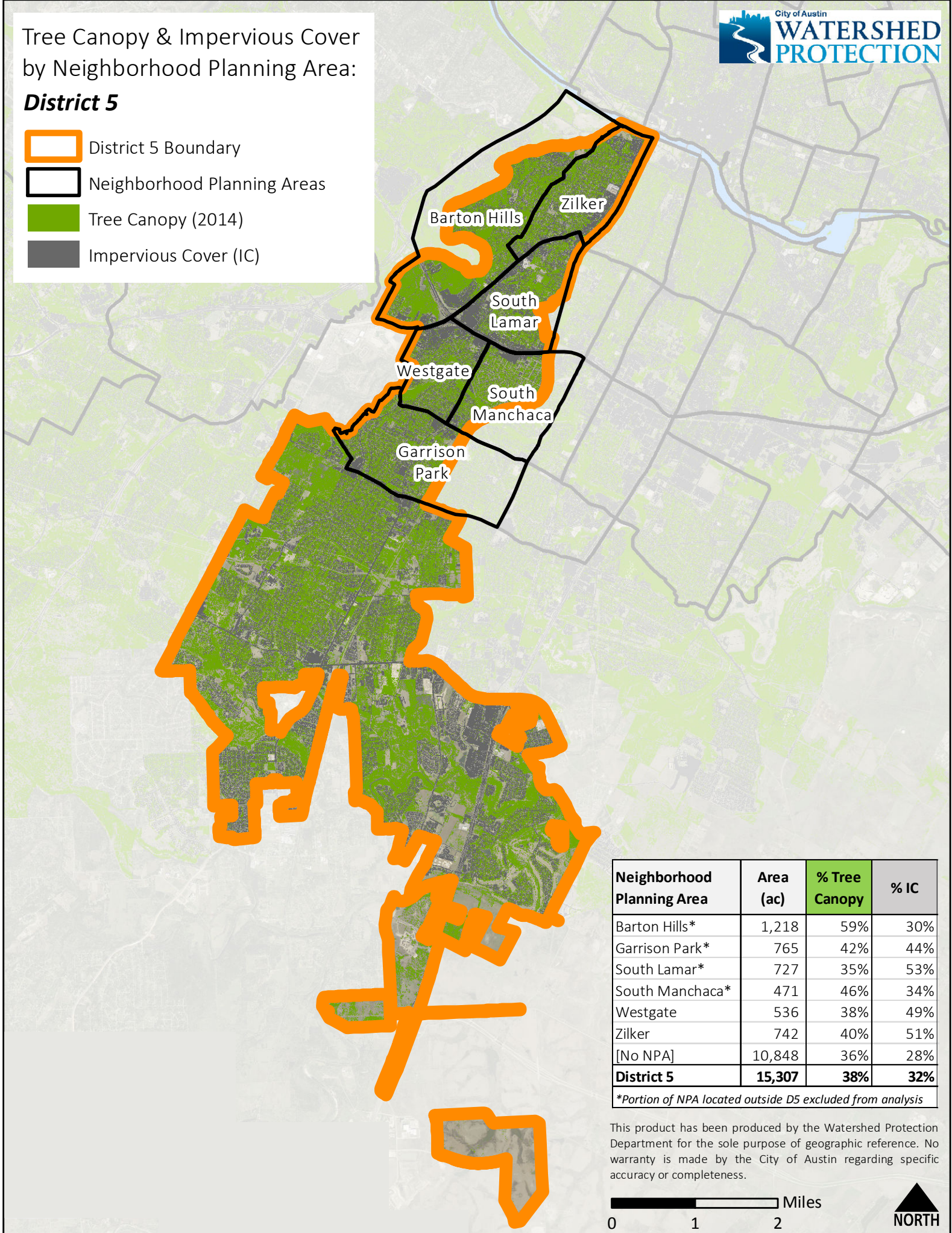


Tree Canopy & Impervious Cover by Neighborhood Planning Area:

District 5

-  District 5 Boundary
-  Neighborhood Planning Areas
-  Tree Canopy (2014)
-  Impervious Cover (IC)



Neighborhood Planning Area	Area (ac)	% Tree Canopy	% IC
Barton Hills*	1,218	59%	30%
Garrison Park*	765	42%	44%
South Lamar*	727	35%	53%
South Manchaca*	471	46%	34%
Westgate	536	38%	49%
Zilker	742	40%	51%
[No NPA]	10,848	36%	28%
District 5	15,307	38%	32%

**Portion of NPA located outside D5 excluded from analysis*

This product has been produced by the Watershed Protection Department for the sole purpose of geographic reference. No warranty is made by the City of Austin regarding specific accuracy or completeness.

