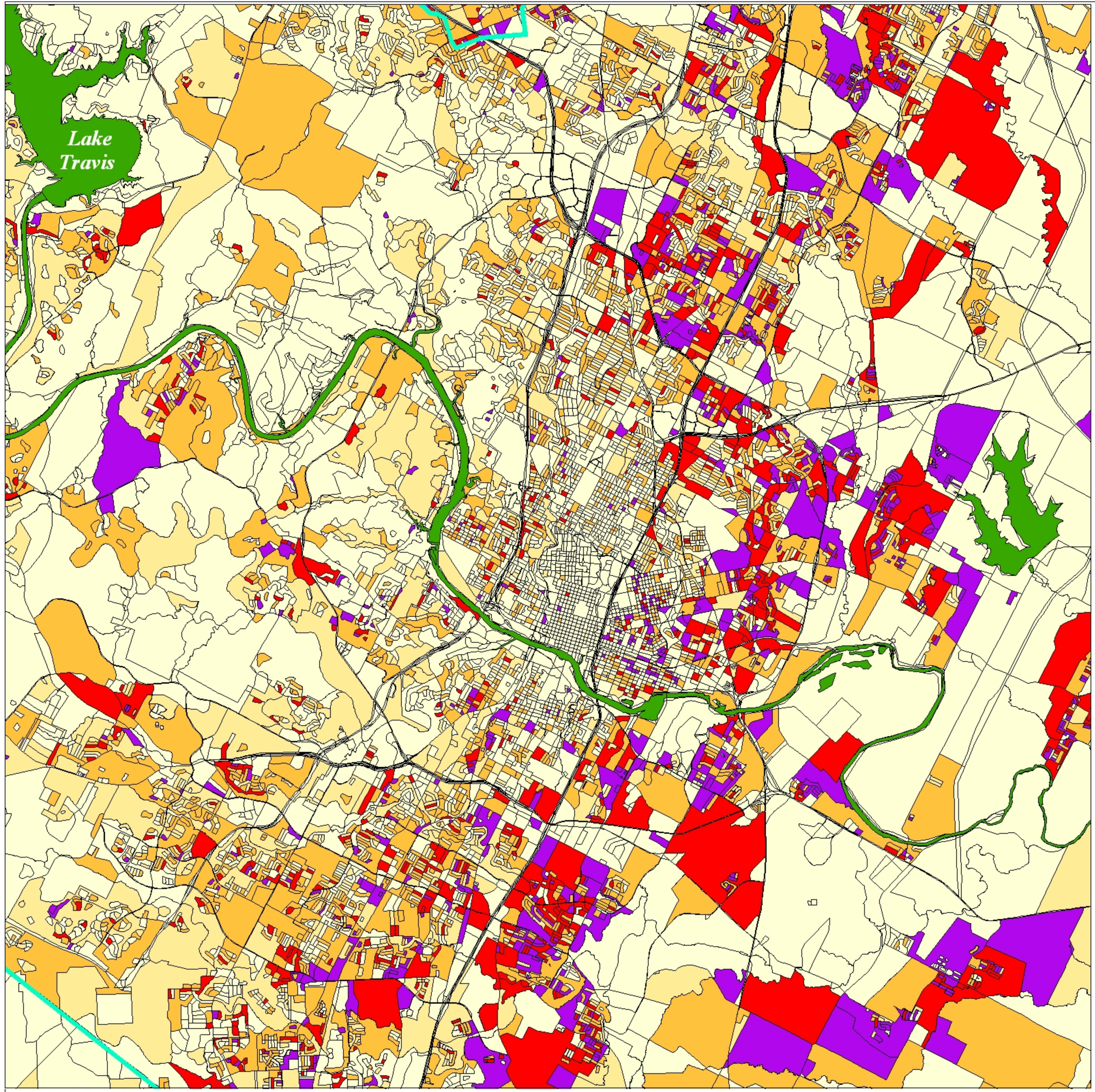


Single Mother Headed Households Concentrations

Austin, Texas
Census 2010 Data

Percentage of all
Households that are
Headed by Single
Mothers

- Less than 2.5%
- 2.5% to 5%
- 5% to 10%
- 10% to 15%
- 15% Plus



Map produced by Ryan Robinson, City Demographer, Department of Planning, City of Austin. July 2011.